



INTEGRATED LEARNING AND SOCIAL HUB
Valahia University Library

This project envisions the creation of a modern university library serving the students of Valahia University in Târgoviște. The primary objective is to provide a relevant, accessible, and contemporary learning environment in response to the evolving educational and social needs of the academic community.

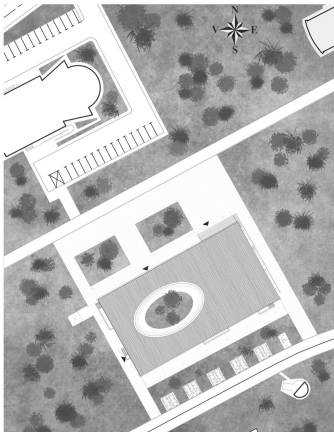
The interior courtyard stands at the core of the architectural concept, conceived as the central element of the entire design. Far from being a simple transitional or decorative space, the courtyard functions as a unifying organism that harmonizes the building's core functions: individual study, academic collaboration, and active relaxation.

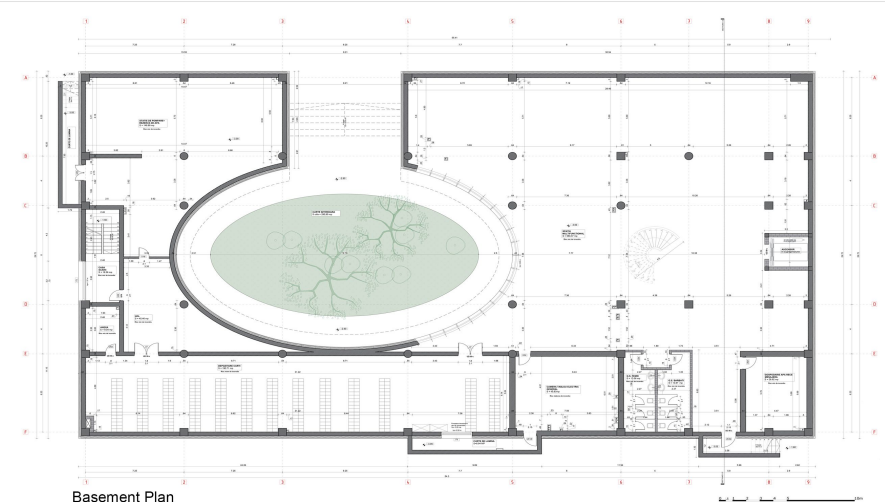
The courtyard plays a vital role in establishing a balanced atmosphere, bringing natural light deep into the interior and generating a sense of openness and connection. It becomes a space of encounter between intellect and nature, between focus and recreation. Informal activities, open-air reading sessions, moments of reflection, or spontaneous academic discussions can take place here—fostering the emergence of a vibrant university community.

The large glazed surface, expressed through a curtain wall façade, opens visually toward this courtyard. Along the inner edge of the glass wall, a bar-style tabletop has been integrated as an alternative study space that allows users to benefit from natural light and calming views of the garden. This strong visual and functional connection between inside and outside reinforces the ideas of transparency, inspiration, and connectivity.

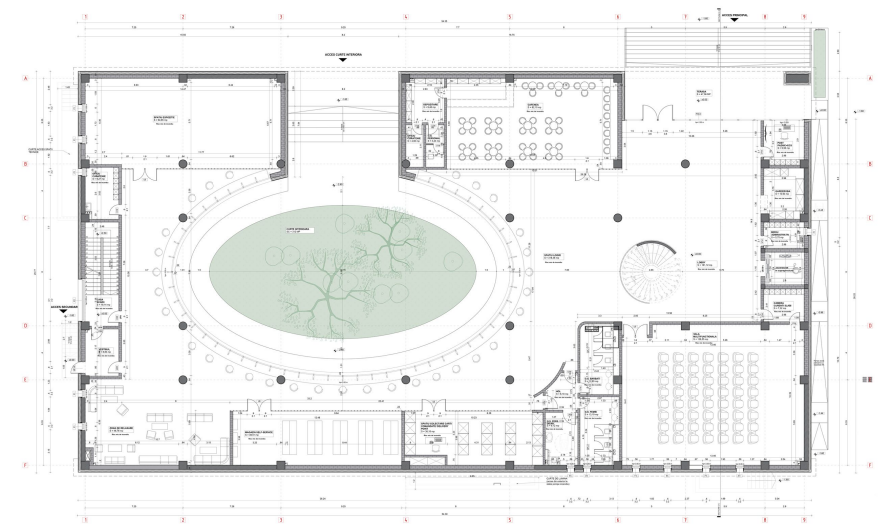
The entire design is guided by the aim to provide a variety of learning environments: open spaces for individual study, enclosed areas for teamwork, and multifunctional zones. Nevertheless, the interior courtyard remains the heart of the concept, a catalyst space that supports human interaction and balances intellectual effort with personal renewal.

Through this approach, the project aspires to create not merely a traditional library, but a comprehensive and integrative educational space, where architecture facilitates knowledge, collaboration, and a strong sense of belonging.

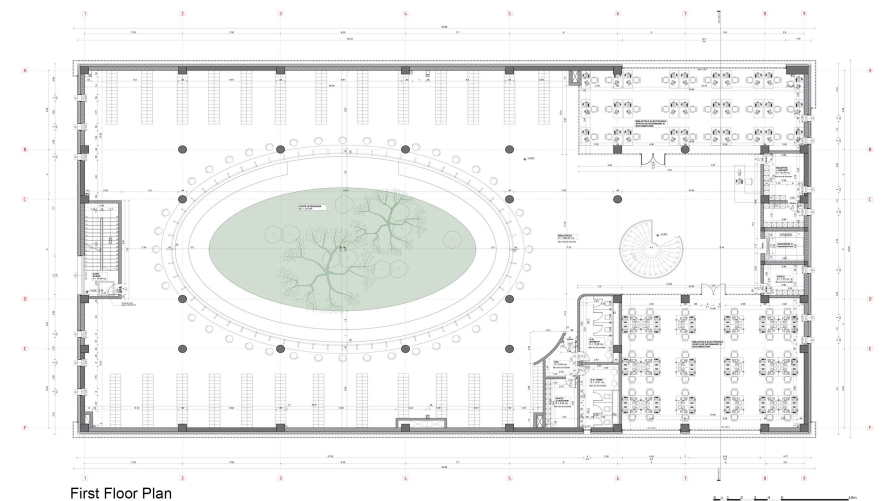




Basement Plan



Ground Floor Plan



First Floor Plan

The main façade of the building is defined by a refined and functionally integrated system of U-glass paneling, which plays a central role in shaping both the architectural identity and the environmental performance of the structure. This translucent glass cladding is carefully arranged across the exterior openings in a rhythmic composition that complements the overall massing of the building while fulfilling multiple performance-driven objectives.

From a functional standpoint, the U-glass panels are designed to filter natural daylight into the interior spaces. Their translucency ensures that light penetrates deep into the library without the accompanying harshness of direct sunlight. This results in a diffused, ambient illumination that significantly improves visual comfort for users, especially in reading and study areas. The filtered light also helps reduce glare on surfaces and screens, which is particularly valuable in a space where prolonged visual tasks are the norm.

At the same time, the U-glass acts as a passive solar control system by mitigating heat gain during warmer periods of the year. By reducing the direct solar load on the building envelope, the system lessens the need for mechanical cooling and artificial lighting, thereby supporting a more energy-efficient operation. This is especially evident on the upper main floor of the library, where the strategic positioning and orientation of the panels optimize daylight access while maintaining thermal comfort throughout the day.

In addition to its environmental benefits, the use of U-glass also contributes to the architectural language of the project. The façade achieves a balance between opacity and transparency, privacy and openness, solidity and lightness. The subtle play of shadows and reflections on the glass surface animates the exterior throughout the day, while from the inside, the ever-changing daylight conditions contribute to a dynamic and pleasant atmosphere that supports the building's function as a space for concentration, learning, and intellectual engagement.

By integrating aesthetic refinement with passive environmental strategies, the U-glass façade becomes a key element in achieving the project's broader goals of sustainability, energy efficiency, and user comfort — all of which are central to the design vision of a contemporary academic library.

