



AYVALIK STONE HOUSE

Ayvalik Stone House is a multifunctional retreat located atop one of Ayvalık's highest elevations, nestled within an expansive olive grove. Commissioned by the Firtına family, the project is envisioned both as a private vacation residence and a community space, offering an immersive experience in local culture, landscape, and sustainability.

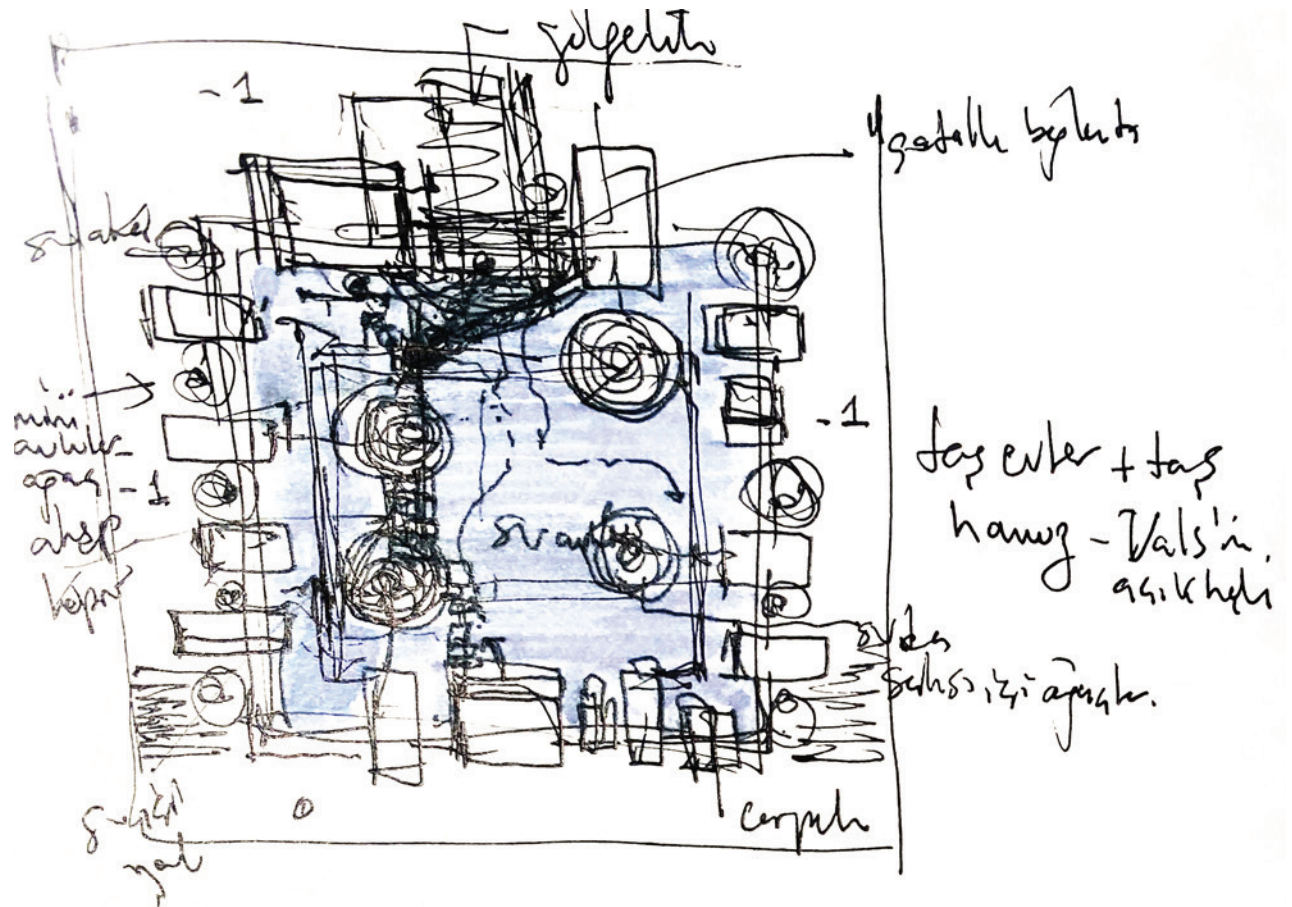
The project is shaped by a deep respect for its natural and cultural context. The masterplan follows the site's natural topography, preserving the existing olive trees by embedding them into the design layout. Building clusters are positioned around these trees, ensuring minimal disruption to the landscape while framing views of the Aegean Sea and the historical town of Ayvalık.





The program supports both private retreat and communal engagement, offering private family vilas, guest residences and community facilities such as workshops in olive oil production, nature trekking, and arts and crafts; connecting visitors to the local culture and landscape.

Two swimming pools at different elevations act as connective spines: 1. The upper pool serves private family residences and service buildings. 2. The lower pool activates the communal zone, linking guest accommodations with shared facilities such as the Olive Oil Workshop, Restaurant, and Fitness Center. These two levels are interconnected by a network of stairs and pedestrian bridges, enhancing circulation and fostering a cohesive spatial narrative.





The architectural language is informed by the vernacular, particularly the use of Sarımsak Stone, a locally sourced material with historical significance. This stone is applied consistently to both exterior facades and interior surfaces, enhancing thermal mass and energy efficiency, while grounding the project in its cultural context.

Key material choices:

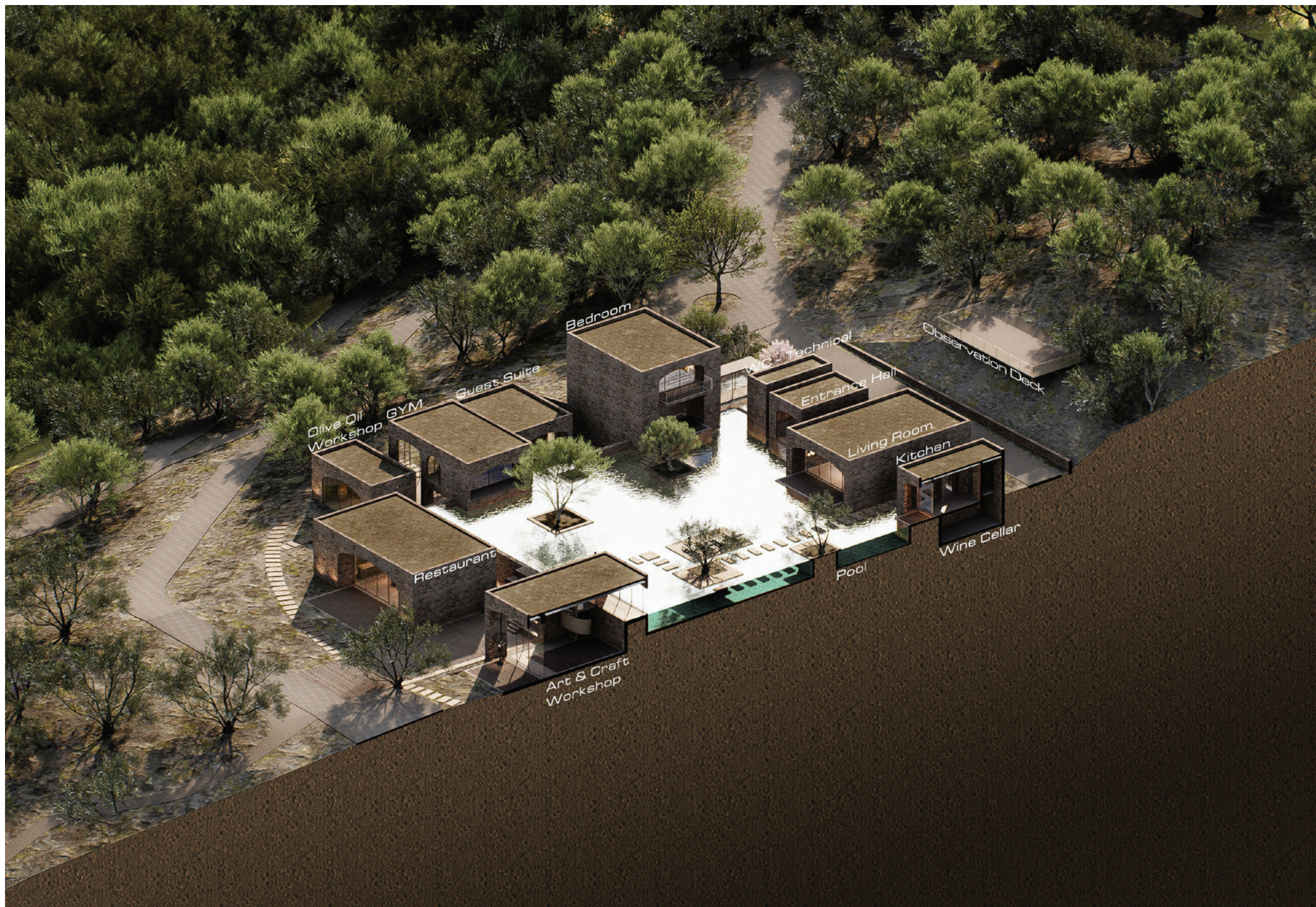
- Sarımsak Stone [facades & interiors]
- Natural Wood [interior finishes and joinery]
- Green Roofs, which contribute to thermal regulation and allow the buildings to merge with the surrounding olive grove

Large glazed openings establish continuous visual and spatial links between interior spaces and the landscape, creating a seamless indoor-outdoor experience. Interiors evoke a tactile, sensory relationship with the natural surroundings through material and spatial simplicity.



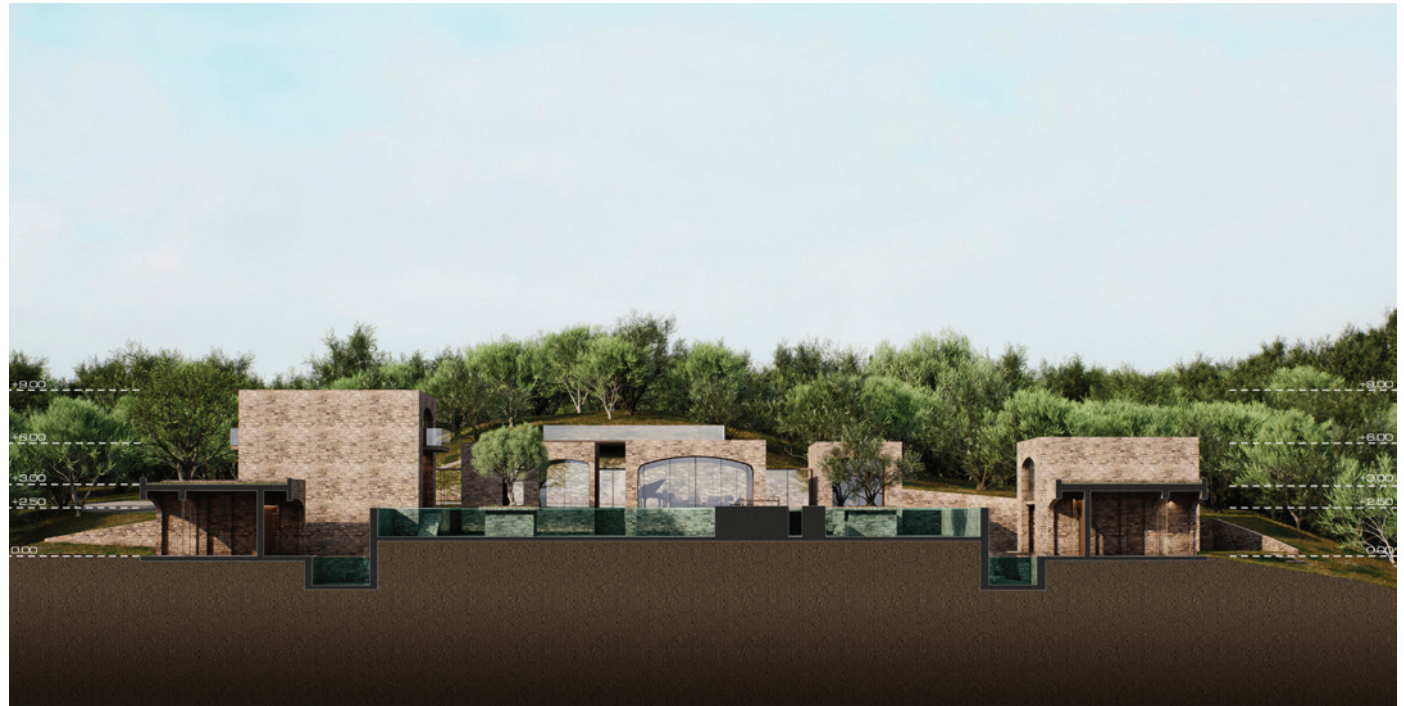






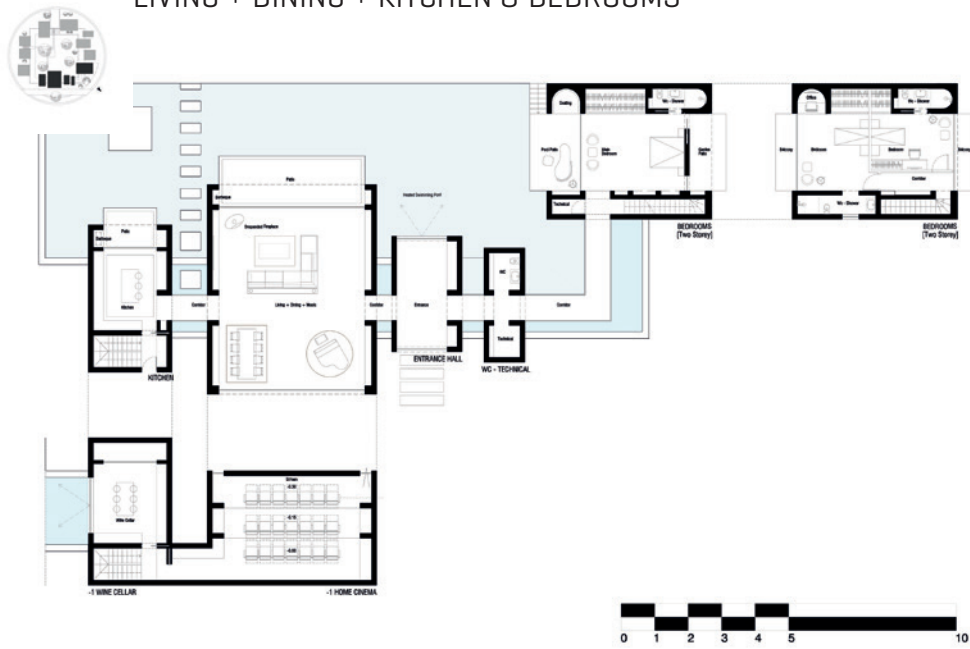
The program supports both private retreat and communal engagement, offering private family auites, guest residences community facilities (i.e., an olive oil production workshop, a restaurant, a fitnessandwellnessfacility,anart&craftworkshop), and nature trails and outdoor experience zones.

Sustainability is integral to the project vision so that the existing olive trees were preseved and incorporated into footprints and open spaces; local and energy efficient materials (e.g., sarimsak stone) were used, energy efficient envelope design with green roofs and water sensitive landscaping were preferred.





LIVING + DINING + KITCHEN & BEDROOMS



RESTAURANT

