



**NILLY BEATY SALON: REFLECTION OF THE AMBIENCE AND PLANTS**

In facing somewhere on the top floor, we enclosed it with greenery and engaged the user's senses by placing mirrors inside, creating a green reflection from both inside and outside to distract attention from spatial limitations. In this women's beauty salon, we selected a distinct color to create an atmosphere that aligns with nature of its function.





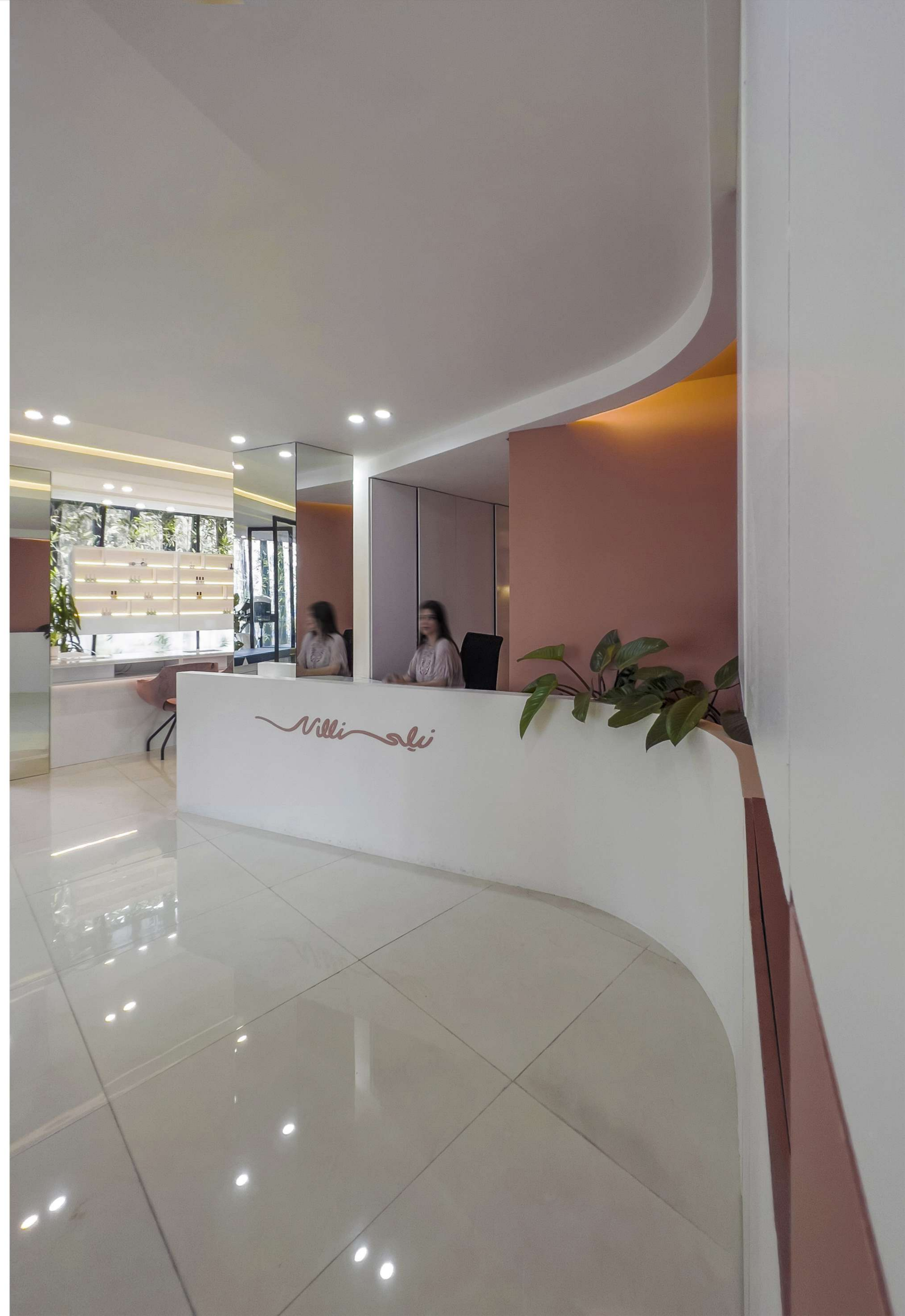
This project was referred to us in its initial state as an old commercial unit on the second floor with a non-geometric floor plan. It had partitioned corners for a kitchenette and a low ceiling, parts of which were finished with drywall by the previous owner.

The client aimed to reuse these elements to reduce costs. Additionally, the client requested the creation of different spaces for various functions, such as: a lobby and seating area with a balcony, two stations for hair styling, a bed for eyebrow treatments, five spaces for nail manicures, two spaces for pedicures, staff and client dressing rooms, and a management office

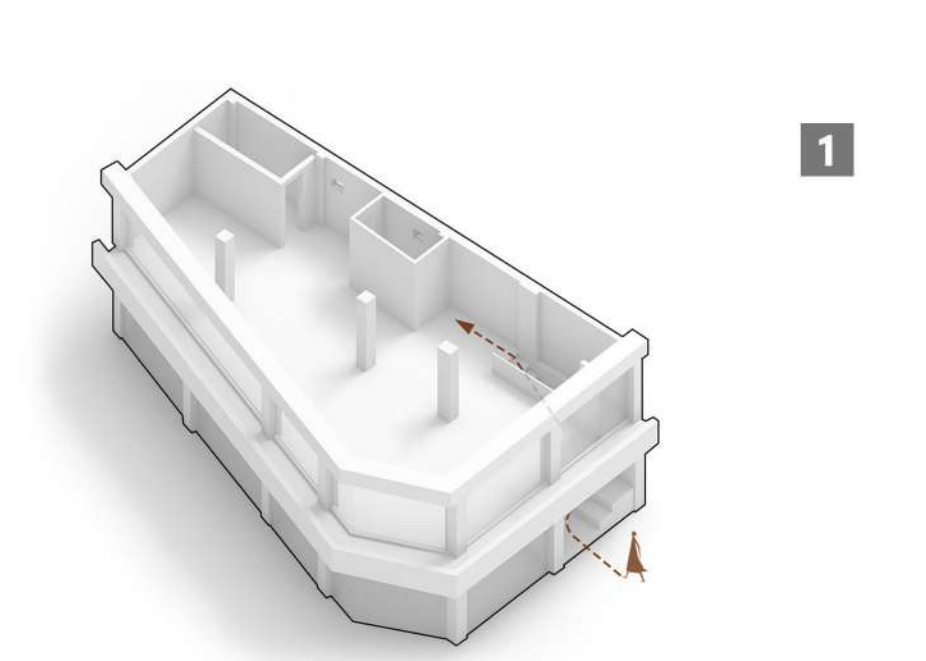
At the beginning of the design process, we focused on resolving the challenges of the irregular and non-geometric floor plan, including three columns in the center. We defined the layout of the spaces longitudinally



- |              |                  |
|--------------|------------------|
| 1. Entrance  | 7. Closet        |
| 2. Lobby     | 8. Threading Bed |
| 3. Balcony   | 9. Manicure      |
| 4. Salon     | 10. Pedicure     |
| 5. WC        | 11. Paantry      |
| 6. Manegment | 12. Head wash    |

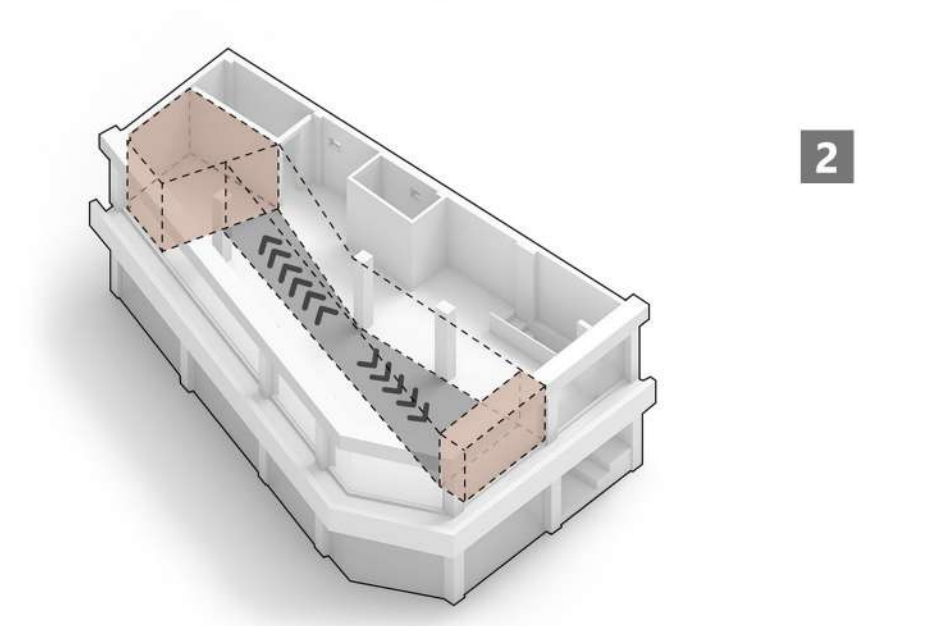






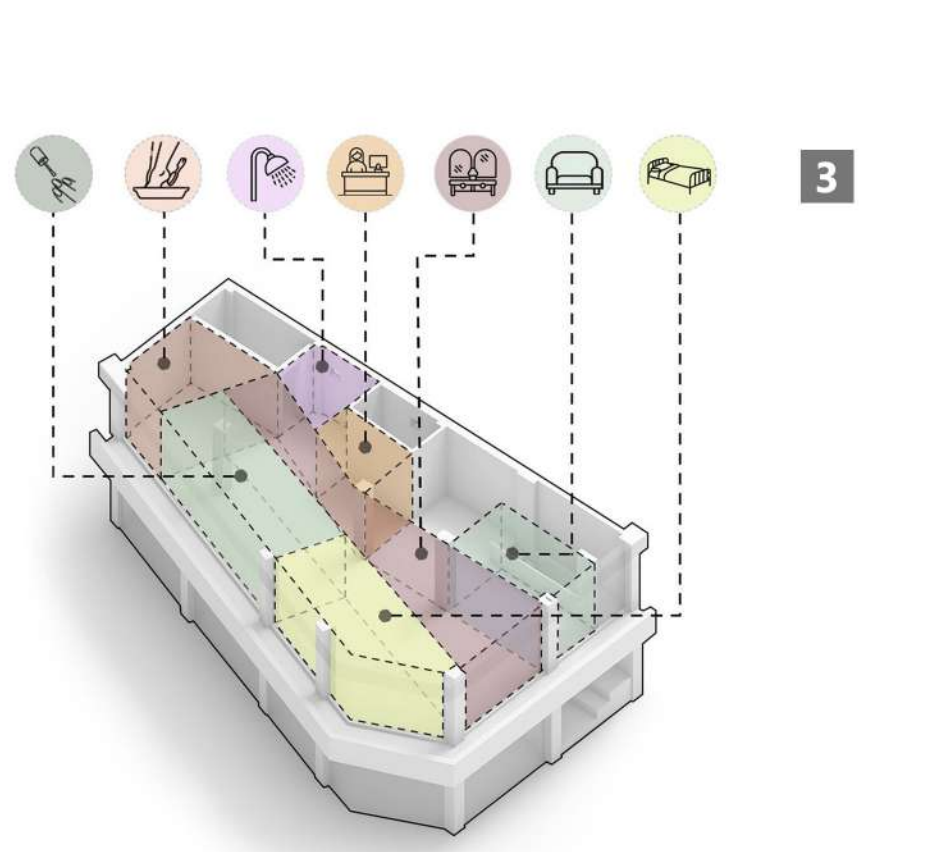
1

The initial condition before the interior design of the unit featured a non-geometric floor plan with a bathroom, a kitchenette, and three columns in the center.



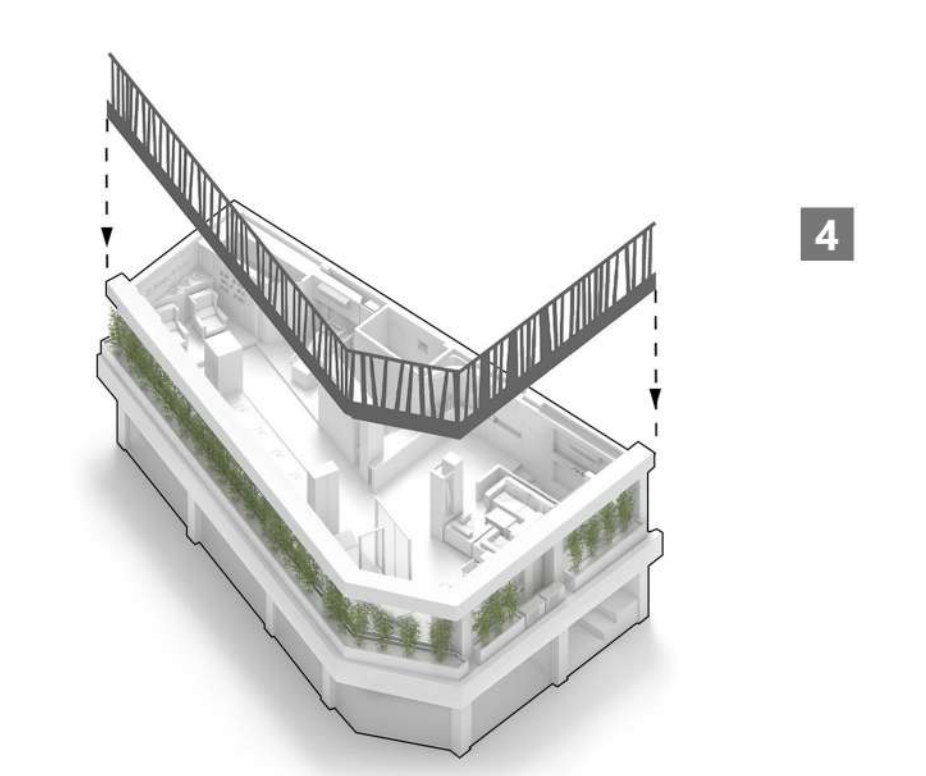
2

The two main spaces placed against each other, and other parts were connected by an axis that connects those two.



3

We arranged the client's requested spaces longitudinally, ensuring that each one maintained its independent function.



4

After the interior design of the unit and the arrangement of the furniture in the spaces, we added a pattern with black metal sheets and bamboo plants to the existing facade.







Due to the employer's request, we needed to reduce direct visibility to the outside. Considering the existing glass facade, which had two black composite strips at the top and bottom, we applied a pattern of black metal sheets and combined it with bamboo plants. This not only helped control the view and ensure security but also created a more distinctive facade.

INSIDE OUTSIDE

