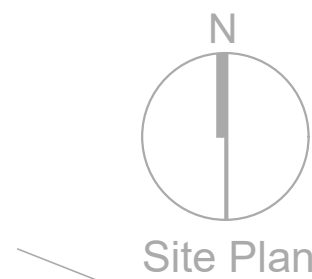
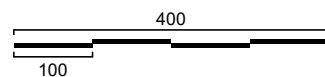
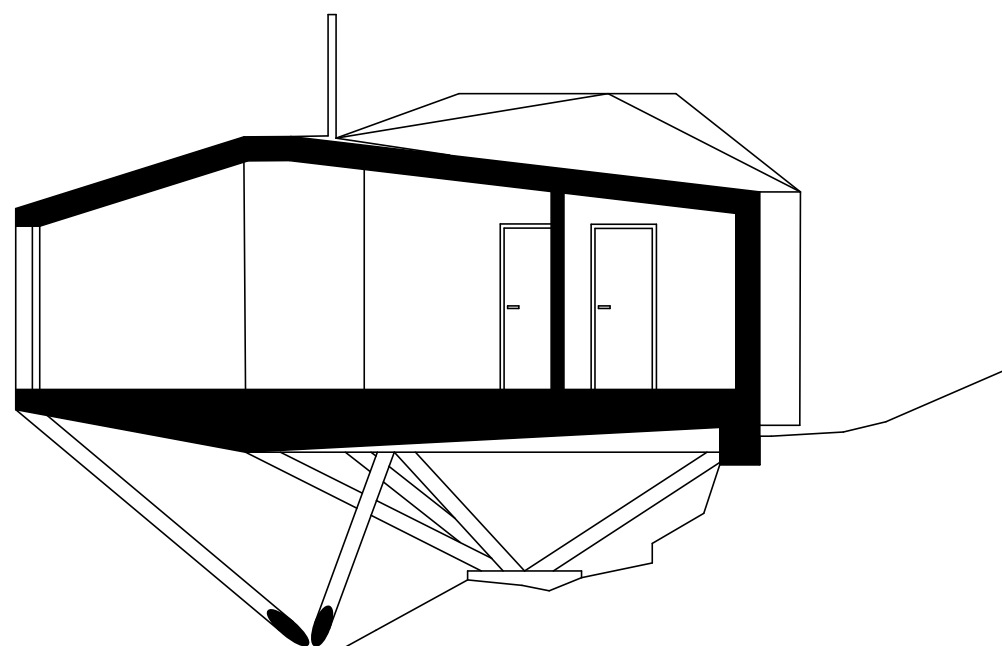
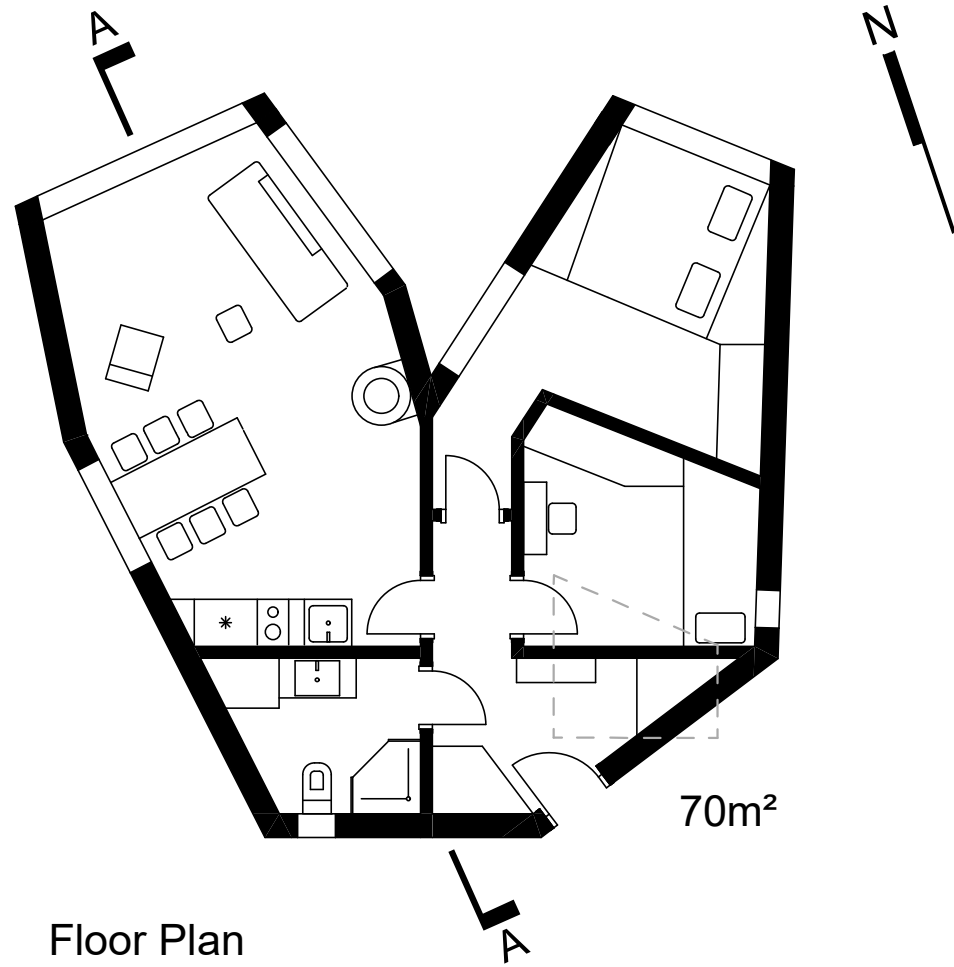


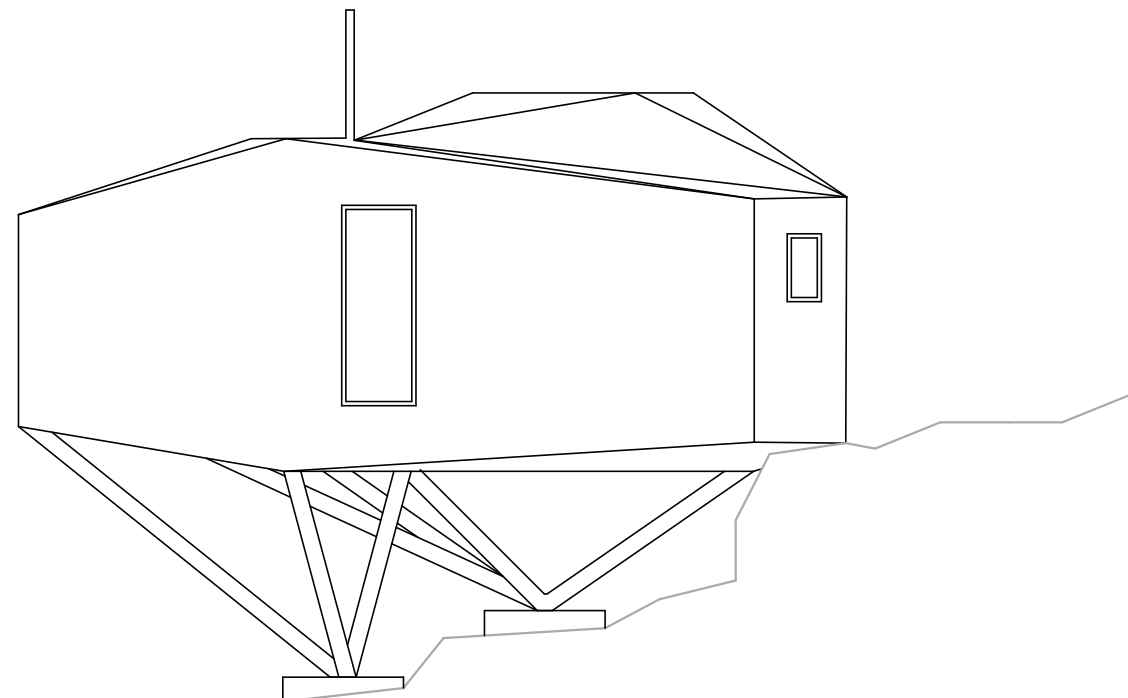
*A minimal intervention on one of the most important archaeological and medieval sites in Kosovo. Situated in close vicinity to the historic Artana Castle, the project has a minimal footprint on the land, and—standing on sloped columns—gives the impression that it floats in the air.*

*The project stands out for its geometric and material minimalism, setting a precedent for similar developments not just in Kosovo but across the region.*

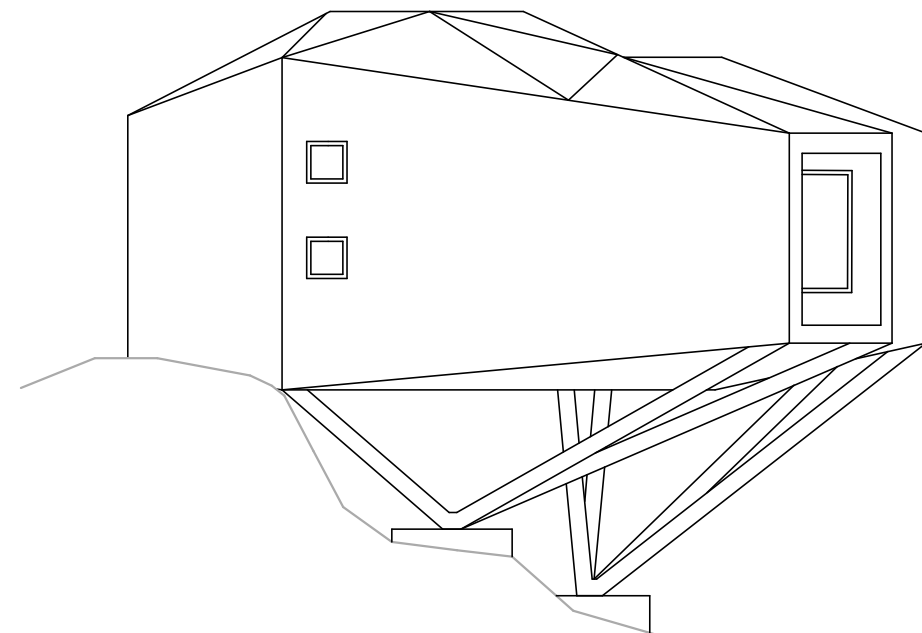




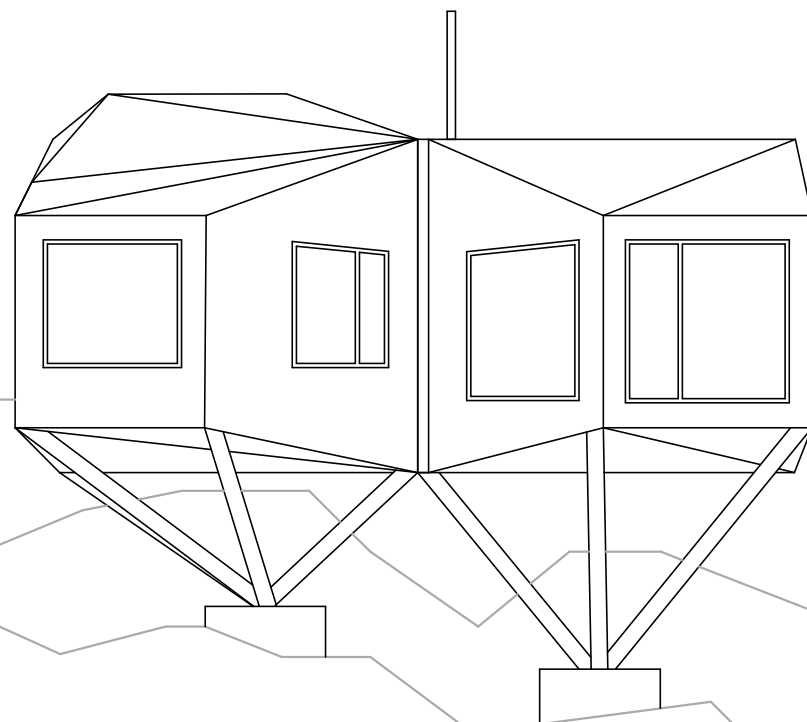




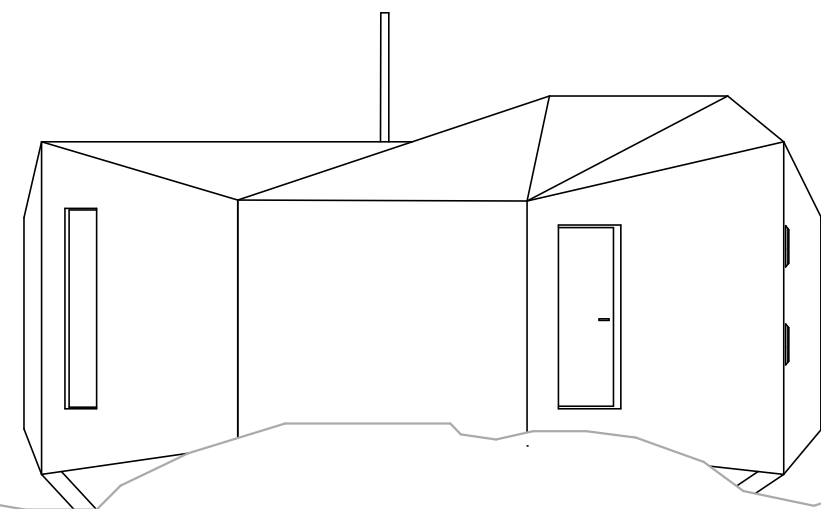
WEST



EAST



NORTH



SOUTH



















