

WORKPLACE

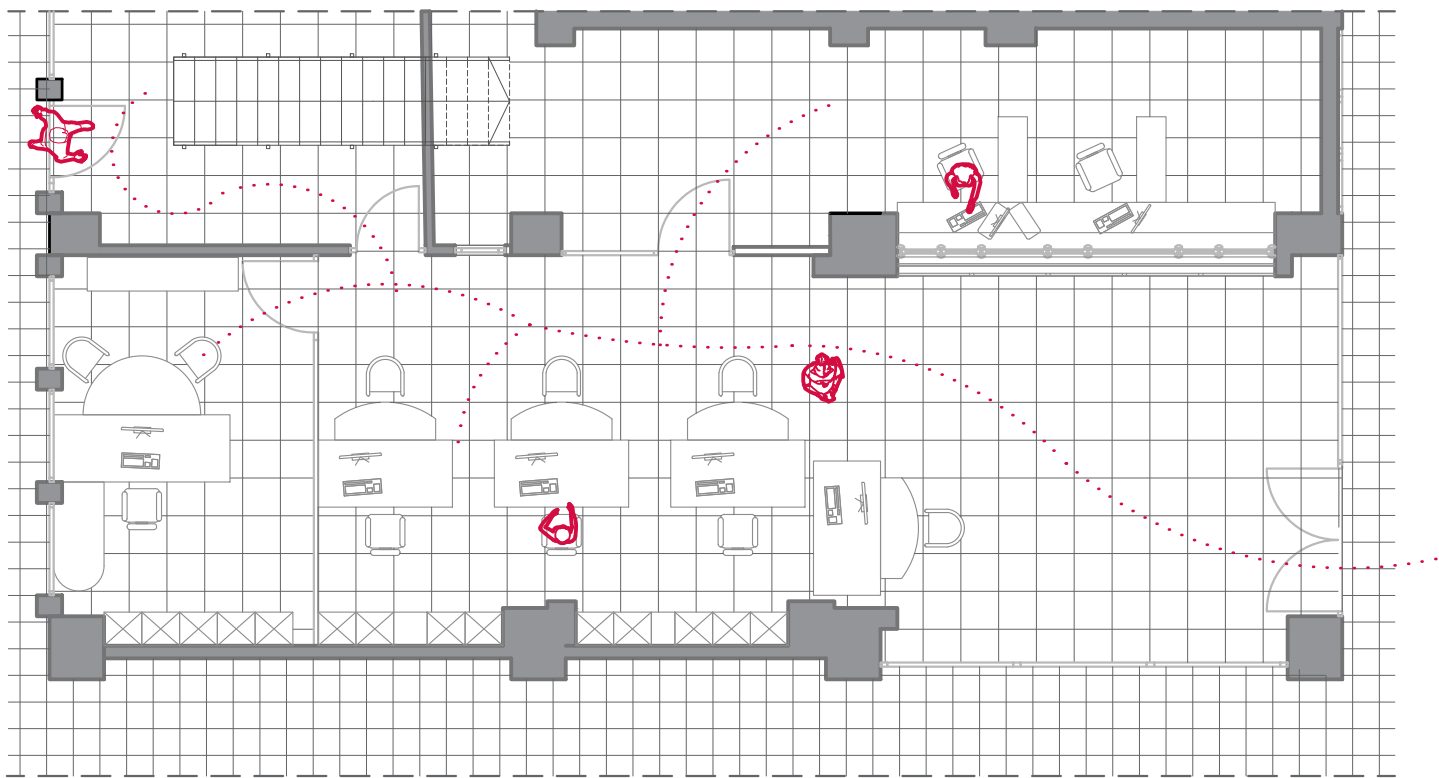
Bank interior

A complete transformation of an old, non-functional interior into a modern, open, and efficient space...

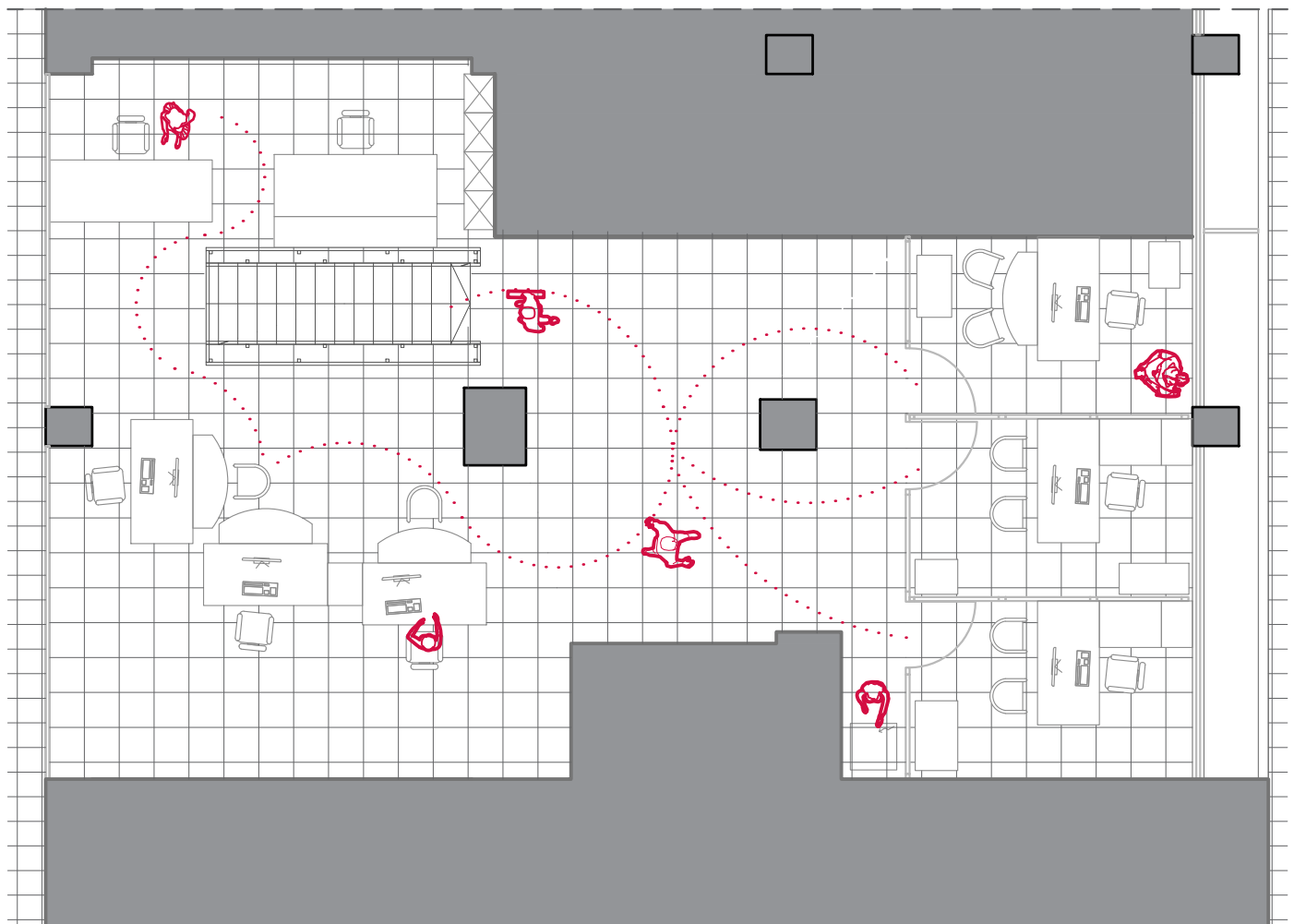
The design introduces natural materials, clean lines, and thoughtful spatial flow, turning a dated layout into a bright, welcoming environment.

Existing condition

Floor plan



level +0.00m

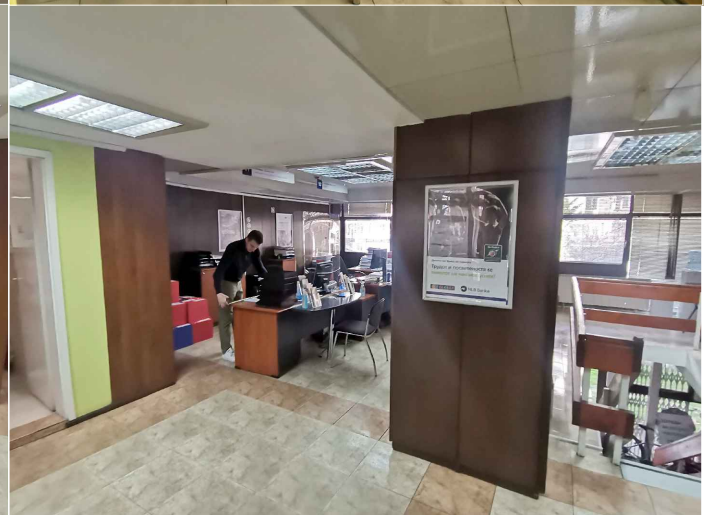
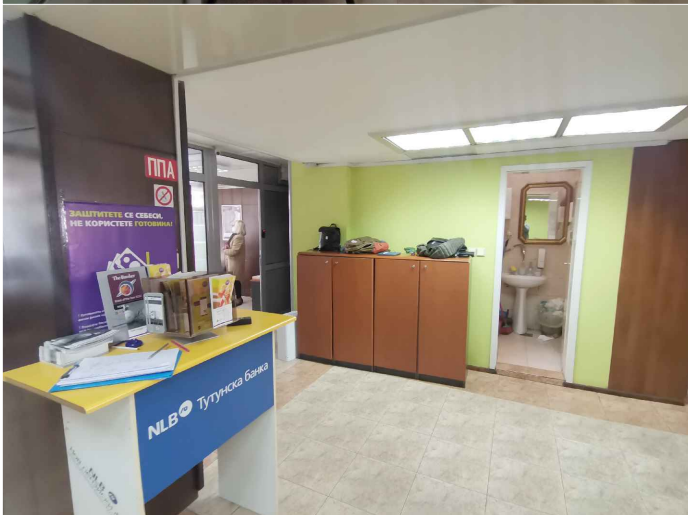
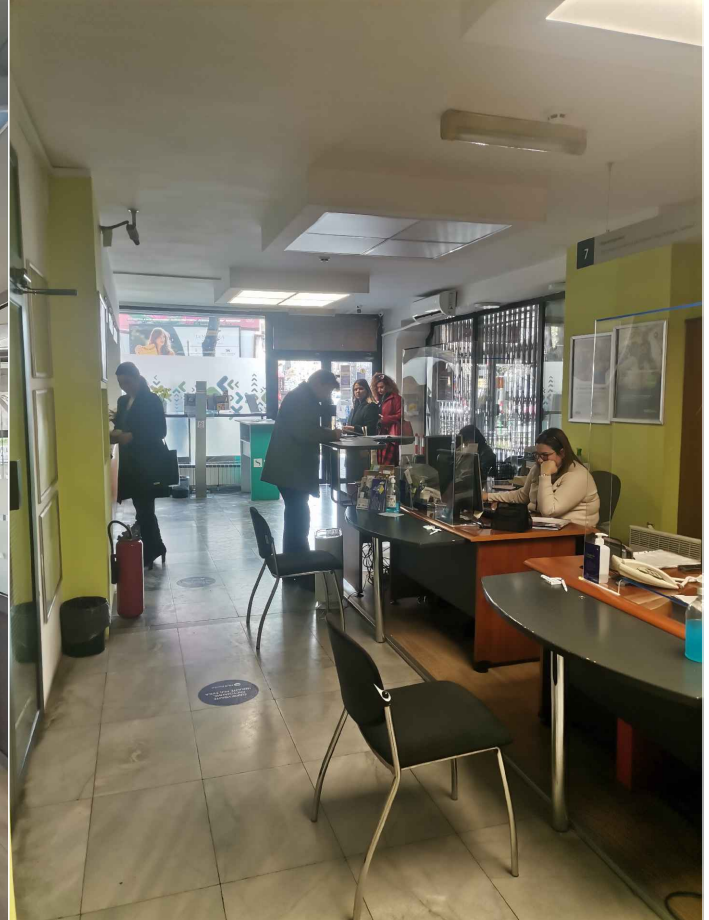
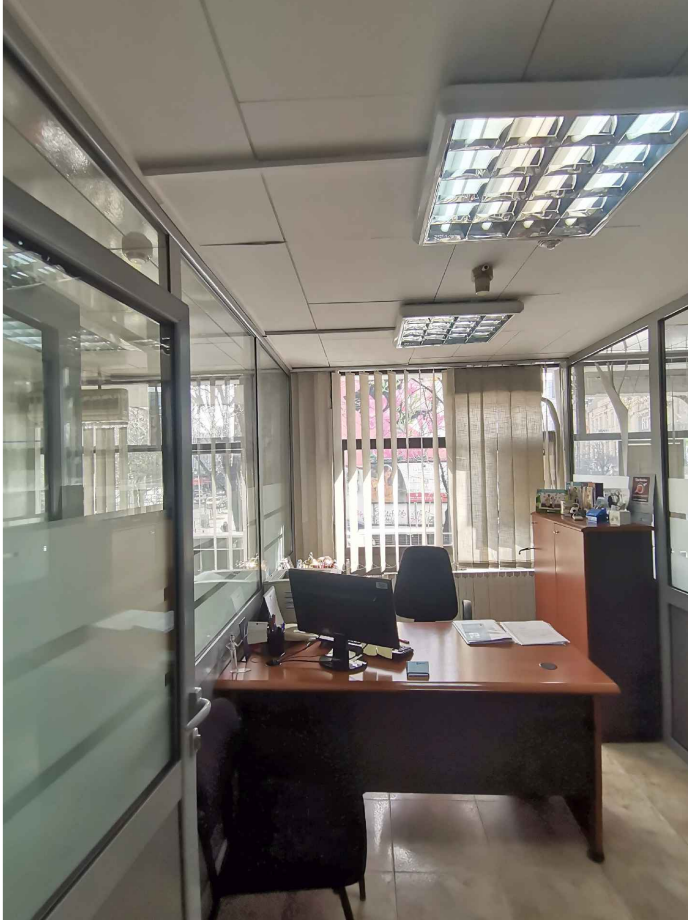
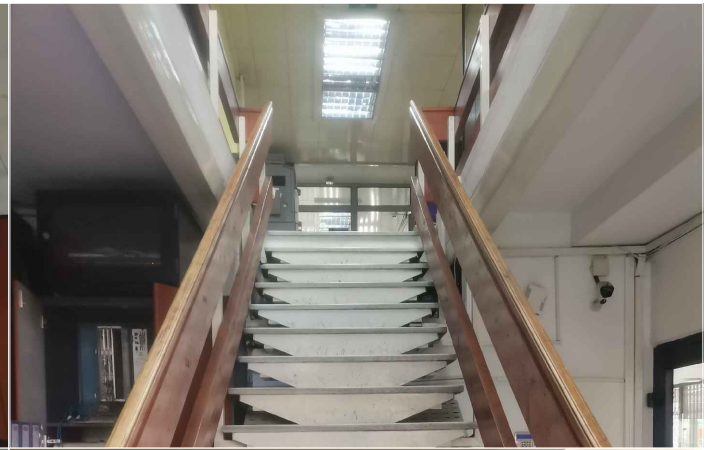
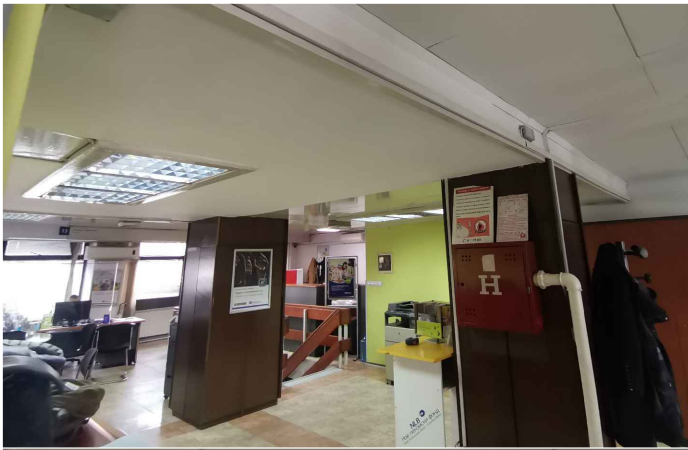


level +2.95m



Existing condition

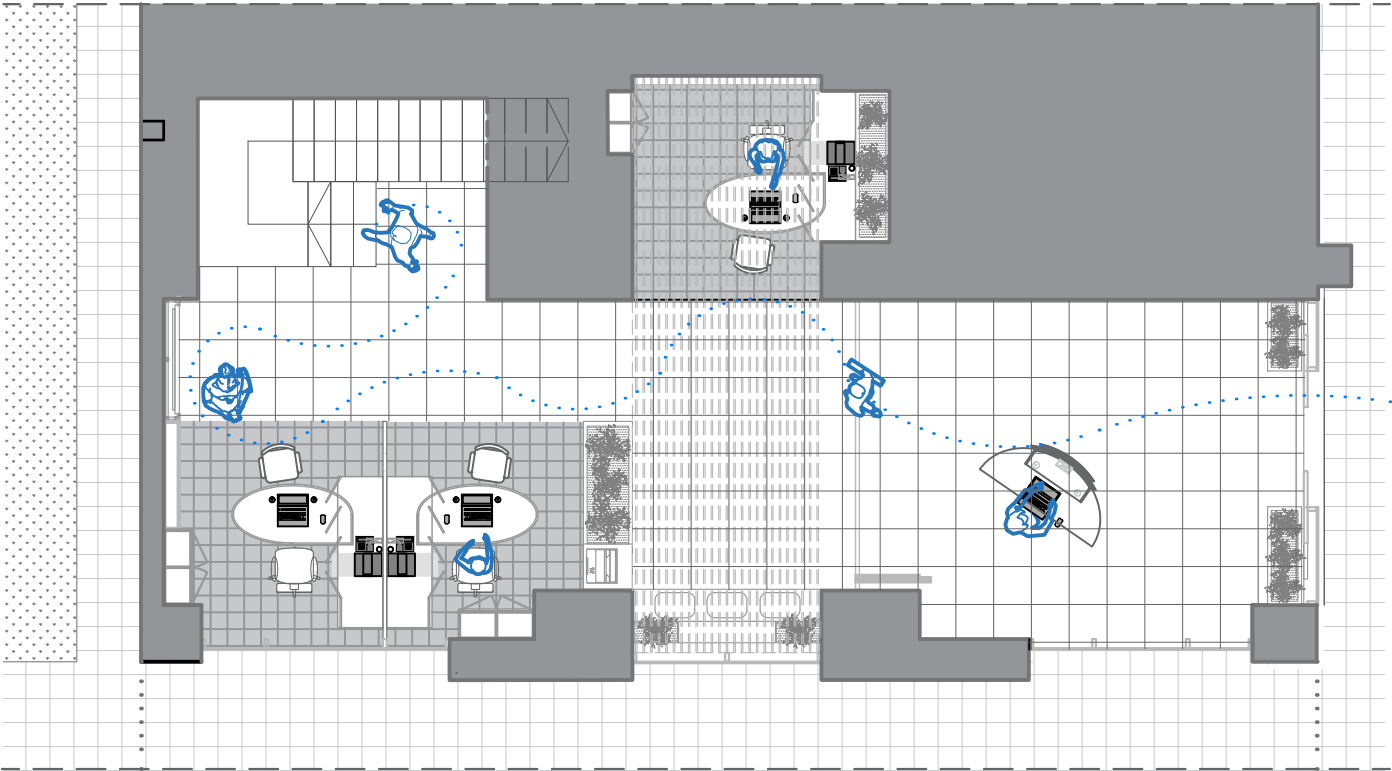
Pictures



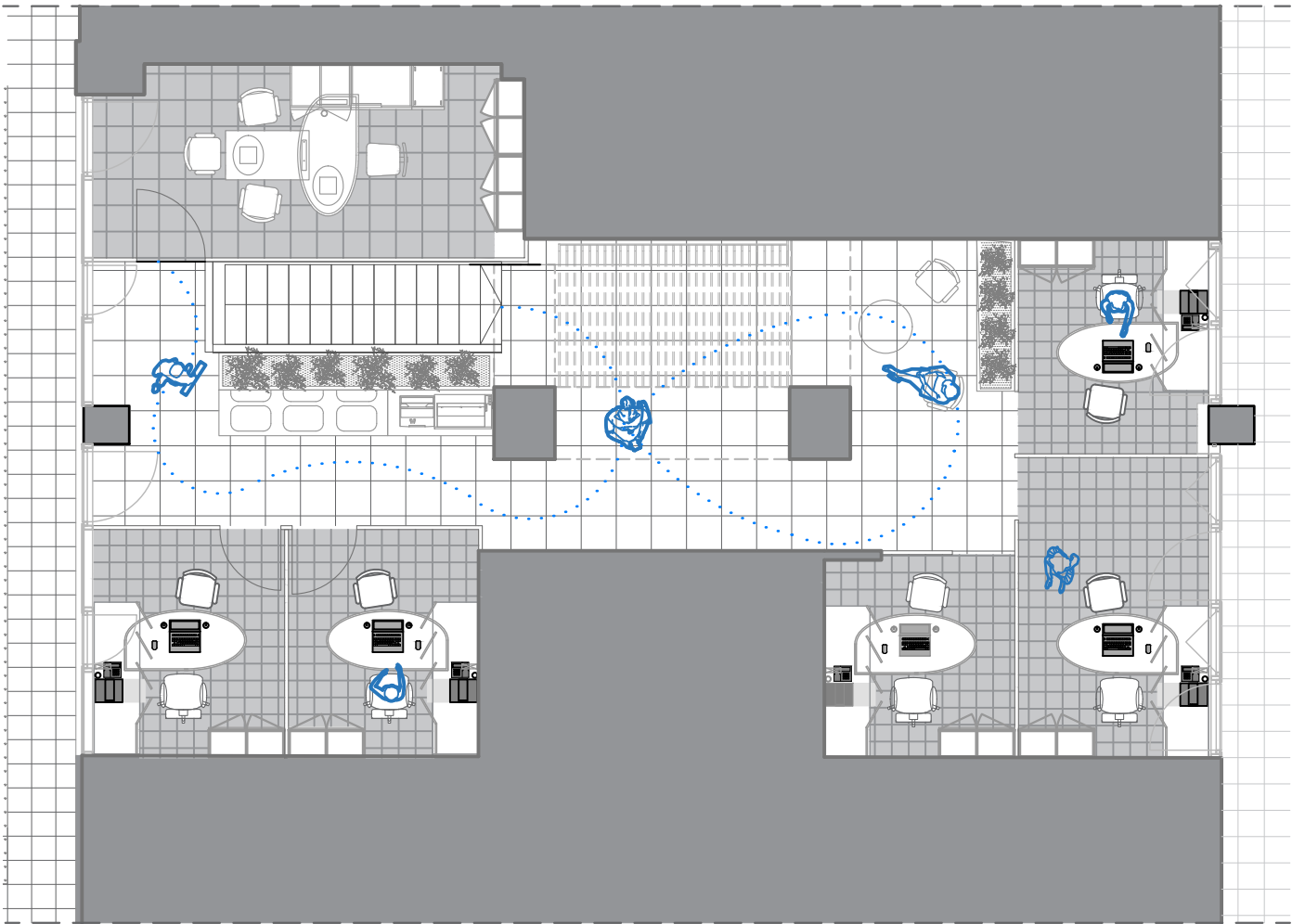
The design was outdated, with dark wood which made the working space even darker and uninviting. The organization of the working station was not within the standards of the company (technology, security etc) and there was no waiting areas for the clients.

Proposed design

Floor plan



level +0.00m

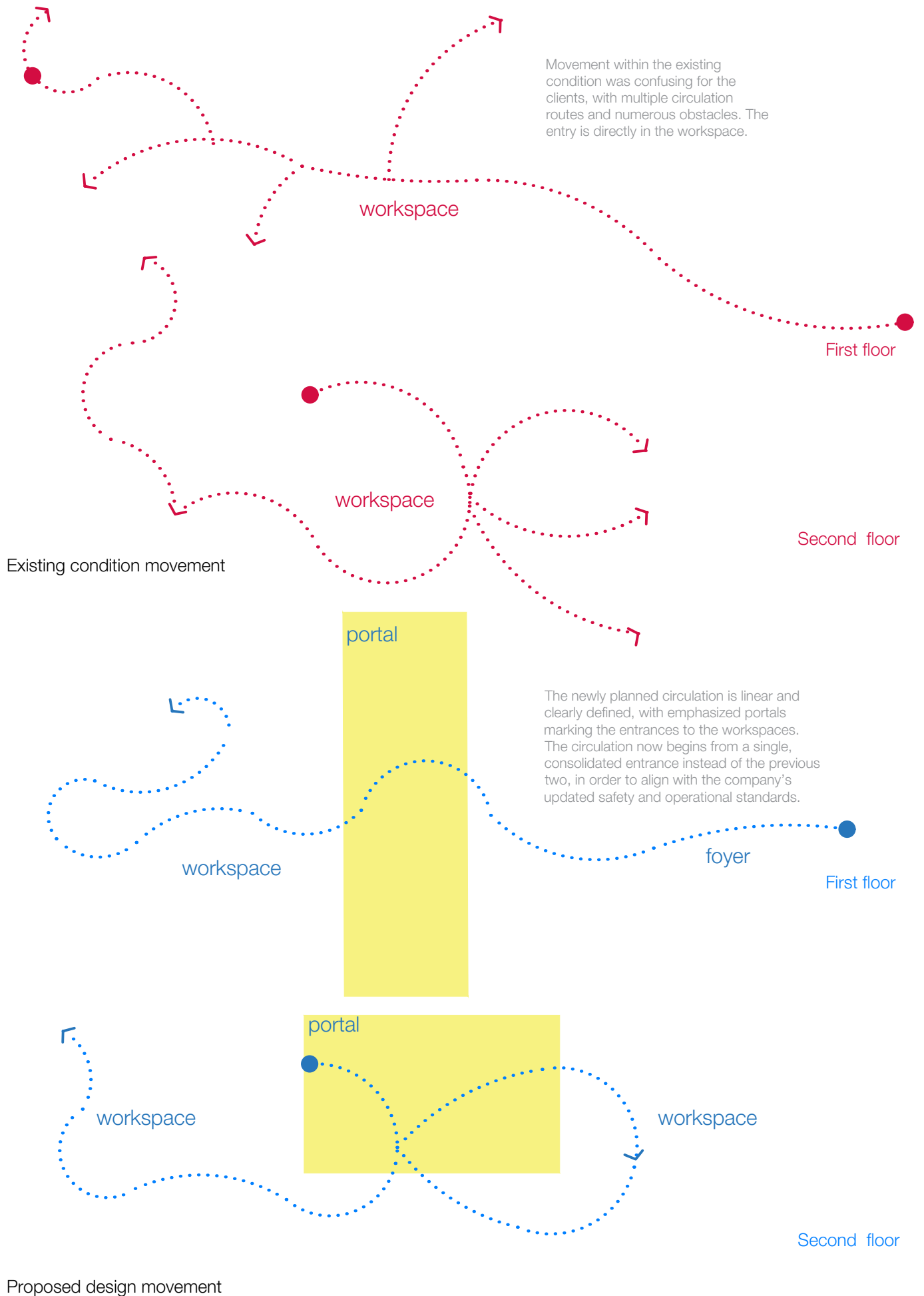


level +2.95m



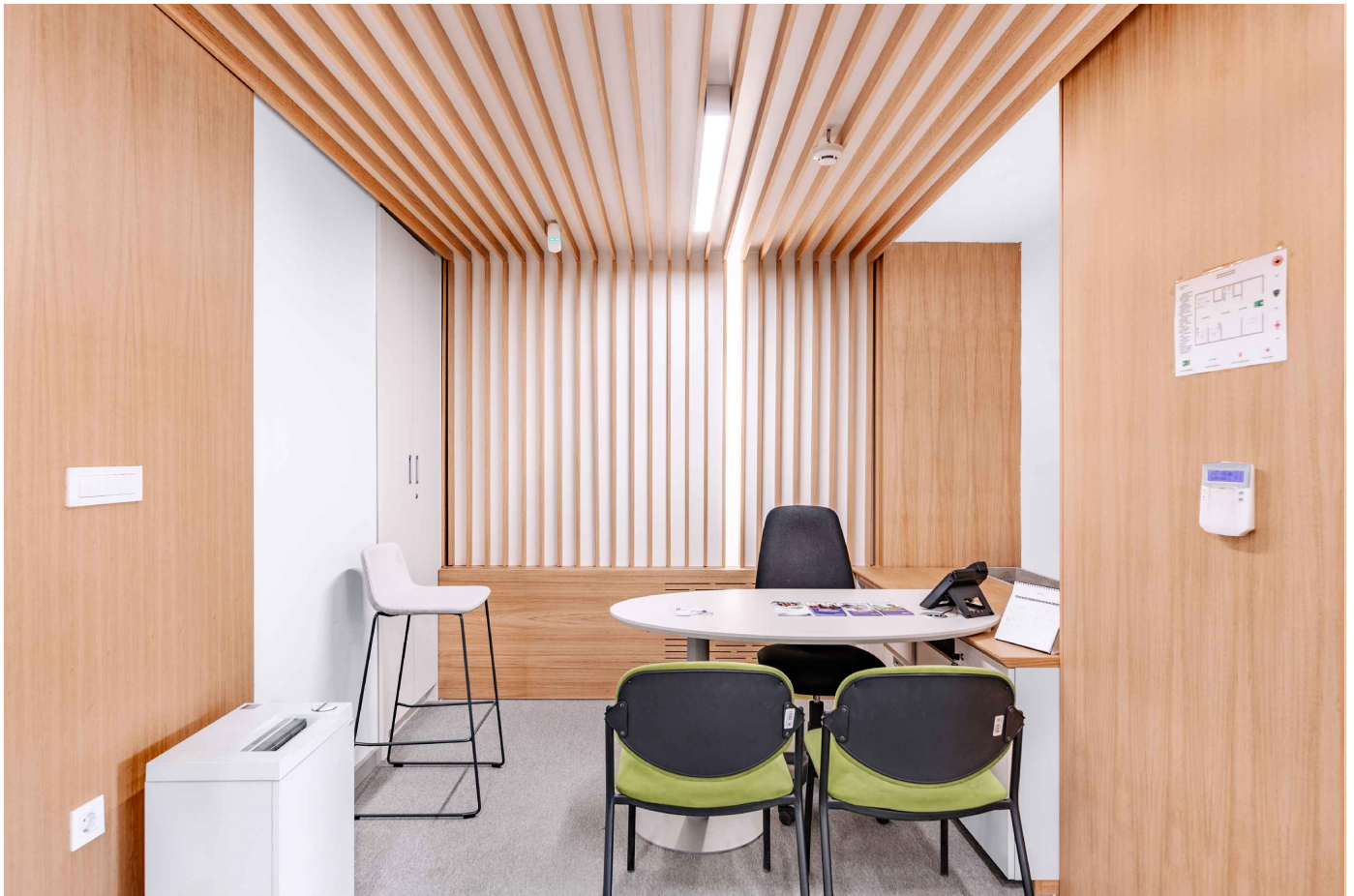
Old vs. new

Diagrams







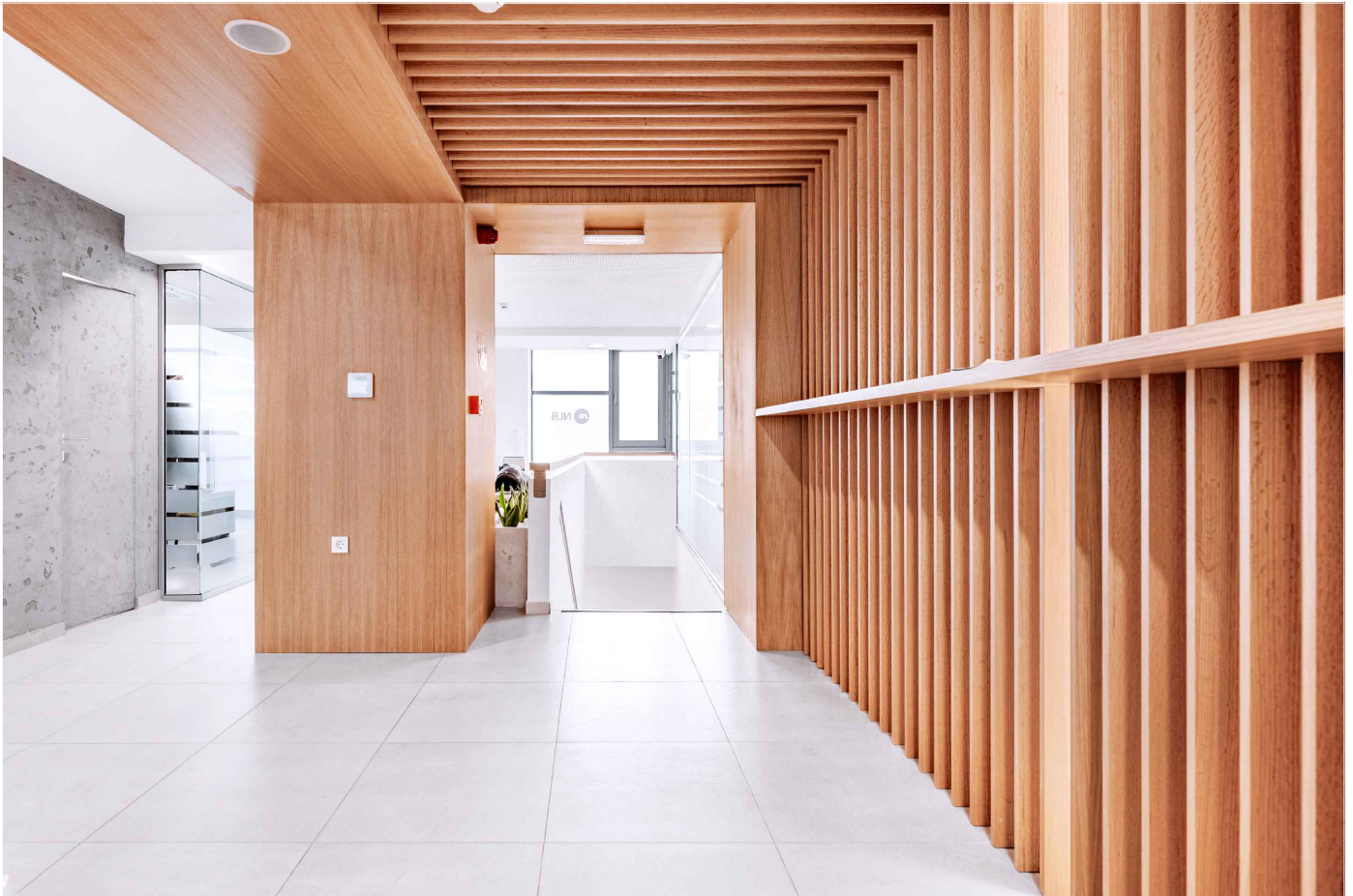


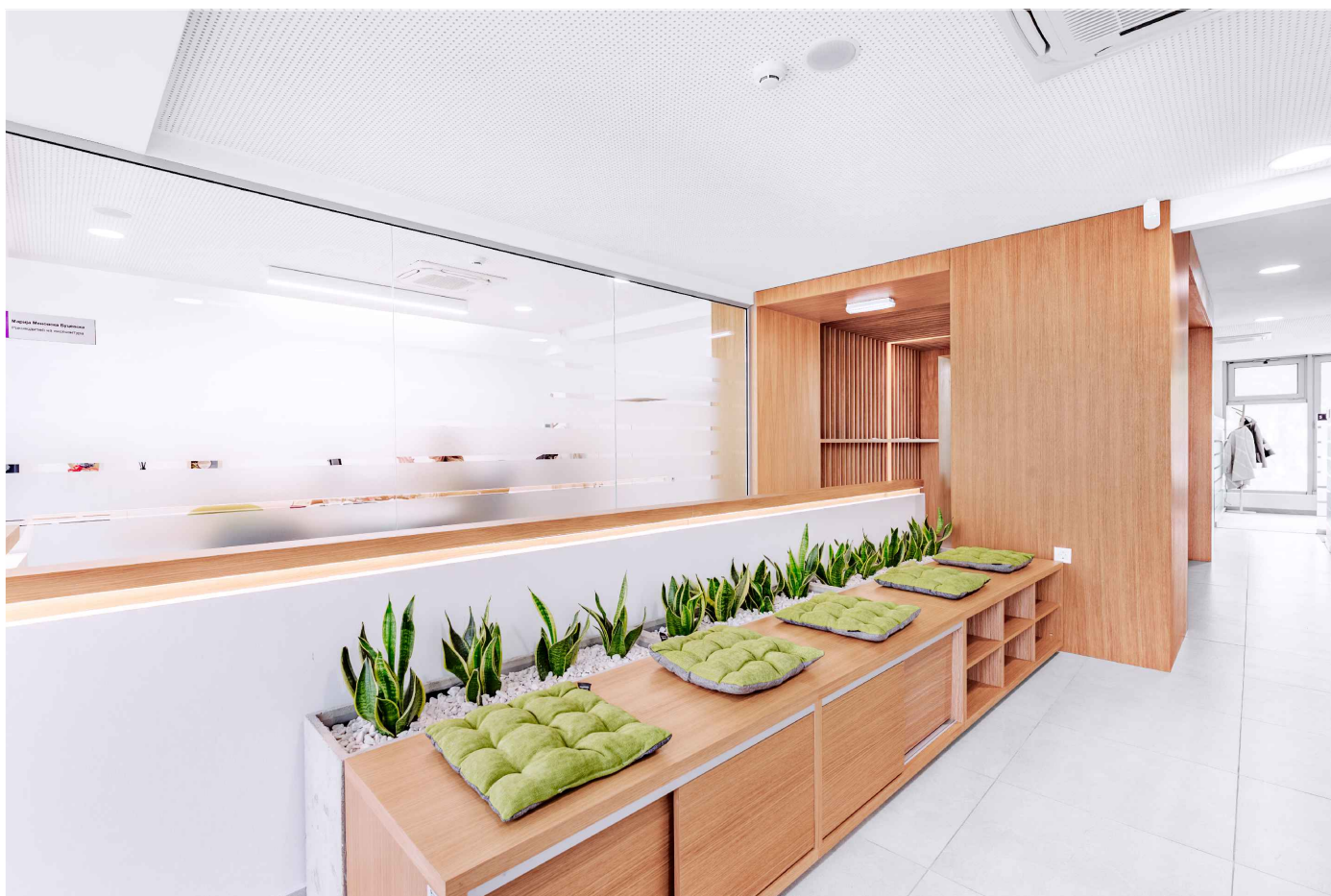












Description

The original layout was fragmented, with disorganized and confusing circulation patterns, multiple competing routes, and numerous physical obstacles. Its outdated layout lacked clarity, efficiency, and a coherent spatial hierarchy, resulting in disorienting and impractical navigation. The new design introduces a clean, linear circulation path, carefully structured to enhance spatial flow, orientation, and overall user experience. Distinctive portals now articulate the entrances to individual workspaces, adding rhythm, identity, and architectural character to the environment. Movement begins from a single, strategically located entrance, ensuring improved safety, streamlined access, and full alignment with the company's updated operational and safety standards.

The newly proposed interior design blends modern minimalism with warm natural textures. The dominant use of light-toned wood creates a warm, inviting atmosphere, while smooth concrete walls and light gray floor tiles add an industrial-modern contrast. The combination is clean yet characterful. The unfinished, textural surface of the concrete walls adds a raw quality. It contrasts beautifully with the clean, minimal finishes elsewhere. Vertical wooden slats along one wall and overhead form a visually dynamic corridor space, guiding movement while adding depth and rhythm. Frosted glass partitions with horizontal lines for privacy subtly separate areas while maintaining a sense of openness and transparency, giving the space a contemporary, airy feel.

The newly implemented waiting areas with built-in wooden benches offer informal seating and relaxation spots, breaking the formal tone often associated with corporate interiors. Planters with snake plants (*Sansevieria*) paired with white pebbles soften the hard surfaces and introduce greenery, promoting a calming, biophilic environment. The pops of green are inspired by the color of the company and are strategically placed for a soothing, fresh contrast without overwhelming the clean look. The lighting is bright, clean, and mostly integrated into the ceiling and walls, ensuring the focus remains on the materiality and textures rather than fixtures.

The design emphasizes linear perspectives — with long corridors, clear sightlines, and aligned materials guiding movement intuitively through the space. The layout feels open yet controlled, offering privacy through frosted glass while avoiding any sense of confinement. A harmonious blend of modern minimalism, organic warmth and edginess. It feels professional yet comfortable, structured but not sterile — ideal for contemporary office space. This newly redesigned interior, transformed an outdated, inefficient space into a modern, functional, and inviting environment.