



Spatial Concept

The location of the proposed terminal, its surrounding environment, and the available view-points have inspired a spatial layout where the main public areas—namely the entrance hall, departure lounge, and arrival lounge—are arranged along the perimeter of the building. These spaces are visually open both to the exterior views and to one another. Glass partitions separate them, creating a cohesive and flexible environment that can be easily reconfigured or adapted in the future as needed. In contrast, the terminal’s operational and enclosed service areas are concentrated within a central two-level core at the heart of the building.

Functional Layout

The entrance hall and adjacent spaces run parallel to the building’s eastern façade and the main access road. From here, views also open toward the Caucasus Mountains to the north. This zone includes check-in counters, a small food and beverage outlet, a waiting area, and public restrooms.

The northern side of the hall connects directly to the departure lounge, which extends along the terminal’s northern façade and offers expansive views of both the mountain range and the runway. The hall and lounge are separated by a transparent glass partition. Between them lies the infrastructure for passenger processing, including organized queuing zones, two security checkpoints, and two passport control stations, which can be operated based on demand.

The departure lounge also features a second small food outlet and additional restrooms. A VIP service zone is located on a mezzanine level (elevation 3.00), accessed

via an open staircase. This area overlooks both the lounge and the runway and includes a small balcony. Adjacent to the departure lounge and close to the control stations, within the terminal’s enclosed volume, are dedicated workspaces for supporting services.

The arrival lounge, like the departure lounge, is separated from the central hall by a glass parti-tion and runs along the terminal’s southern façade. Upon entry, passengers have access to re-strooms, followed by passport control (if necessary), and finally the baggage claim area. Addi-tional restrooms and a nearby security office are also located in this zone.

Administrative and staff offices are situated on the second level of the central enclosed volume, at elevation 3.00, accessible from the main hall via an enclosed staircase. This level includes meeting rooms, small and medium-sized offices, staff locker rooms, restrooms, a break area, and technical rooms. The office area is wrapped in a U-glass enclosure that varies in transparen-cy—semi-transparent for office spaces and opaque in other zones—based on privacy require-ments.

Site Planning

The site layout preserves an open, landscaped buffer between the terminal and the road, with low greenery. This area accommodates ground-mounted, three-dimensional signage displaying the terminal’s name. A parking lot with 60 spaces is located to the northeast of the building, while a designated bus drop-off zone is situated near the southern corner. Outdoor equipment serving the building’s engineering systems is housed in a separate, en-closed unit at the southwest corner of the terminal, near the property boundary.

Materials and Finishes

The main structural frame of the building features arched elements made from pigmented rein-forced concrete. The suspended ceiling consists of aluminum baffles, with integrated LED point lighting. Mechanical and electrical systems (air ducts, wiring, fire safety, etc.) are partially con-cealed above the ceiling.

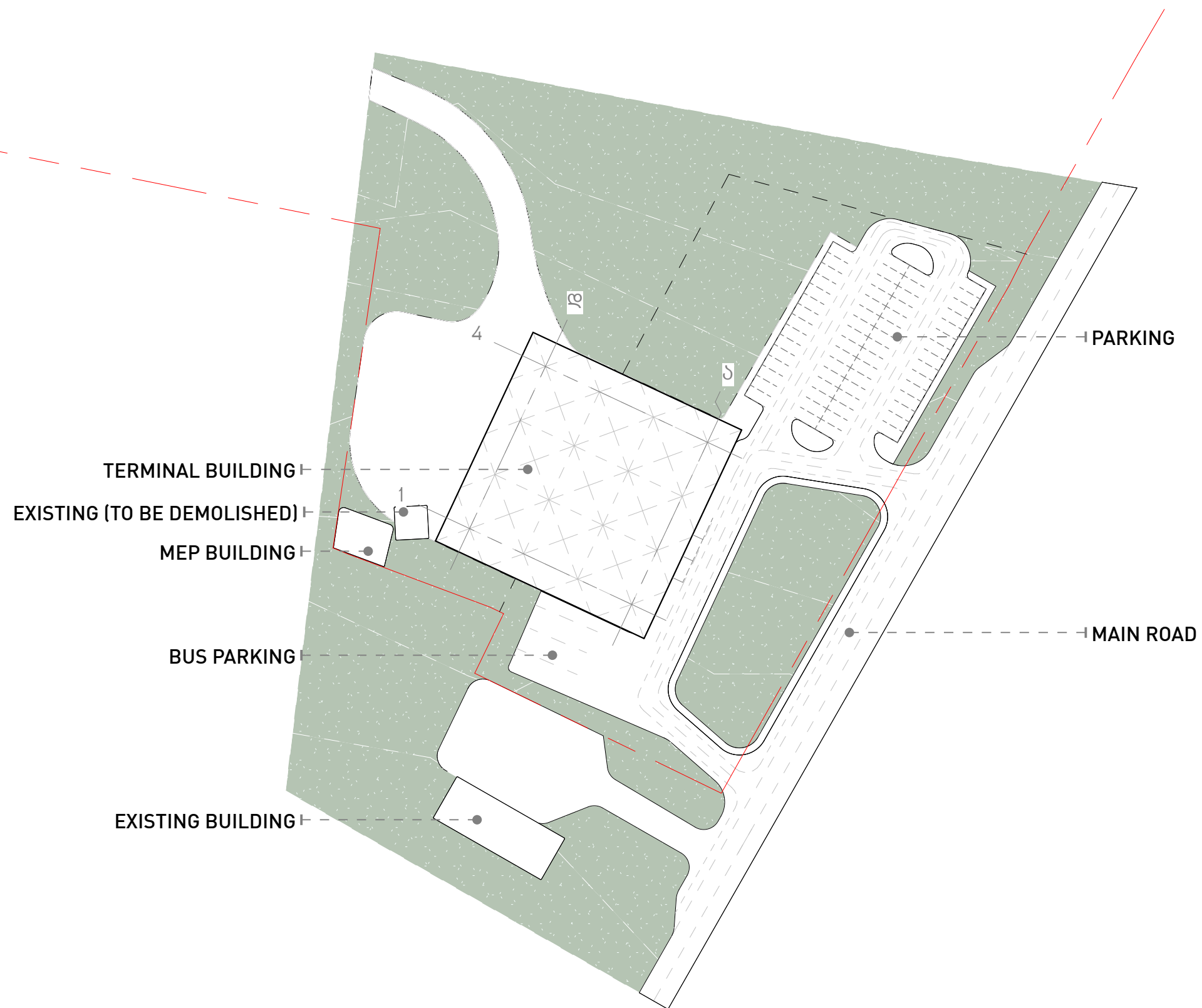
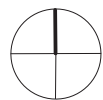
The three primary public zones—the hall, departure lounge, and arrival lounge—are divided by 2.2-meter-high glass partitions. The central enclosed operational volume is clad in U-glass panels, with variable transparency tailored to the function of adjacent rooms.

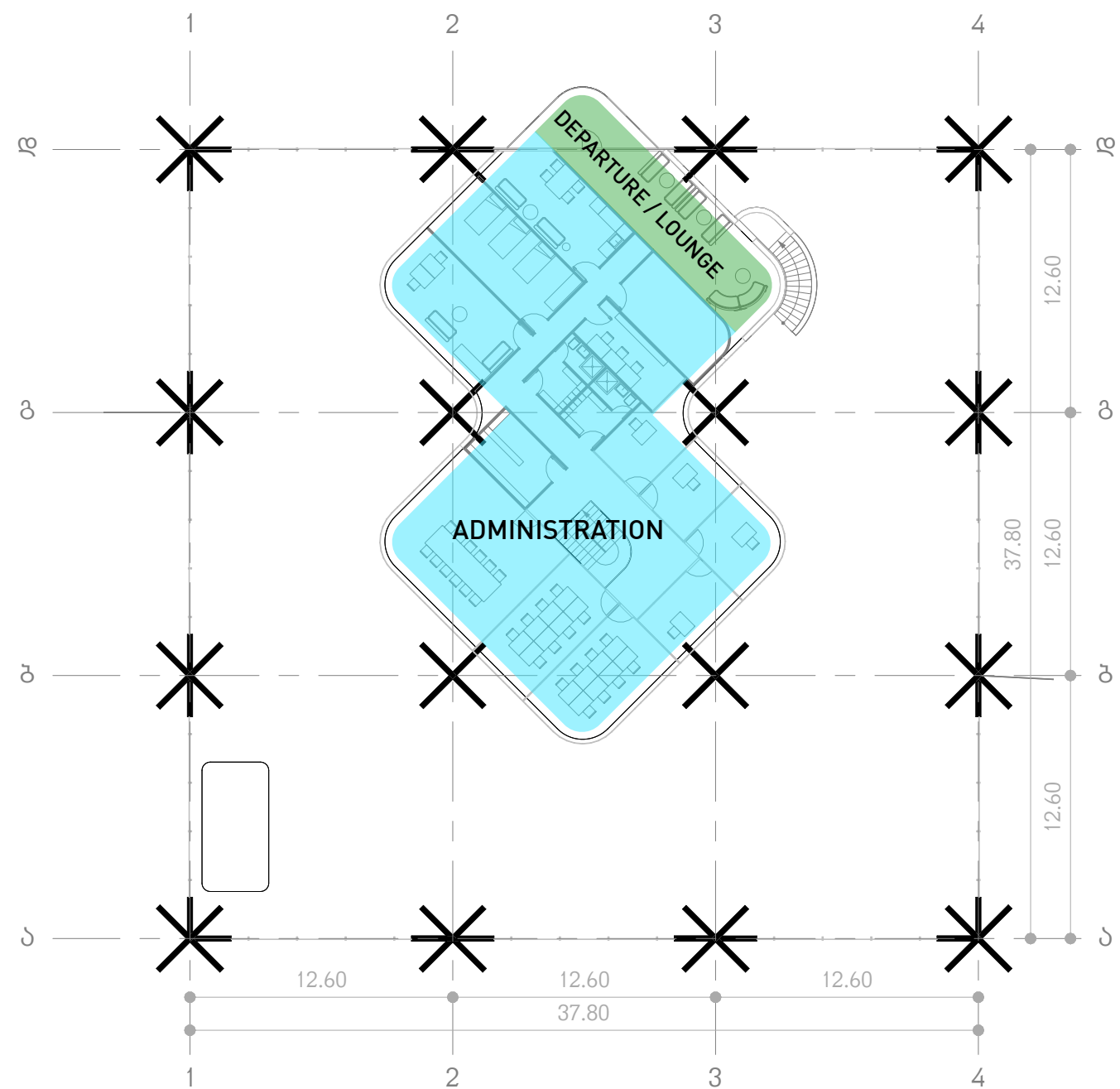
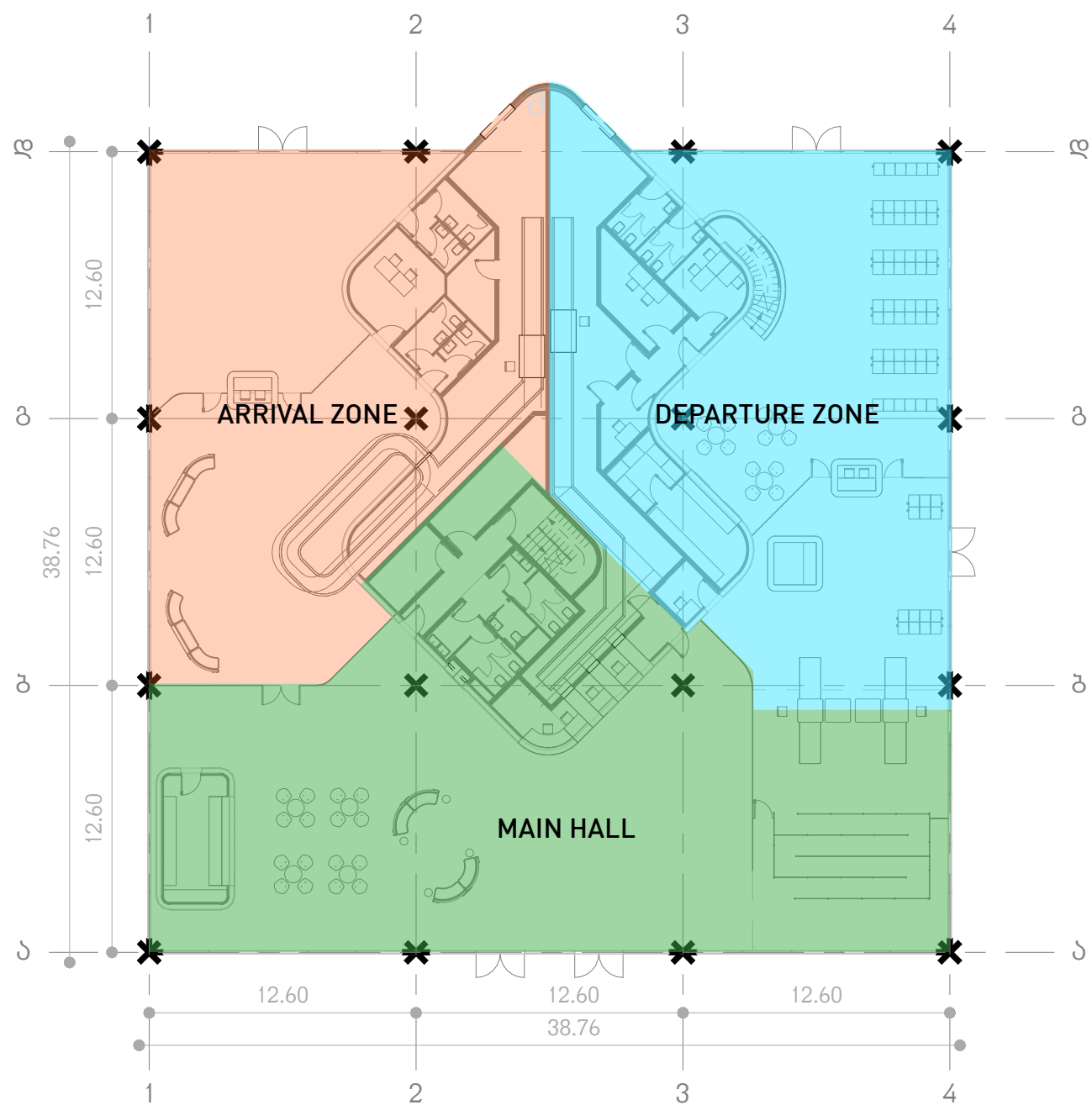
Structural System

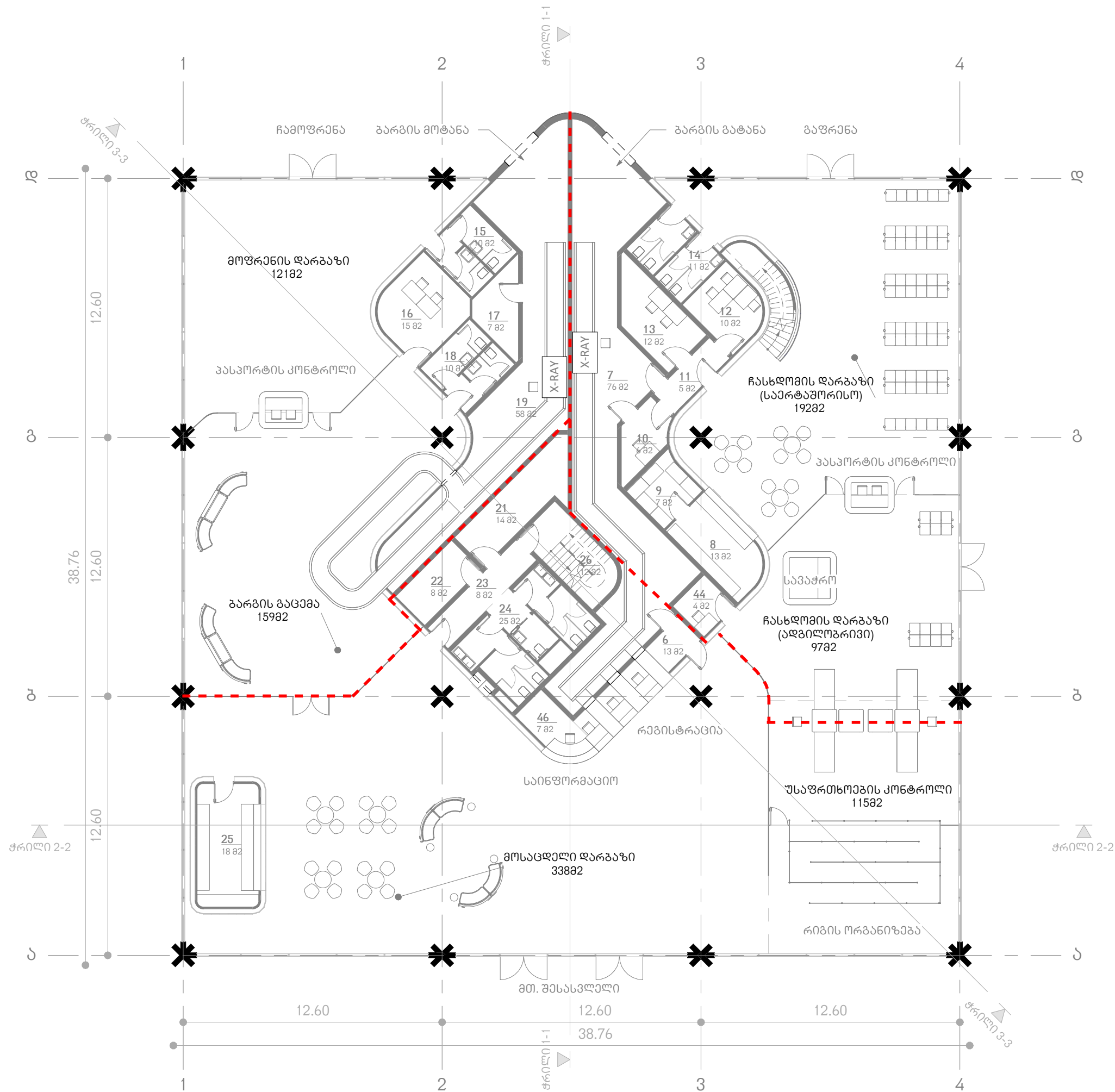
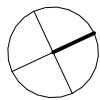
The building’s structural system relies on reinforced concrete. Load-bearing elements consist of cross-shaped concrete columns connected by arches, roofed with concrete slab.

Building Size

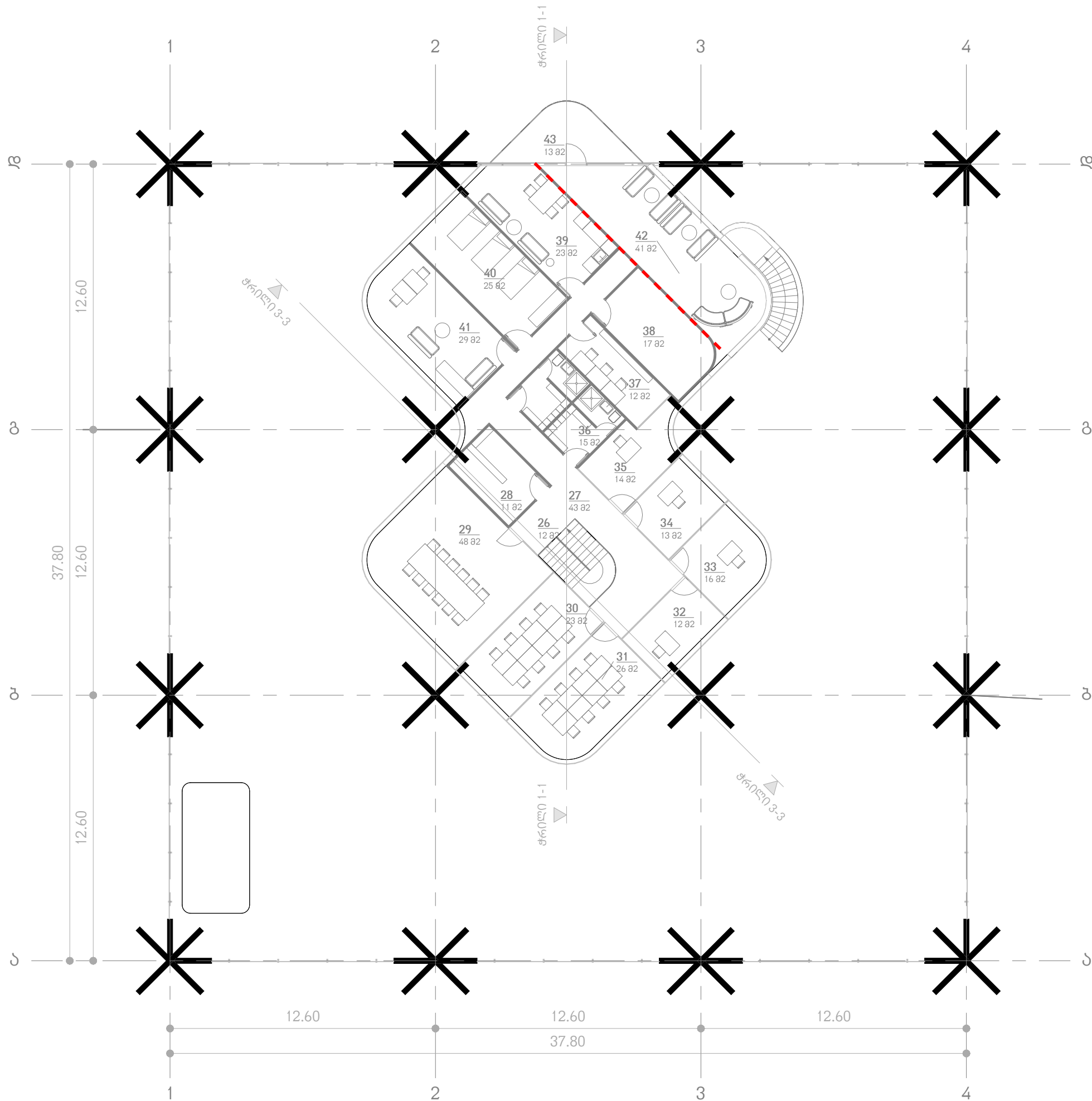
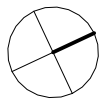
The total building area is 1,770 square meters—1,428 sq.m at ground level (elevation 0.00) and 342 sq.m on the mezzanine level (elevation 3.00)—with a total height of 7 meters.

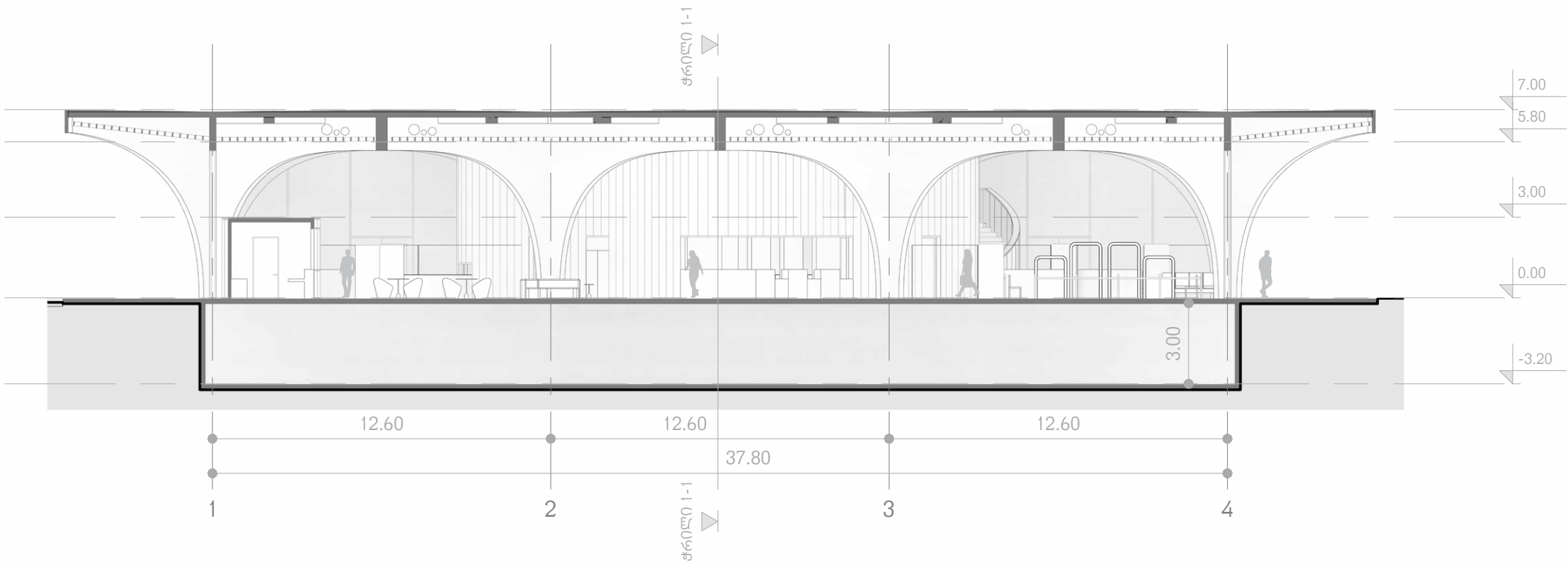


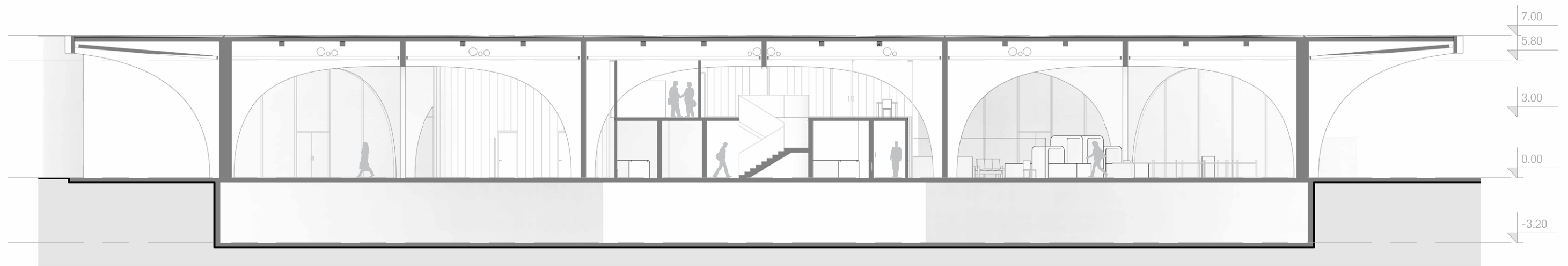


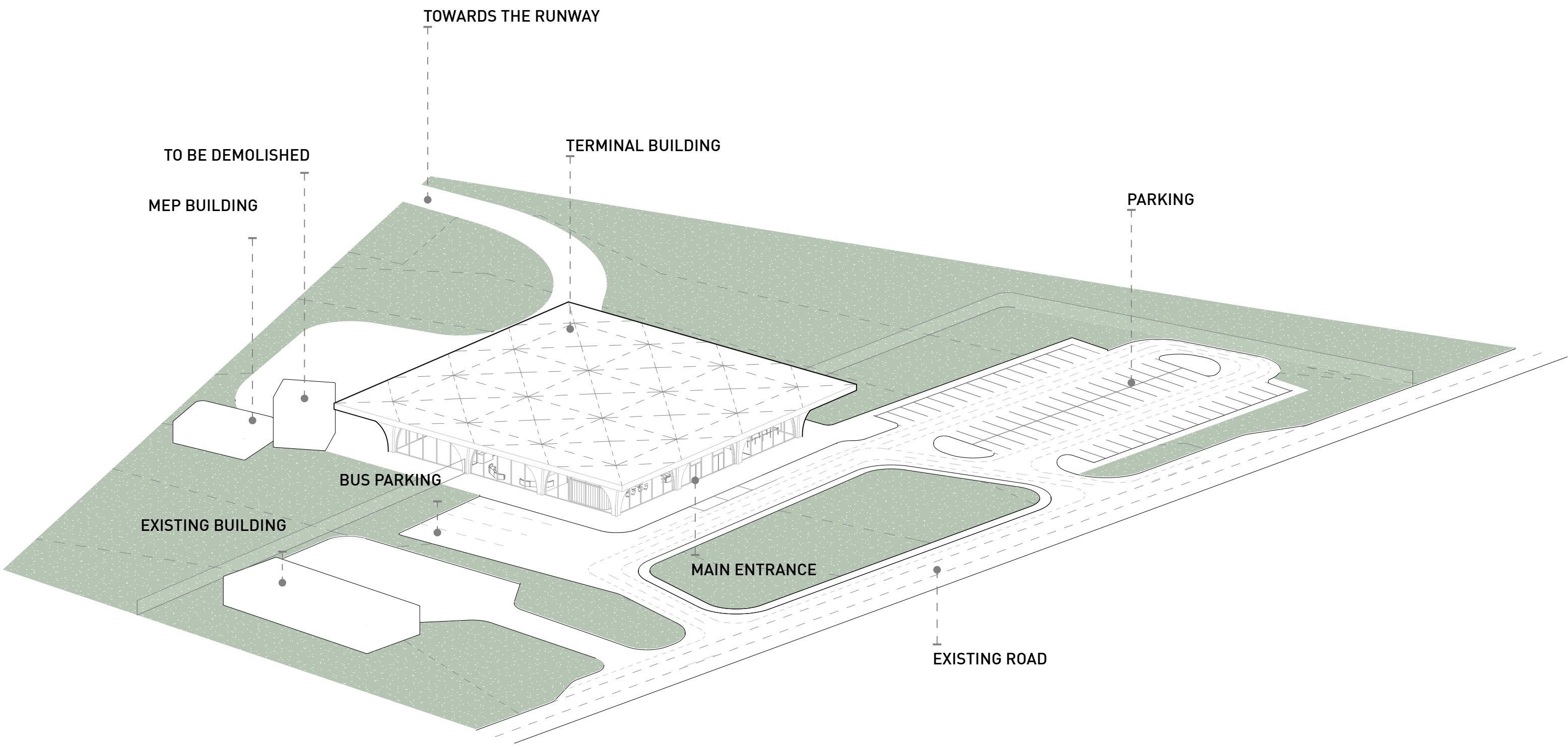


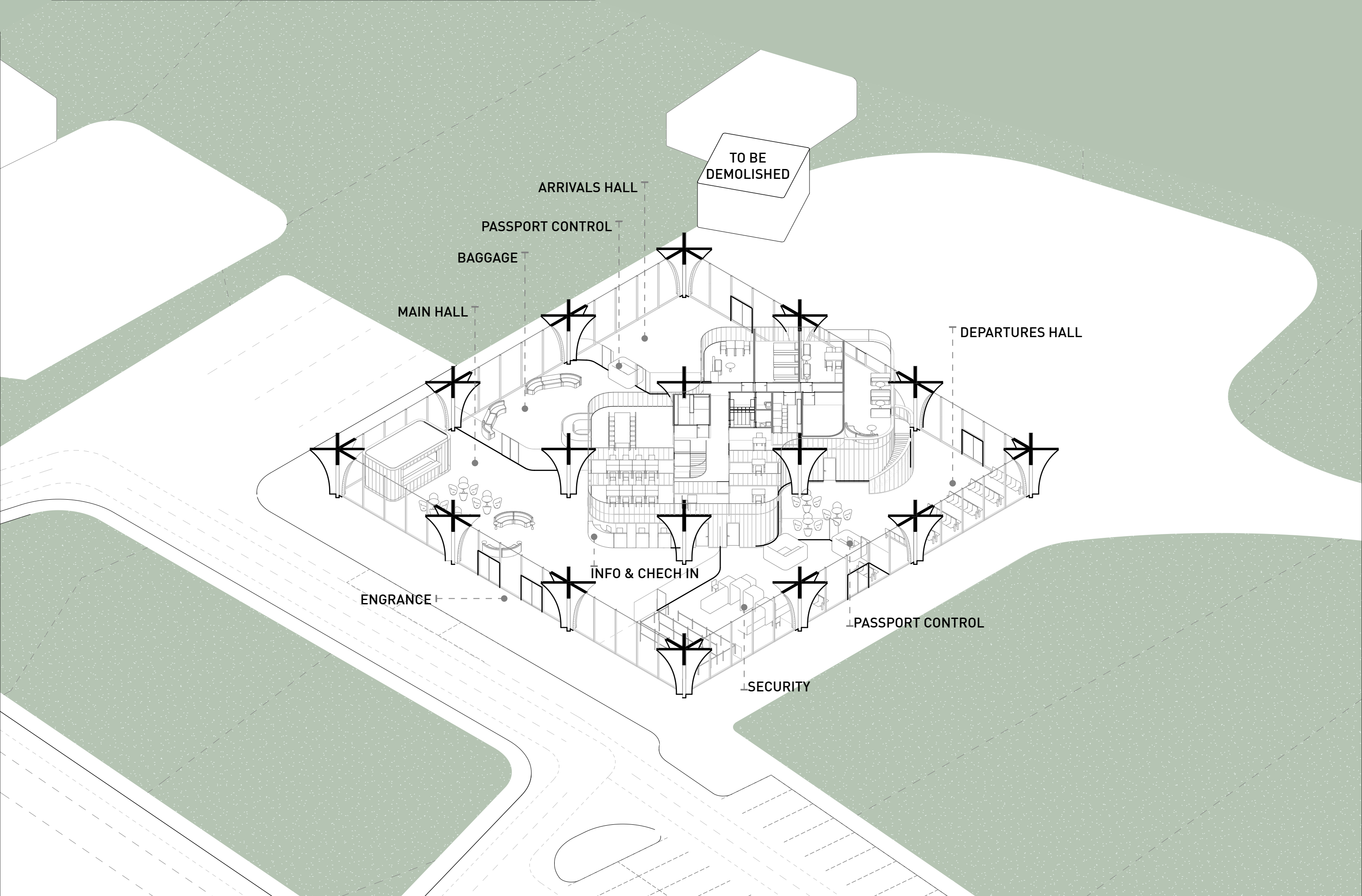
- სართულის ექსპლიკაცია
- 2 უსაფრთხოების კონტროლი
 - 3 მოგზაურობის დარბაზი
 - 3 ჩასვლის დარბაზი (საერთაშორისო)
 - 4 ბარბის გაცემა
 - 5 მოსაგდელი დარბაზი
 - 6 რეგისტრაცია
 - 7 ბარბის მიღება
 - 7 ბარბის მიღება
 - 8 კაფე
 - 9 კაფის სამზარეულო
 - 10 კონტროლი
 - 11 ჰოლი
 - 12 ჰოლი
 - 13 დაცვის ჰოლი
 - 14 სანაკვეთი
 - 15 სანაკვეთი
 - 16 ჰოლი
 - 17 ტექნიკური ოთახი
 - 18 სანაკვეთი
 - 19 ბარბის გაცემა
 - 19 ბარბის გაცემა
 - 21 დამხმარე სათავსო
 - 22 ტექნიკური ოთახი
 - 23 ჰოლი
 - 24 სანაკვეთი
 - 25 ბარი
 - 26 კიბის უჯრედი
 - 44 პერსონალური შემოწმების სივრცე
 - 45 ჩასვლის დარბაზი (ადგილობრივი)
 - 46 სანიტორია











ARRIVALS HALL

TO BE
DEMOLISHED

PASSPORT CONTROL

BAGGAGE

MAIN HALL

DEPARTURES HALL

INFO & CHECH IN

ENGRANCE

PASSPORT CONTROL

SECURITY

