



PORTFOLIO – Social Services Home Nezábudka (Forget-Me-Not), Leopoldov

Project name: Social Services Home Nezábudka (Forget-Me-Not), Leopoldov

Investor: The Town of Leopoldov

Design: 2017 – 2020

Competition: 2023

Construction site: Štúrova 454/2, Leopoldov

Basic characteristics and the context of the creation of the work

The Social Services Home Nezábudka in Leopoldov is nestled within a quiet urban neighbourhood, where detached family homes dominate the landscape. In this context, only two buildings—a kindergarten and a health centre—gently stand out, quietly shaping the character of the area. Nezábudka introduces a new yet naturally fitting element to the neighbourhood: a day care centre for seniors that enriches public life while harmonizing with the domestic rhythm of its surroundings.

The proposed function is housed in a former panel building, once a Public Security station and later used as a municipal library. After the library was relocated to newly renovated premises near the town hall, the building became available for a new purpose.

The reconstruction was carried out with respect for the original scale—without increasing its footprint or height. As a result, the building retained its quiet presence and proportions, blending seamlessly into the surrounding fabric while preserving the memory of the place and the layers of its past.

URBAN DESIGN SOLUTION

The existing building, originally used for the Public Security Department and two residential units, has maintained its original floor plan and height. No significant changes have been made to its structure – no extensions or additional floors. The building has been upgraded to meet current technical and legislative requirements, particularly regarding thermal insulation standards, which led to slight increases in the thickness of certain construction elements. The original urban design remains unchanged, with the building retaining its standalone character within the garden, blending harmoniously with the surrounding residential neighbourhood.

The building's entrance system has been adjusted to ensure full accessibility. The original main entrance from Štúrova Street, which included stairs leading to the raised first floor and was therefore unsuitable for the new function, has been supplemented with a new, barrier-free entrance from the courtyard level. This revamped entrance is accessible through a pedestrian pathway from 1st May Street and is equipped with an elevator, providing easy access to all floors while ensuring seamless integration with the surroundings. Two parking spaces for people with disabilities have been added in the courtyard, accessible via a sliding gate from 1st May Street. An additional nine parking spaces for visitors and staff are in front of the building, directly adjacent to the main entrance.

The courtyard has been enhanced as a green garden space, designed for relaxation. The basement has been connected to an outdoor terrace, providing a multifunctional area for various activities such as group exercises, reading, small performances, concerts, or other cultural events. The terrace is equipped with sun shading solutions, ensuring a pleasant environment for outdoor use.

ARCHITECTURAL DESIGN SOLUTION

While the original urban and massing design remains unchanged, the architectural expression of the building has been subtly transformed. The building's facade now exhibits a shift towards asymmetry, despite maintaining centrally located entrances and a symmetrical core. This asymmetry is emphasized by the variation in window perforations and glazed walls, which correspond to the different functions of the interior spaces. The most prominent asymmetry appears in the courtyard, where the staircase window has been positioned asymmetrically, and a balcony has been added to the social room/meal distribution area. The large glass surfaces in the basement are oriented towards the newly designed terrace.

The building's material palette combines two main elements: the primary mass is enveloped in a compact ETICS insulation system with decorative plaster and vertical grooves, while the secondary masses of the entrances are clad with fiberglass-reinforced concrete panels and glass. The windows are framed with an aluminium system in black-grey, and exterior shading solutions have been integrated to control sunlight exposure and ensure comfort.

Interior spaces are characterized by simple, functional white walls, with surface finishes that correspond to the function of each room.

Smooth white ceilings with attached lighting complement the neutral walls, while the floors vary according to the room's function, including rubber flooring, tiles, and carpets.

SPATIAL DESIGN SOLUTION

Compared to the original layout (Public Security Department and two residential units), the new design introduces a number of changes, primarily the addition of new functions. The building now houses two apartments for respite care on the second floor, as well as entirely new spaces for administration, senior care, meal distribution, rehabilitation, and therapy.

The building now operates as a cohesive whole – a social services home – fully integrated with the outdoor recreational spaces that are a key part of the overall design. The building's orientation, the perforations in the facade with windows and glazed walls, and its standalone form all meet the natural lighting requirements for the proposed functions.

Functionality Breakdown:

Basement: barrier-free entrance at ground level, staircase with elevator, spaces for dry rehabilitation, social therapy, accessible changing rooms and sanitary facilities, restrooms, exterior terrace, technical rooms (including space for heat pumps and cooling systems), storage,

cleaning staff room.

Ground Floor - Senior Day Centre: entrance at raised level, staircase with elevator, social room/meal distribution – dining area and supporting spaces including storage, staff changing rooms, and sanitary facilities for the catering team, social room, rest area, hygiene facilities for men and women, including accessible toilets for people with disabilities

Second Floor: staircase with elevator, two respite care apartments, administrative spaces with supporting facilities (kitchenettes, staff changing rooms, and sanitary facilities for office personnel), changing and hygiene rooms for other staff

Basic Summary Data

Plot area: 992m²

Floor area: 533 m²

Built-up area: 198,65m²

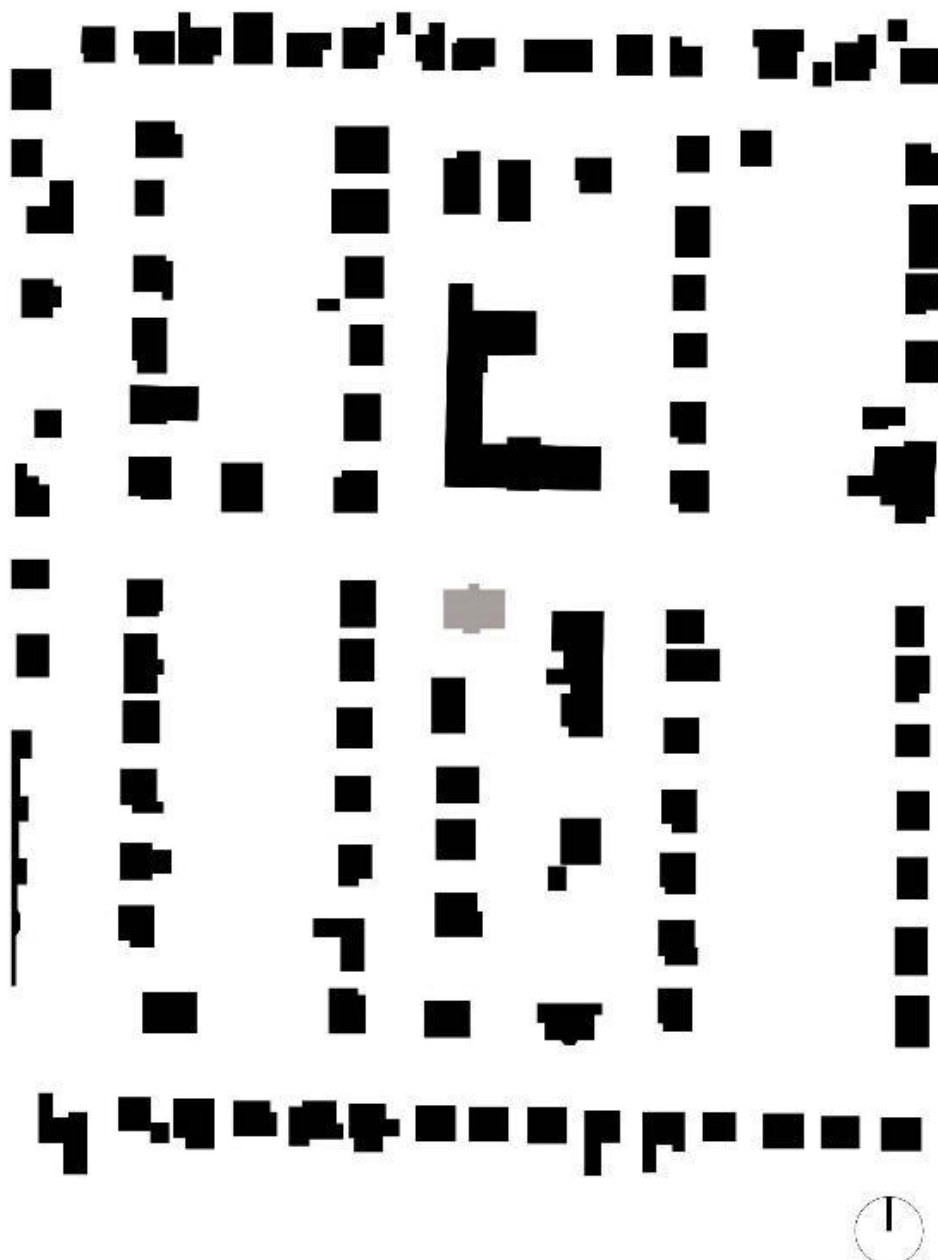
Net usable area: Basement: 156,77m² + 1st Floor: 146,96m² + 2nd Floor: 136,79m² = 440,52m²

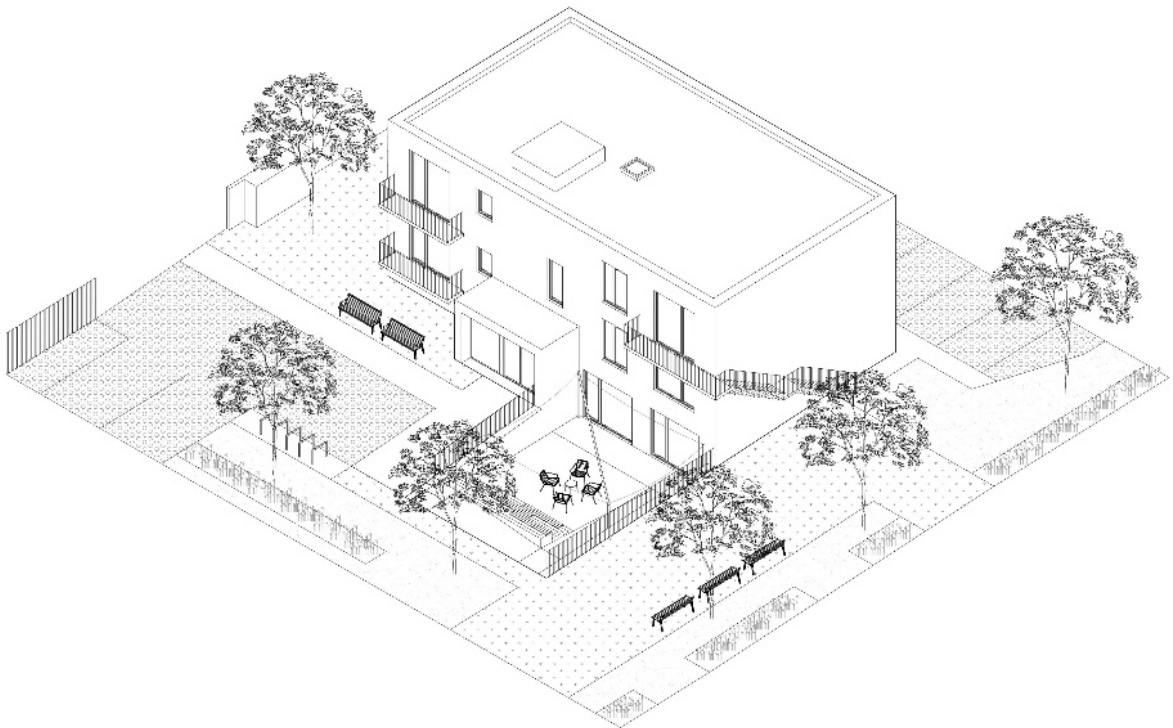
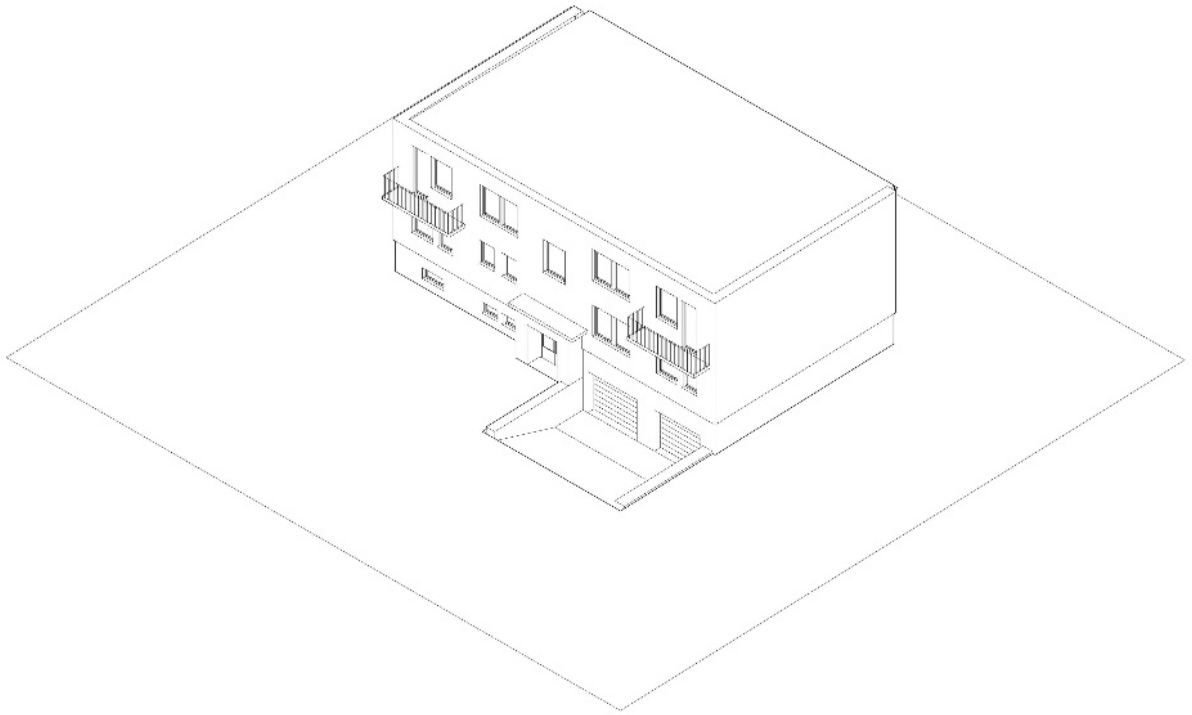
Built volume: 1499,89m³

Capacity data: temporary accommodation for 5 persons, offices for 2 persons, day care centre for pre 18 clients, 6 employees

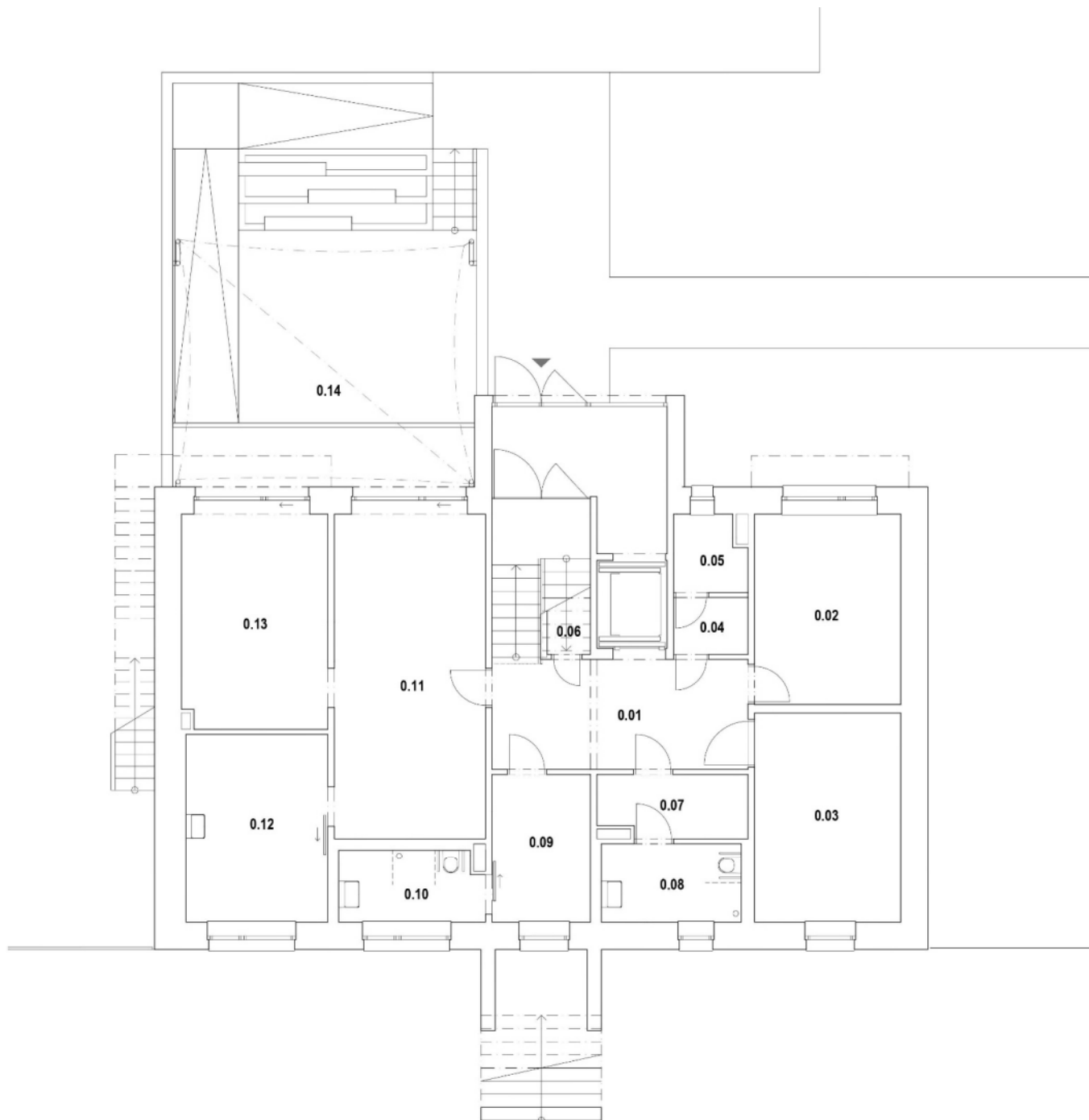
Construction costs: approximately 1,25 million Eur excluding VAT

Typical drawings



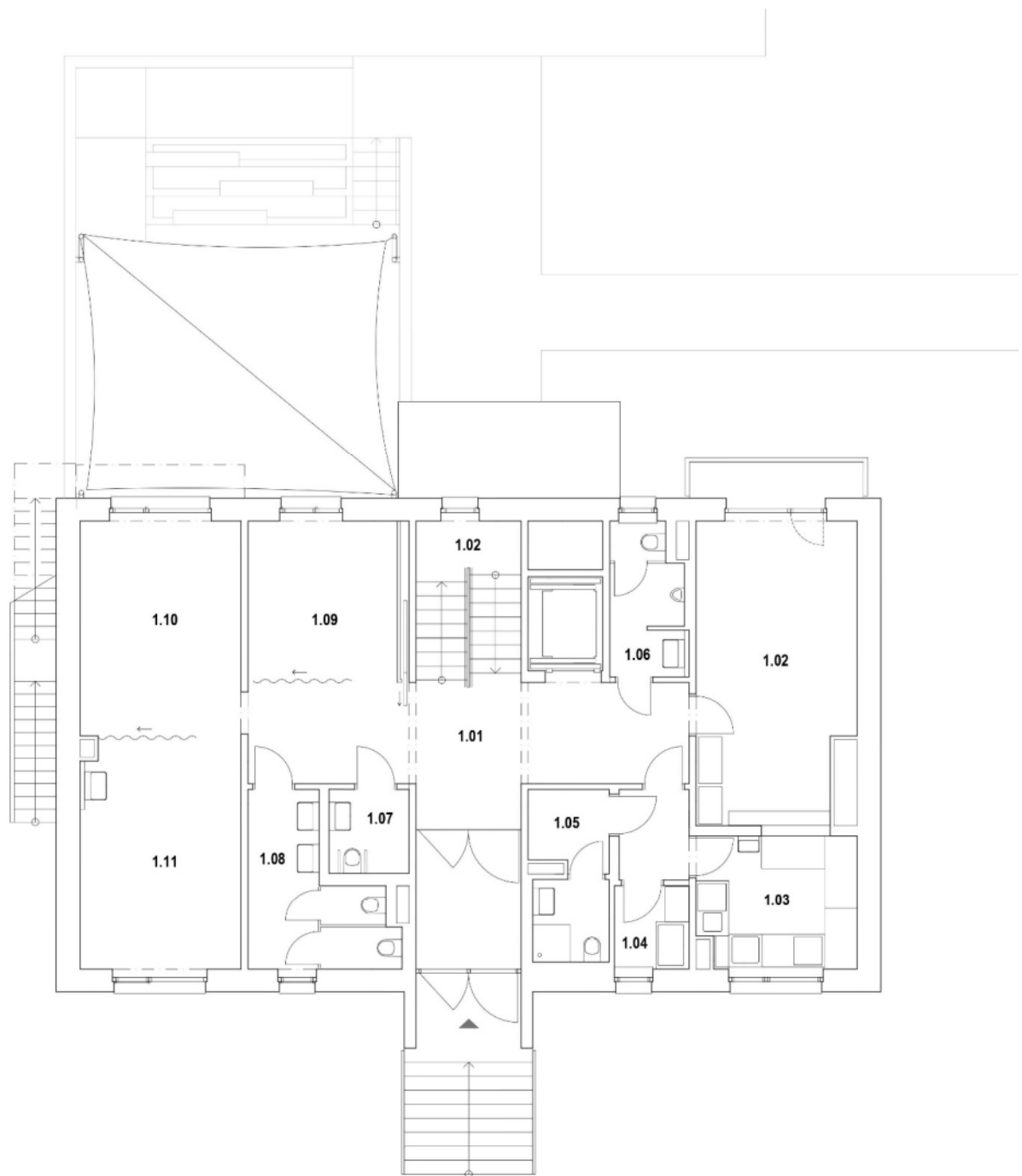


Floor plan of the 1st basement



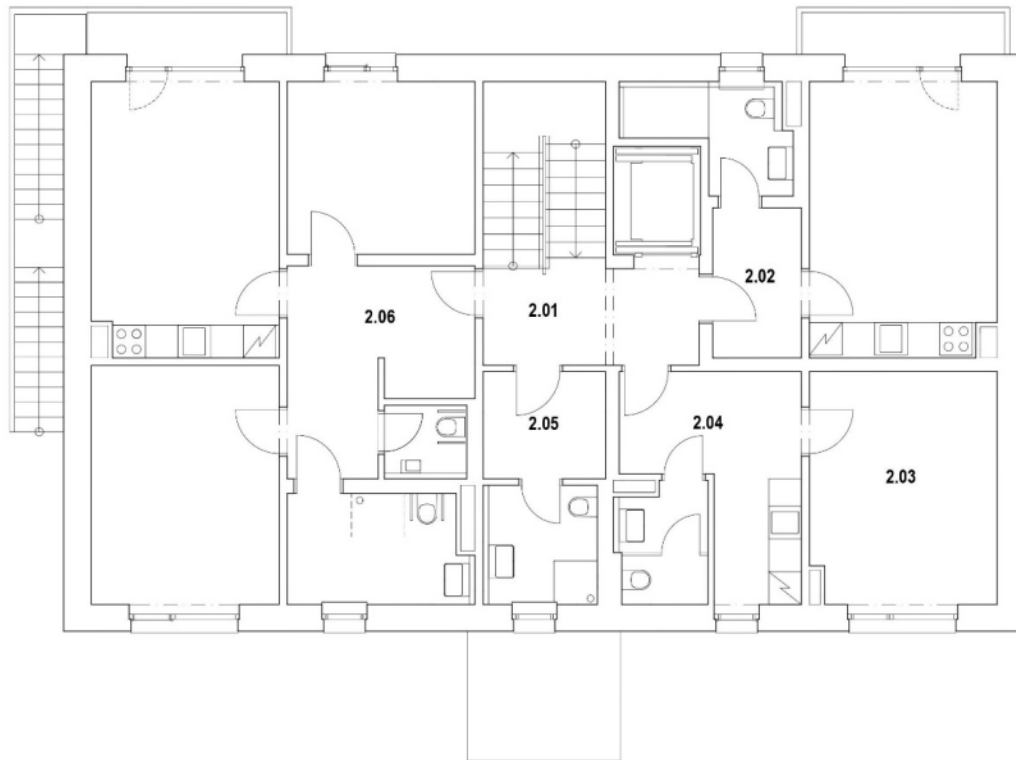
- | | | | |
|-------------------------------|----------------------------|----------------------------|----------------|
| 0.01 corridor | 0.05 technical room | 0.09 changing rooms W | 0.13 rest area |
| 0.02 dry rehabilitation | 0.06 cleaning staff room | 0.10 sanitary facilities W | 0.14 terrace |
| 0.03 technical room | 0.07 changing room for men | 0.11 rest area | |
| 0.04 storage / technical room | 0.08 sanitary facilities M | 0.12 social therapy | |

Floor plan of the 1st floor



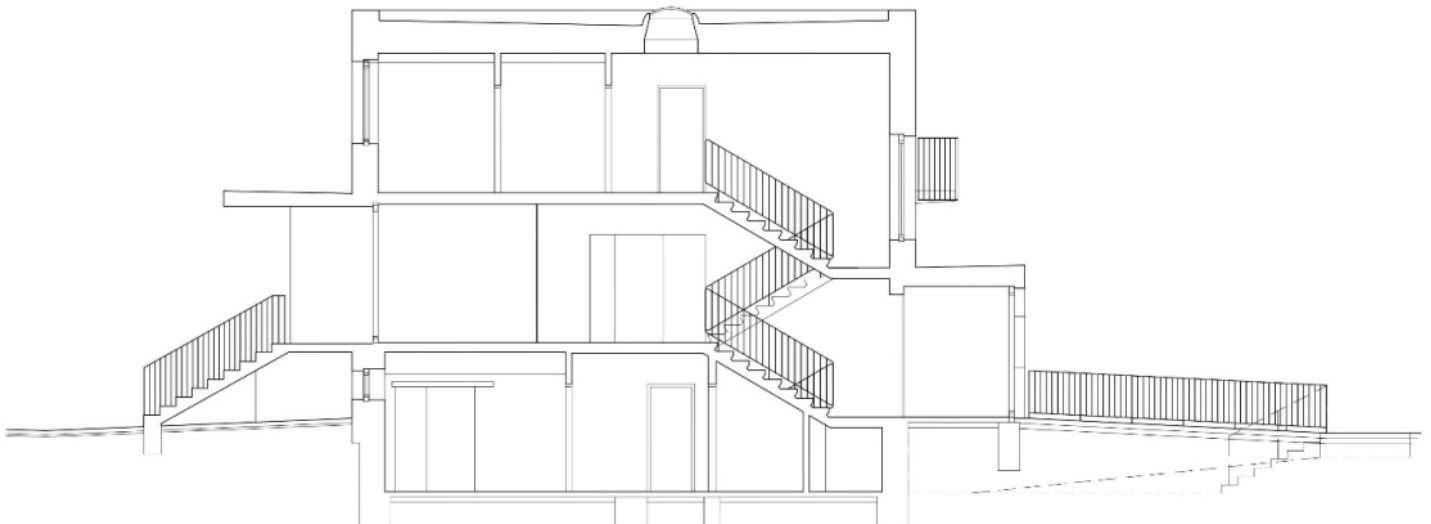
- | | | | | | |
|------|-------------------|------|-------------------------------|------|----------------|
| 1.01 | corridor | 1.05 | supporting spaces | 1.09 | rest area |
| 1.02 | dining area | 1.06 | hygiene facilities for men | 1.10 | activities I. |
| 1.03 | meal distribution | 1.07 | accessible hygiene facilities | 1.11 | activities II. |
| 1.04 | storage | 1.08 | hygiene for women | | |

Floor plan of the 2nd floor



- | | |
|-----------------------------|---|
| 2.01 corridor | 2.04 supporting facilities |
| 2.02 respite care apartment | 2.05 staff changing rooms and sanitary facilities |
| 2.03 administrative spaces | 2.06 respite care apartment |

Cross section





















**DENNÝ
STACIO
NĀR
NEZA
BUDKA**



VÝTAH













