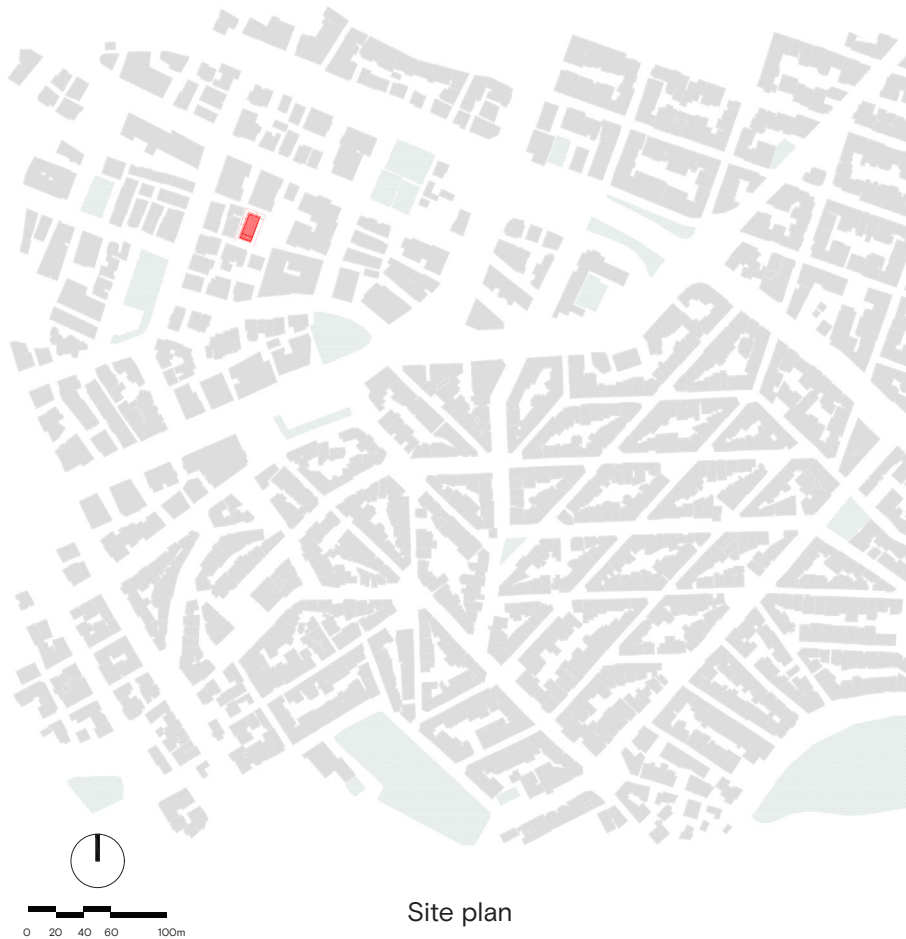




Nomads' Microresidencies

FUTURE PROJECTS  
RESTORATION & RE-USE



Site plan

## Project Overview

Nomads' Microresidencies is about the restoration and re-use of a 1970's building made to accommodate a small packaging enterprise. The project seeks to reimagine living for digital nomads within the city, to promote sustainable practices and create a sense of community among its residents.

The new building is one third communal areas and twenty-four fully equipped residential units, some of which have access to private gardens. The planning is based on the reproduction of three distinct typologies:

- Compact studios - 16 to 20 m<sup>2</sup>,
- Convertible studios - 22 to 26 m<sup>2</sup> and
- Studio apartments - 26 to 30 m<sup>2</sup>.

Furthermore, the articulation of each unit is based on a patchwork of standardized elements. The exterior shell is populated by planters, placed below each opening. As such, the project promotes the well-being effect of having a permanent view of greenery from the interior space of every unit.

## Project History

The building under restoration and re-use was zoned for industrial use, located on a quiet cul-de-sac of a bustling area, 5 kilometers from the city center. It consists of one underground floor, four more floors and a rooftop.

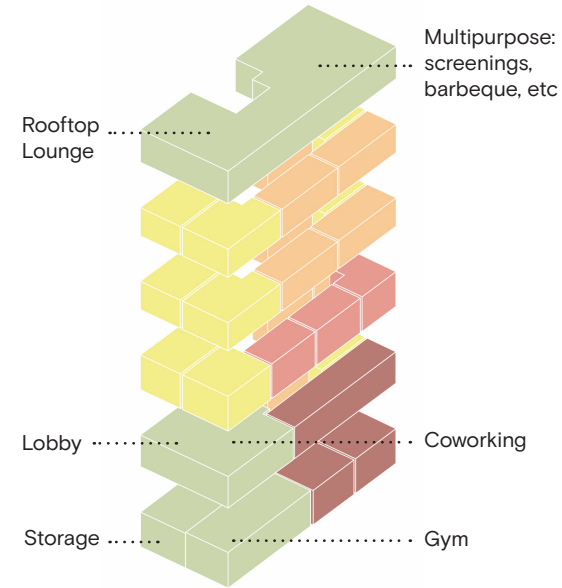
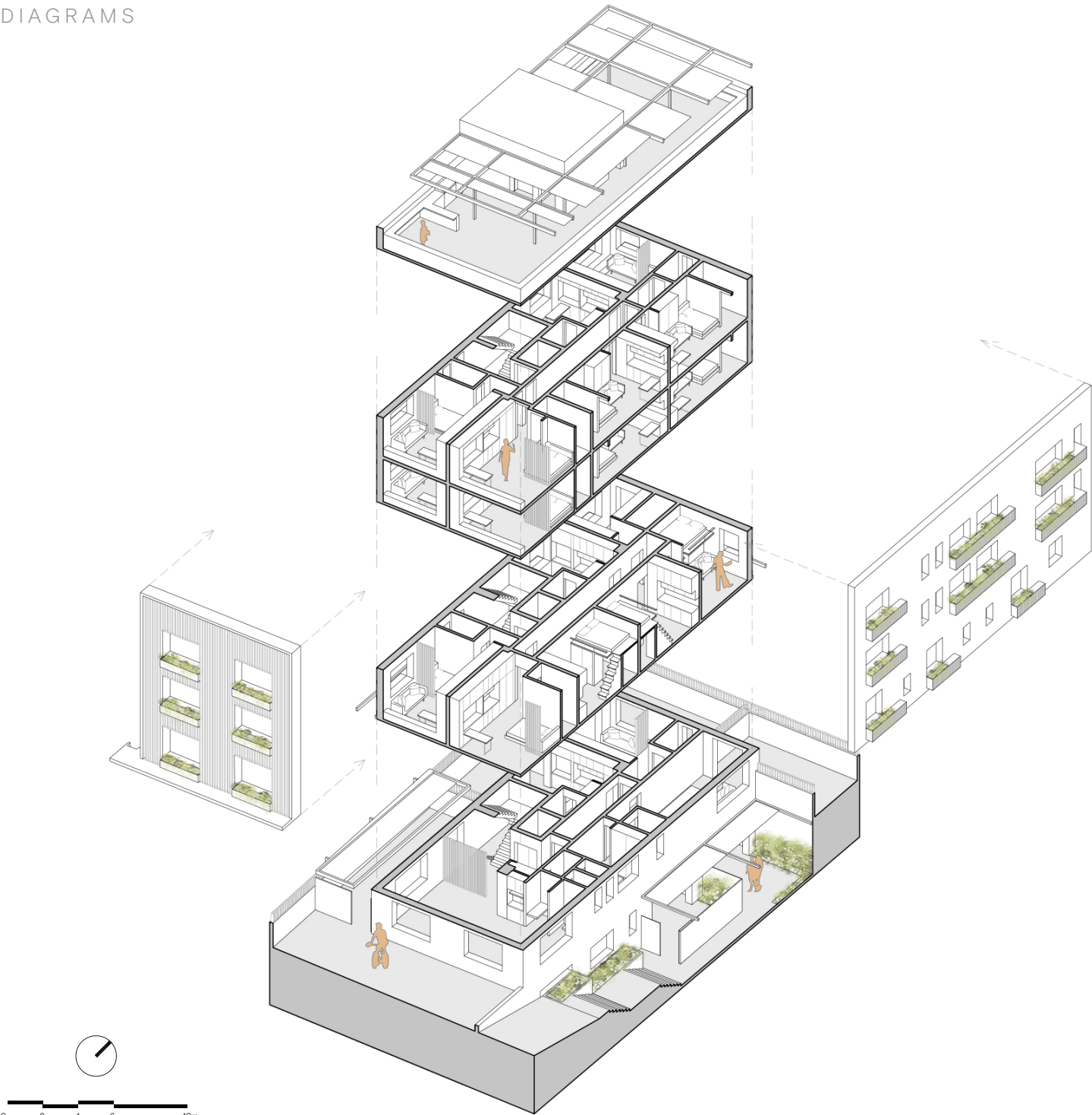
The variety of options for housing in the city is limited nowadays, as the demand for accommodation from young professionals from all over the world, students and tourists is on the rise. Our vision is to fulfill the housing needs of these diverse target groups seeking for quality living.





Original building

◀ Re-use: Project Nomads' Microresidencies



STRUCTURE	
Communal areas	Green
Studio apartments	Yellow
Convertible studios	Orange
Compact studios	Red
Studio apartments with a garden	Dark Red



ELEVATIONS



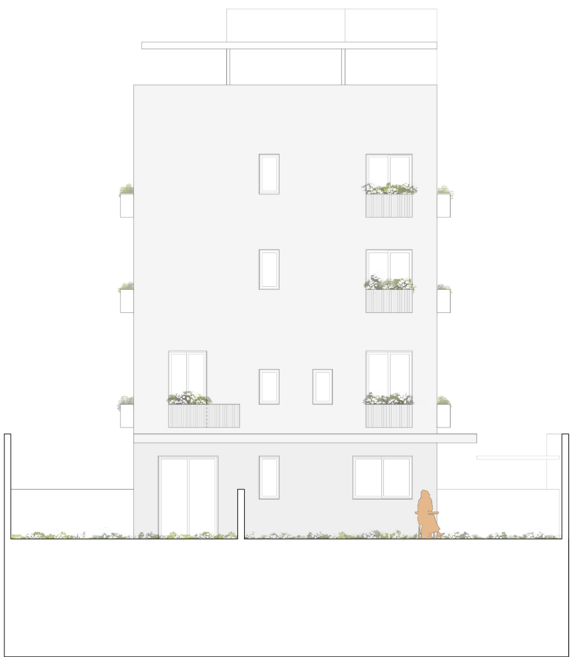
South FAÇADE



East

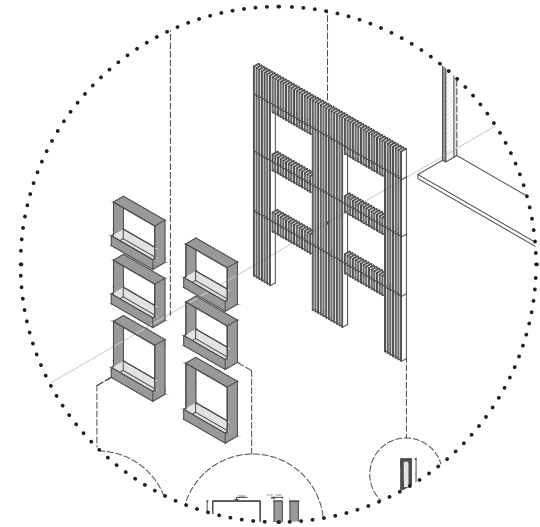


West

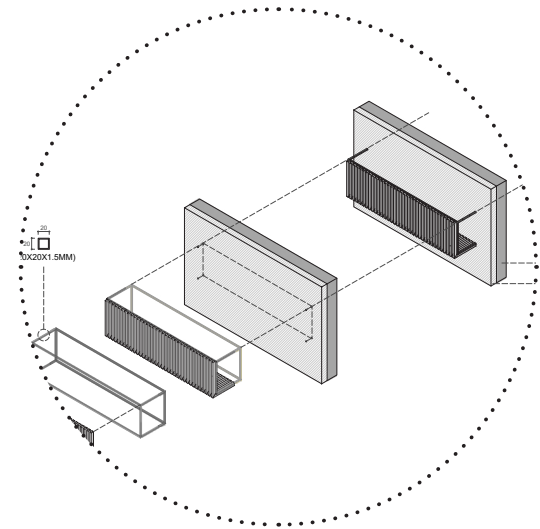


North





Metal frames for windows and planters on the façade

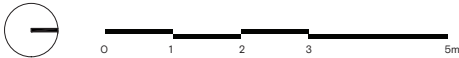


Installation of metal frames for planters on the other exterior walls





Sections of private units and communal areas on the East elevation

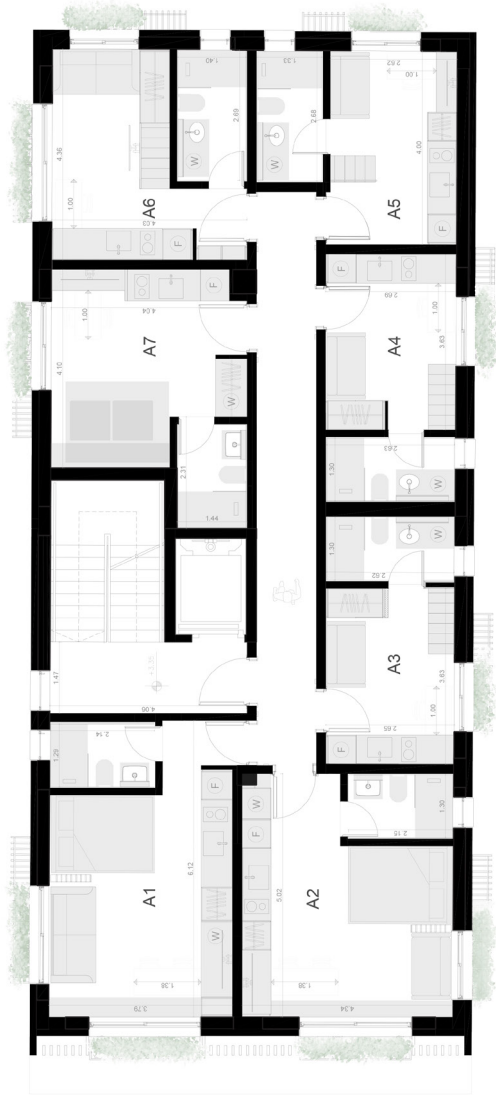


Architectural floor plan of a two-story building. The plan shows two main units, U1 and U2, each with a living area, dining area, kitchen, and bedroom. Unit U1 has a living area of 4.85, dining area of 4.82, kitchen of 4.82, and bedroom of 4.82. Unit U2 has a living area of 4.85, dining area of 4.82, kitchen of 4.82, and bedroom of 4.82. The plan also includes a central staircase, a large common area with a bar and seating, and a parking area with 10 spaces. Dimensions are provided for various rooms and areas.

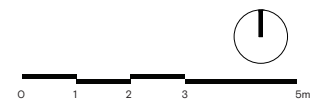
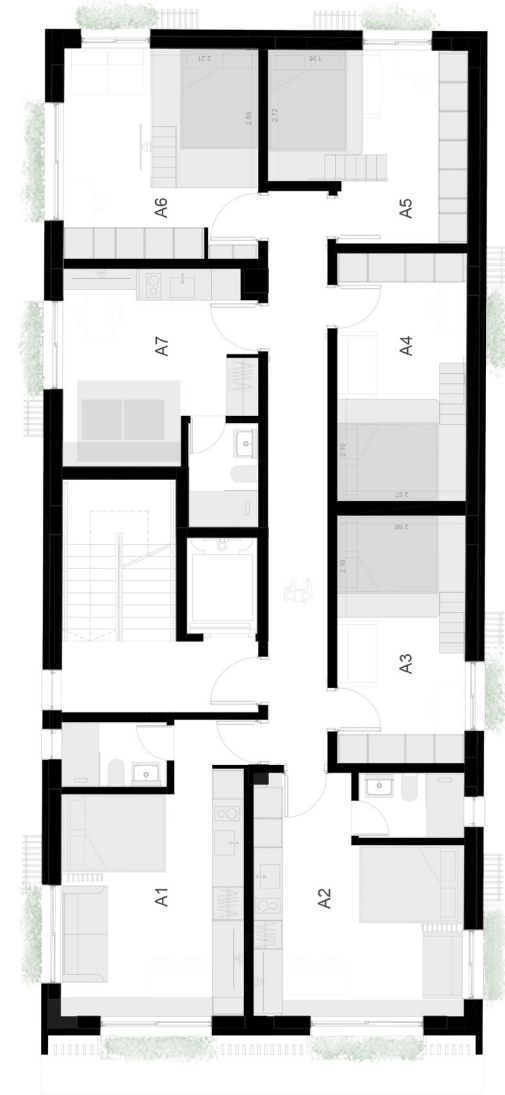
A horizontal number line is shown, labeled from 0 to 5m. There are tick marks at 0, 1, 2, 3, and 5m. Above the number line, there is a clock face with a single vertical line pointing to the 12 o'clock position.

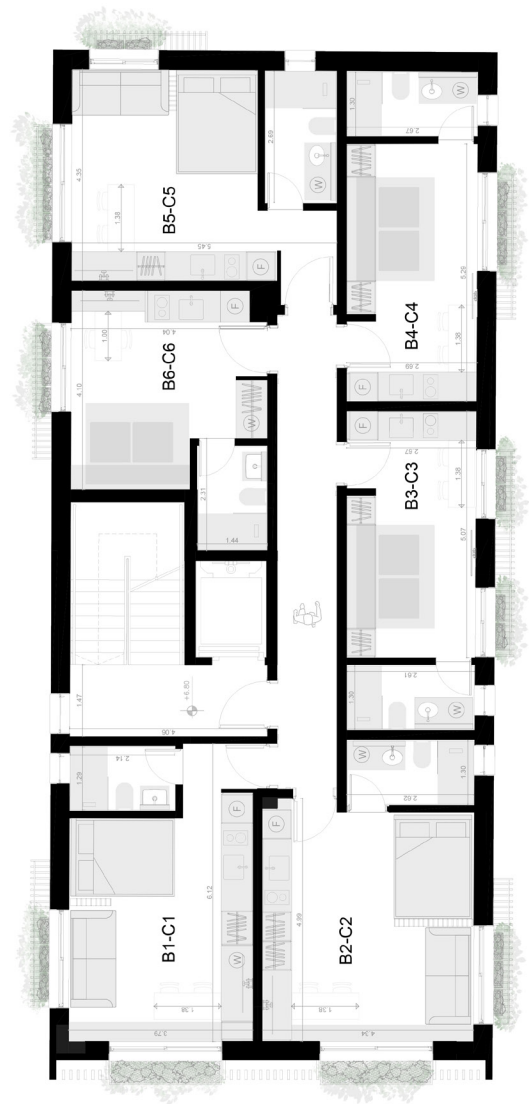


## First Floor

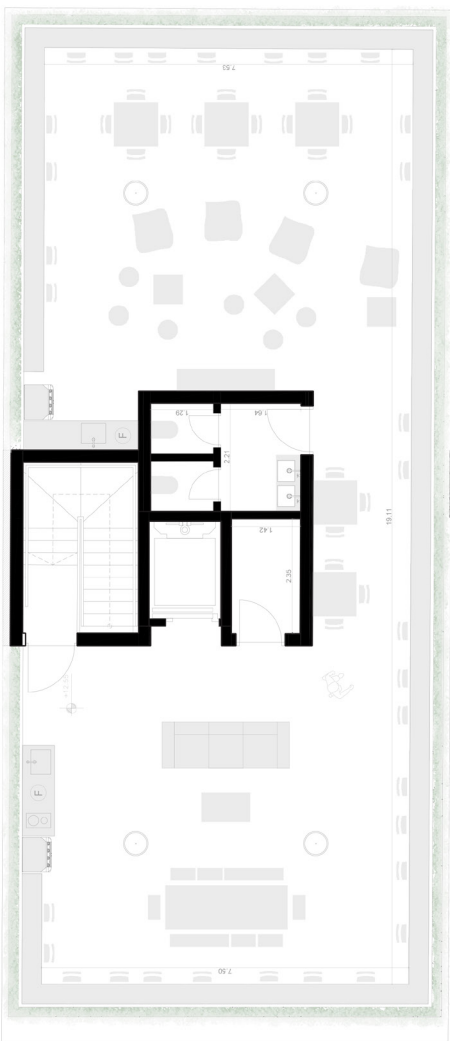


First Floor: mezzanines

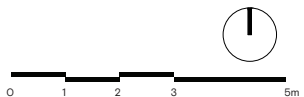




Second & Third Floor

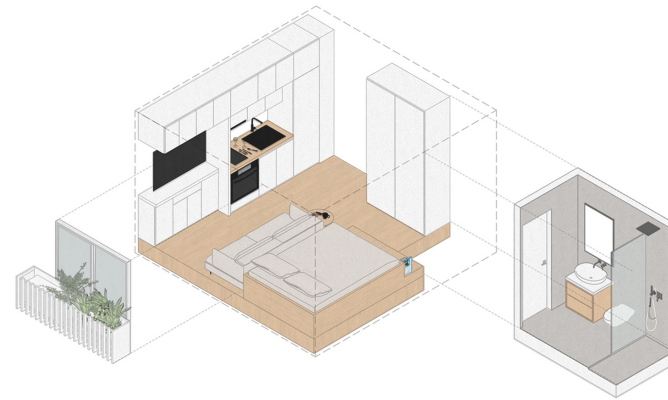


Rooftop

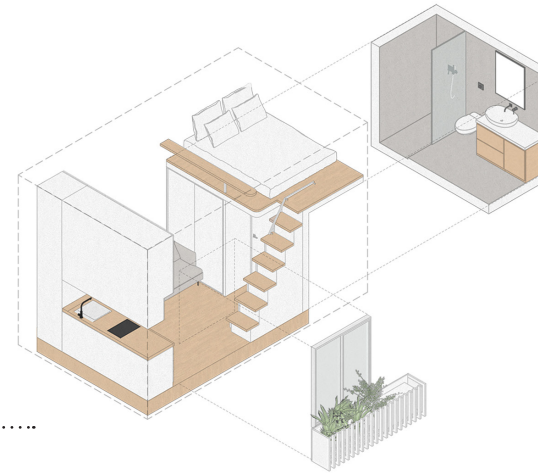




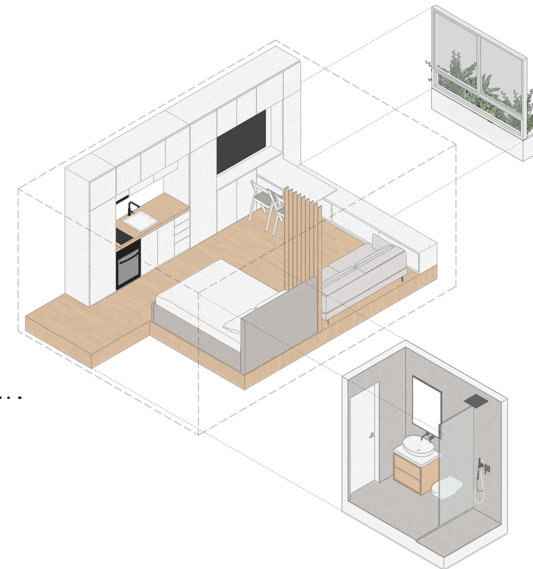
from standardised elements.



Convertible studio  
22 ... 26m<sup>2</sup>



Compact studio  
16 ... 20m<sup>2</sup>



Studio apartment  
26 ... 30m<sup>2</sup>







Convertible studio with murphy bed





Convertible studio with murphy bed



Compact studio





Groundfloor: Lobby and coworking area with isolating booths





Rooftop: Multi-purpose communal area





Rooftop: Multipurpose communal area



Nomads' Microresidencies

FUTURE PROJECTS

RESTORATION & RE-USE