



# PCCW GLOBAL HEADQUARTERS

CHALANDRI, ATTICA, GREECE

## a few words about the project..

The PCCW Global offices in Athens were designed to accommodate 80 employees across 17 private office spaces, three meeting rooms, a reception area, and auxiliary facilities. The design approach is based on four key principles: **functional organization**, **natural light circulation**, **balanced privacy**, and the **integration of natural elements**.

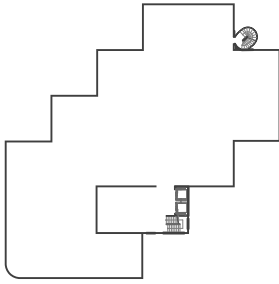
To optimize movement, the layout minimizes internal circulation, preventing congestion and ensuring a **fluid workspace**. Natural light from perimeter windows permeates the interior, creating an open and **breathable environment**. Privacy is maintained while preserving **visual connections**, allowing users to navigate the space intuitively. Additionally, the incorporation of **micro-landscapes** enhances well-being and introduces a sense of calm.

The architectural concept deconstructs traditional office partitions, replacing them with clusters of **petal-like structures** linked by glass elements. These organic forms create smooth transitions between spaces, avoiding the rigid and sharp edges of conventional office layouts. The petal formations generate **negative spaces -recesses**, marked by distinct flooring and ceiling materials, where glass partitions and doors are seamlessly integrated.

Among these sculptural partitions, ten **“pocket gardens”** are interwoven within the design, enclosed in glass. These micro-landscapes establish a dynamic interplay between nature and workspace, filtering views through ribbed glass that produces subtle light reflections. Materiality plays a crucial role in reinforcing the design vision. The petal partitions are finished in white or **wide-grain oak veneer**, creating a rhythmic progression through the space. The corridor's **white seamless polyurethane flooring** enhances fluidity, while **stainless steel** ceiling accents add depth and reflection. **Rosso Alicante marble** marks the thresholds between common and private spaces.

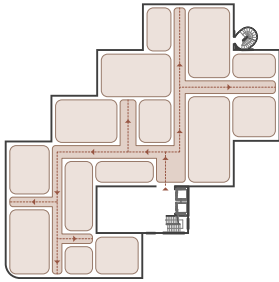
Glass is used selectively to balance transparency and warmth, while soft, **atmospheric lighting** fosters visual comfort and mental relaxation, avoiding overstimulation in the modern workspace.

All furniture are custom and made to order to match with the space aesthetic and style.



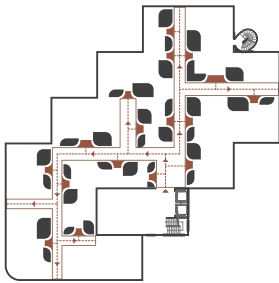
### 01 Existing shell

The existing space is a large open area with its entrance leading approximately to the heart of the space. The new design will accommodate 80 employees across 17 private office spaces, three meeting rooms, a reception area, and auxiliary facilities.



### 02 Circulation & Clusters

The spatial layout creates a continuous circulation axis that starts at the entrance and extends toward the surrounding work clusters. Such a design allows for a functional distribution of the space as well as reserves the peripheral areas for working spaces.



### 03 Threshold design

The partition walls between corridor and office spaces are reimagined as clusters of petals, creating smooth and choreographed transitions between spaces. These petals highlight the entrance to each space as the 'threshold' is defined by their architectural form and a dynamic interplay of materials.





