

'Kurrizi' as an architectural entity, but also as a cultural artifact, embodies meaningful memories of **collective resistance** and the hope for freedom that characterized the cultural consciousness of Albanians in Kosovo during the escalation of Serbian oppression in the 1990s. It served as a meeting point for young men and women who, in the face of the repressive policies of the Serbian regime in Yugoslavia, carried their social lives into the margins permitted by urban life—specifically, **into the underground**.

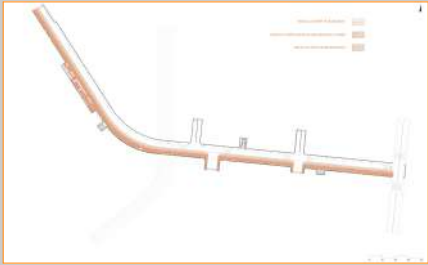
The structural characteristics of Kurrizi enabled an experience of 'shelter' which, although not fortified in any physical sense, nonetheless created a sense of restrained freedom within the walls of the various establishments that populated the space. This aspect has inspired the design concept—from the selection of materials and the conservation of specific parts of the existing structure, to the modularity of design elements—reflecting the improvisational nature of life during that time.

Three decades later, this place has reemerged as a point of reference—culturally and artistically, as well as politically and historically. Through this project proposal, we hope to activate various elements of collective memory that would reanimate this space under conditions of freedom: paying respect to a historical experience that still lives in the memory of past generations, while simultaneously offering a new, active space suitable for the younger generations who will traverse the Kurrizi tunnel. The revival of this collective narrative marks the beginning of a new chapter—one that opens the way for creative ideas and diverse artistic concepts to inhabit the tunnel in continuity, offering a dynamic, modular space for social and cultural activities in our capital city.

Throughout the tunnel of Kurrizi, our project proposal aims to preserve the material character of the former Kurrizi and to revive the youthful spirit of the present day by adapting to the current time. By preserving various elements of the original structure and evoking fragments of history through the material nature of the infrastructure, the new Kurrizi will pave the way for a vibrant new narrative.

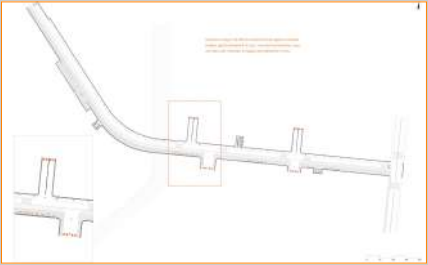
Throughout the Kurrizi tunnel, a variety of events will be organized, such as: concerts and festivals, fashion shows, and scheduled fairs. Through the modularity of the tunnel's façades, temporary market stalls will be created, allowing vendors to open and display their products during the day and close them afterward. The façade surfaces will also serve as rotating exhibition panels for showcasing artworks by both local and international artists.

Below is a schematic representation of the tunnel's spatial use according to the events mentioned above.



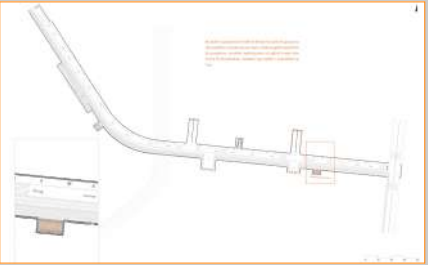
Circulation

On regular days, Kurrizi will be used primarily for circulation, through a designated pathway for pedestrians, cyclists, and people with disabilities. As for vehicles, they will be allowed to move in only one direction, in order to prioritize pedestrian access.



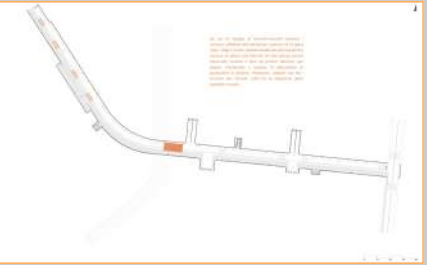
Market Modules

On regular days, the market modules are integrated into the facade. During their use, the modules are operated manually, allowing individuals to control how they open and determine their specific function.



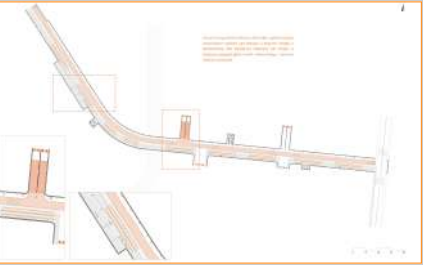
Fair Modules

On regular days, the fair modules are stored in a designated depot area. During fair events, the modules are distributed throughout the tunnel and can be utilized according to the specific purpose of each event.



Scenario 1 | Concerts and Festivals

In the case of a festival or concert, vehicle circulation is suspended, and barriers at all tunnel entrances and exits are activated. The designated stage area is mounted on the ceiling and lowered to the ground via a pneumatic system. Additional modules, also lowered from the ceiling, are used as shared gathering spaces for the audience. Depending on the type of concert or festival, the entire tunnel space is available for the artist's use.



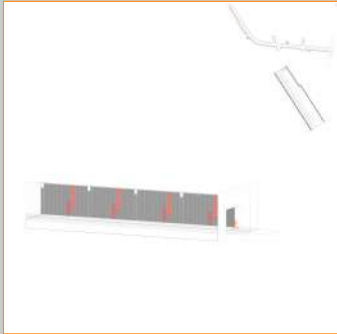
Scenario 2 | Fashion Shows

In the case of fashion show, the entire space is adapted based on the specific requirements of the designer. The pedestrian and bicycle lanes are used for placing seating along the length of the tunnel, while the vehicle lane serves as the runway.



Homage to the 90's

This area, located at the tunnel entrance near the existing clock, will be dedicated to commemorating the history of Kurrizi, featuring the names of various venues that were active during that time. The existing non-functional doors will be painted, and a metal mesh will be installed over the entire wall. On this mesh, metal plates bearing the names of all the former venues will be mounted. The mesh in this area-and wherever it is installed throughout the tunnel-provides modularity for renewal. In addition to permanent elements, it enables the easy installation of other structures as needed for different events. The selection of materials is based on those originally used in the construction of the doors of the Kurrizi venues.



Mirror Wall | Pristina in the 90's

In this area, to create a connection between the past and the present, reflective polycarbonate panels will be installed along the wall. These panels will be rotatable around a vertical axis, revealing on their reverse side images of old Prishtina. Through this permanent installation, the audience will be confronted with the reflection of the present as intimately connected to a not-so-distant past-presented as its second face. The photographs behind the mirrors will, of course, be replaceable, allowing for the future display of concepts by various artists who may submit design and photography proposals.



STATIC BAR

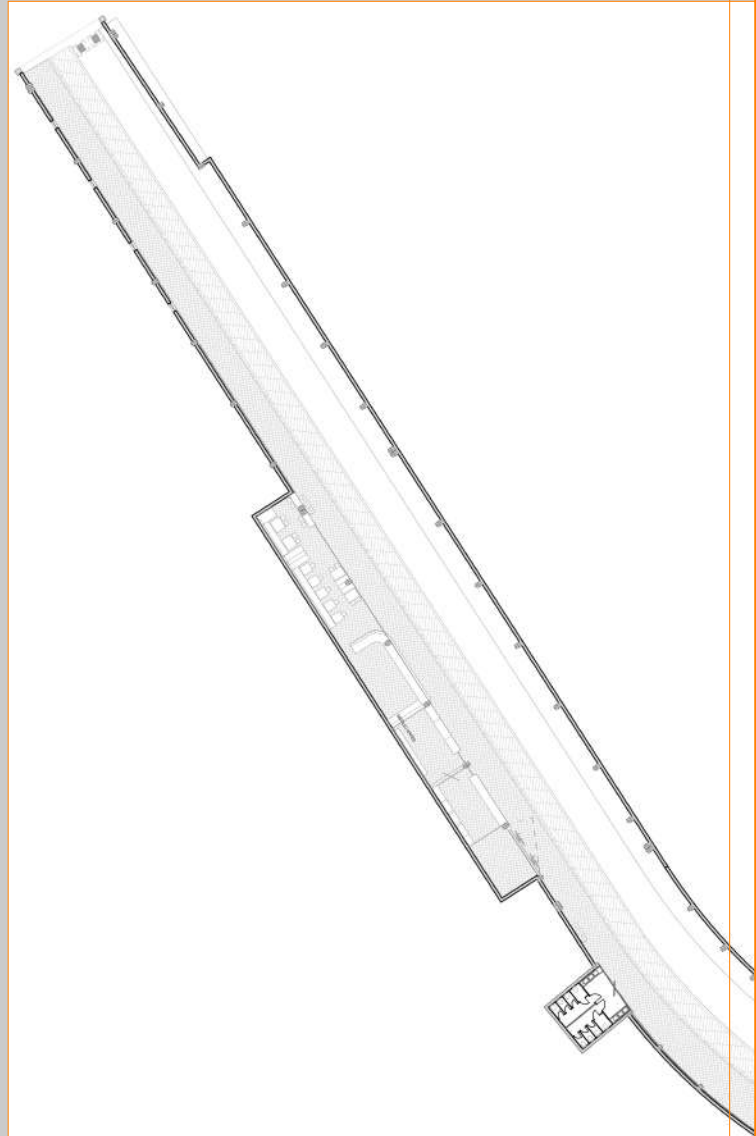
In the niche located in this area, static structures will be built to function as a shop and café bar. These will be accessible to the public, allowing citizens to freely navigate between the two spaces. The bar counter structure will consist of a metal mesh frame with polycarbonate surfaces and will be separated by a sliding door.

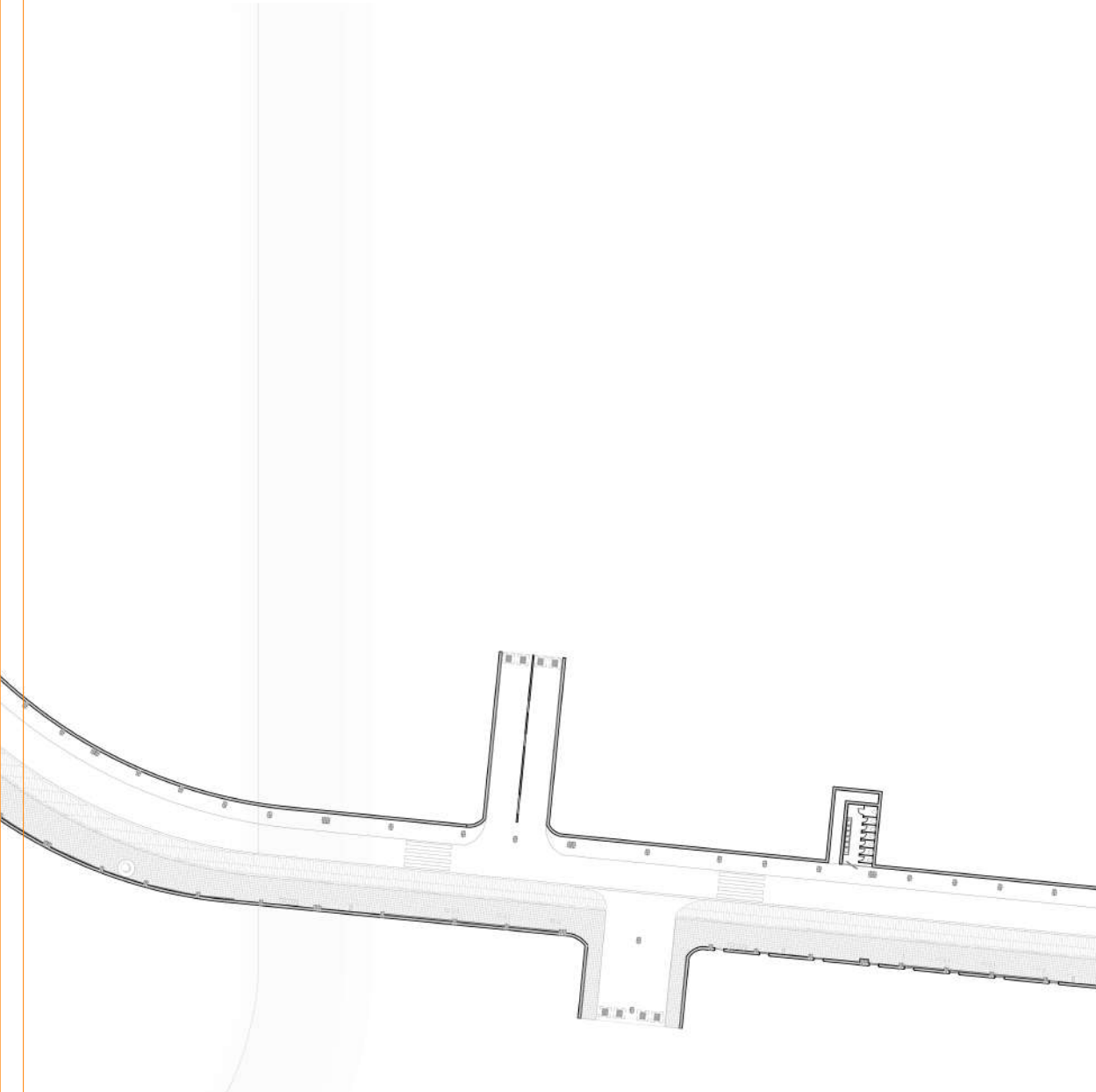
Alongside the bar structure, existing but currently non-functional ventilation pipes will be integrated, contributing to the upcycling of neglected materials that carry the aesthetic identity of the era.

On the right side, metal seating will be installed, functioning as independent resting areas, detached from the shop and café, and open to all pedestrians and passersby.

During events-when the tunnel's function is entirely dedicated to a specific occasion-these areas can be easily repurposed for appropriate use.

All elements are original designs, created to respond to the spatial context and its specific functional needs.





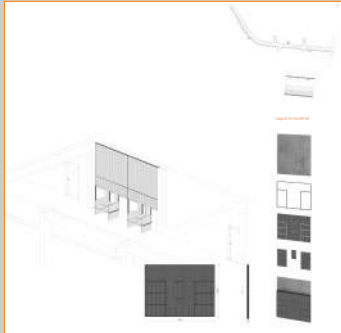
INTERACTIVE WALL

This zone is dedicated to a permanent installation—an interactive wall—that will activate the curved section of the tunnel. In this area, screens will be installed that receive input from a camera. As pedestrians pass in front of the camera, their shadows are transformed into silhouettes. Simultaneously, the screen will project sequential footage displaying contextual elements from events of the 1990s, through silhouettes representing key figures of that era. For example, at certain intervals—based on the frequency of police raids—visual elements depicting police persecution will be displayed. At other intervals, youth will be shown in their imagined, sheltered utopias, and so on.



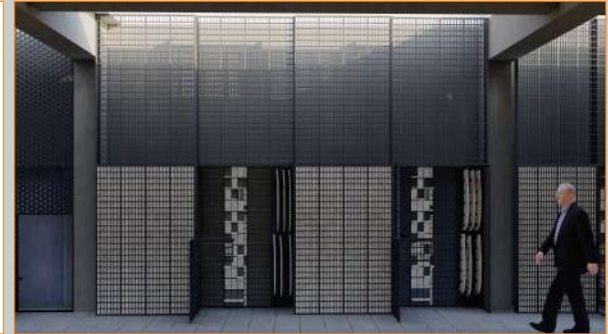
MODULAR STAGE

The movable or modular stage will serve as a key element for organizing fairs, conferences, and concerts. This stage, which will descend from the platform of the tunnel, will be equipped with a movable mechanism built with a pneumatic system, ensuring that all movement is synchronized and supported by a system of safety and stability sensors. This is designed to prevent potential incidents during the stage's descent from the platform. The stage will be constructed in two parts or modules, which will then be secured together to form a complete functional unit.



Modular Seating

The seating units are modular elements that can be opened and closed based on usage by passersby. This module is conceived with the intention that Kurrizi is not merely a transit corridor, but a space where people can pause and inhabit it as a public place. The structure of the seating consists of a fixed component mounted to the walls, while the interior houses modules that unfold to form both the seat and table. The structure is constructed from a metal mesh framework.



The markets are static structures, but they incorporate modular elements to allow for diverse uses by vendors. The market structure consists of a fixed component mounted to the walls, while the interior houses modules designed for product display. The front panels can open on both sides, forming a fully functional counter. Beyond their commercial function, the market structures will also serve an aesthetic purpose. Between the two mesh frames on the front, a metal surface will be installed, enabling the display of various works by local artists in a gallery-like format. The structure is built from a metal mesh framework.

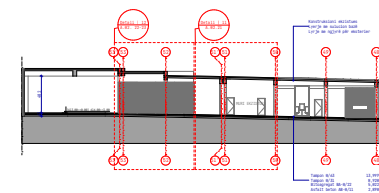


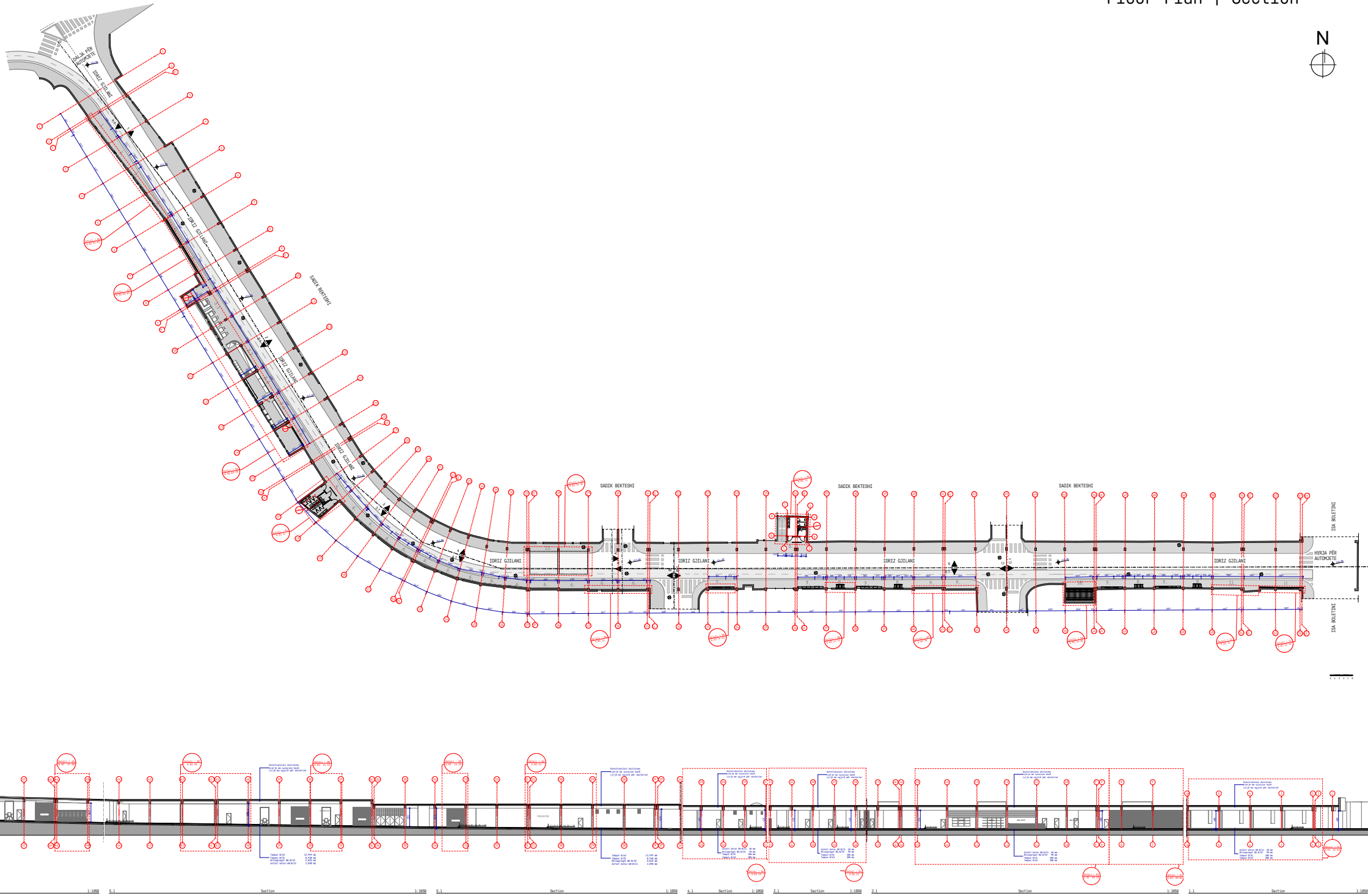
The fair modules are movable elements that will be stored in a designated depot space identified by our designers during on-site visits. The product dimensions are optimized to accommodate 21 fair modules within the identified storage area. The structure is built from metal and can be unfolded to create a total of 42 fair stands. The modular kiosk system is designed to meet the diverse needs of businesses, offering different types of modular display formats that, based on our designs, provide full flexibility for vendors to easily adapt and customize their fair stand as desired. The stands are user-friendly, space-efficient, and allow for a professional presentation to clients. Users will have direct access to electrical supply for product display, as well as space for brand signage and physical marketing materials.



As a new meeting point, the "New Clock" will carry the legacy of time through its structure by reusing the glass material that was originally used during that period. The existing concrete (both here and throughout the entire tunnel) will be preserved to maintain its aesthetic character and to evoke, through the materiality of the structure, the history of the past.

Above the concrete in this zone, a wall made of glass blocks and metal mesh will be installed. At specific coordinates behind the glass, a digital lighting system will display the current time-accurately, in real time, and continuously.







Ongoing Project-Infrastructural and Artistic Renovation of the Kurrizi Tunnel

The photographs show the construction process according to the project we have proposed.











"...now it is no longer about the 'light at the end of the tunnel,' but the light is within the tunnel itself."