

KÜBEKHÁZA (HU) - RABE (SRB)
BORDER CROSSING POINT



KÜBEKHÁZA (HU) - RABE (SRB) BORDER CROSSING POINT

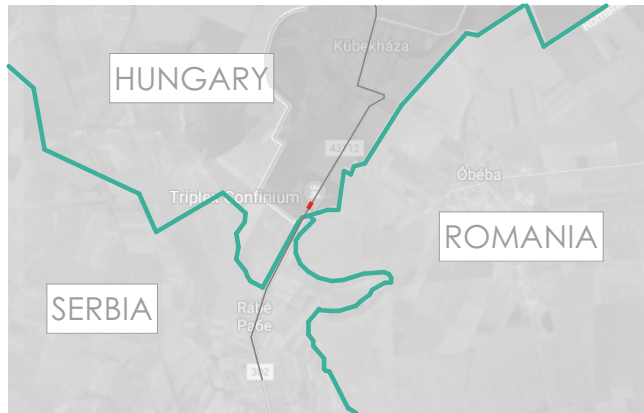
PROJEKT OVERVIEW

The facility is located on the border between Hungary and Serbia and provides a modern crossing point for passenger, cyclist and car traffic crossing the border.

In its appearance, the building complex is a harmonious work of art, respectful of the Carpathian Basin traditions, bearing the traits of Hungarian design, but at the same time modern in appearance. The form of the roof evokes the motif of the triple mound, the symbolism of which in this case refers to the triple border and , with it, the three nationalities.



KÜBEKHÁZA (HU) - RABE (SRB) BORDER CROSSING POINT



The site of the planned building was previously occupied by a temporary border crossing, which was to be replaced by a modern border crossing point without utility connections.

Kübekháza is located on a triple border linking Hungary, Serbia and Romania, only the road to Romania has not yet been completed.

The fenced area of the site is 16,000 m², comprising a 450 m² office building and a 945 m² primary inspection site under a canopy with several smaller service buildings.



KÜBEKHÁZA (HU) - RABE (SRB) BORDER CROSSING POINT

PROJECT HISTORY

The canopy has been placed on the axis of the routes as a defining architectural element that also functions as a gateway to the country. The associated office building and the smaller service buildings match it in form and decoration.

For future development and redevelopment, the building was constructed from CLT panel containers, providing the opportunity to reuse the building should the office function at the crossing no longer be required in the future, or if the border crossing point is extended to Romania.



KÜBEKHÁZA (HU) - RABE (SRB) BORDER CROSSING POINT

PROJECT HISTORY

The border crossing point can operate independently without external utilities. The water supply comes from a borehole, it has its own sewage collection and treatment system, and electricity is provided by a solar panel park.



KÜBEKHÁZA (HU) - RABE (SRB) BORDER CROSSING POINT

PROJECT HISTORY

The building is dominated by white metal, natural wood and glass. The aim was to create a piece of architecture that would convey a positive message to people crossing the border, contributing to a positive image of the country.

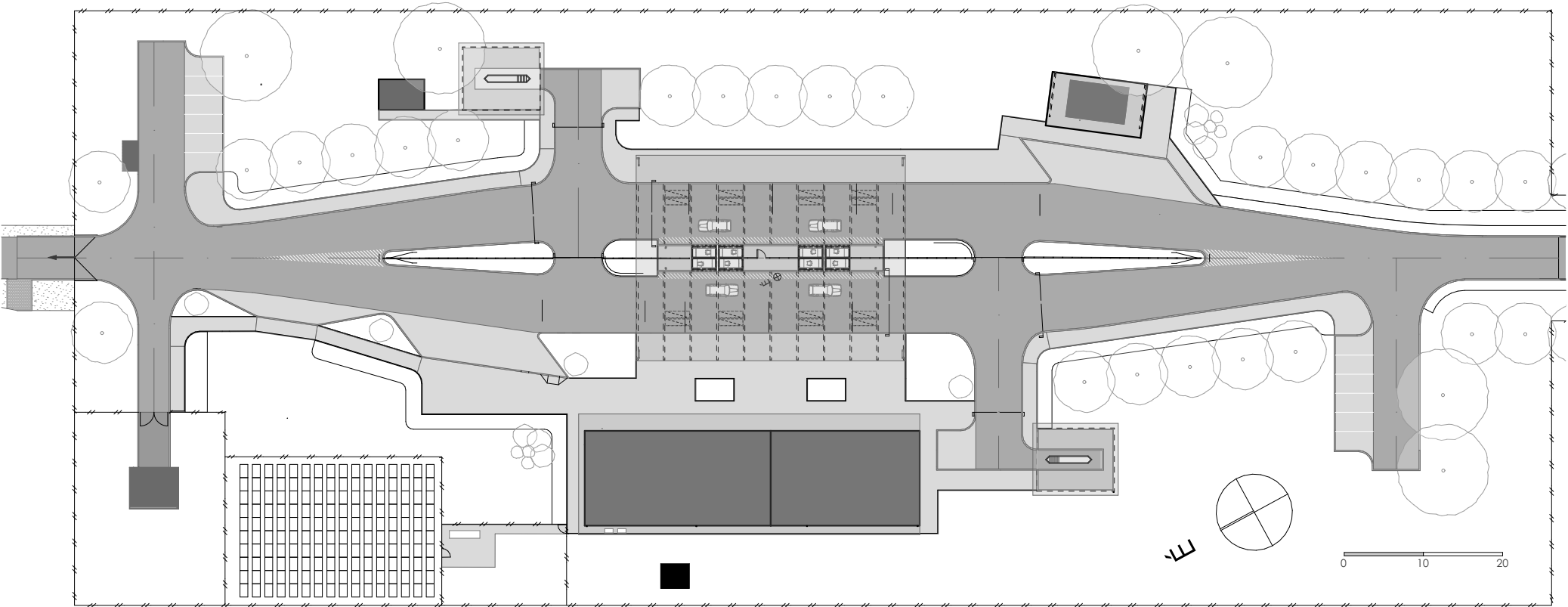
The wooden patterns are inspired by folk architecture, with motifs of corn cribs, wheatears and sunbeams.

Construction started in late 2022 and was completed in 2024, and it is now in use.



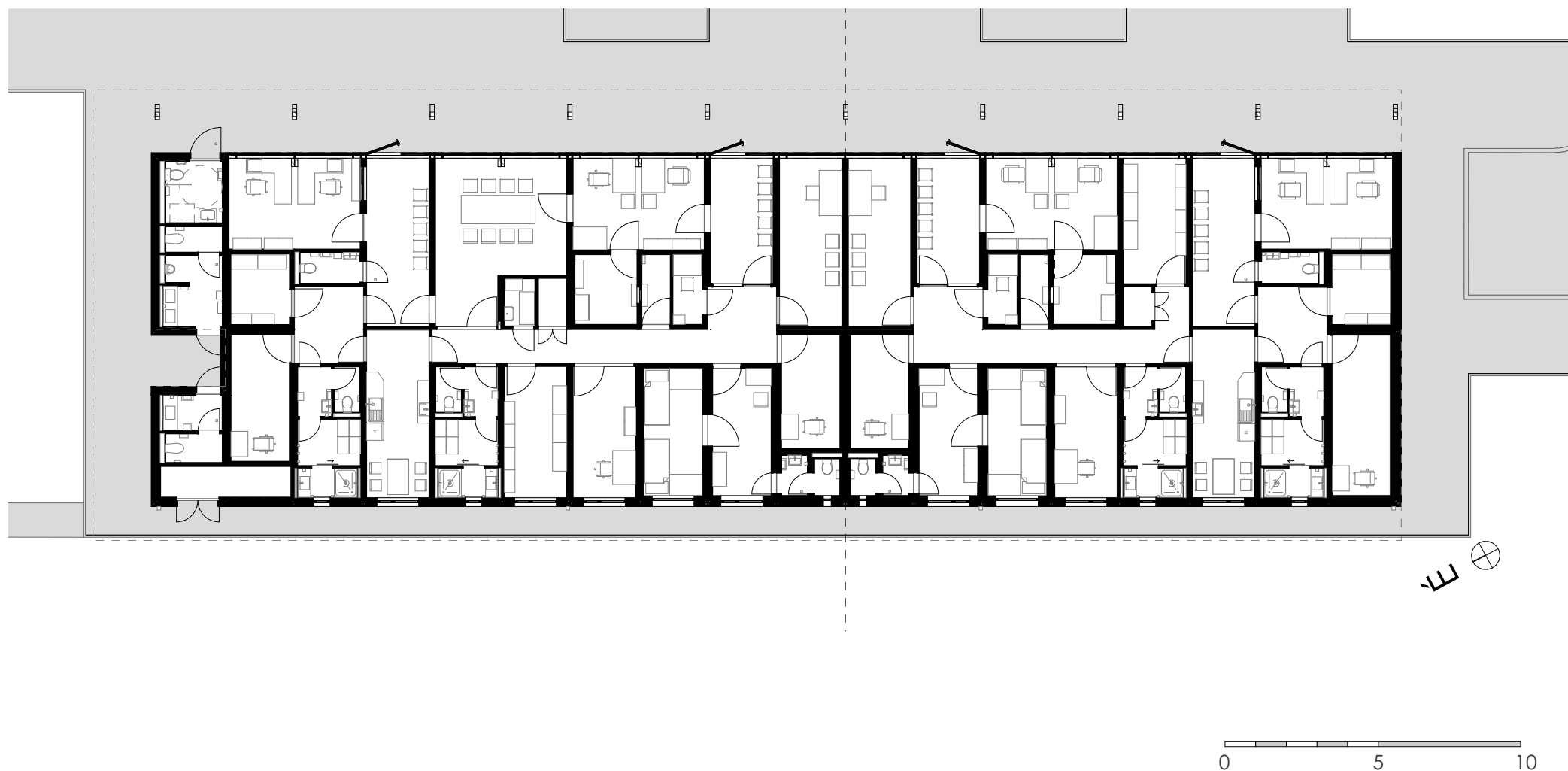
KÜBEKHÁZA (HU) - RABE (SRB)
BORDER CROSSING POINT

SITE PLAN



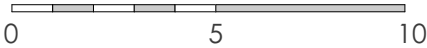
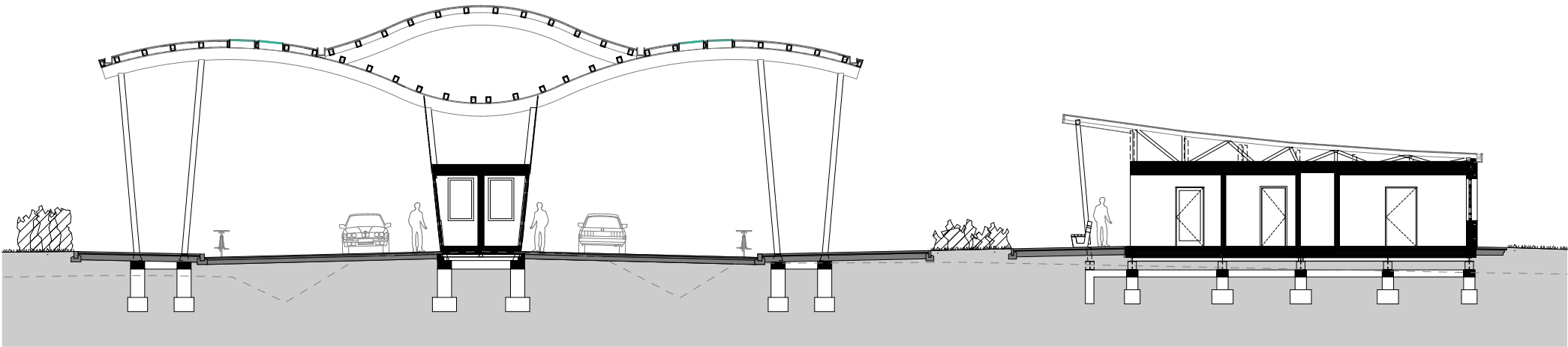
KÜBEKHÁZA (HU) - RABE (SRB)
BORDER CROSSING POINT

FLOOR PLAN OF THE MAIN BUILDING



KÜBEKHÁZA (HU) - RABE (SRB)
BORDER CROSSING POINT

SECTION



KÜBEKHÁZA (HU) - RABE (SRB)
BORDER CROSSING POINT

