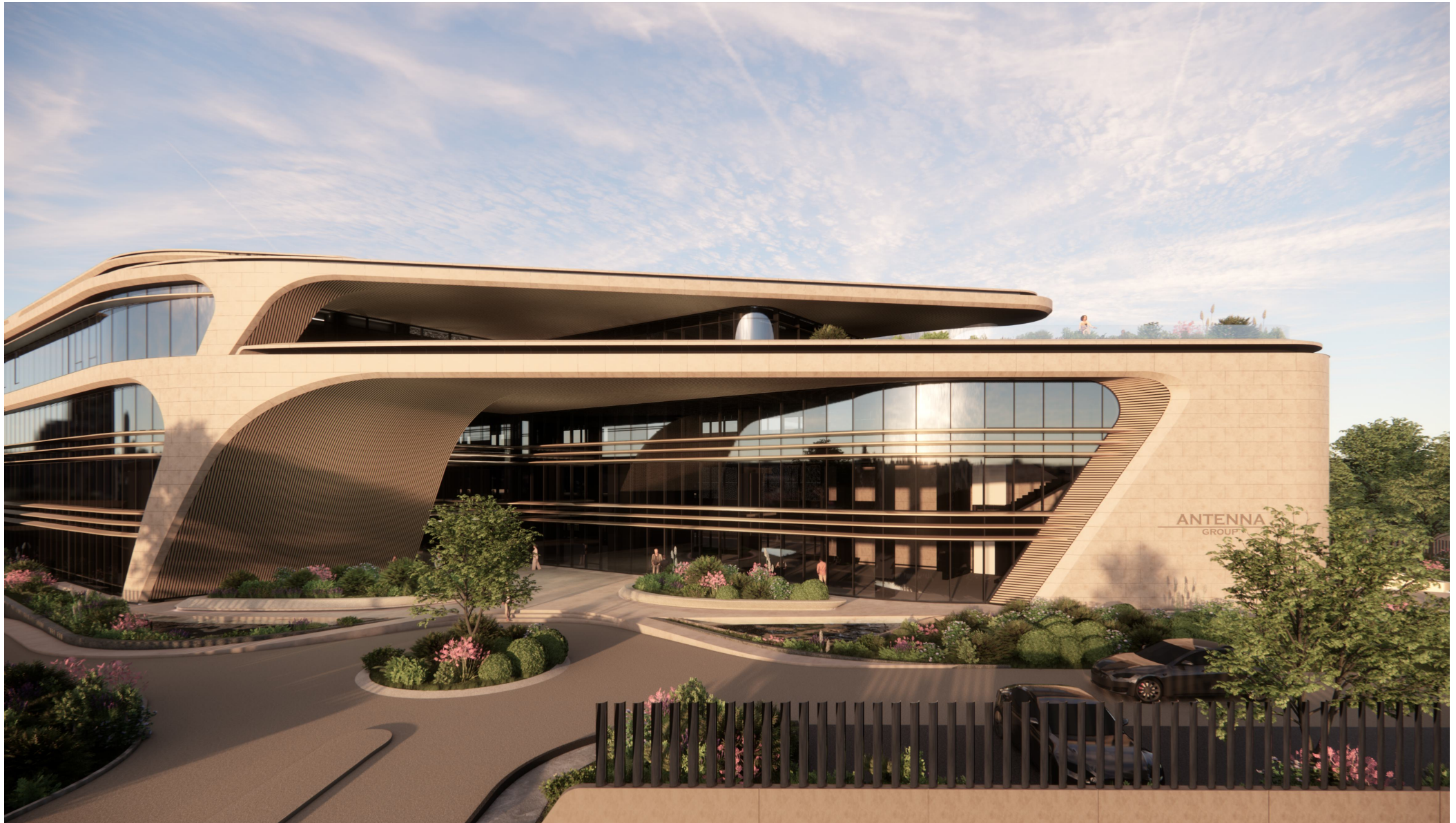


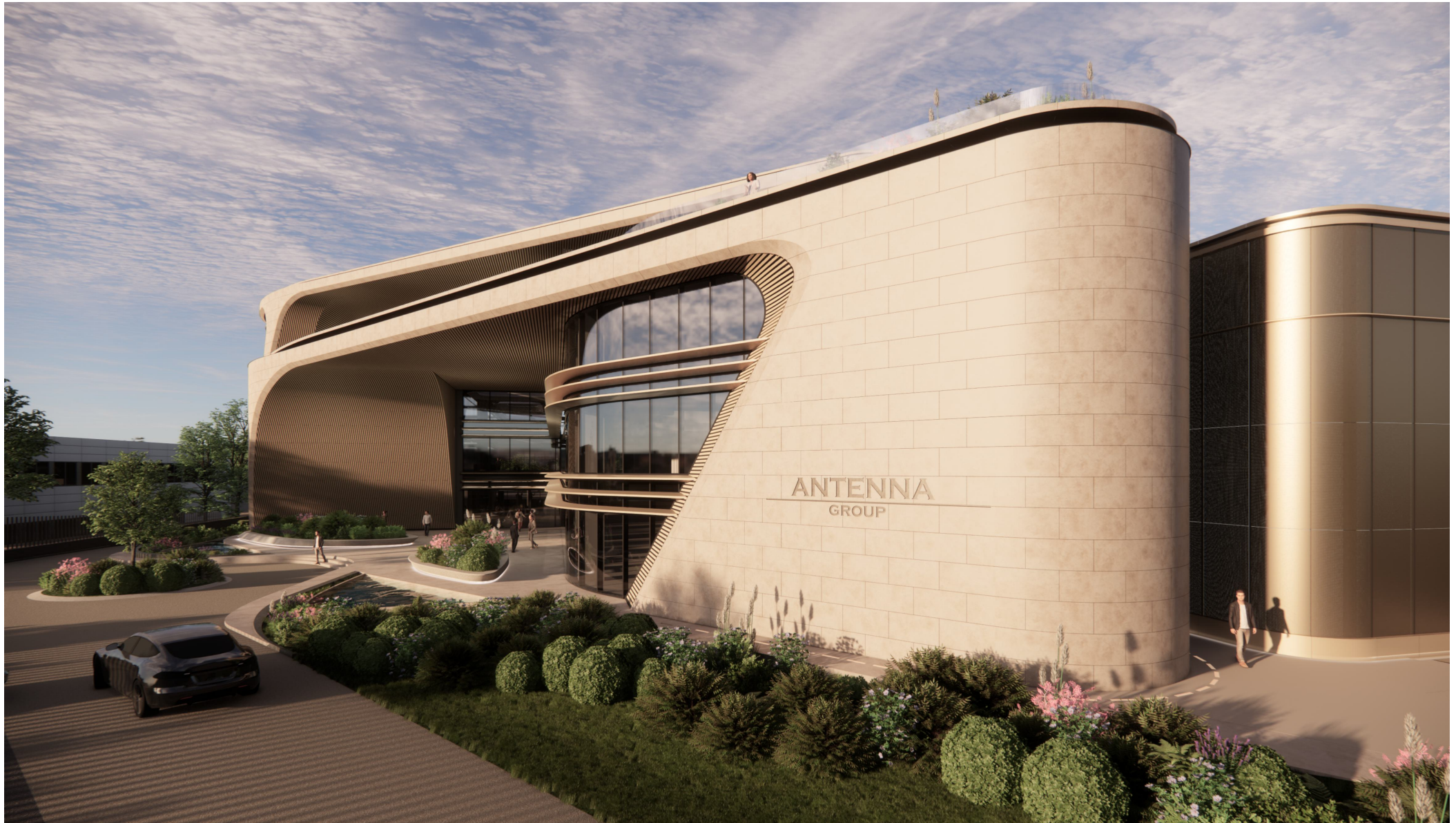
A dark, monochromatic architectural rendering of a modern building facade. The design features prominent horizontal slats or louvers that create a rhythmic pattern across the structure. The building's form is sleek and contemporary, with sharp lines and a sense of depth. The lighting is subtle, highlighting the textures and geometric shapes of the facade.

OFFICE COMPLEX & MEDIA CENTRE

Athens, Greece
Project Under Construction



Main entrance



Main entrance



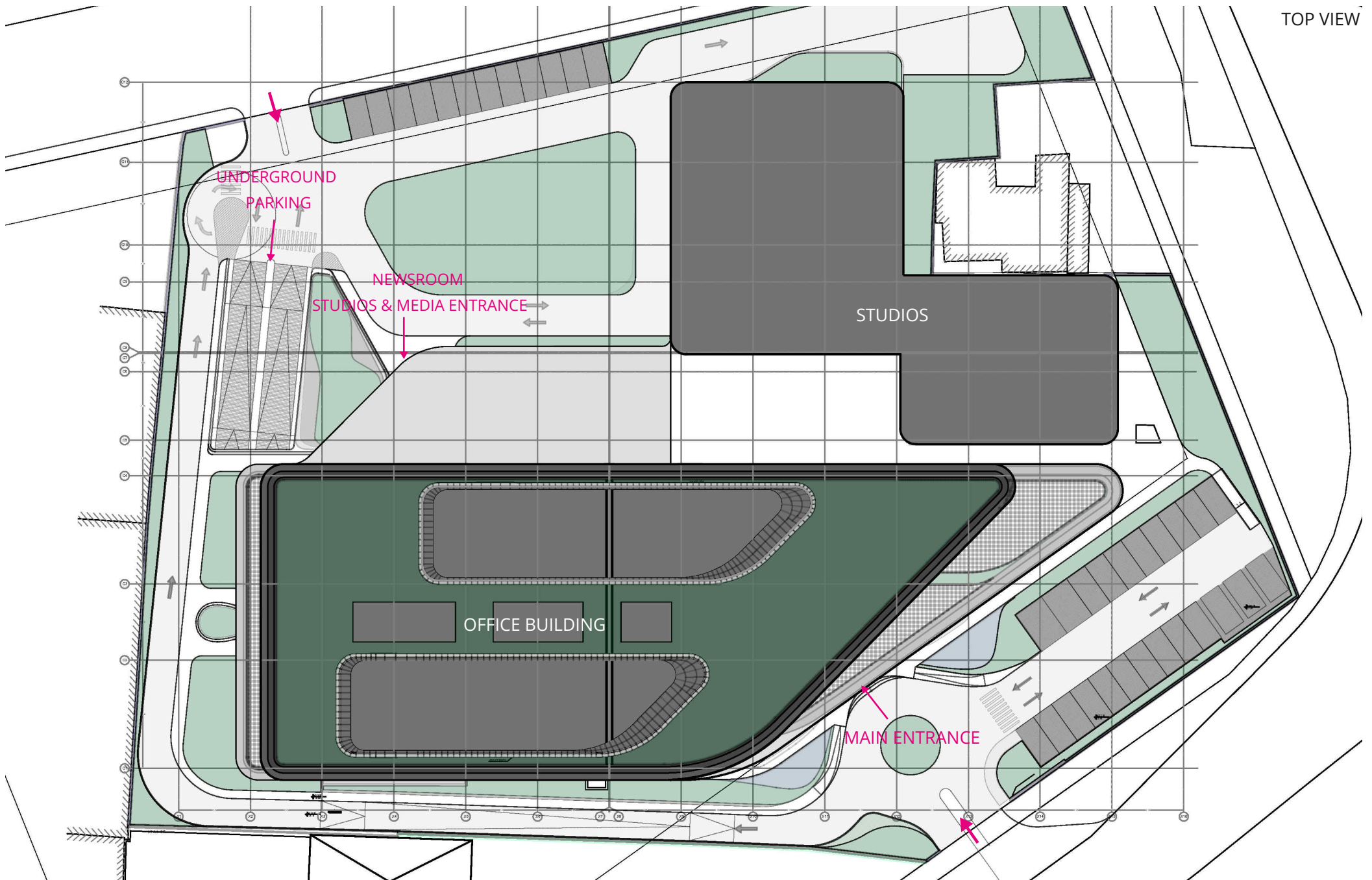
The project is the largest complex in Greece, which combines high-end offices and Media centre with State of the art TV & Radio Studios and it has an overall area of 24,000sqm.

The design concept is based on the idea of carving a solid stone, creating cavities and porosity. Inspired by rock formations sculpted by water, the building creates a designed nature of carved formations.

The program of the building develops in between the concave areas and the cavities that are generated from the mass sculpting. The design concept of the project reflects simultaneously, the solid philosophy of the user, who shapes the continuous flow of information, as a major media and broadcasting company.

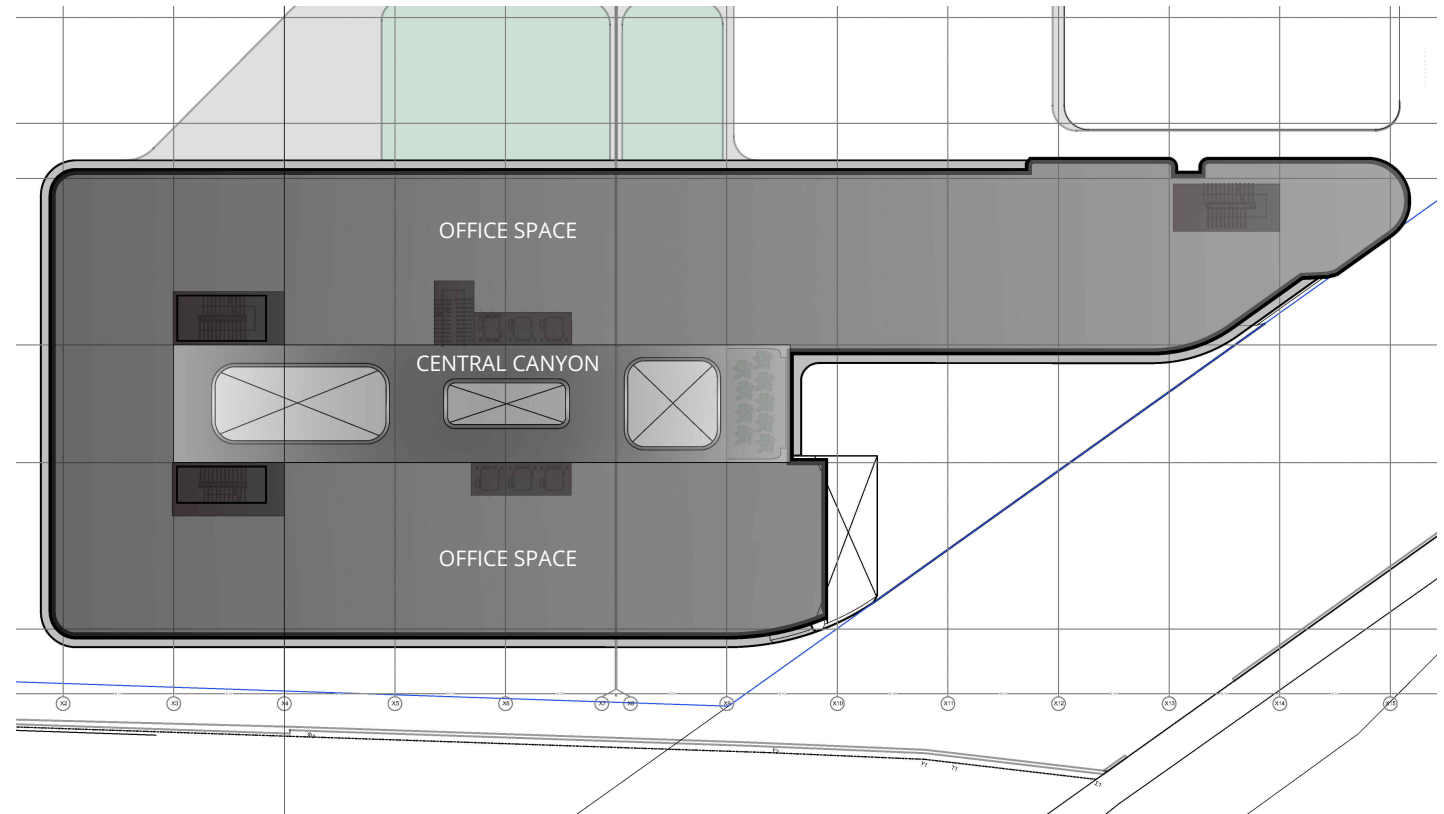
The building creates a sculptural silhouette with strong dynamics and the facade is made from limestone, aluminium, bronze and wood.

At the main entrance of the building we create a "cavity", a space of 3-storeys height with a timber 'underbelly', creating a fascinating moment that welcomes visitors. Through this imposing gesture, the main entrance reflects the unique identity of the project's architectural expression.



The typical plan of the office building develops into a horse-shoe shape, with the two opposite zones that host the office spaces, facing a central luminous canyon. Inside this central canyon, which extends over the 5 floors of the building, atriums and sculptural bridges, create an interplay in between the new porosity, increasing the visual communication and transparency within the building.

A secondary entrance is developed for staff, vehicular direct access to the underground parking and towards the newsroom, media floor and Studios, at the back side of the plot. This entrance has direct access to the studios area, while their services and supporting rooms, the newsroom, the control rooms, etc. are developed at the same level, creating a dedicated level exclusively for media.





The concept of carving & porosity, continues at the interior of the building as well, where a central canyon allows natural light to enter the building through its glass roof. Inside the canyon, sky bridges connect the office spaces, sculpting a new internal porous, while providing visual connection and views between floors.



Reception area at the canyon

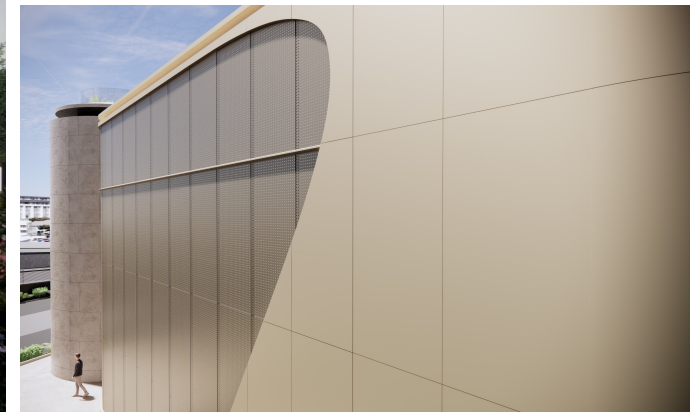


Experiencing the canyon with its porosity, sky bridges and gardens



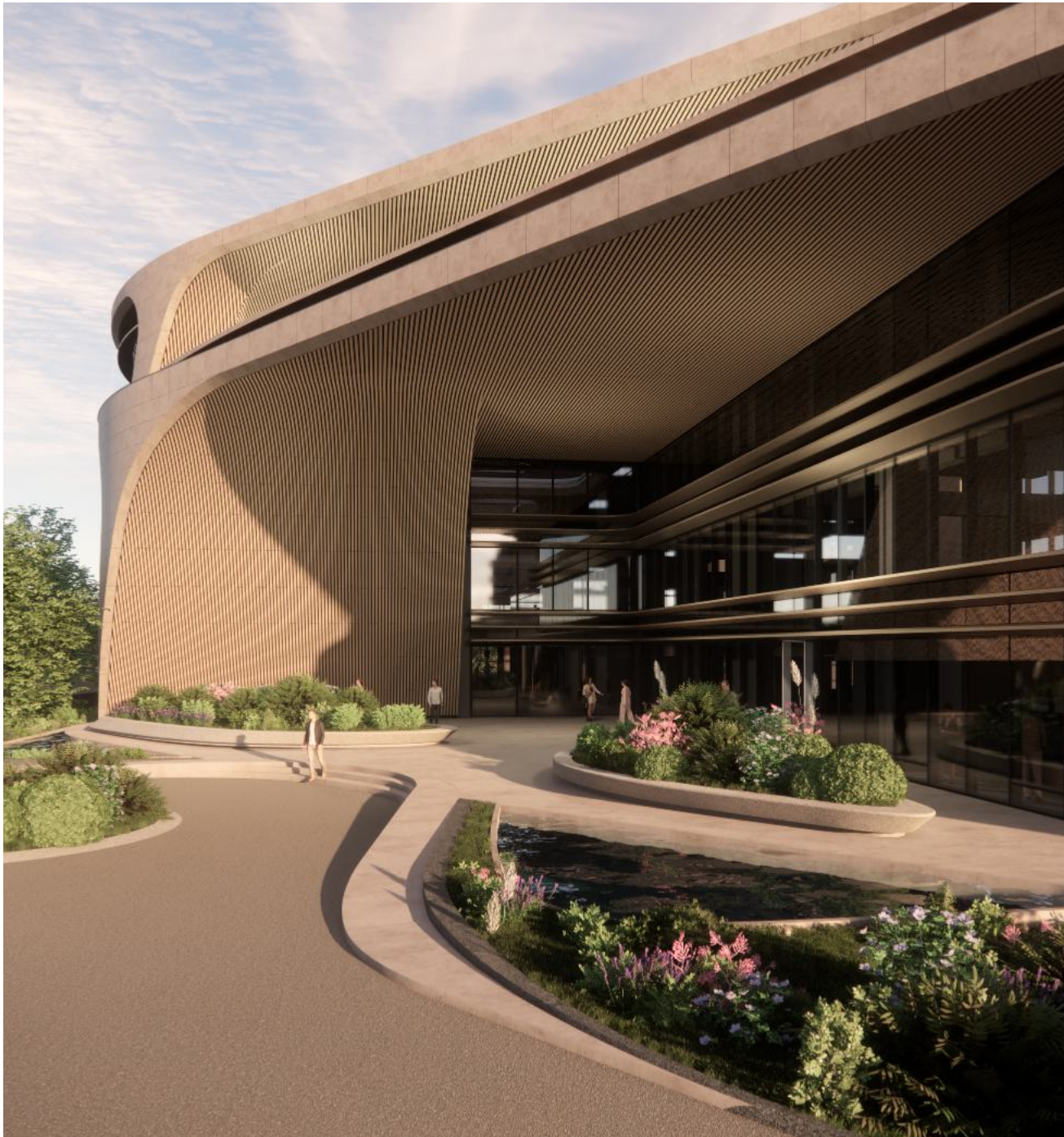


The facade design of the TV Studios is also following the porosity concept, where the solid volumes of the Studios are clad with perforated aluminium panels. Thus, during the day they perform as two imposing metallic cubes, while during the night through their porous skin, they cast lantern-like glow, transforming into delicate lightweight glowing instances, while through their luminosity they reflect the live TV program which takes place inside them.



Office building and Studios_ View from Ground Level.

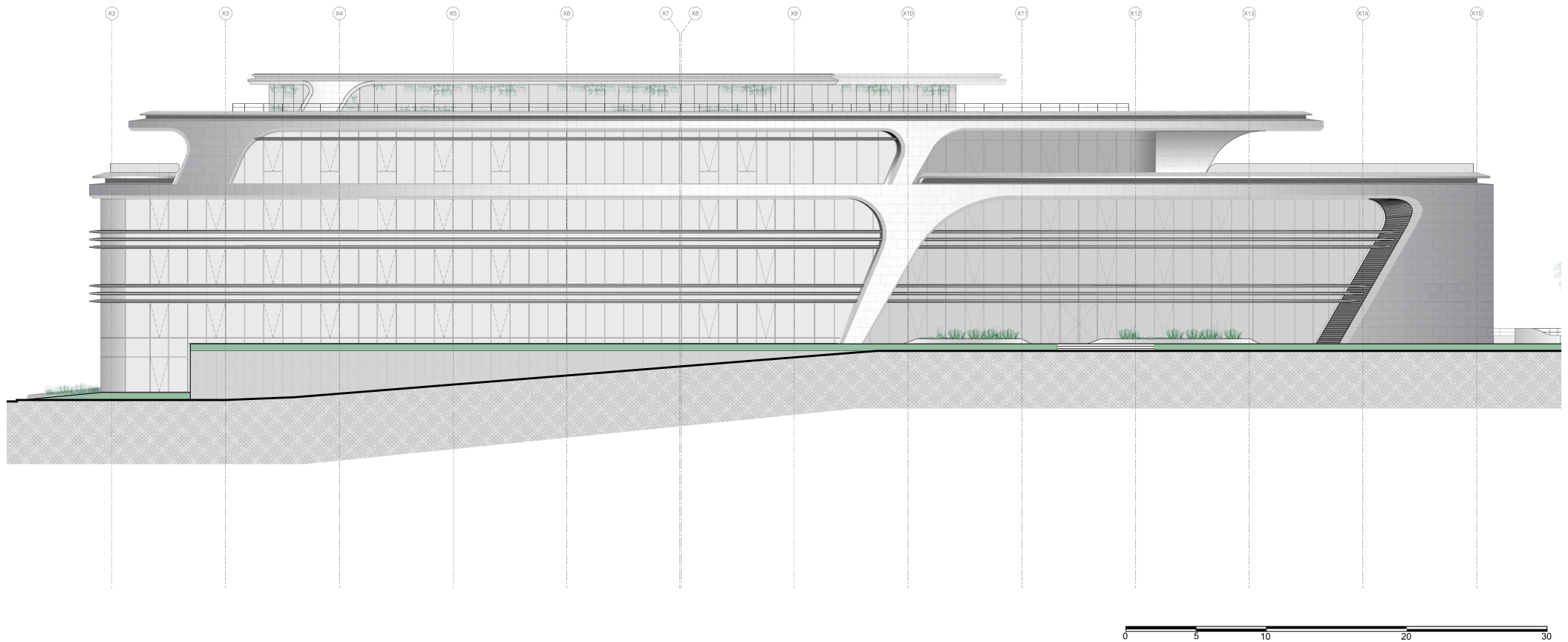
The main building and the Studios are connected at Level -1, creating a dedicated step-free level exclusively for media.



The project has been designed with the highest environmental and acoustic specifications. The biggest challenge of the project was to incorporate seamlessly and smoothly all special details, technical solutions and operational restrictions that this highly technical project required, into the architectural language and without compromising any design qualities nor the signature identity of the project. Thus the harmonious integration of all technical specifications into the design language was the main goal in order to maintain the highest architectural qualities together with the unique character of the project.

The project is under construction and due for completion early 2027.







THANK YOU