

NIMBUS

APARTMENT BUILDING



NIMBUS APARTMENT BUILDING

LIMASSOL, CYPRUS

This residential building stands on a site deeply rooted in the personal history of the family that commissioned it. Formerly occupied by the owners great-grandparents' home, the plot has long been associated with family gatherings, shared memories, and intergenerational living.

With time, the owners grandparents made the pivotal decision to replace their single-family house with a multi-residential building, with the vision of continuing to live close to their children, grandchildren and more recently their great-grandchildren—each in their own independent unit. The ambition was not only practical but also deeply emotional: to preserve family closeness while recognizing the need for personal space and evolving lifestyles.

Today, the building houses multiple generations of the same family:

The grandmother resides in one of the duplex apartments, her youngest son who resides abroad, frequently visits and shares the space with her and his family. One granddaughter lives with her partner and two young children in the other spacious duplex. Another married granddaughter occupies her own double bedroom apartment. And the youngest, single grandson also lives independently within the same structure.

The two remaining apartments are rented out and provide good passive income for the family, while keeping the door open for the changing needs of the family. This unique family composition posed a distinct architectural challenge: to design a building that could simultaneously accommodate the diverse needs of various age groups and lifestyles, from elderly comfort and accessibility to family-friendly layouts and spaces suited for young adults.

As a result, the project became more than just a residential development—it evolved into a multi-generational home, reflecting values of togetherness, autonomy, and adaptability. The architectural response had to balance privacy with connection, tradition with modernity, and individuality with shared identity.

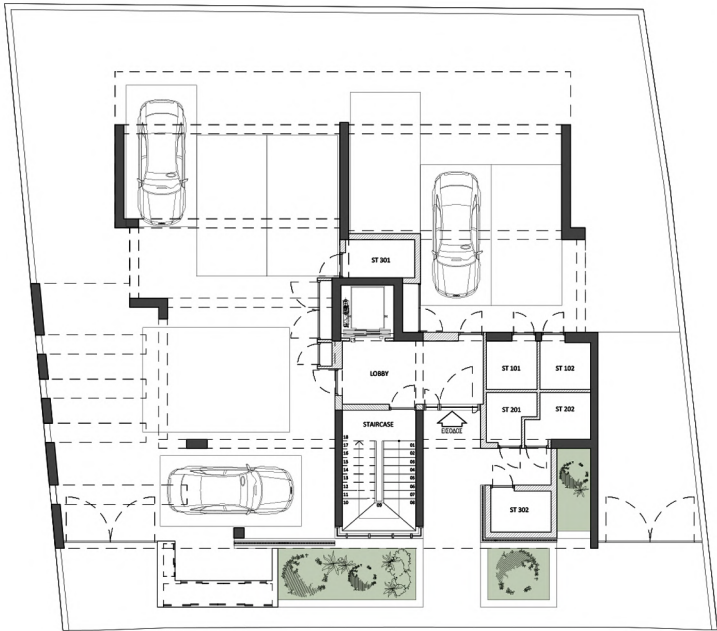


NIMBUS APARTMENT BUILDING

LIMASSOL, CYPRUS

This residential project consists of a total of six apartments. Four of the units are standard 2-bedroom apartments, while the remaining two are spacious duplexes featuring three bedrooms each.

The layout and room configuration of each unit have been thoughtfully designed to meet the daily needs and lifestyle of the residents, ensuring both comfort and practicality in every space.



GROUND FLOOR



FIRST FLOOR



SECOND FLOOR



NIMBUS APARTMENT BUILDING

LIMASSOL, CYPRUS

The duplex apartments span three levels:

The third floor accommodates the private areas, including all bedrooms and bathrooms, ensuring a quiet and intimate living environment.

The fourth floor is dedicated to shared living spaces, such as the kitchen, dining area, and living room, all of which open to small private verandas, promoting natural light and ventilation throughout the interiors.

On **the fifth floor**, each duplex enjoys exclusive access to a private roof garden, complete with a BBQ area, creating an ideal space for leisure, entertaining, and outdoor living in the urban context.

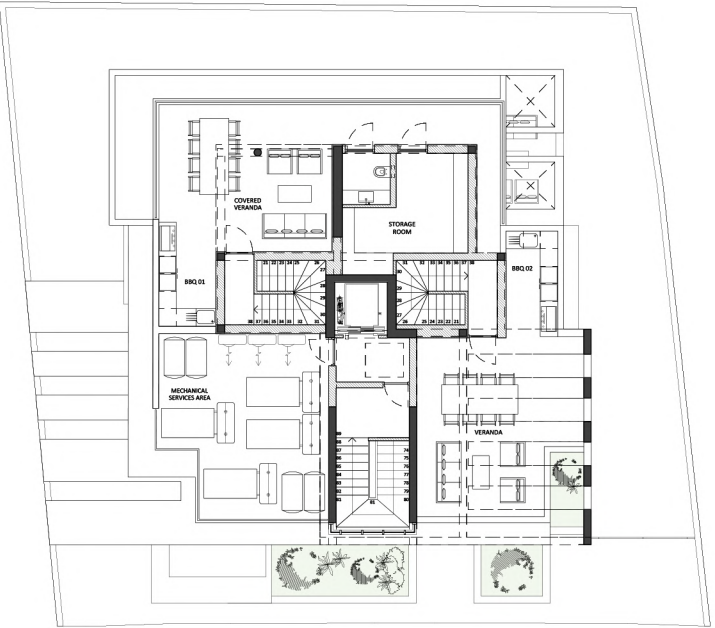
The design concept emphasizes vertical living, privacy between units, and a seamless indoor-outdoor connection, especially for the duplexes. The building offers a contemporary urban housing solution that balances compact functionality with comfort and elevated quality of life.



THIRD FLOOR



FOURTH FLOOR



FIFTH FLOOR



NIMBUS APARTMENT BUILDING

LIMASSOL, CYPRUS

The architectural vision behind this residential building centers on verticality, rhythm, and privacy, interpreted through a modern urban lens.



0 1 2 5 10



NIMBUS APARTMENT BUILDING

LIMASSOL, CYPRUS

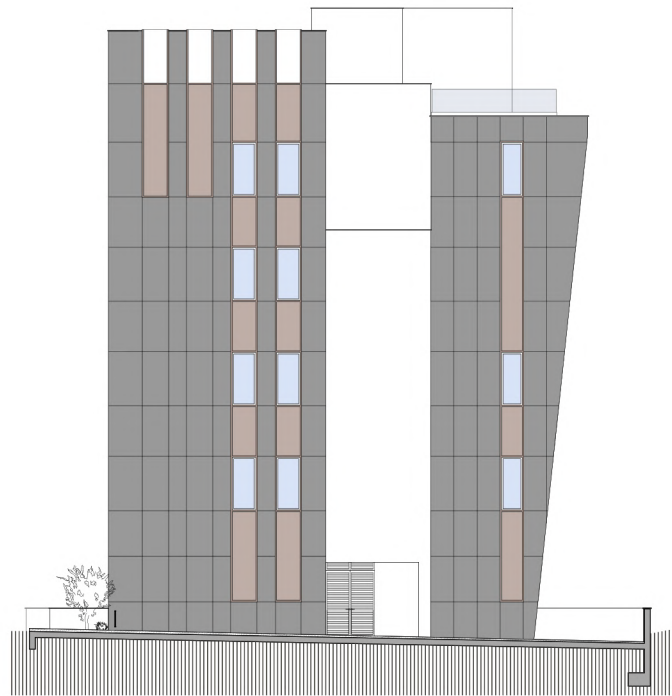
The design concept emphasizes:

Clarity in volumetric articulation, achieved through the interplay of solid and void across staggered balconies and recessed verandas.

A clean material palette—including exposed concrete, vertical wooden slats, and large glass panes—used to create a rhythmic and elegant façade with dynamic shadows and texture contrasts.

A vertical glass circulation core that acts as a visual spine of the structure, offering transparency and daylight into the internal communal spaces.

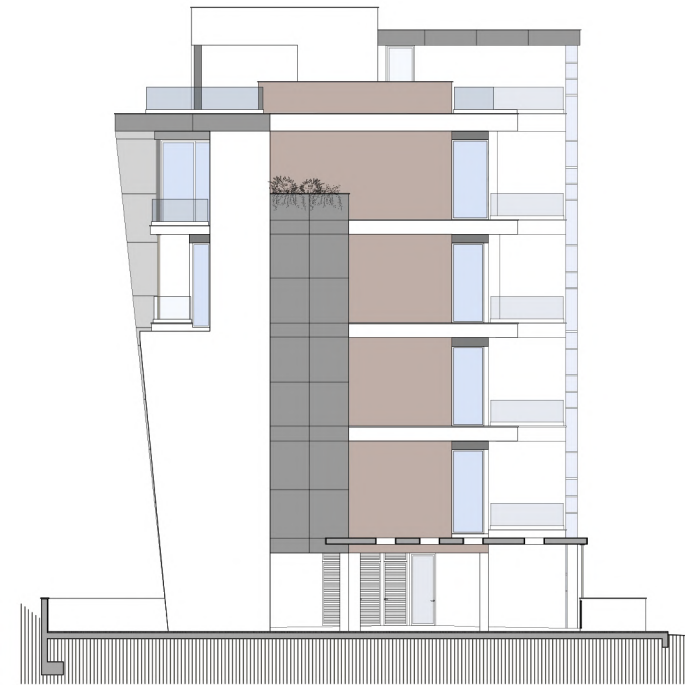
A strong focus on private outdoor living, with each unit enjoying generous balconies, while the duplexes are crowned with roof gardens, elevating the quality of life in a dense urban setting.



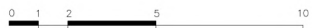
NORTH ELEVATION



WEST ELEVATION



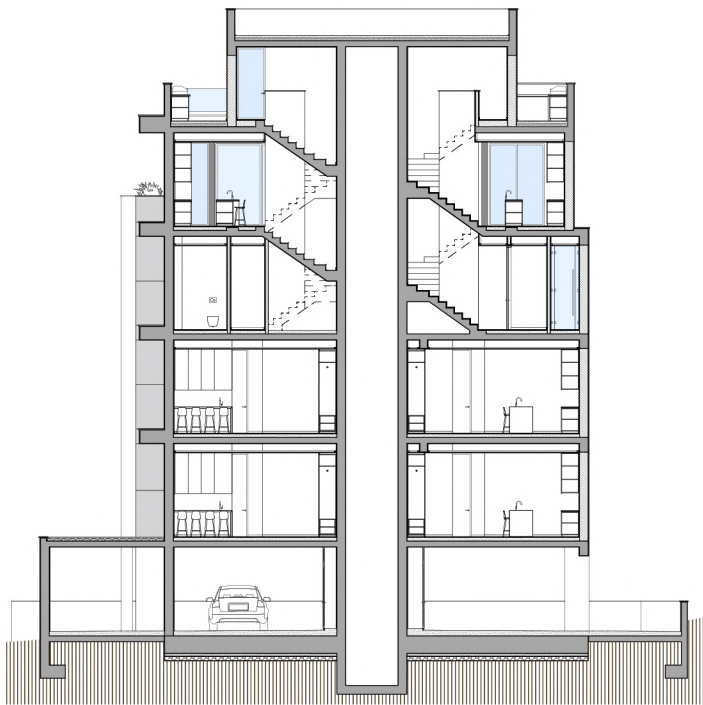
SOUTH ELEVATION



NIMBUS APARTMENT BUILDING

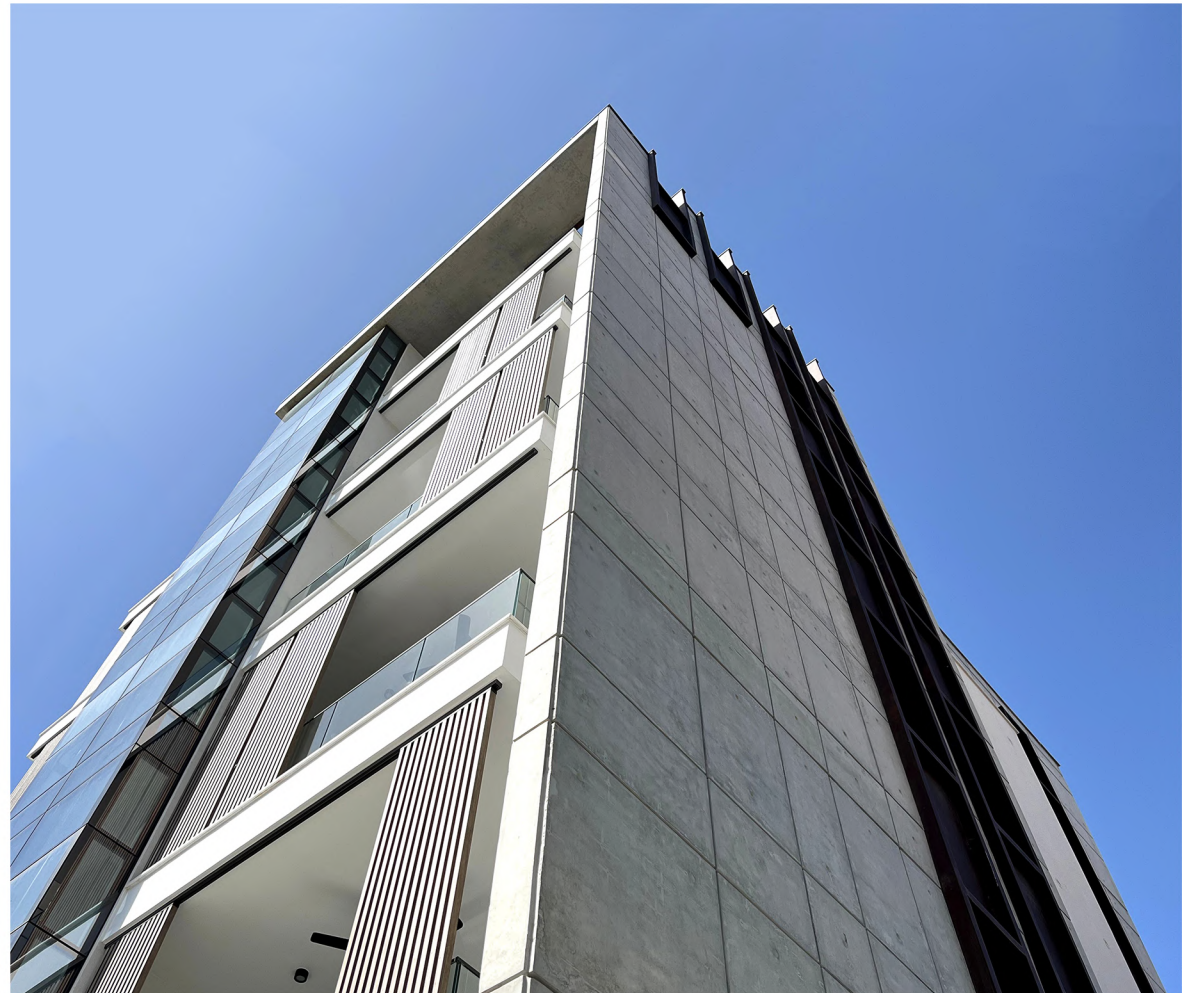
LIMASSOL, CYPRUS

The building aspires to create a sense of individuality within collective living, offering residents thoughtfully designed private zones while maintaining a cohesive architectural identity.



SECTION

0 1 2 5 10



NIMBUS APARTMENT BUILDING

LIMASSOL, CYPRUS

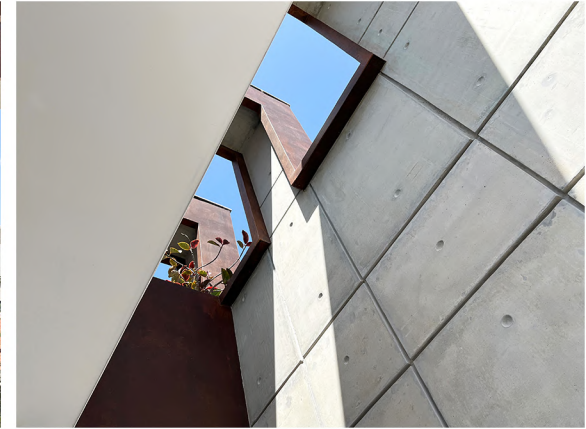
MATERIAL PRESENTATION

EXISTING TOGETHER

A key design feature of this project is the deliberate combination of concrete and Corten steel. These two materials, though contrasting in nature, create a powerful dialogue when brought together.

Concrete, with its raw, solid, and timeless character, forms the structural and spatial foundation. In contrast, Corten steel introduces warmth, texture, and a dynamic quality through its evolving patina. Over time, the weathered surface of the steel adds depth and a sense of natural aging, allowing the material to integrate harmoniously with the environment.

The interplay between the cool, monolithic presence of concrete and the warm, oxidized surface of Corten creates a balance between permanence and transformation, between heaviness and lightness. This material contrast enriches the architectural expression and reinforces the project's identity.

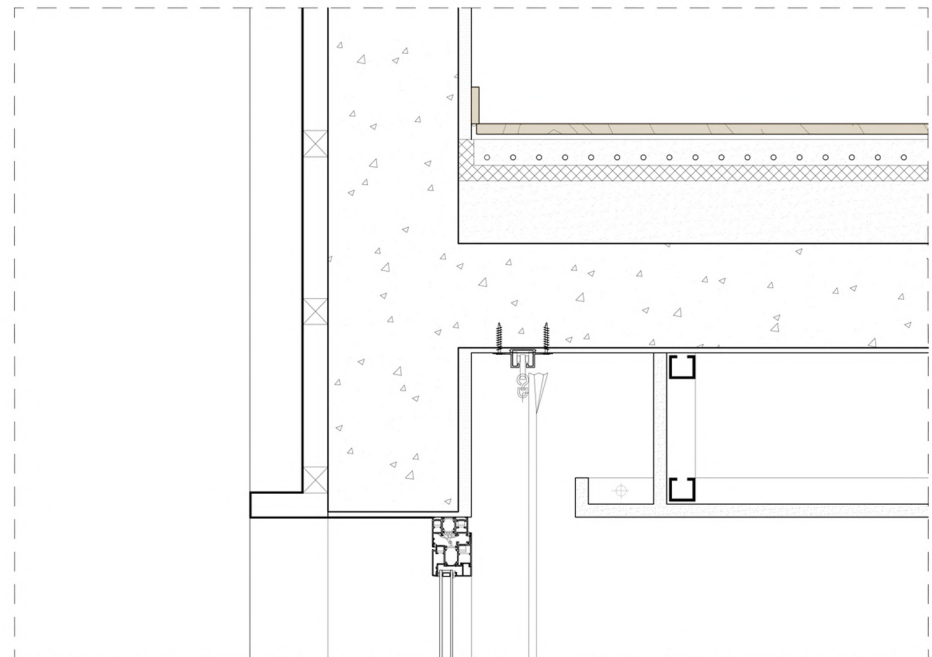
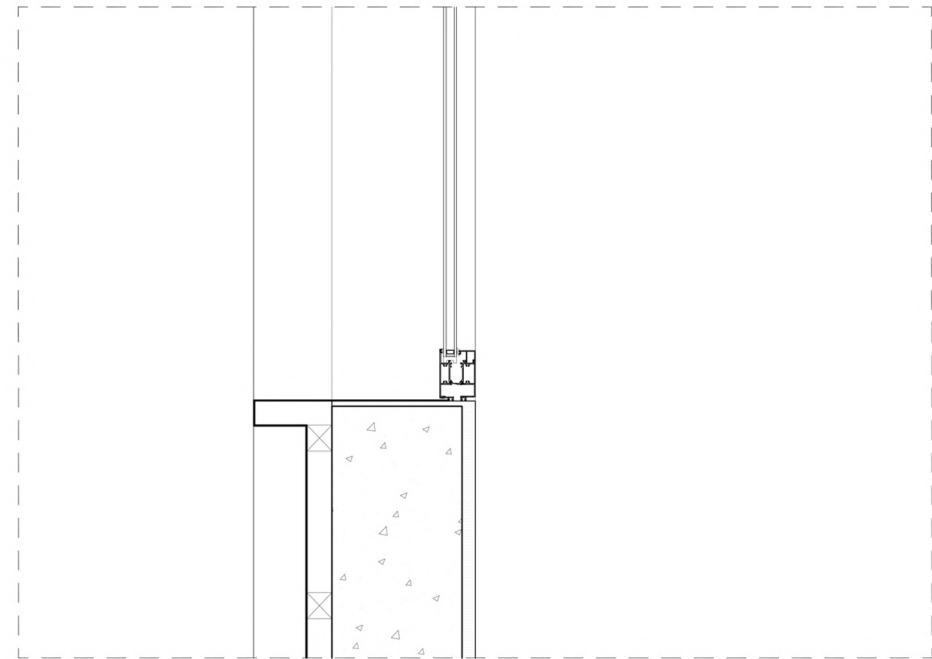


NIMBUS APARTMENT BUILDING

LIMASSOL, CYPRUS

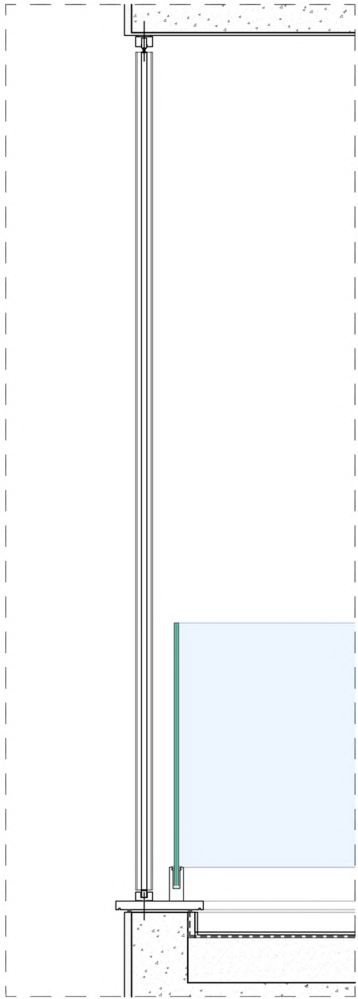
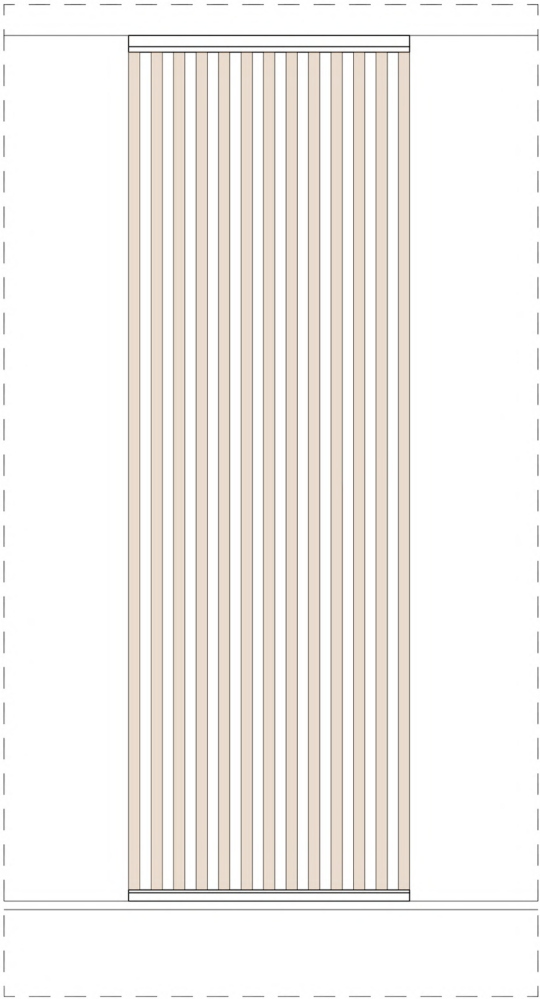
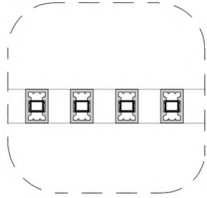
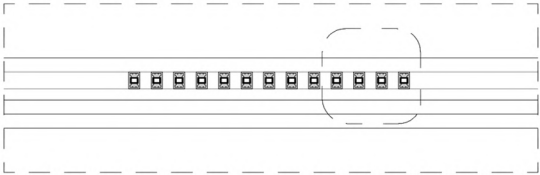
NORTH FACADE

CORTEN STEEL CLADDING DETAIL



NIMBUS APARTMENT BUILDING
LIMASSOL, CYPRUS

EAST FACADE
MOVABLE LOUVERED SHADING PANELS DETAIL



NIMBUS APARTMENT BUILDING

LIMASSOL, CYPRUS



CUSTOM DETAILS

A DRAWING FOR EVERYTHING

In this project, every element was designed and executed with precision and attention to detail. All components were custom made, tailored specifically to meet the design vision and functional requirements of the space. Nothing was left to chance or standardized production.

This custom approach not only highlights the craftsmanship involved, but also reflects the importance of architectural integrity and the close collaboration between design and construction teams.

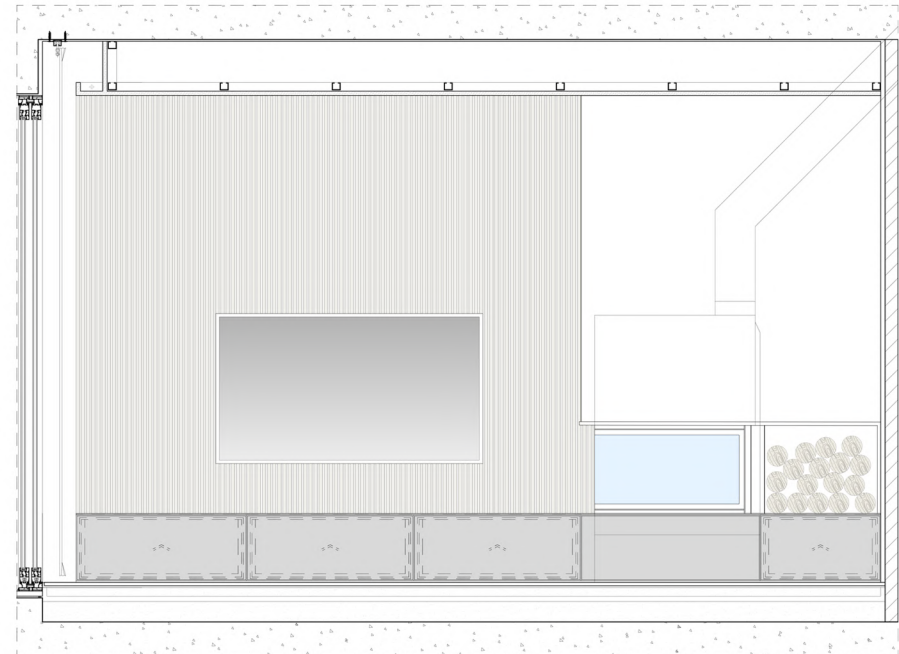
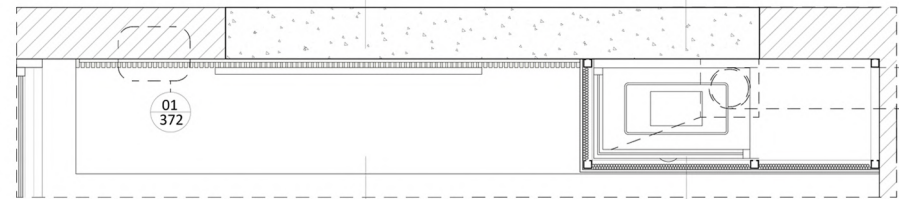


NIMBUS APARTMENT BUILDING

LIMASSOL, CYPRUS

DUPLEX DETAILS

CUSTOM FIREPLACE AND TV WALL



NIMBUS APARTMENT BUILDING

LIMASSOL, CYPRUS



CUSTOM DETAILS

A DRAWING FOR EVERYTHING

Detailed construction drawings were developed for each unique element and provided to the corresponding subcontractor. This ensured that every part of the project was manufactured and installed according to the exact specifications of the design. From materials and finishes to dimensions and connections, everything was carefully coordinated to create a cohesive and high quality result.



NIMBUS APARTMENT BUILDING

LIMASSOL, CYPRUS

COMPUTER GENERATED IMAGES

FROM PLANNING TO COMPLETION



NIMBUS APARTMENT BUILDING
LIMASSOL, CYPRUS

