

Marvel Gem

Status: Completed in 2024

Location: Sofia, Bulgaria

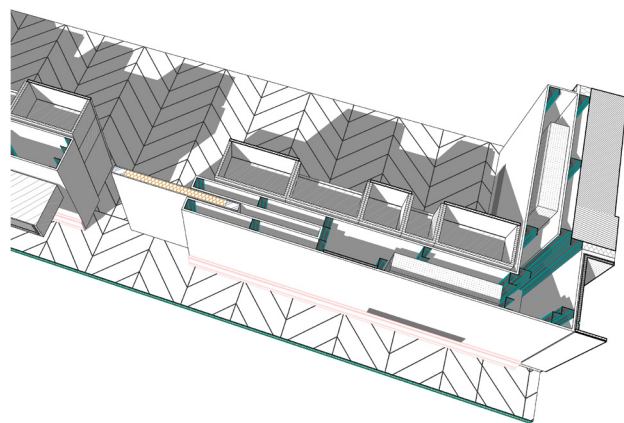
Built area: 252 sq.m

The presented project is a southwest facing apartment in the wide center of Sofia. In the plan, at the macro level, we create a very definite division between the living room, the bedroom and the children's tract. Each of them has its own bathroom, which is very different in function and, accordingly, in design.





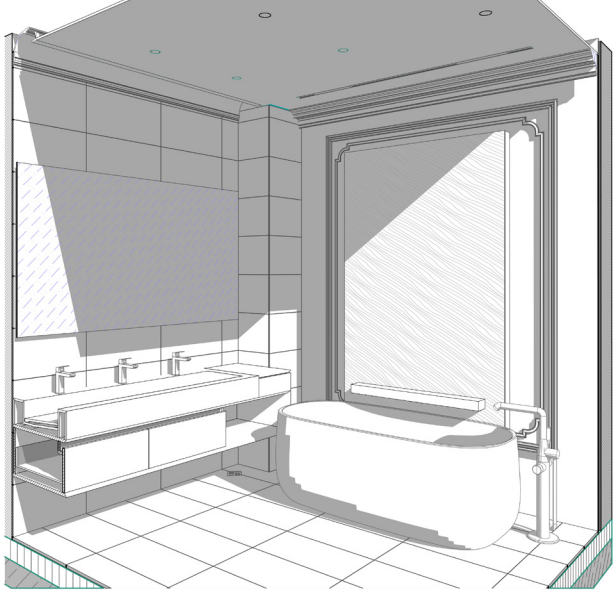
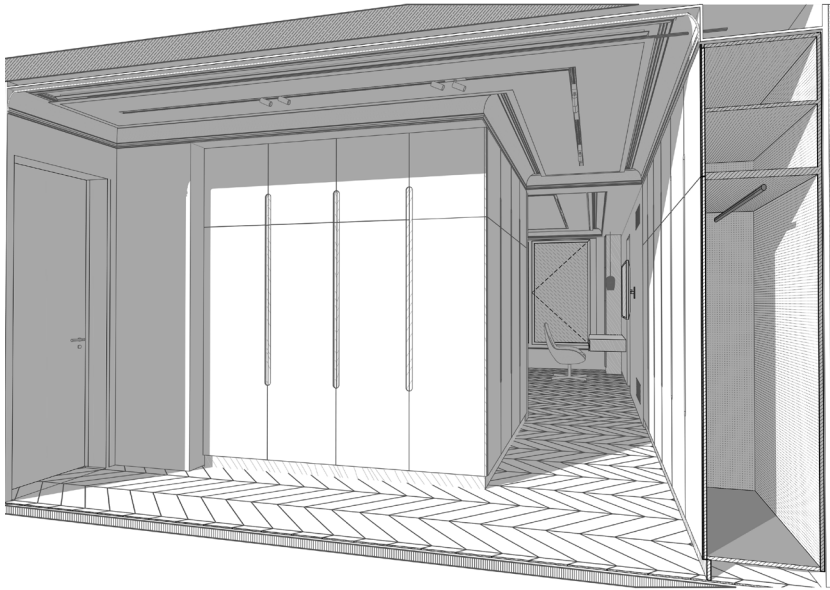
The entrance to the children's area is through a large walk-through wardrobe. On the right is the bathroom, which has a large triple sink, bathtub, as well as a shower and toilet separated by a partition. Through the transitional wardrobe you get to the study room, which has a small storage room of its own. A partition wall with a sliding door separates it from the children's bedroom, which through it can be completely closed from the rest of the tract.





The first largest children's tract combines the rooms for sleeping, studying, wardrobe and bathroom. They are completely separated in an area independent of the rest of the dwelling, but at the same time the largest space is allocated for them in terms of area.





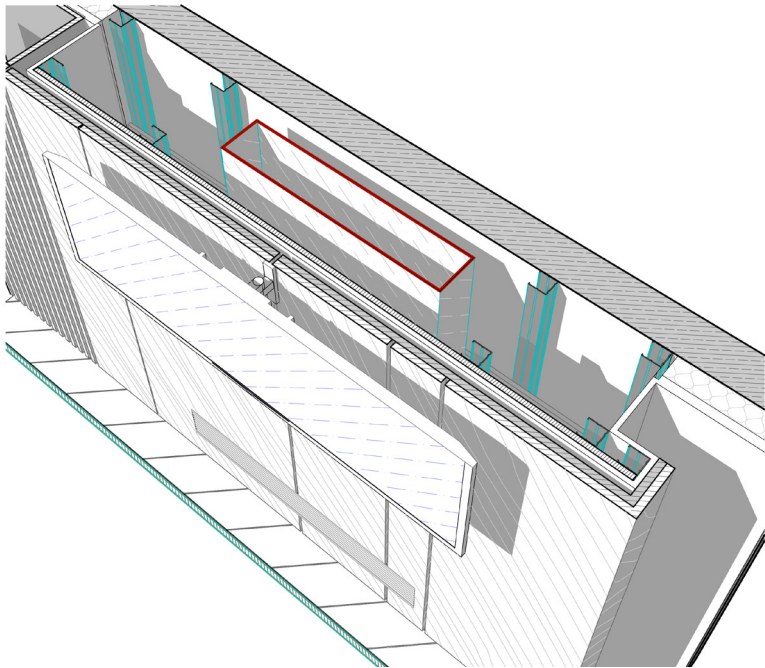




The large living room incorporates the most functions, such as entertainment, dining and cooking. We have rich lighting from two main directions - south and west. The long, straight kitchen and the island to functionally separate the room are fertile ground for both design and function. Between the two columns a place is designated for the dining table in the brightest corner of the room. Around the soft seating is where the largest free space in the living room and in the entire home is preserved.











The last tract consists of a bedroom, a closet and a bathroom with a sauna. There is a continuous visual and functional connection between the bedroom and the closet, emphasized by changing the flooring and framing it with wall ceramics at one end and a mirror at the other.

In the immediate connection to the entrance hall are the auxiliary rooms - one with technical functions and one bathroom for guests.







