

METEOR PUBLIC SPACE

STATE: REALISED/ APRIL 2023

Spatial Design Approach for a New Landscape

The site is located in the main infrastructural corridor between the cities of Durrës and Kavaja, yet it is connected with the seaside town of Golem. The project site in Golem offers a unique opportunity to present not only a new landmark in relation to the beautiful beach of Golem but also to harmoniously blend its natural and residential character.

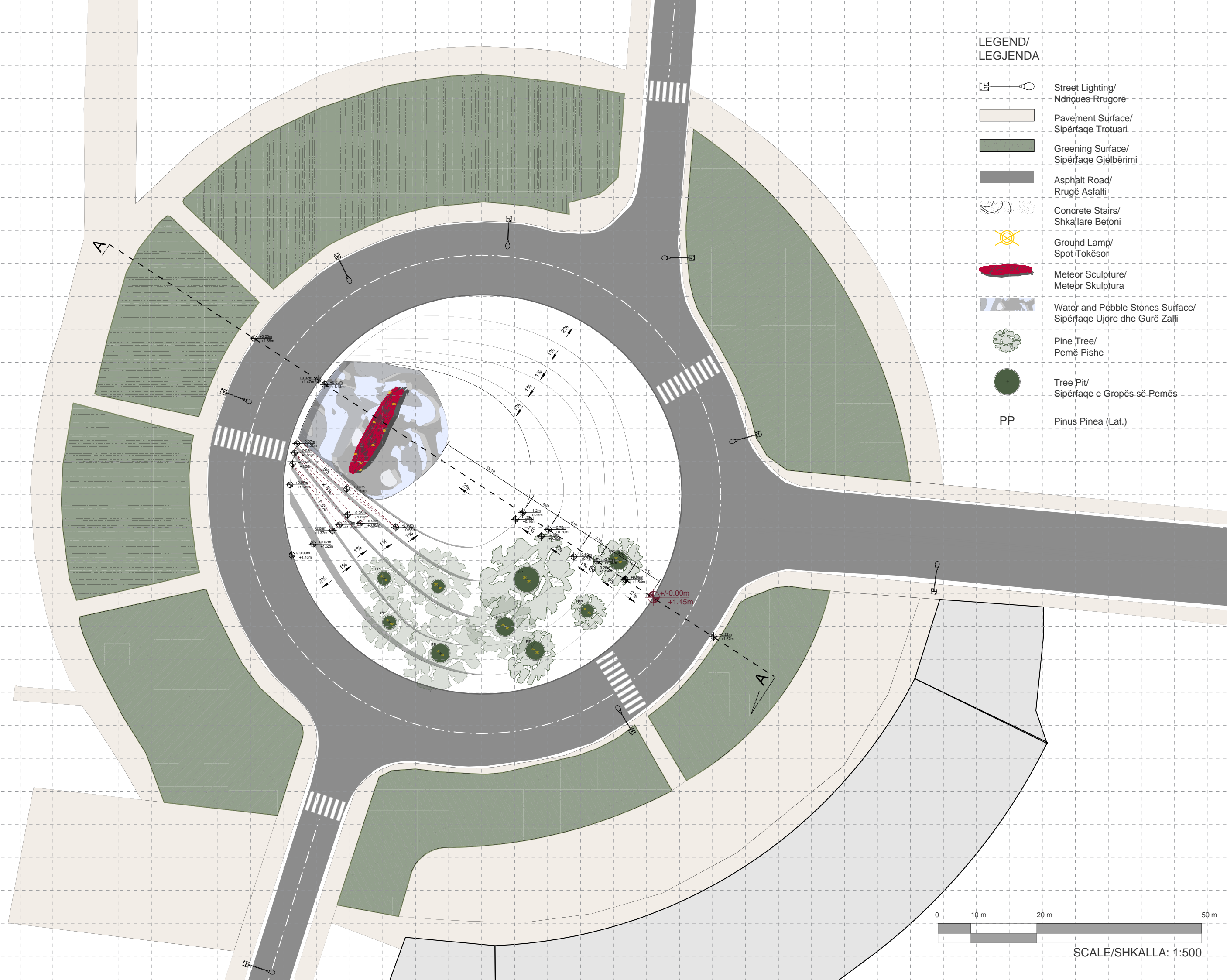
As the Meteor lands in the west part of the intervention site, it creates a new magnetic field and allows a new public space to be born. Its position respects the street vector, allowing visitors to enjoy the sea view with an open horizon, while creating a new sense of monumentality and asymmetrically redefining the former "roundabout". As its coalition with the terrain of Golem creates a ripple effect rather than a "crash", a "soft landing" generates new areas for visitors to sit and create a new relationship with the public space.

Organically formed by this gesture, they are covered with white stone, reflecting light to avoid overheating but also to humbly frame the artwork rather than distract. The urban design and architectural approach embrace the Meteor and aim to present it with full respect to the natural landscape of the seafront.

Its natural curves allow visitors to sit on the amphitheater without the need to implement additional urban furniture, presenting a minimal and sustainable approach. While its direct connection with the street level and morphed slopes offer direct accessibility for children, the youth, the elderly and individuals with special needs. Once you are part of this "natural" amphitheater created by the Meteor, sunken a few centimeters into the landscape, you can find yourself immersed in a new perspective, between the sea and the sky.

A few small pines stand still in the existing roundabout, part of the genius loci of the area. The intervention aims not only to respect the existing trees but also to re-enable the former character of the area, well known for its "soft pines"/"pishat e buta".

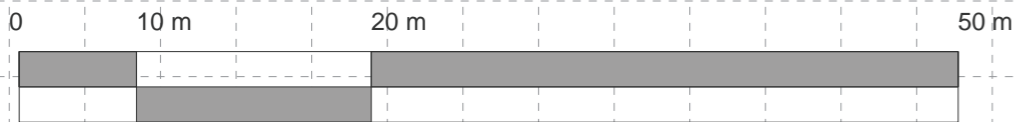
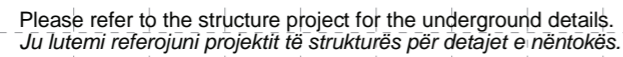
The Meteor waterfront public space gently presents itself in the context, taking advantage of the reflection surfaces of the sea and water fountain and the natural light of the sun and moonlight. As soon as the lighting elements of the public space are sensitive enough to illuminate the artwork from the inside through diffuse and warm lights, embracing the colors of its skin and body interior. This strong "creature" on earth, due to its size and materiality, is yet so sensitive and open, as its interior body is open to embrace new explorers, curious visitors, or children that want to play inside it but also protect them with its soft skin on the inside. In the moment of contact between the Meteor and the public space, a new surface is born, reflecting the relationship between sea and earth, water and sand.



PP	Pinus Pinea (Lat.)
----	--------------------



SECTION A-A
PRERJA A-A



SCALE/ SHKALLA: 1:500























