

LEISURELY HOUSE

Location: Romania, Jud. Ilfov, Com. Afumati

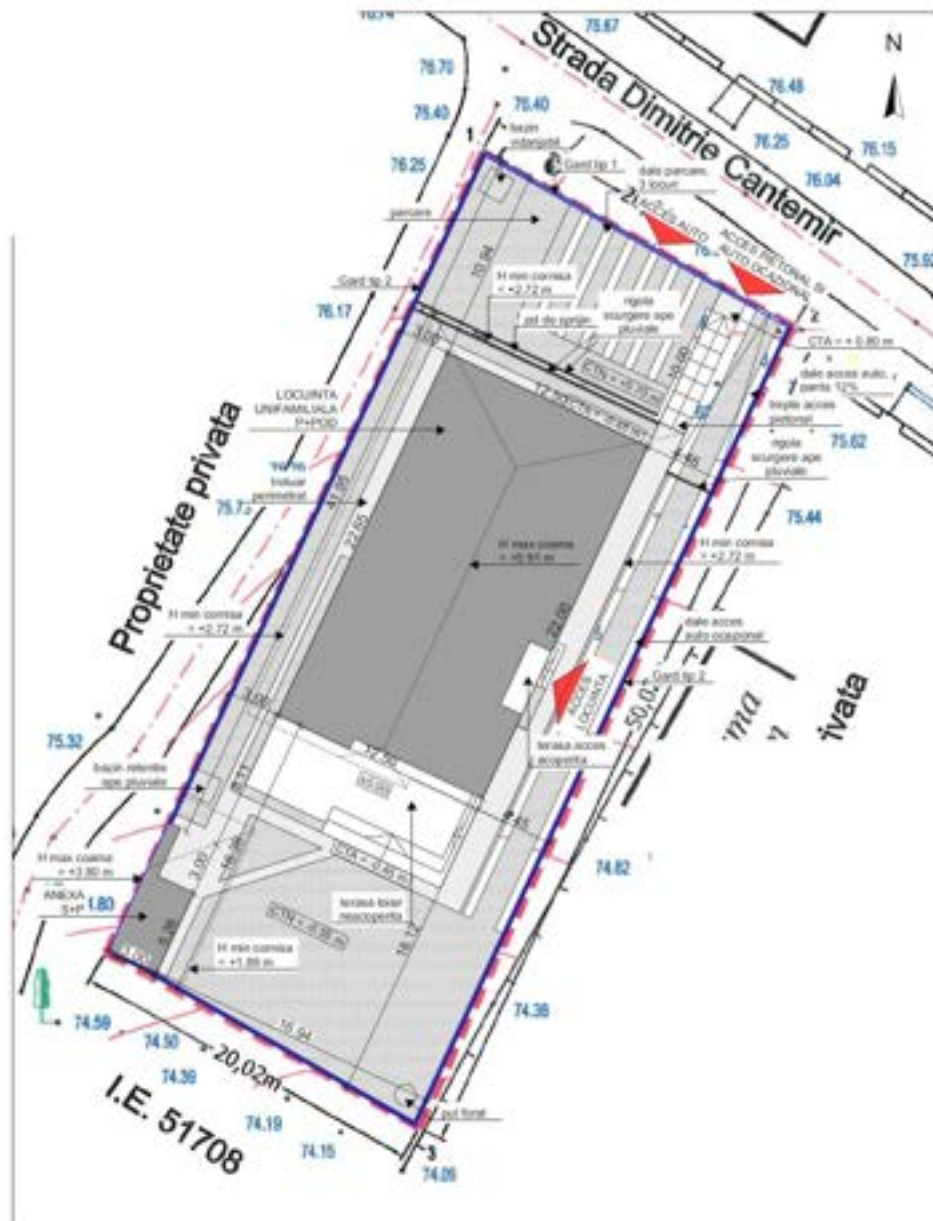
Area: 357.09 sqm

Design initiation date: 17.11.2020

Construction completion date: 07.11.2022

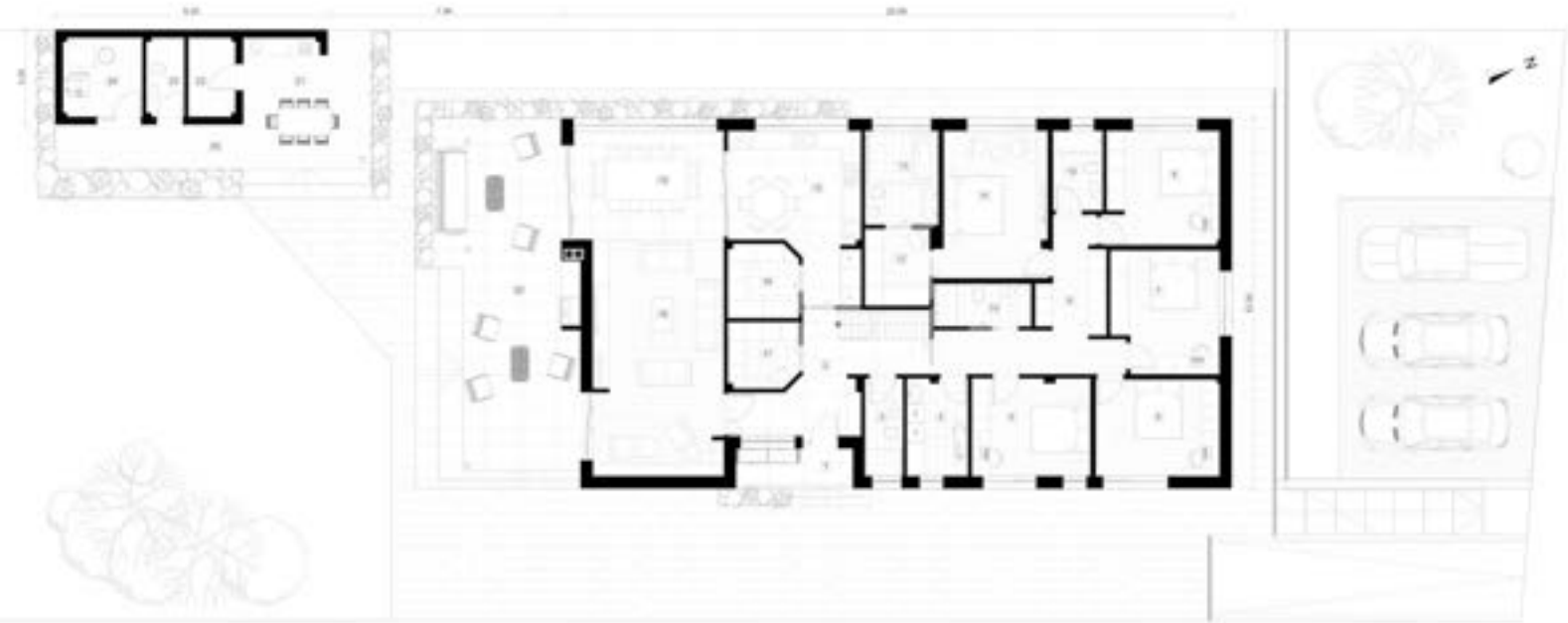


Nestled on a sloped plot with unobstructed views toward a nearby lake, this single-level residence was designed as a serene refuge for a young family with children. The intention was to create a home that opens itself generously to the landscape, while shielding itself from the bustle of the street — a house that breathes and invites tranquility.



Labels and areas:

- 1.Entry terrace – 5.33 sqm
 - 2.Entry hall – 17.47 sqm
 - 3.Bathroom – 4.33 sqm
 - 4.Washing room – 6.90 sqm
 - 5.Bedroom – 13.35 sqm
 - 6.Bedroom – 13.79 sqm
 - 7.Bedroom – 14.68 sqm
 - 8.Bedroom – 15.02 sqm
 - 9.Hallway – 17.15 sqm
 - 10.Bathroom – 4.62 sqm
 - 11.Bedroom – 17.94 sqm
 - 12.Dressing – 5.76 sqm
 - 13.Bathroom – 8.01 sqm
 - 14.Bathroom – 4.88 sqm
 - 15.Kitchen – 21.28 sqm
 - 16.Pantry – 5.97 sqm
 - 17.Dressing – 5.31 sqm
 - 18.Living room – 35.49 sqm
 - 19.Dining – 18.87 sqm
 - 20.Loisir terrace – 49.73 sqm
 - 21.Summer kitchen – 8.23 sqm
 - 22.Cold room – 4.34 sqm
 - 23.Bathroom – 3.52 sqm
 - 24.Technical room – 7.24 sqm
 - 25.Terrace – 20.85 sqm
- Total usable area = 245.92 sqm
- Total built area = 357.09 sqm



From the very beginning, the guiding principle was simplicity and calm: a low, wide roofline anchored the building to the terrain, while natural materials and warm earthy tones softened its presence. The ventilated ceramic façade in shades of beige and terracotta establishes a visual continuity with the wooden soffits and surrounding greenery, creating a dialogue between architecture and site.

The house is organized entirely on one floor, emphasizing horizontal fluidity and comfort. A large, covered terrace becomes a central element of the layout, seamlessly connecting the living areas to the garden and lake beyond. Here, the family can gather, cook, or simply unwind in the filtered light.





Interior design continues the same philosophy of warm minimalism and earthy tactility. Natural oak floors in a herringbone pattern, textured wall finishes, and custom-designed furniture elements in wood and metal form a cohesive language. A neutral palette is accented by muted greens, dusty pinks, and touches of black, all balanced to maintain the overall sense of calm.



The kitchen was conceived as a warm, functional, and visually distinct space — a heart of the home that balances openness with intimacy. Separated from the living and dining area by a generous glazed sliding partition, it benefits from natural light on two sides, while maintaining visual connection with the rest of the house. The furniture combines matte white and natural wood finishes, accentuated by brass details and soft green tones. Ample storage, integrated appliances, and a custom breakfast nook make the kitchen both highly practical and welcoming. The space invites daily rituals and family gatherings, embodying the same serene, earthy atmosphere that defines the entire home.



The bedrooms and bathrooms continue the same principles of material coherence and functionality. Wardrobes are custom-integrated, and design gestures like arched mirrors or grooved cabinet fronts bring visual interest while maintaining a clean atmosphere. The bathrooms mix terrazzo, vertical wood textures, and pastel tiles, creating tactile and calming environments for daily rituals.

This apartment is not about visual spectacle, but about harmony, comfort, and coherence — a space where materials, light, and geometry quietly support the rhythm of everyday life.



Each room was designed with personality and joy in mind: children's bedrooms reflect imagination and playfulness through custom furniture and lively wallpapers, while the parents' suite is anchored by a bold feature wall and serene materials.



The bathrooms were approached as intimate sanctuaries within the home, each reflecting a distinct character while maintaining material and tonal coherence. A combination of natural textures, graphic tiling, and refined lighting design creates an atmosphere of both functionality and quiet luxury. Freestanding basins and integrated storage add clarity and elegance, while black and brass fixtures introduce a subtle tactile contrast. Each bathroom is tailored to its user — from playful and colorful compositions in the children's bathrooms to the more serene, mineral pal-

Together, all these spaces speak to a deeper architectural intention — to create a home that is deeply rooted in context, emotionally resonant, and aesthetically coherent. More than just a collection of rooms, the project is a holistic response to the needs of a young family seeking warmth, tranquility, and connection — to one another, and to the nature that surrounds them. Through discreet interventions and carefully layered materials, the house fosters a feeling of peace, belonging, and a daily sense of joy — a true leisurely home.

