



Lazli Bay Retreat – A Blend of Serenity and Modern Design Where Nature Meets Contemporary Comfort

A Program of High Complexity: Set on Albania's dramatic Adriatic coastline, Lazli Bay embodies a sophisticated response to a challenging topography, a dual-purpose brief, and a vision of integrated living. The project balances the demands of two distinct functions: a seafront luxury hotel and a meandering residential complex shaped to foster both community and privacy. Despite programmatic contrasts, both volumes are shaped by a common architectural language that enhances formal coherence and reinforces identity.

Navigating Site and Regulation Constraints: The project addresses a difficult site configuration—narrow, elongated, and sloped—by curving the residential volume in a sinuous form that maximizes sea views while creating internal courtyards. These voids serve as green, social microclimates and represent an innovative spatial response to site irregularities. In parallel, urban regulations, volumetric constraints, and natural conditions were transformed into compositional tools, driving the project's organic rhythm and layered public-private transitions.

Efficiency and Economic Value: Through an optimized layout, passive strategies, and a compact building footprint, Lazli Bay offers a cost-efficient design that maximizes spatial quality without compromising budget targets. The result: a refined architectural solution that translates budget into lifestyle value, while aligning tightly with the client's timeline and expectations. Material selections and technical systems were chosen to ensure durability, reduced operational costs, and long-term environmental and economic performance.

Architecture Across Scales: On an urban scale, the hotel volume anchors the coastline, marking the edge between land and sea with an open, terraced form. At the pedestrian level, the residential block's articulated loggias and green buffers offer tactile intimacy and rhythm. From the largest gesture—the snake-like massing—to the smallest detail—the interplay of light and shadow on vertical gardens—the design retains its integrity and cohesion across scales.



Environmental Integration and Sustainability: Sustainability is not an add-on but a design driver. The form itself enhances passive ventilation and natural lighting. Vertical greenery improves thermal comfort, promotes biodiversity, and supports a stable microclimate. Courtyards allow for stormwater management and increase porous surface area, reducing heat-island effects. The project is primed for the integration of renewable energy systems, underlining its ambition to become a benchmark for environmentally responsible coastal development.

A Place for People: More than a real estate project, Lazli Bay is conceived as a social condenser. The network of gardens and semi-private courtyards stimulates interaction while preserving residential intimacy. Playgrounds and gathering areas are embedded naturally within the architectural language, encouraging daily social rituals. The design enhances the human experience—visually, spatially, and socially—offering sensory richness and emotional resonance for inhabitants and visitors alike.

Critical Reflection and Forward Thinking: By reconciling density with openness, and exclusivity with accessibility, Lazli Bay raises questions about how we inhabit waterfront environments in the context of climate and urbanization pressures. It challenges conventional coastal development patterns by proposing a soft-edged, environmentally attuned alternative—one that grows from the land rather than imposing upon it.

Innovation and Identity: The project's defining gesture—the serpentine residential structure—introduces both formal originality and social potential. It reinterprets the archetype of the linear block through curvature, creating differentiated experiences along its length and encouraging communal life. The result is a typological and urbanistic experiment, embedding innovation not only in form, but in the way space is experienced and shared.

Terrace Plan ▶



3rd Floor Plan ▶



6th Floor Plan ▶



2nd Floor Plan ▶



5th Floor Plan ▶



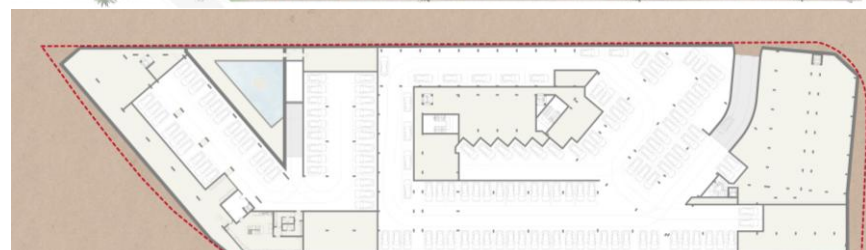
1st Floor Plan ▶



4th Floor Plan ▶



Underground Plan ▶



Ground Floor Plan ▶





Section -apartment building



Street View from the West



Street View from the North-West Intersection



View from Hotel's Pool



View from the Water Feature Separating the Hotel from the Apartment Building



View of First Floor Hotel Terrace



Street View from the North



Aerial View from the North



Aerial View from the South



View from the Courtyard of the Apartment Building



View from the Playground of the Apartment Building