

# KA11

RESIDENTIAL BUILDING







# KA11

## RESIDENTIAL BUILDING

KA11 is a residential building situated in the heart of Sofia, within the Lozenets district. The project redefines the urban landscape by skillfully balancing scale, materiality, and context.

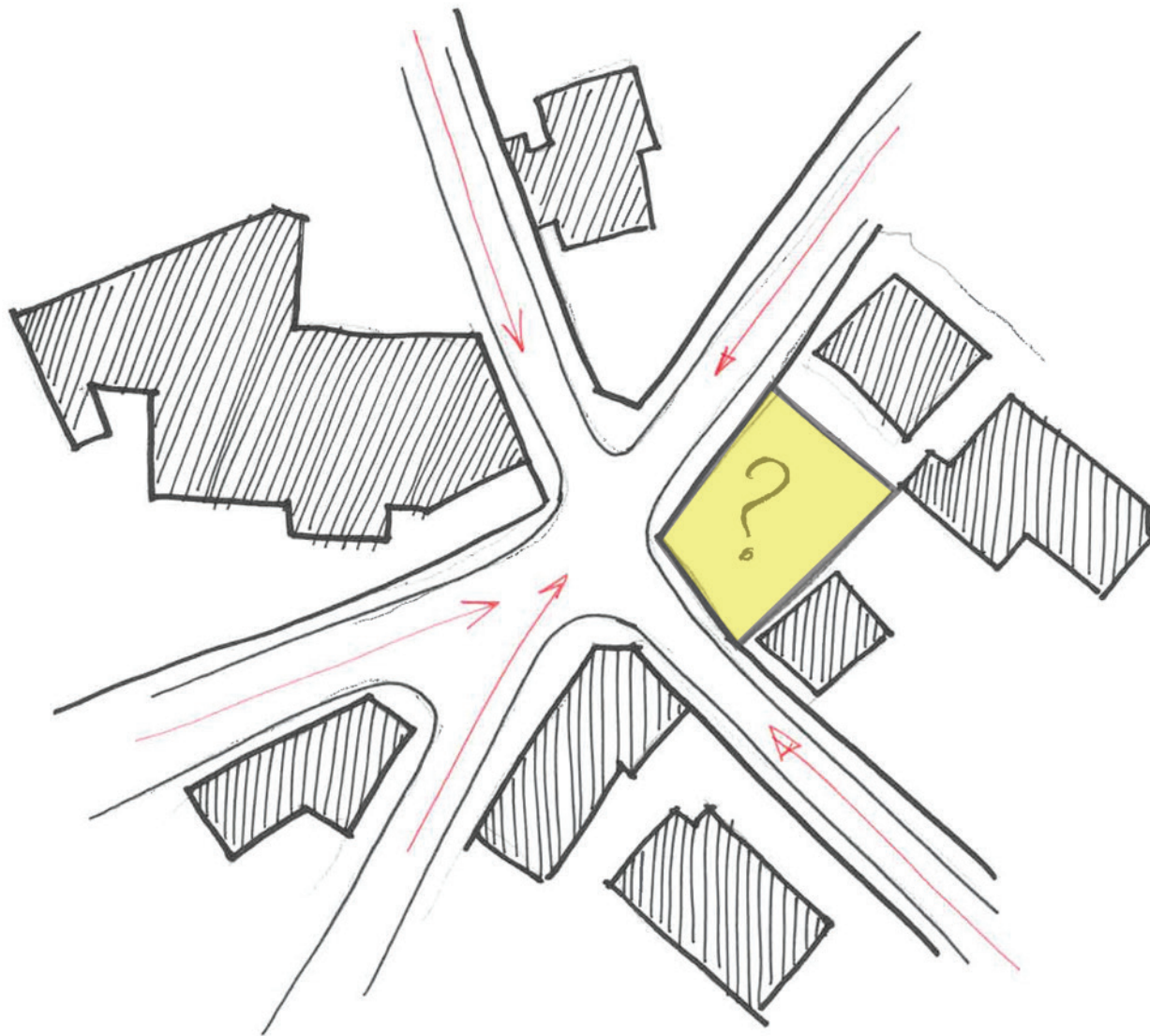
The building features five residential floors, including an attic level, a ground floor with commercial spaces, and an underground level.

Its compact yet striking form responds to the diverse architectural surroundings, establishing a contemporary presence while maintaining a sensitive relationship with its context.



# KA11

## RESIDENTIAL BUILDING

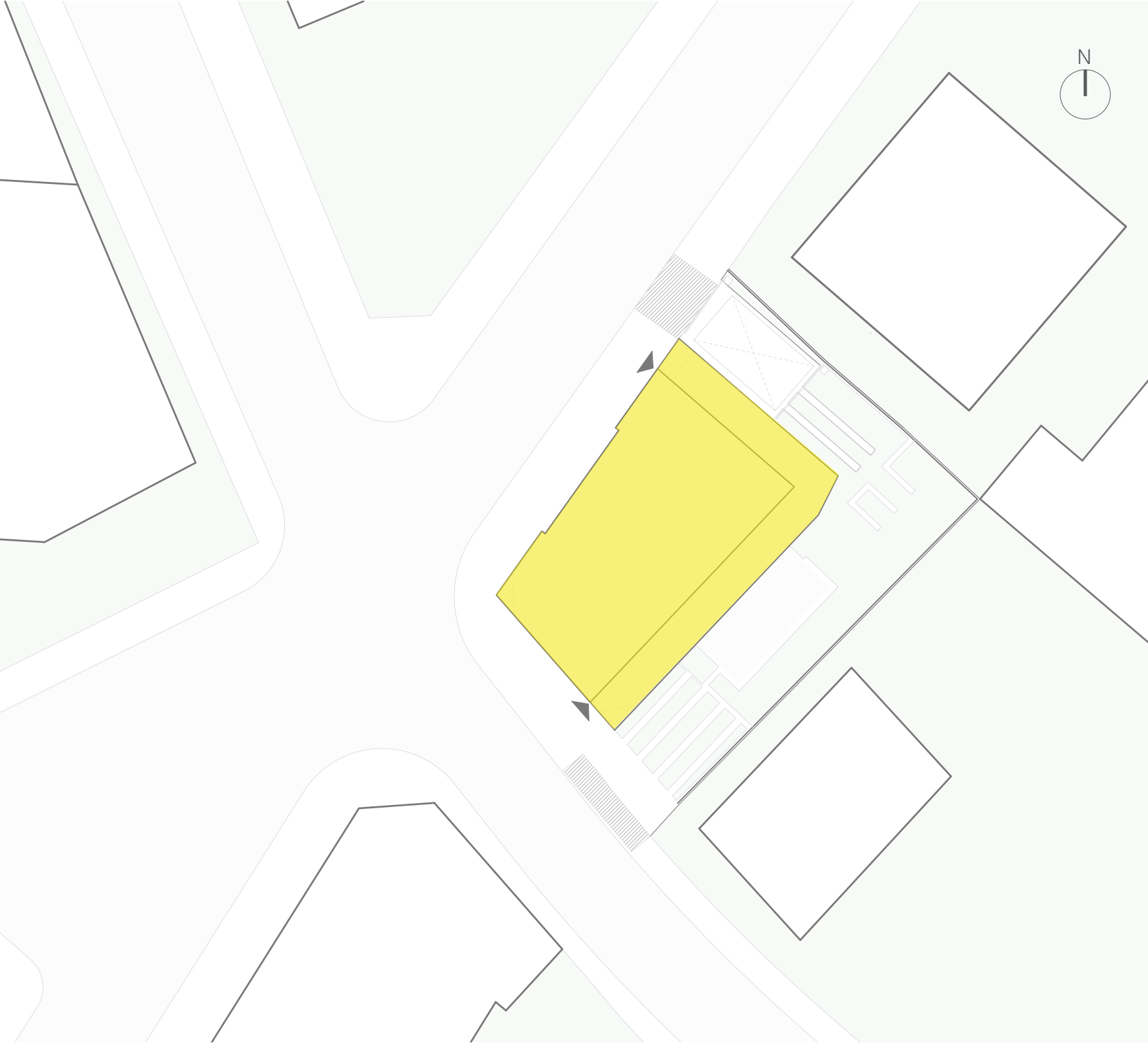


Located at a complex five-way intersection within a cultural heritage ensemble, KA11 serves as a mediator between contrasting architectural environments.

The historic greenery and low-rise structures of the old neighborhood, the imposing 14-story socio-modernist block, and the nearby church form a distinctive urban backdrop.

# KA11

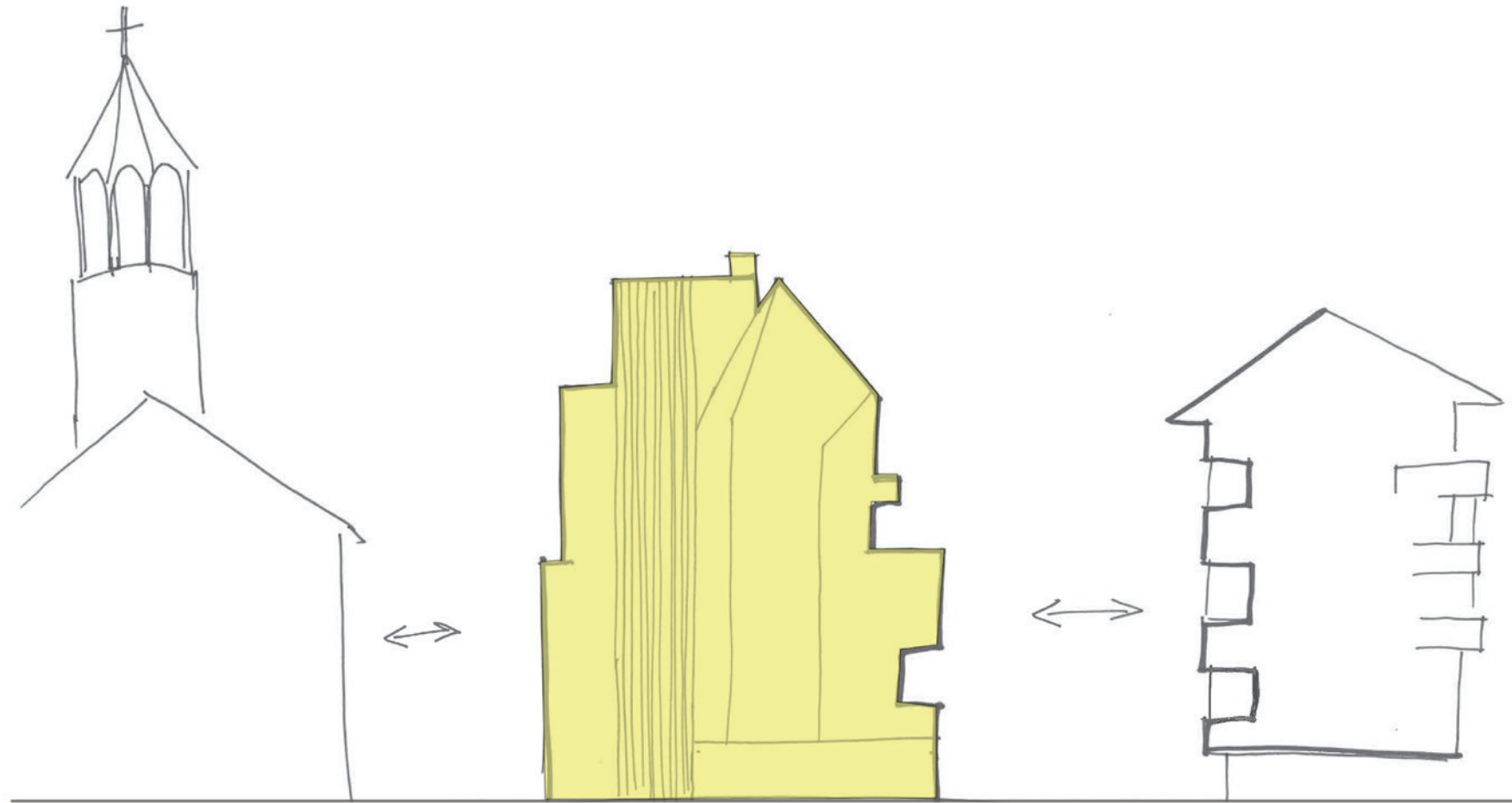
SITE PLAN





# KA11

RESIDENTIAL BUILDING

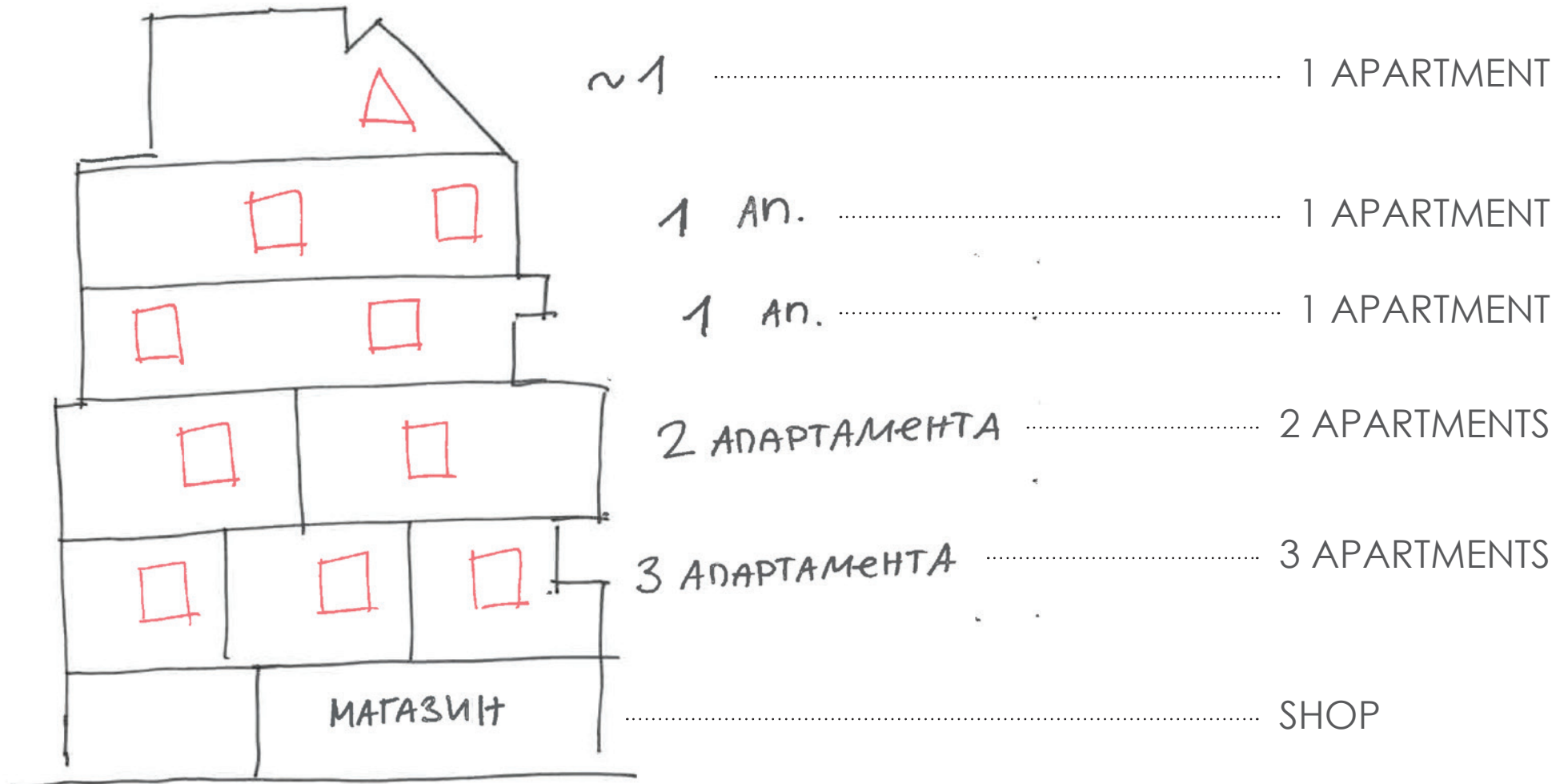


The diverse surroundings, ranging from intimate residential buildings to high-rise developments, posed a unique challenge in integrating the new project within this evolving cityscape. The design approach prioritizes contextual sensitivity while asserting the building's own contemporary identity.



# KA11

RESIDENTIAL BUILDING







# KA11

## RESIDENTIAL BUILDING

The primary design challenge was to develop a refined architectural language that responds to the dynamic urban context while maintaining an intimate residential scale.

The titanium-zinc facade plays a key role in this dialogue, merging contemporary aesthetics with historical references to create a striking visual presence.

Inspired by the nearby church, the titanium-zinc cladding features irregular openings that generate a structured yet organic composition.





# KA11

## RESIDENTIAL BUILDING

The use of two distinct tones in the material enhances the building's dynamic appearance, with the upper section presenting a more fragmented pattern that casts subtle variations of gray.

Highly malleable and durable, titanium-zinc was chosen for both its aesthetic qualities and longevity.

The material's interplay with natural light further accentuates the depth and texture of the facade, allowing the building to evolve visually throughout the day.





# KA11

RESIDENTIAL BUILDING

KA11 reimagines urban living through eight custom-designed apartments.





# KA11

## RESIDENTIAL BUILDING

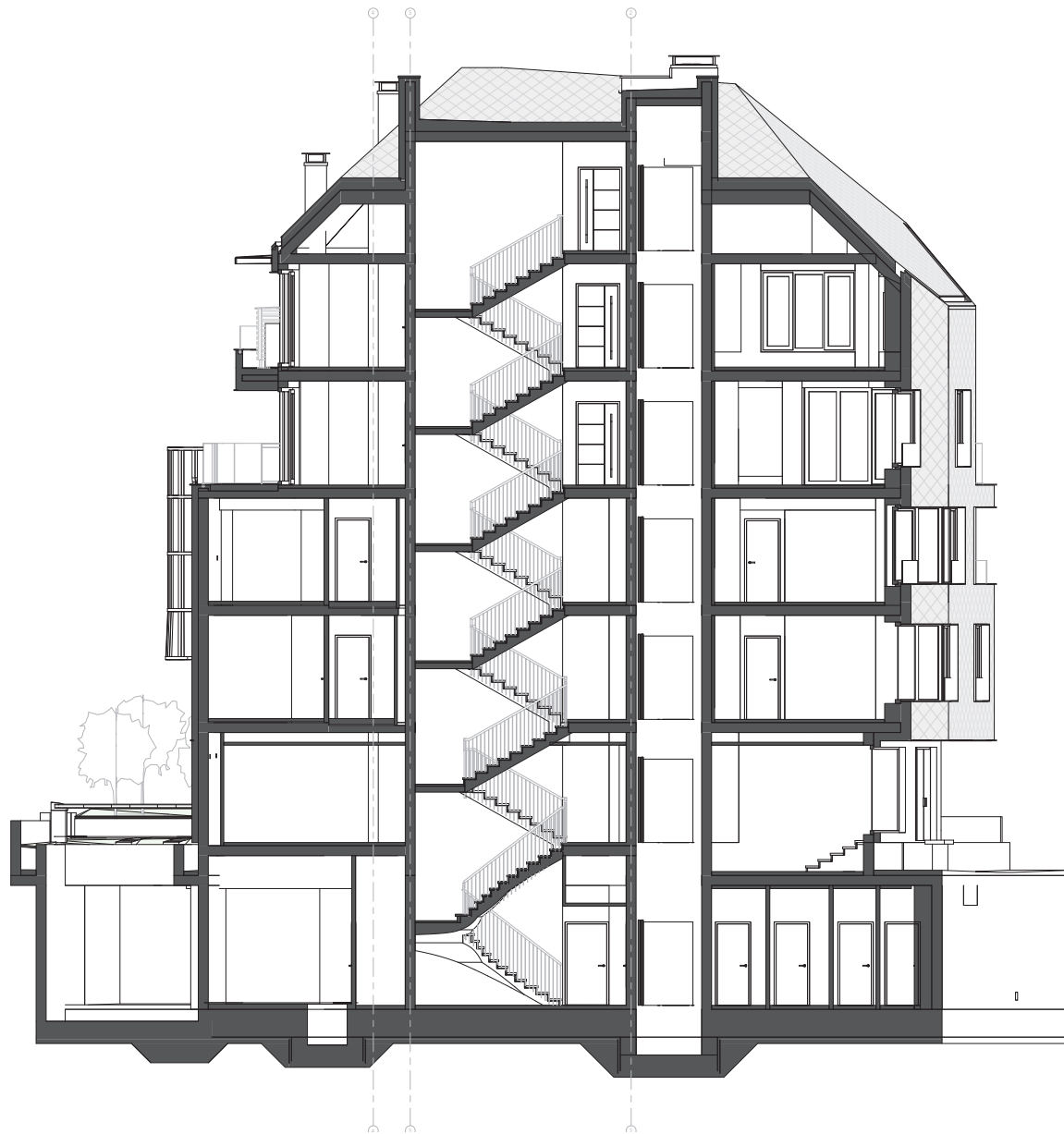
Moving beyond conventional layouts, each residence offers a personalized spatial experience tailored to the evolving needs and lifestyles of its inhabitants.

The interiors emphasize openness, natural light, and material quality, with large windows framing views of the surrounding cityscape. Thoughtful spatial planning ensures fluidity between living areas, while high-end finishes contribute to a refined yet warm atmosphere.



# KA11

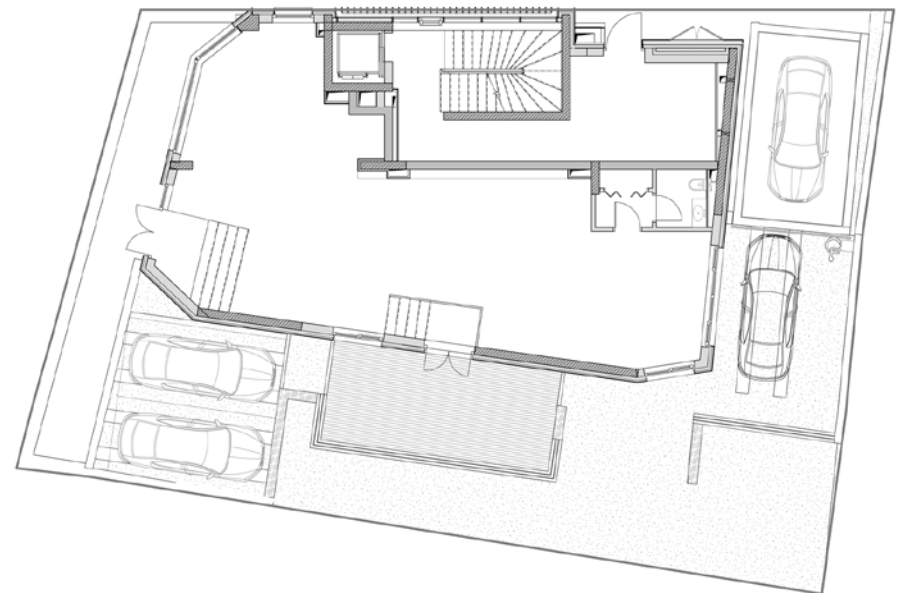
SECTION





# KA11

FLOOR PLAN  
LEVEL 1

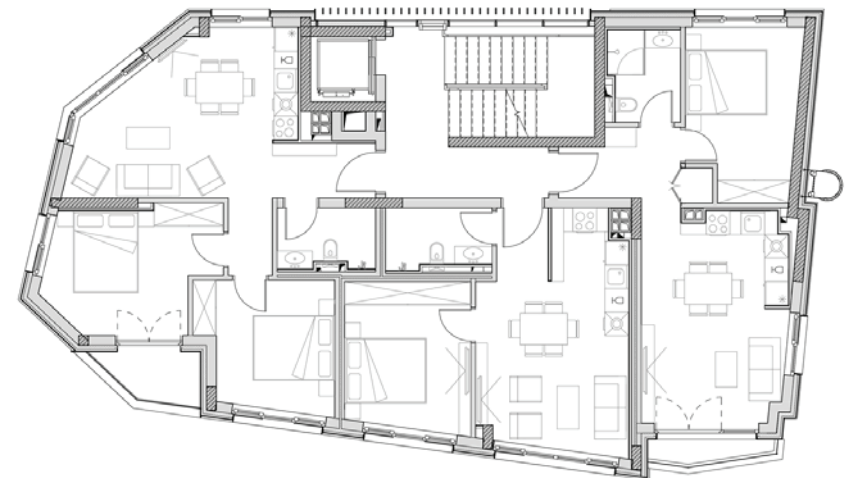






# KA11

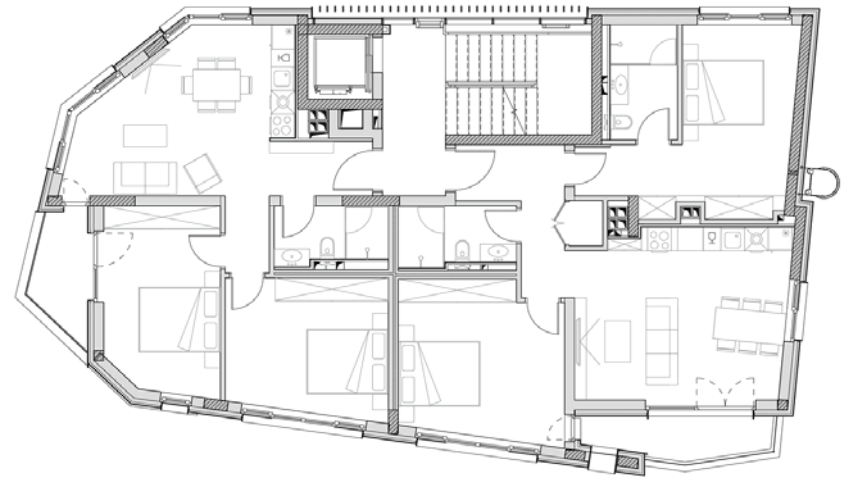
FLOOR PLAN  
LEVEL 2





# KA11

FLOOR PLAN  
LEVEL 3

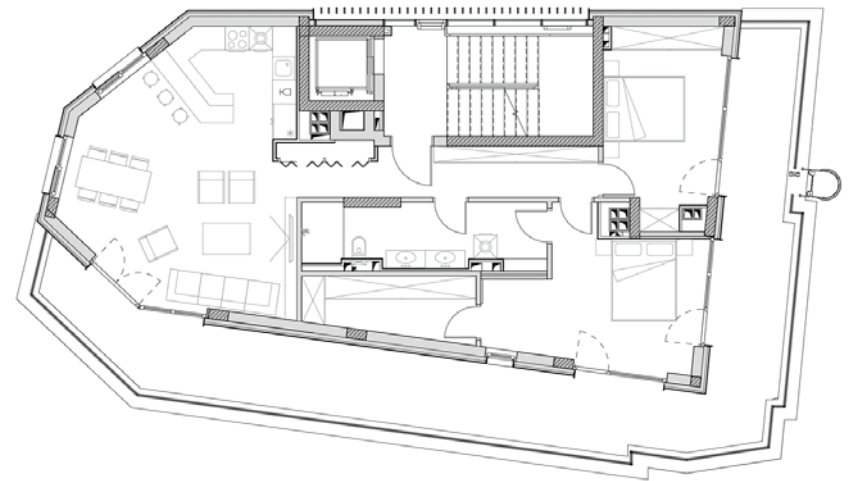






# KA11

FLOOR PLAN  
LEVEL 4

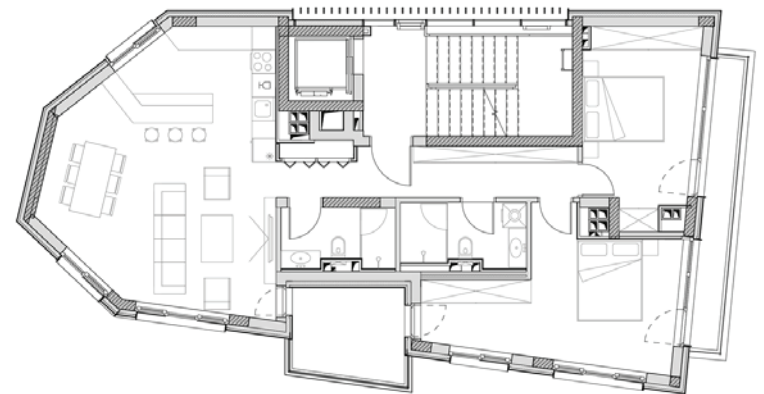






# KA11

FLOOR PLAN  
LEVEL 5

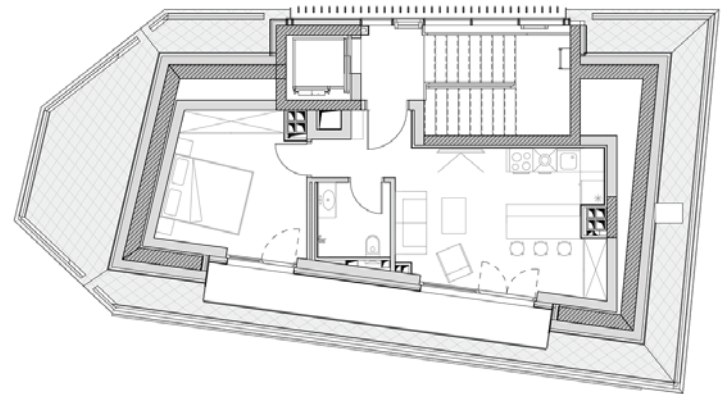






# KA11

FLOOR PLAN  
LEVEL 6







**KA11**  
RESIDENTIAL BUILDING





**KA11**  
RESIDENTIAL BUILDING





**KA11**  
RESIDENTIAL BUILDING