

HEARTWARMING APARTMENT

Location: Romania, Bucharest, district 4
Area: 156.87 sqm
Design initiation date: 15.04.2024
Construction completion date: 20.11.2024



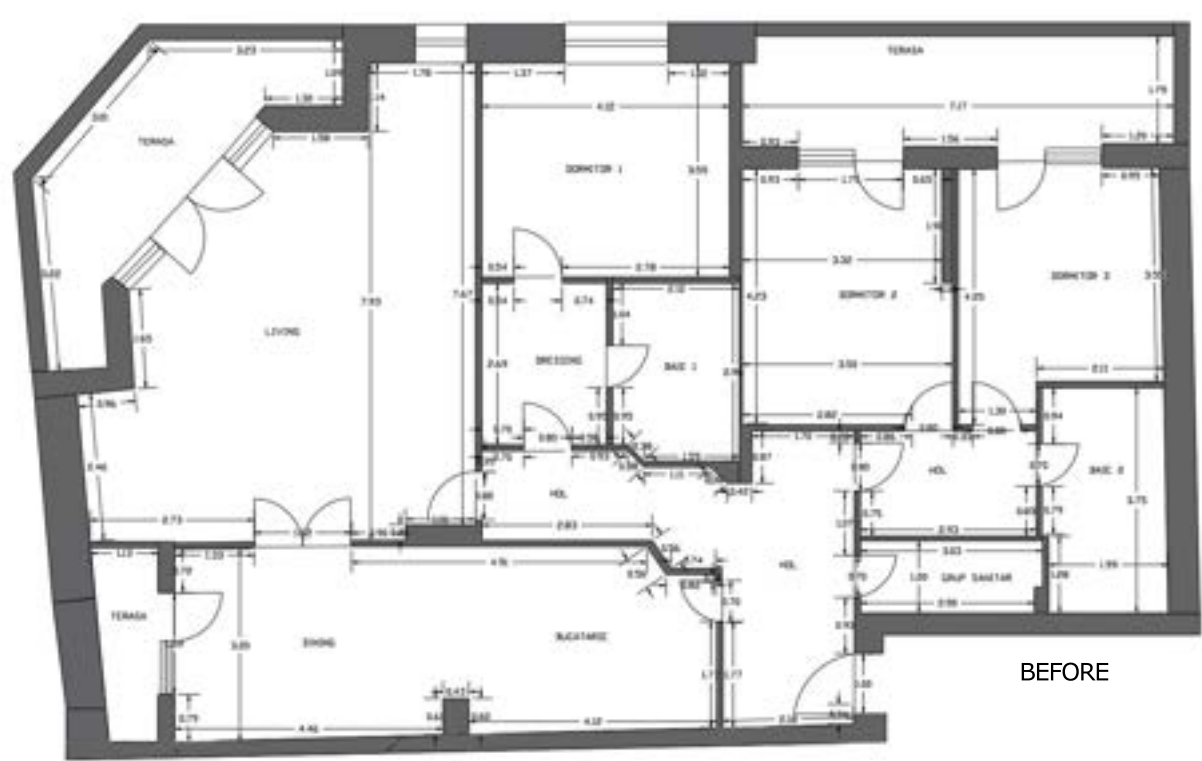
The apartment underwent a complete reconfiguration, departing from the fragmented, corridor-heavy layout of the original plan. The new design strategically reorganizes the space to support fluid circulation, zoned privacy, and generous common areas.

Walls were rethought and repositioned to eliminate unnecessary partitions and to open up the core of the home. The kitchen, dining, and living areas are now integrated into a cohesive open-plan layout, naturally connected to the terraces and outdoor views. Bedrooms were redistributed to ensure privacy and balanced proportions, each now benefiting from better light orientation and access to storage and bathrooms.

Two compact but fully functional bathrooms were redesigned to serve the family efficiently, while custom-built furniture and integrated storage were used throughout to optimize every square meter.

This transformation not only improved spatial logic and comfort but brought architectural clarity and identity to a previously generic layout — proving the power of design to reshape everyday life.

Here are some images with the initial state of the apartment.



BEFORE



AFTER



This apartment project explores a refined balance between calm, structure, and material richness. The design proposes a coherent spatial identity built through a palette of warm neutrals, muted colors, tactile finishes, and precise detailing.

The clients are a young couple with a teenage daughter who envisioned a home that would reflect their vibrant yet relaxed lifestyle — a warm, inviting and colorful apartment with generous, well-organized spaces.





The entry hallway sets the tone with custom millwork, rhythmic fluted wood, and integrated storage solutions that maximize functionality while maintaining visual clarity. The use of blue-grey tones alongside natural wood creates a serene yet grounded first impression.



Moving into the open living and kitchen area, the design emphasizes a continuous flow between functions. The kitchen features a composition of matte surfaces in terracotta and beige, complemented by minimalist black accents and a softly rounded island that doubles as a breakfast bar. Textured vertical elements act as subtle space dividers, providing rhythm and intimacy without visual clutter.



The dining area is anchored by a custom mural and an open shelving system suspended on a black steel frame, blending storage and decorative function. The adjacent living room is marked by a playful modular sofa in deep rust, set against a subtly graphic wall cladding that adds depth and geometric order. Lighting fixtures throughout the space are sculptural but understated, reinforcing the apartment's soft modernist tone.



The bedrooms and bathrooms continue the same principles of material coherence and functionality. Wardrobes are custom-integrated, and design gestures like arched mirrors or grooved cabinet fronts bring visual interest while maintaining a clean atmosphere. The bathrooms mix terrazzo, vertical wood textures, and pastel tiles, creating tactile and calming environments for daily rituals.

This apartment is not about visual spectacle, but about harmony, comfort, and coherence — a space where materials, light, and geometry quietly support the rhythm of everyday life.

