

HOUSE OF THREE

Location: Romania, Jud. Ilfov, Com. Snagov

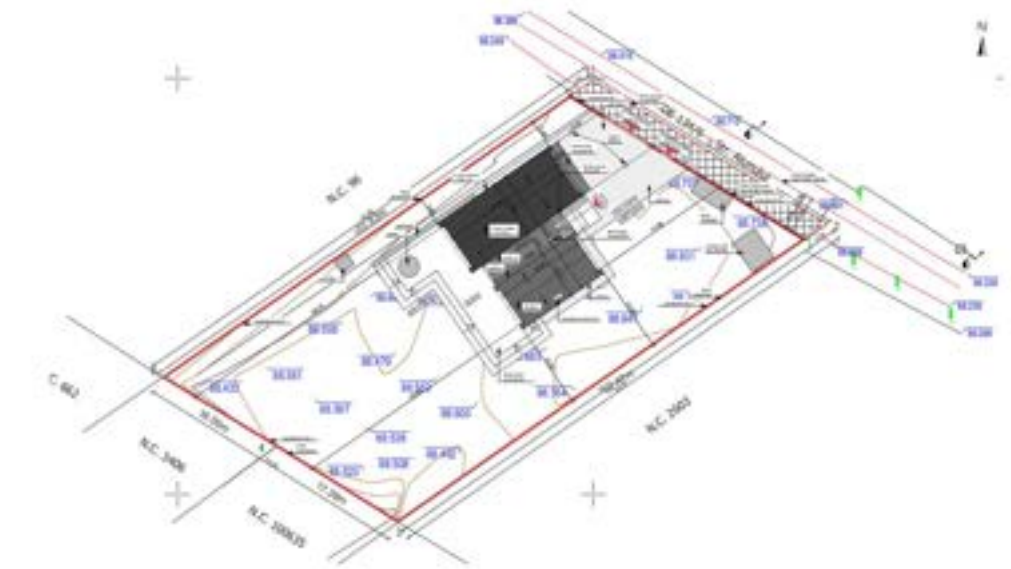
Area: 333.39 sqm

Design initiation date: 31.08.2021

Construction completion date: 22.08.2023



From the perspective of location and site characteristics, the project is situated in an area lacking significant architectural context, on a generous plot that presents no major constraints. This allowed for a concept developed with a high degree of freedom, guided primarily by the surrounding natural landscape — including the nearby lake and forested areas — as well as by key aspects of contemporary living: spatial orientation and organization, client lifestyle and needs, natural lighting, thermal comfort, ventilation, and other essential details that collectively form the foundational layer of any architectural project.



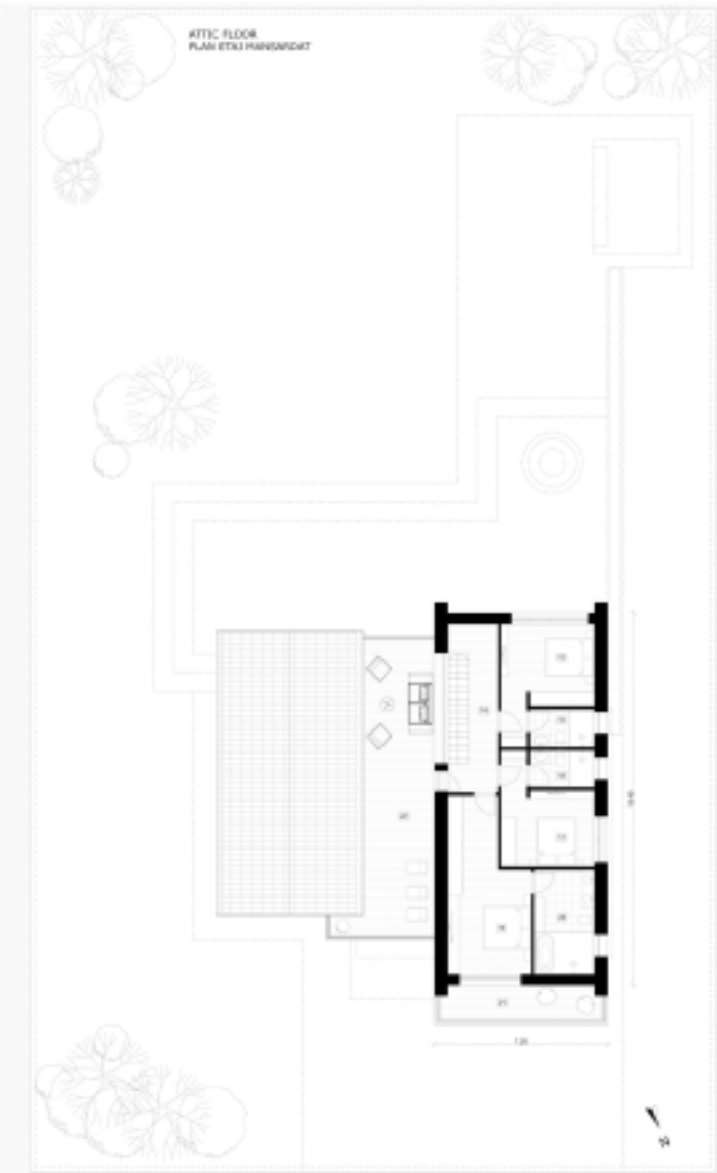
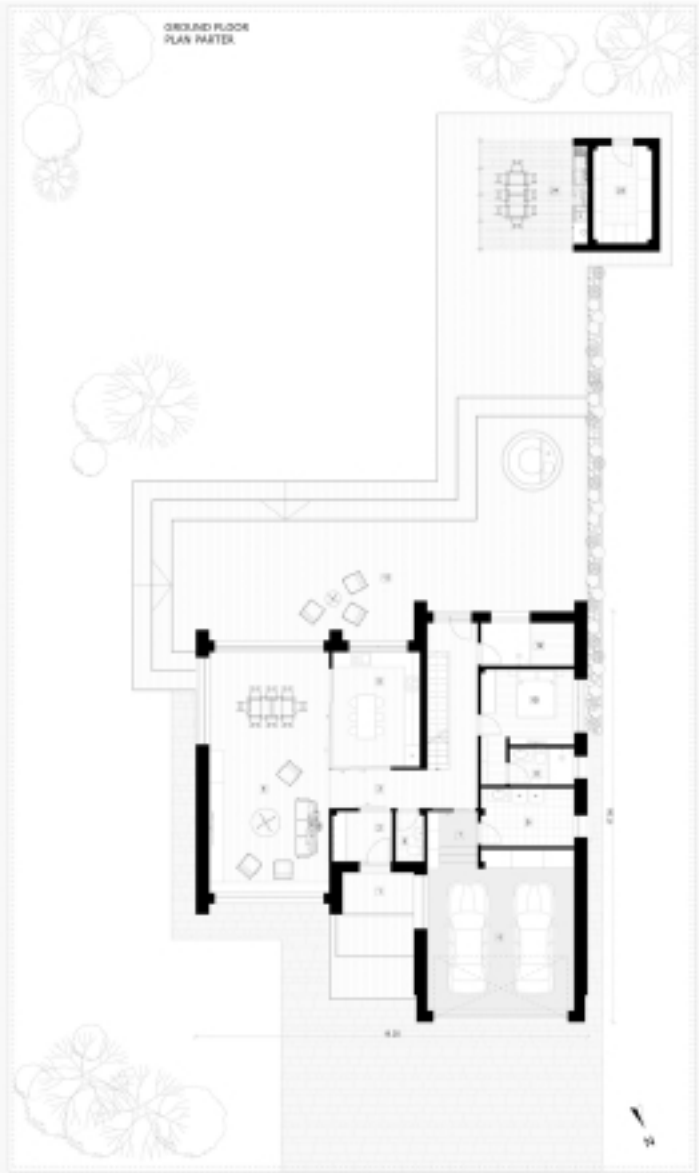
Labels and areas:

- Ground floor
- 1.Entry terrace – 5.22 sqm
 - 2.Entry hall – 5.22 sqm
 - 3.Hall & staircase – 22.65 sqm
 - 4.Living room + dining – 50.00 sqm
 - 5.Kitchen – 17.39 sqm
 - 6.Bathroom – 2.50 sqm

- 7.Sas – 3.12 sqm
- 8.Garrage – 39.76 sqm
- 9.Technical & washing room – 9.42 sqm
- 10.Bedroom – 14.04 sqm
- 11.Bathroom – 4.22 sqm
- 12.Sauna & shower – 6.96 sqm
- 13.Loisir terrace – 96.74 sqm

- Attic
- 14.Hall – 10.54 sqm
 - 15.Bedroom – 15.14 sqm
 - 16.Bathroom – 4.22 sqm
 - 17.Bedroom – 14.15 sqm
 - 18.Bathroom – 4.22 sqm

- 19.Bedroom – 21.64 sqm
 - 20.Bathroom – 10.87 sqm
 - 21.Loisir terrace – 9.99 sqm
 - 22.Loisir terrace – 38.33 sqm
- Total usable area = 253.00 sqm
Total built area = 333.39 sqm



The design process unfolded in tandem with the personal evolution of the clients, who married during the planning phase and welcomed their first child during construction. This organic alignment between architecture and life trajectory deeply influenced the project's development. Originally envisioned as a composition of three distinct volumes — the Day House, the Night House, and the Outdoor House — the scheme prioritized flexibility and adaptability. While the Outdoor House, a semi-independent utility and leisure space, has been temporarily postponed, the core idea of modular and interconnected zones remains fully intact.

Here, the initial rendering of the project is shown at the bottom of the page, while the photograph of the completed construction is displayed at the top.

There are still various tasks to be completed — furnishing certain spaces, providing shading for the terrace, and finishing specific rooms. However, with the arrival of a new family member, the clients' priorities have understandably shifted.



The Day House emerges as the heart of the home, articulated around a generous open-plan layout that seamlessly integrates living and dining areas, with expansive glazing that opens toward the garden and landscape. The connection to the kitchen, situated between the Day and Night volumes, is mediated by full-height sliding glass partitions, enabling spatial continuity and fluid transitions. This central axis between indoor and outdoor life fosters a lived experience that is both open and protected — immersed in landscape yet functionally grounded.





The Night House accommodates the more private functions of the home, including the bedrooms, strategically oriented westward to capture the warm light of sunset and offer views toward the lake and forest. These interior spaces are enhanced by a serene material palette and refined detailing — oak flooring, bespoke wood cabinetry, and carefully integrated lighting — which together create a sense of understated luxury and calm.



Circulation through the house is intentionally choreographed. The staircase, with its minimalist cantilevered oak treads and vertical steel balustrade, becomes a sculptural element at the heart of the home. A glazed skylight above the upper corridor brings daylight deep into the interior, reinforcing the concept of openness and connection with the sky.





The living room features a panoramic window set low to the ground, creating a direct visual and spatial relationship with the exterior garden while also functioning as a contemplative seating nook. This attention to proportion and intimacy enhances the overall sense of domesticity and comfort throughout the house.



From the exterior, the architecture presents a clear formal identity: two archetypal pitched volumes clad in brick and framed in dark metal profiles give the house a contemporary yet familiar character. The articulation of material — warm red brick, dark aluminium detailing, and natural wood — achieves a balanced visual composition that resonates with the surrounding rural landscape while asserting a distinct architectural presence.



Ultimately, the project can be understood as a continuous dialogue: between the built and the natural, the private and the shared, the planned and the evolving. It is a home designed not only for today, but to grow and adapt alongside the lives of those who inhabit it.

