

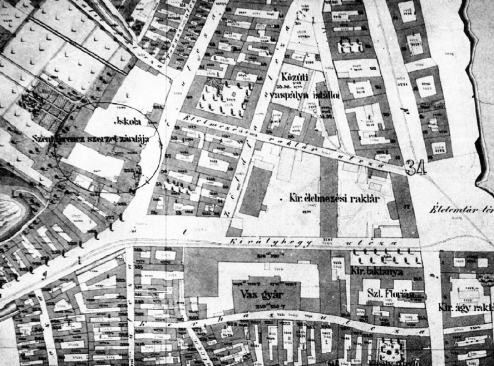


Homework office and residential building

Budapest, Hungary

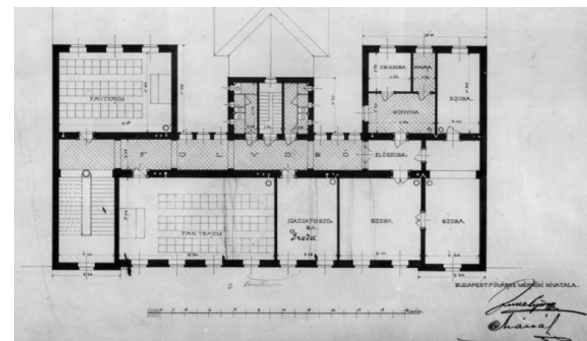


Location	Budapest, Hungary
Total area	7950 m ²
Site area	2224 m ²
Photo	Zsolt Batár and OK2



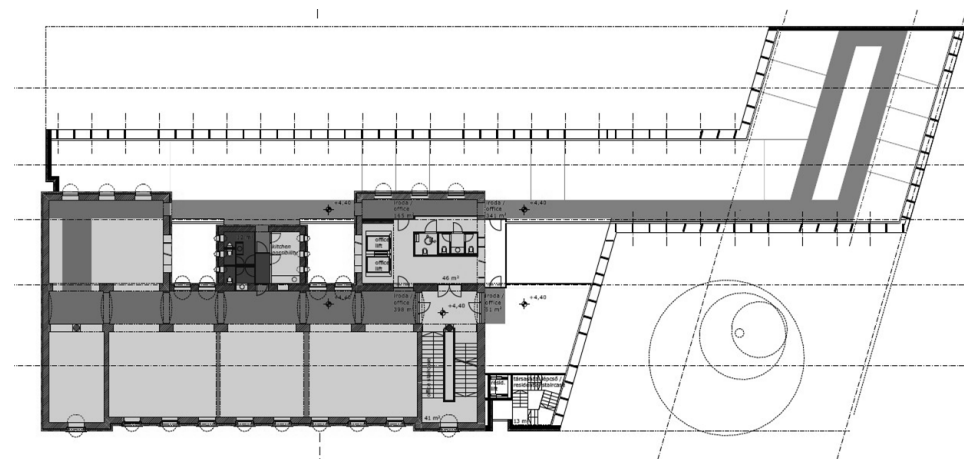
The site is located in the inner district of Buda, surrounded by buildings characterized by plasterwork façades.

Its immediate neighbor is a Baroque church, while a famous Bauhaus building stands just around the next corner.



We aimed to preserve as much of the existing structure as possible, resulting only minimal demolition.

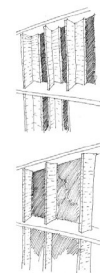
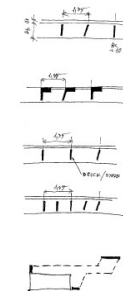
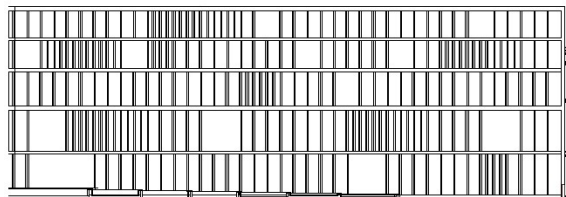
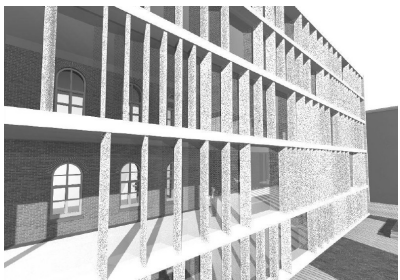
original building



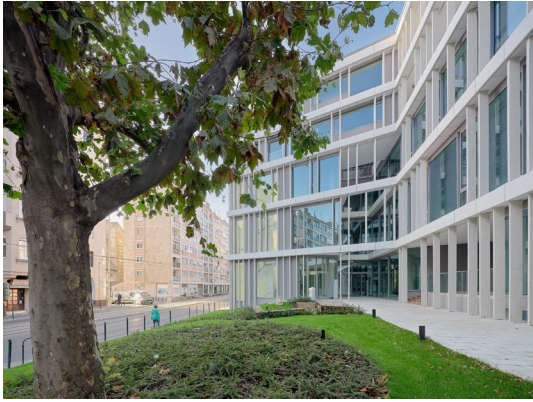
Roof plan sketch with the new part



The new and old volumes — **like an abstract dancing couple** — are connected, creating a new semi-open spatial complex of terraces and green courtyards.



On the double-layered façades, the louvres (lamellae) simultaneously provide a solid façade appearance or visual permeability, depending on our position or the angle of view.



Despite the mixed-use program of residential and office functions, the façade was treated in a unified, abstract manner.



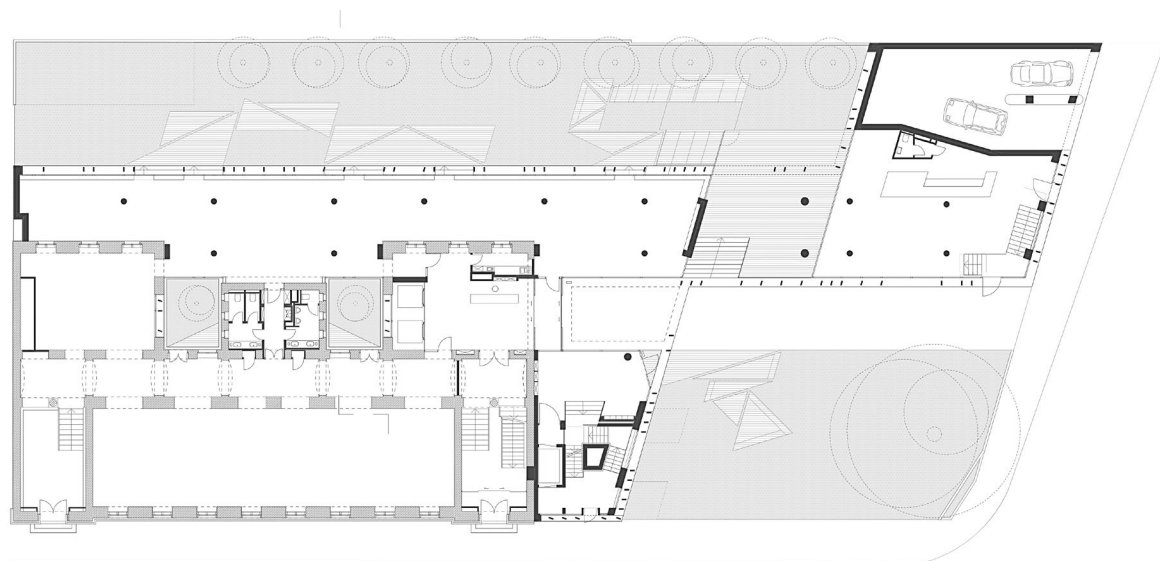
The aim was to create a timeless appearance — a connection across time between the Baroque, Romantic, and Bauhaus-style buildings.



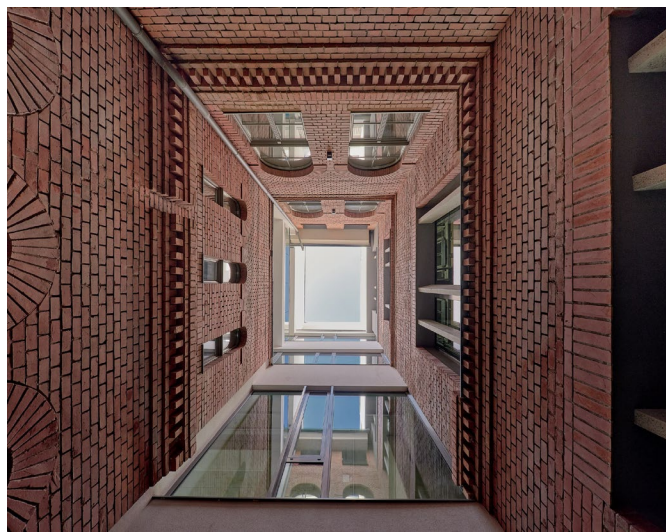




Garage level



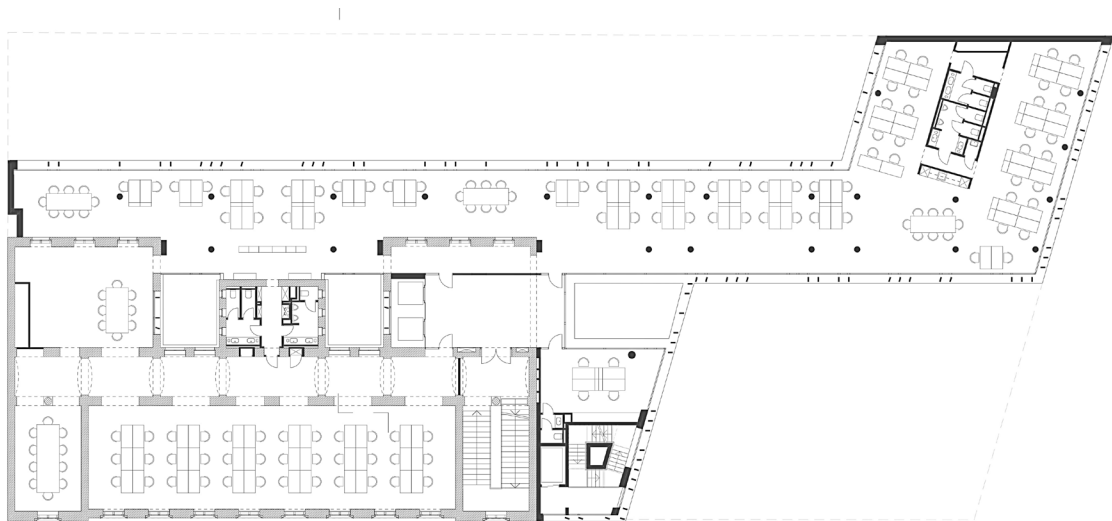
Ground floor



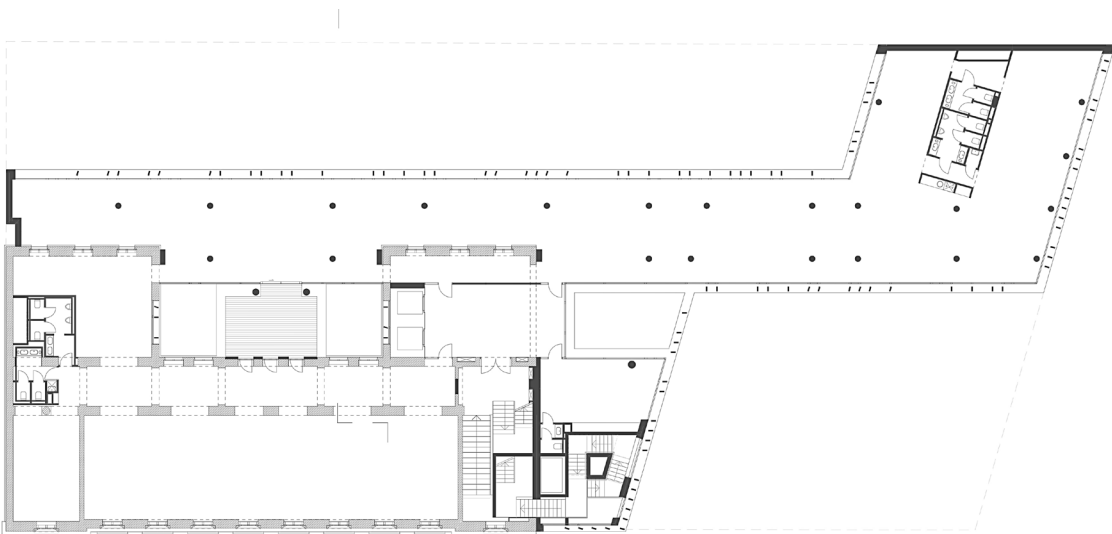
During construction, a **medieval drain** was uncovered, which has been preserved and is visible to everyone on the garage level.



The connection of the new part with the old one along the axis of the main entrance creates exciting spaces, multifunctional courtyards, terraces, and visual links.



1st floor



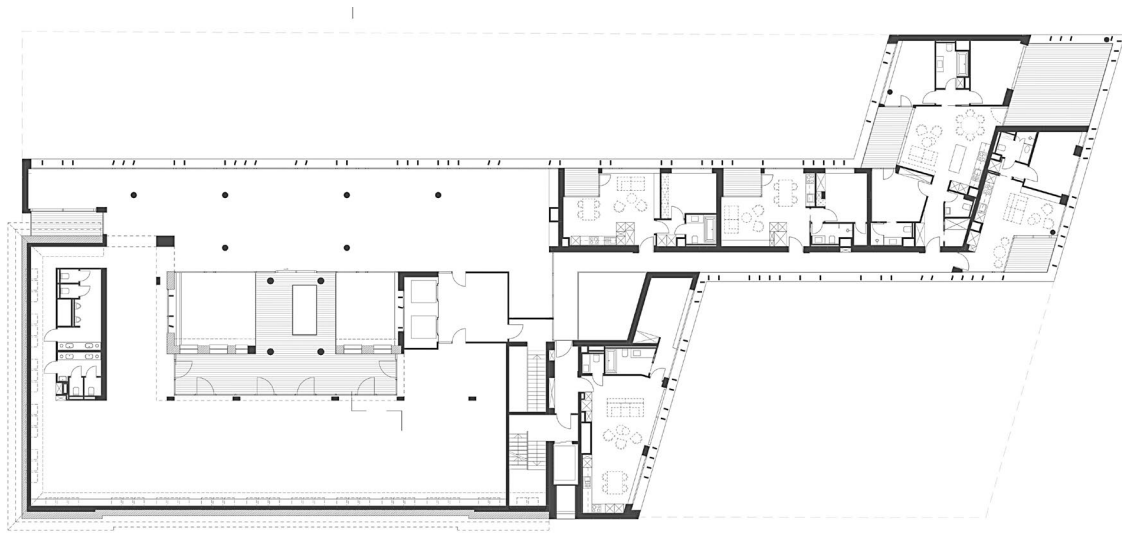
2nd floor



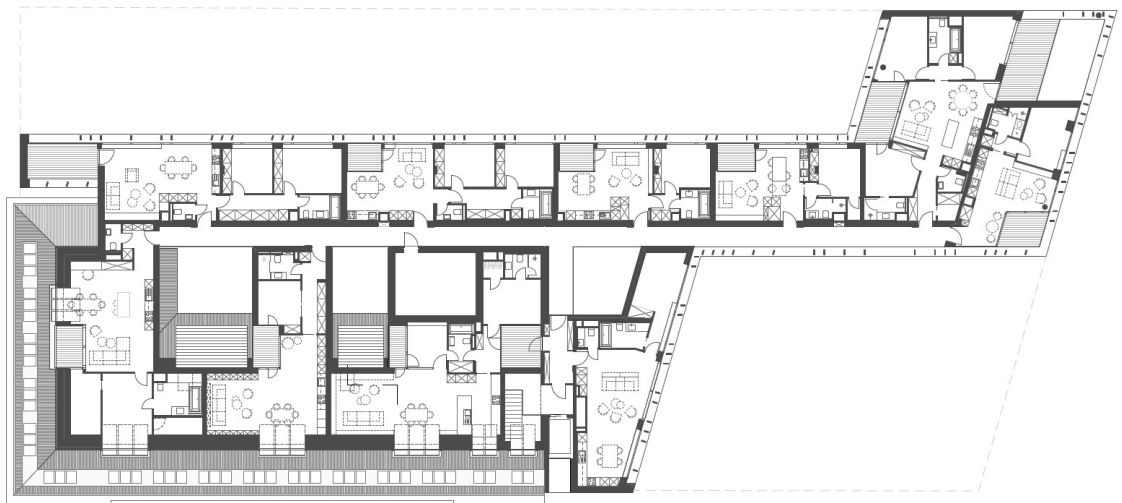
The cornices are composed of homogeneous whitewashed fine concrete elements, while the louvres are polished.

This duality refers to the yellow-red dual coloration of the school building.

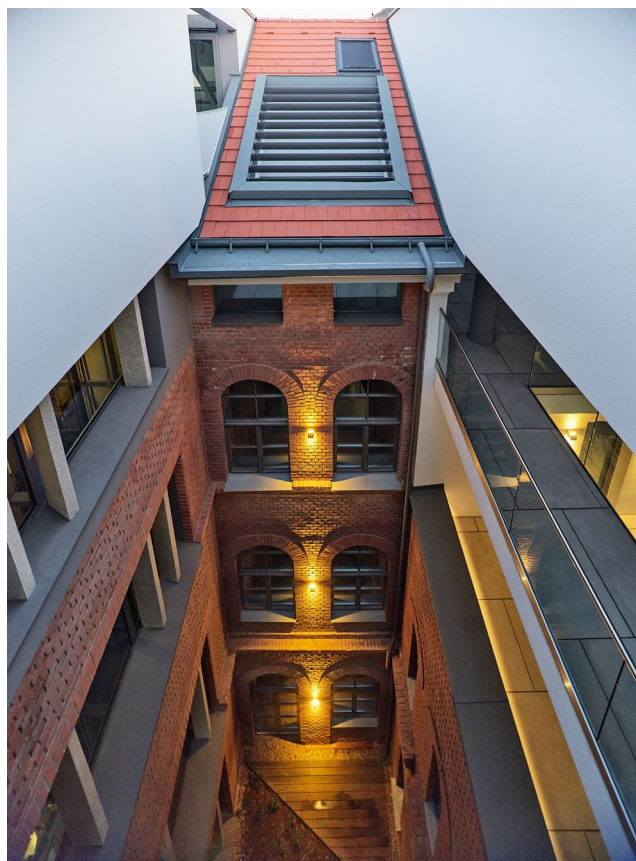




3rd floor



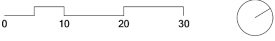
4th floor

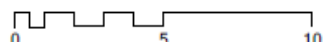
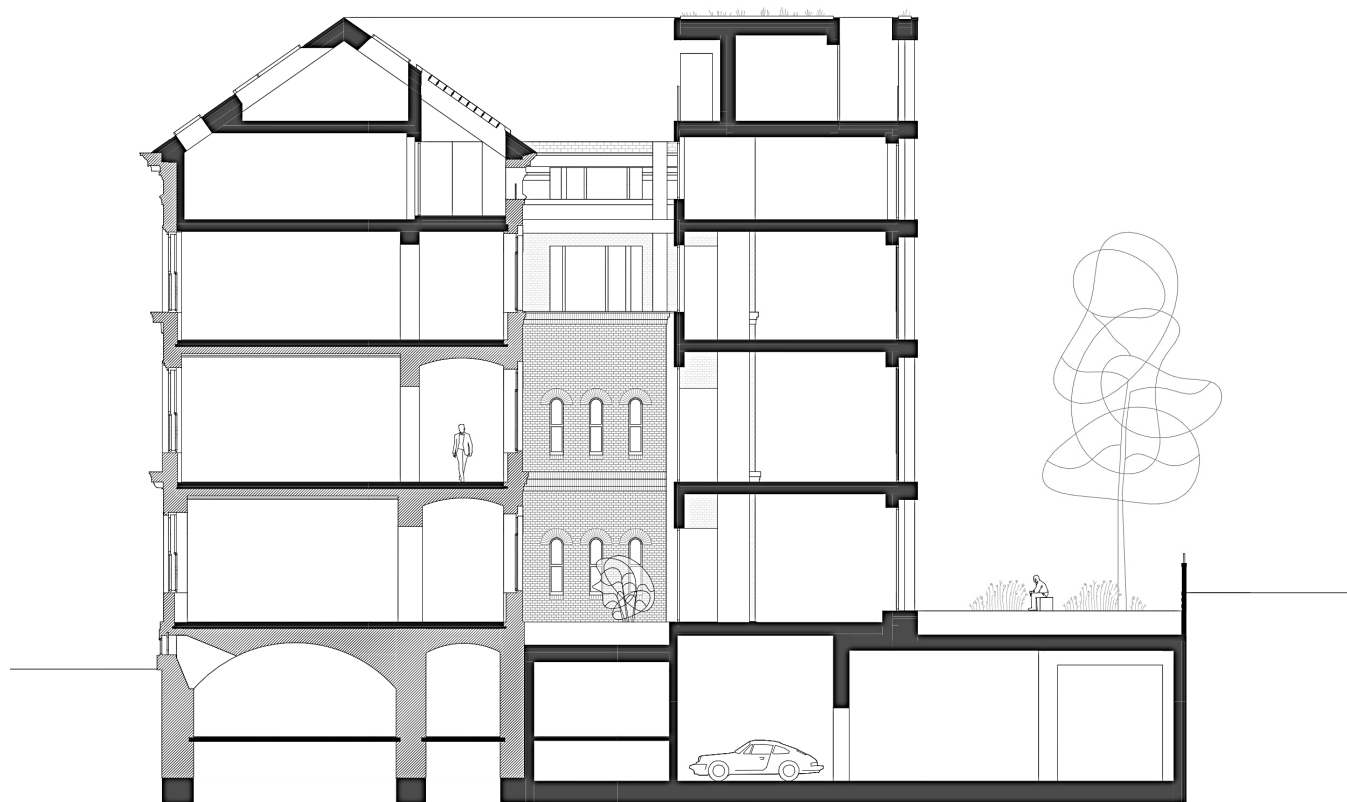






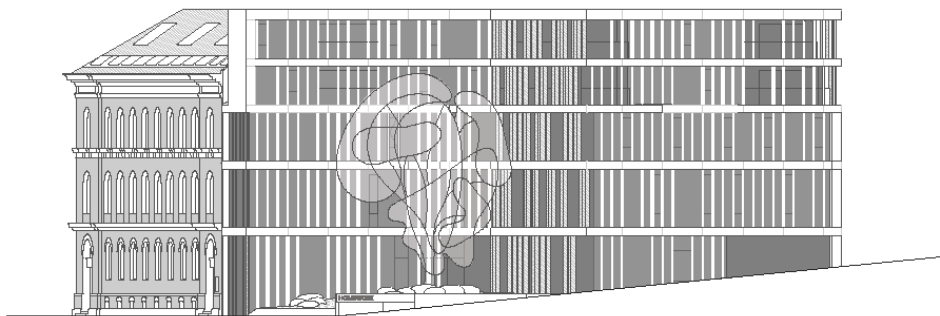
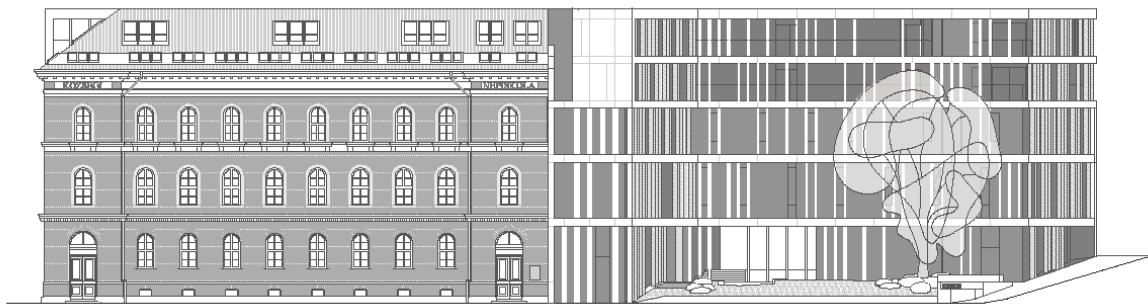
Site plan





Section

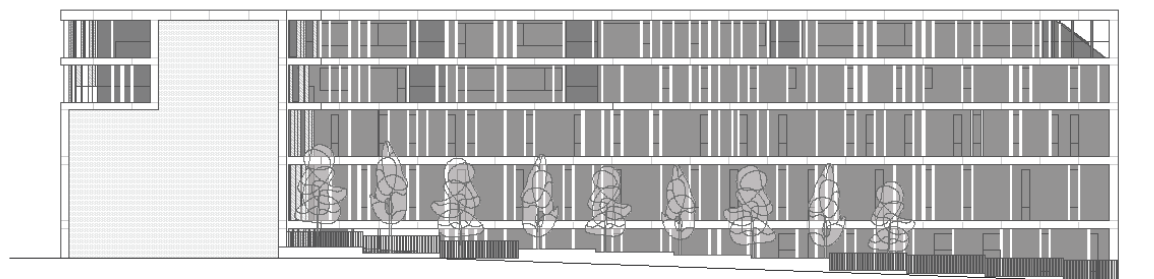




Fronts

Rómer Flóris utcai homlokzat





Nyugati homlokzat



Elevations

