

# Cyprus Chamber of Commerce and Industry (CCCI)



The renovation of the Cyprus Chamber of Commerce and Industry is an important architectural project that blends modern design with respect for the existing structure. The CCCI serves as a key institution for the island's business community, representing various sectors of the economy. It is located outside the Venetian walls, but very close to the centre of Nicosia.

- Modern design and Respect of the Existing structure





FROM OLD TO NEW  
RENOVATION FOR CCCI BUILDING  
**NICOSIA \_ DIVIDED IN 2**

Refurbishment of Cyprus Chamber of Commerce and Industry (CCCI) Building

2.2

CHECK POINT

NICOSIA NEW MUNICIPALITY

LIBERTY MONUMENT

NICOSIA MUNICIPALITY

MINISTRY OF FINANCE

CYPRUS MUSEUM

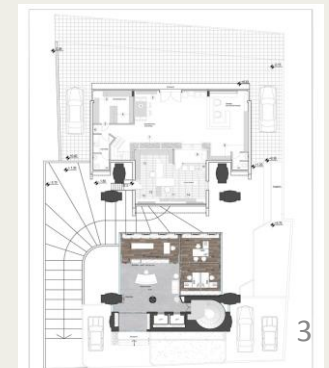
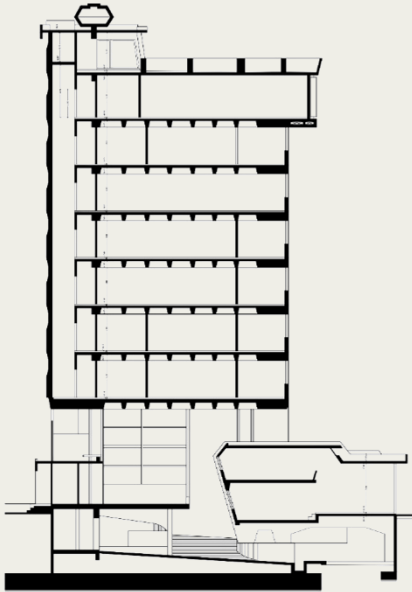




- Modernist Principles

# Cyprus Chamber of Commerce and Industry (CCCI)

The building was originally constructed in 1983. It featured minimalistic design elements, and materials like concrete and glass.



NEW INTO OLD  
CYPRUS CHAMBER OF COMMERCE AND INDUSTRY (CCCI)  
Main Issues\_Pre- Existing Conditions

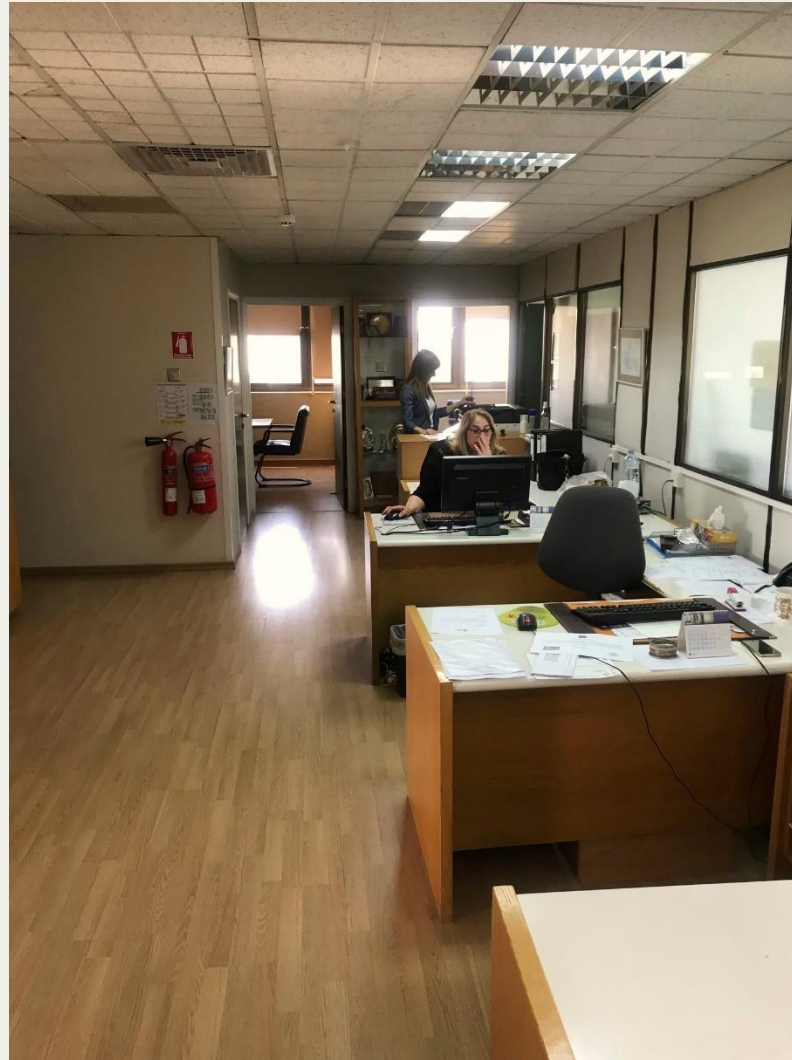
The environment  
appeared less inviting to  
visitors and guests.





## NEW INTO OLD CYPRUS CHAMBER OF COMMERCE AND INDUSTRY (CCCI) Main Issues\_Pre- Existing Conditions

The existing Spaces were impractical for supporting the daily tasks of the chamber.  
The storage spaces were insufficient.



# NEW INTO OLD CYPRUS CHAMBER OF COMMERCE AND INDUSTRY (CCCI) Main Issues\_Pre- Existing Conditions

The placement and type of light seemed inappropriate for a professional work environment.





NEW INTO OLD  
CYPRUS CHAMBER OF COMMERCE AND INDUSTRY (CCCI)  
**Main Issues**\_Pre- Existing Conditions

There was lack of infrastructure to prevent flooding when it was raining.



# NEW INTO OLD

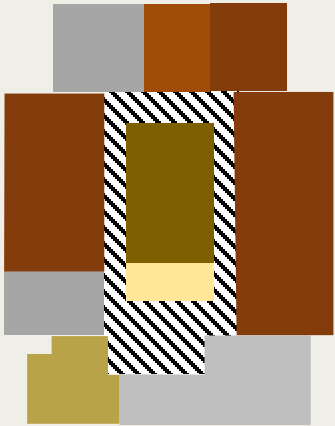
## Cyprus Chamber of Commerce and Industry

### Solutions

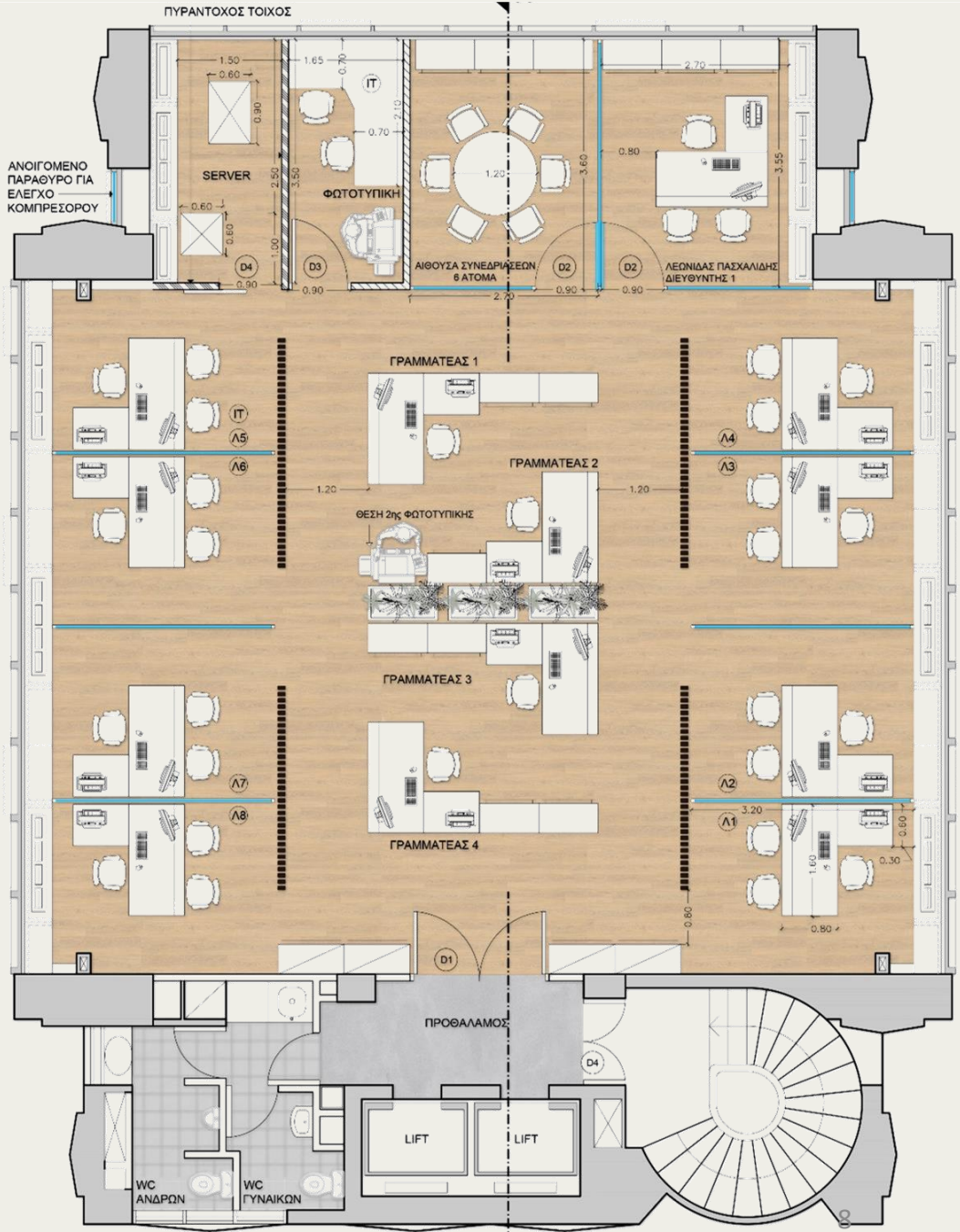
Having three clear zones of:

- working
- waiting/reception
- Meeting room

Supporting the idea of better working environment we implement ergonomic furniture, quiet zones and collaborative areas that targeting to the well-being of the employees



- CIRCULATION
- SANITARY
- RECEPTION
- WAITING AREA
- OFFICES
- CONFERENCE





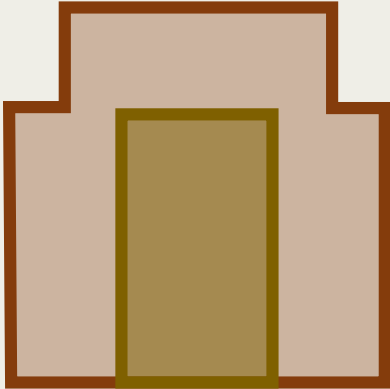
- Clean Layout

# NEW INTO OLD

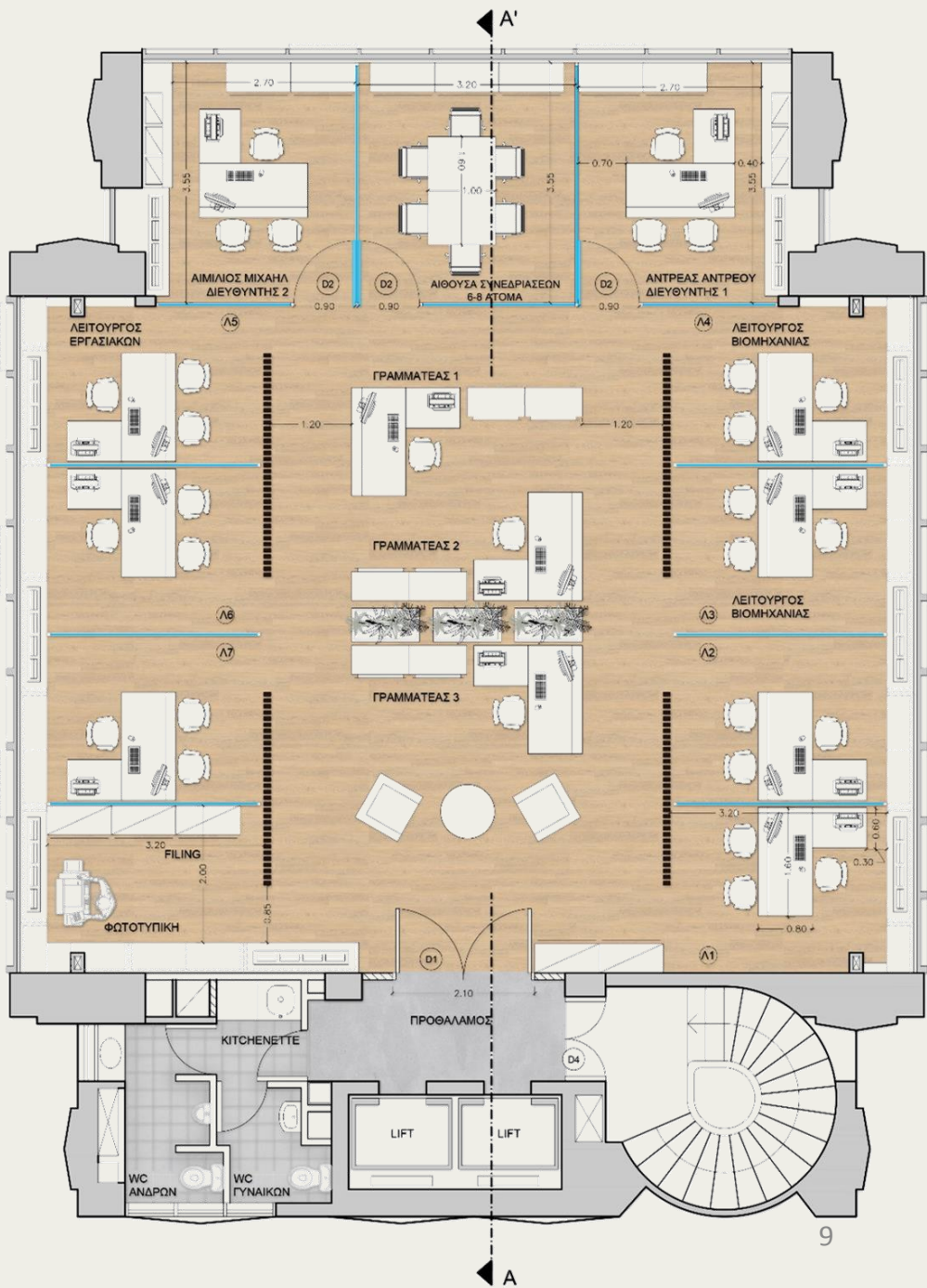
## Cyprus Chamber of Commerce and Industry

### Solutions

We defined areas for specific activities, like collaborative zones, private offices, meeting rooms, and relaxation spaces.



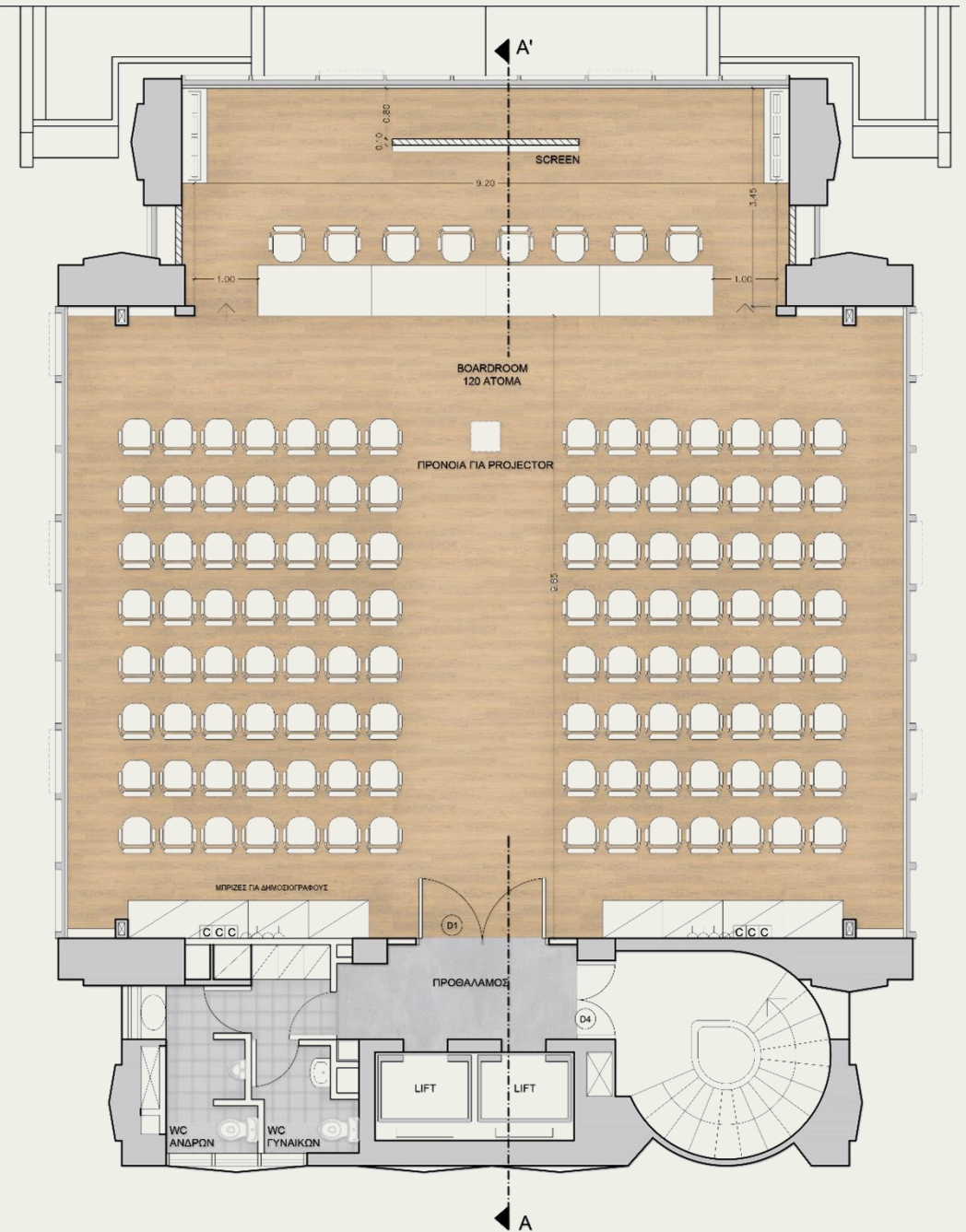
- Clean Layout



- Large rooms for Seminars, Business Meetings and Events

## NEW INTO OLD

### Cyprus Chamber of Commerce and Industry Solutions





- Clean Layout

## NEW INTO OLD Cyprus Chamber of Commerce and Industry Solutions

The separators between common and private areas were a must, with the panels made out of timber fine columns that not only added depth to the space but also helped with the acoustic of the room. Acoustic mineral tiles were used on the ceiling.



- Clean Layout

Common and lounge areas are a part of modern business environment, where employees and visitors can network informally. These areas were designed to reflect the Chamber's role in promoting collaboration among Cyprus businesses people.

## NEW INTO OLD Cyprus Chamber of Commerce and Industry Solutions





- Clean Layout

## NEW INTO OLD Cyprus Chamber of Commerce and Industry Solutions



## NEW INTO OLD

### Cyprus Chamber of Commerce and Industry

#### Solutions

- Greenery at corporate environment

We used integrating greenery into the office spaces by adding indoor plants which not only updated the aesthetic but also improved the air quality, creating a healthier environment.





## NEW INTO OLD

### Cyprus Chamber of Commerce and Industry

#### Solutions

- Division and Natural Light.

The partitions were made out of glass, allowing natural light to penetrate and reach the central part of the building.



## NEW INTO OLD

### Cyprus Chamber of Commerce and Industry

#### Solutions

- Light placement

We chose wooded surfaces for the majority of the furniture and added a pop of color with the chairs at the reception.





## NEW INTO OLD

### Cyprus Chamber of Commerce and Industry

#### Solutions

- Acoustics and interior design.

We chose wooded surfaces for the majority of the furniture and added a pop of color with the chairs at the reception.



- Smart Technology.

Integrating smart technologies for light, climate control, smart desks, wireless charging stations and security systems reduced operational costs, without disturbing the historical charm of the building.

## NEW INTO OLD Cyprus Chamber of Commerce and Industry Solutions





We preserved the building's exterior character and respected the Initial design of the building, by upgrading with energy efficient materials and technology in order to improve both aesthetics and building performance.

The facade, celebrates the structural elements nicely. The new silver aluminium cladding offers a more contemporary aspect to the iconic building, blending the old with the new in a seamlessly way.

We designed an ergonomic work place that was both functional and aesthetically pleasant, spacious and bright, indicative for a professional and important organization such as the Cyprus Chamber of Commerce and Industry.

## NEW INTO OLD

### Cyprus Chamber of Commerce and Industry

#### Solutions

