

Cemacon Bus Station  
Zalau, Romania





## The story

CEMACON Station: where the industrial past meets the dynamic future of a rapidly expanding city!

Located in the heart of the new urban area, this innovative bus station blends seamlessly into the changing landscape, bringing a new level of modernity and energy to the city of Zalău.

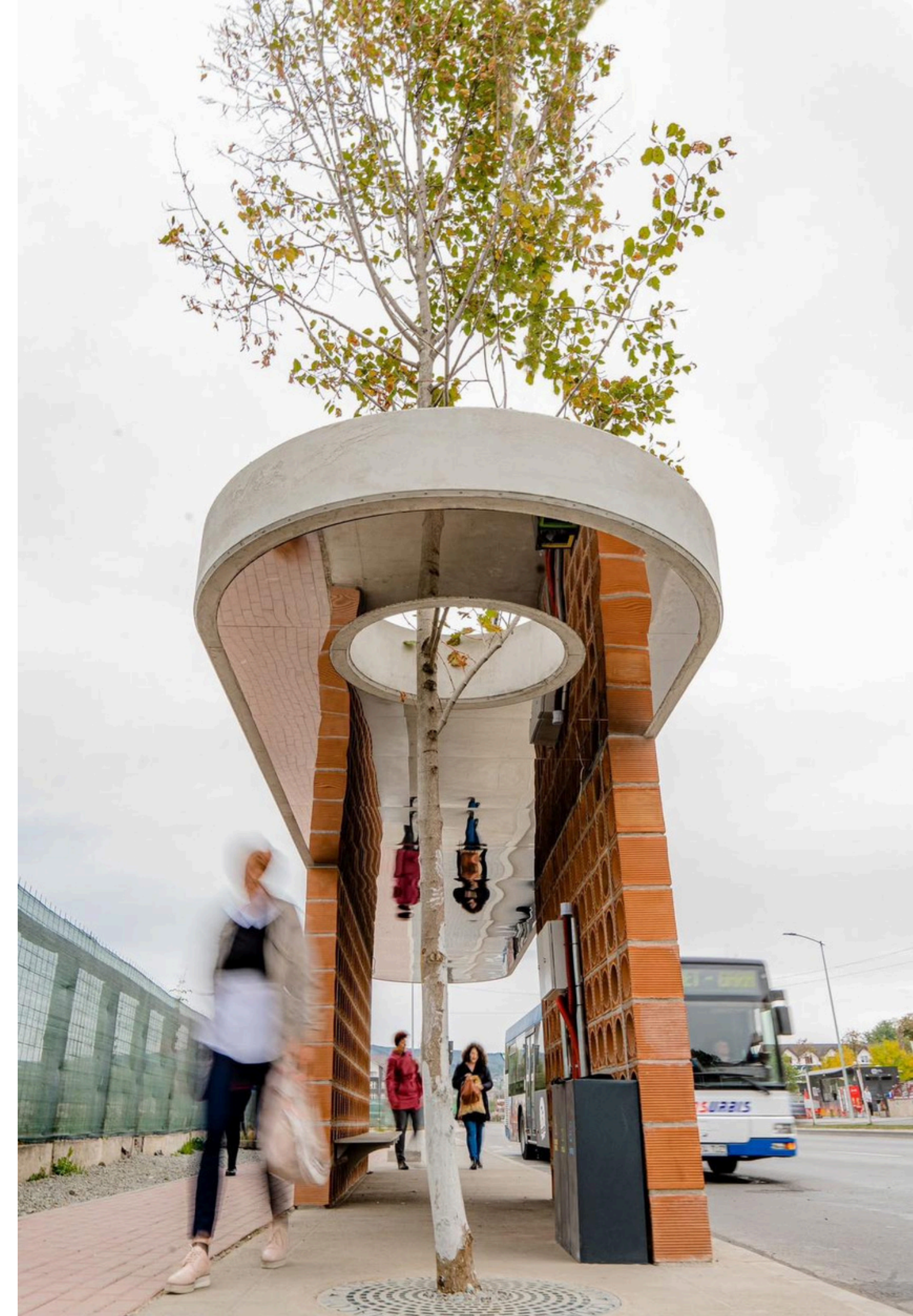
The station's architecture is defined by a dynamic composition of two concrete slabs framing sliding brick walls. Thanks to the transparency of the walls and the fluidity of the concrete slabs, the structure gives the impression of a permeable architectural object in motion.

A remarkable feature of the station is the integration of a tree into its design—a symbol of nature amid the urban landscape—creating a pleasant and distinctive microclimate.

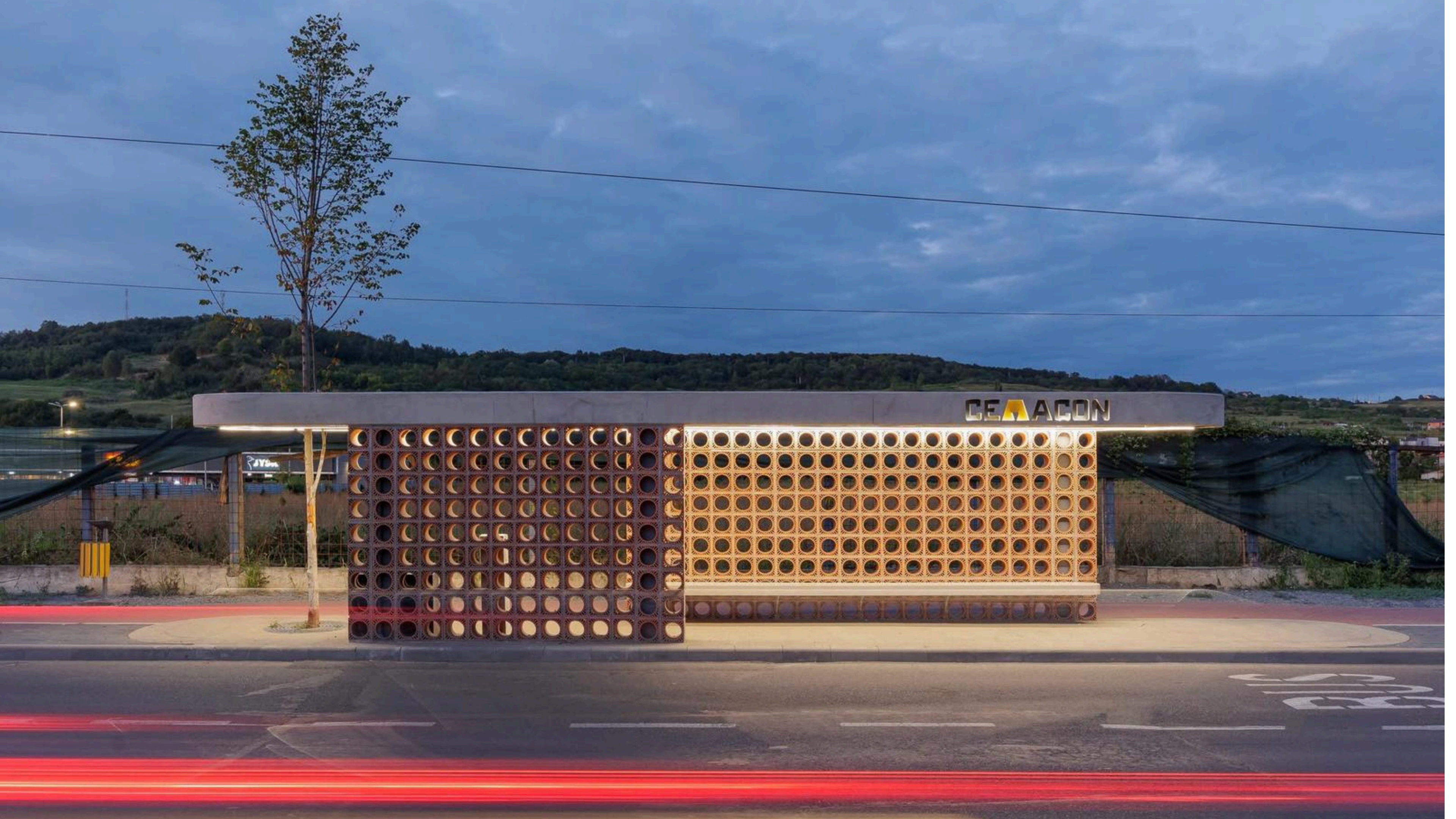
The mirrored ceiling, which highlights the materials and spatial dynamics and glows spectacularly at night, becomes a captivating urban attraction.

This bus station is not just a waiting spot, but a city landmark—an urban oasis.

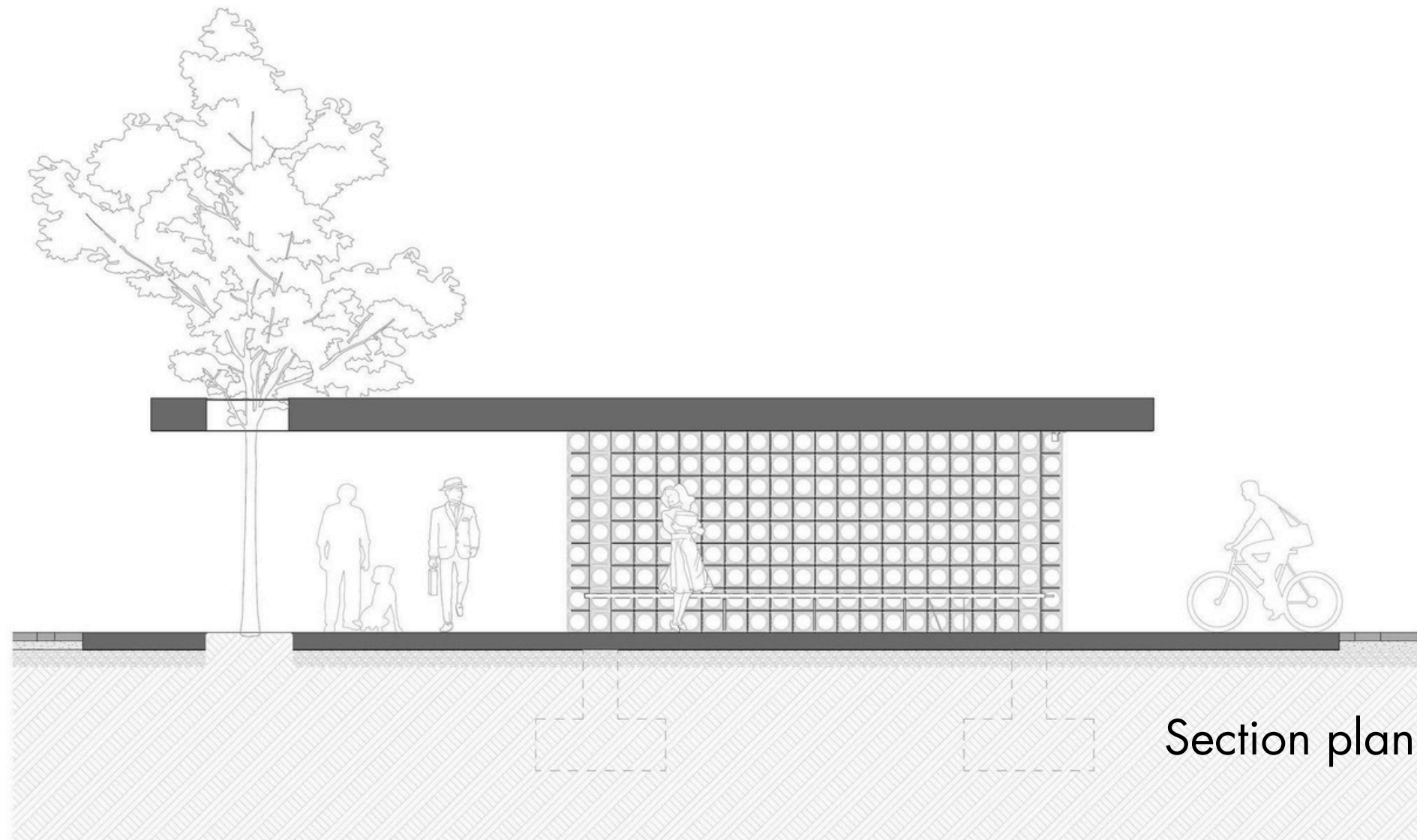
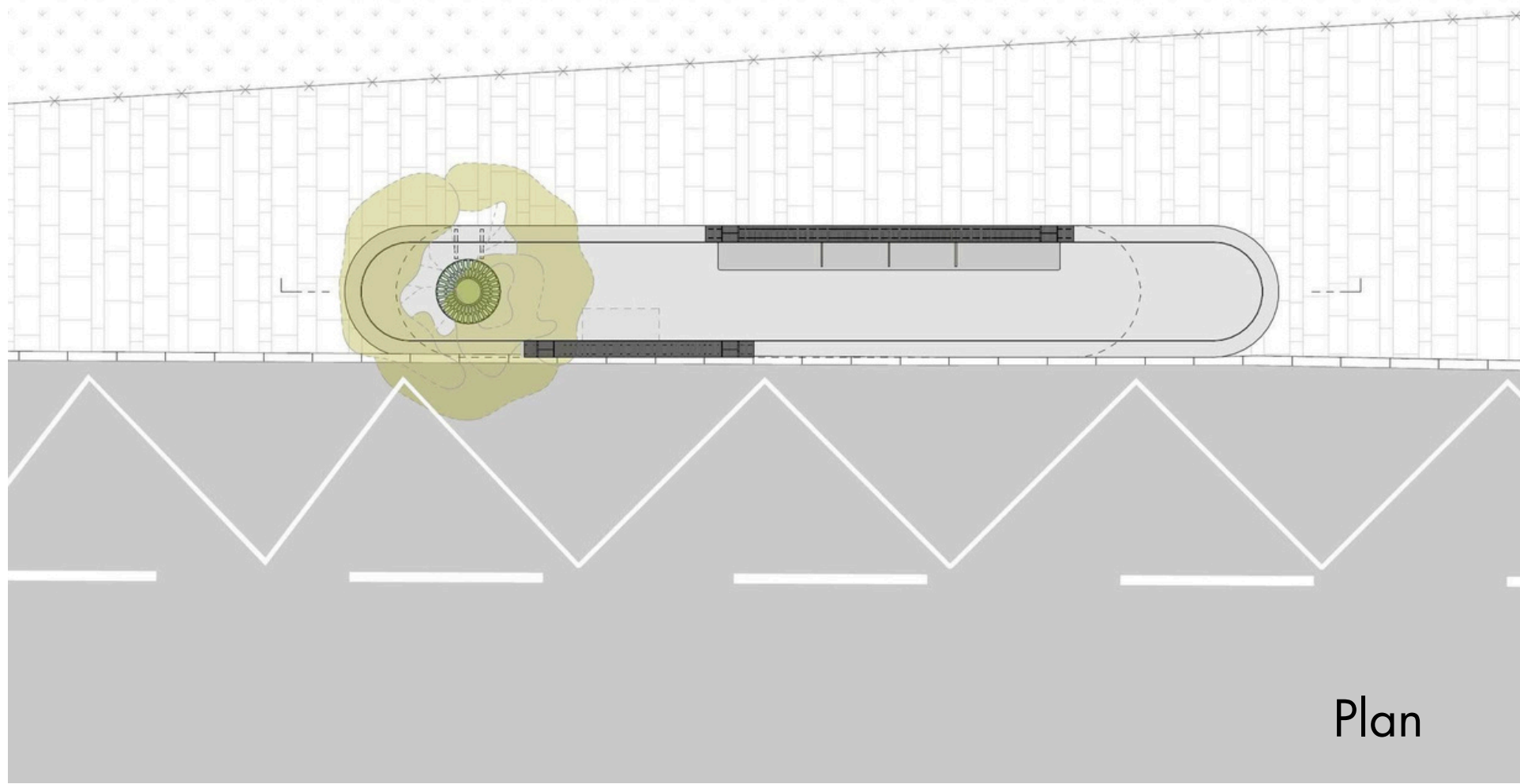
The city is evolving and we are keeping pace with the times.















CEA ACON

JYSK  
D  
DECH  
CCC  
Herbol  
SPORT  
PEPCO  
TAKO  
FASHI  
KFC  
FLAM  
SPA  
WWW.SPART  
TTE

CA

BUS



















Thank you

