

Research and Visitor Center, Ceahlău National Park

This project responds to a complex public brief: the creation of a research and visitor center in the heart of Ceahlău National Park, a Natura 2000 protected area with exceptional ecological and cultural value. Situated on a remote plateau at over 1700 m altitude, the site's natural constraints, limited accessibility, and regulatory restrictions demanded a carefully calibrated architectural response that balances visibility with discretion, function with preservation.

The building integrates a multifaceted program—accommodation, laboratories, conference space, exhibitions, and public areas—within a minimal footprint. The volume is fragmented into nested, low-rise forms that blend into the topography and respect height limits, while green roofs and earth berms anchor the structure to the site, mitigating visual impact and enhancing thermal efficiency.

Despite limited access and environmental constraints, the project maximizes value for investment through prefabrication logic, passive energy strategies, and careful siting. It not only meets but exceeds the brief by proposing a resilient, low-impact architecture that facilitates research, education, and conservation in a unified spatial ecosystem.

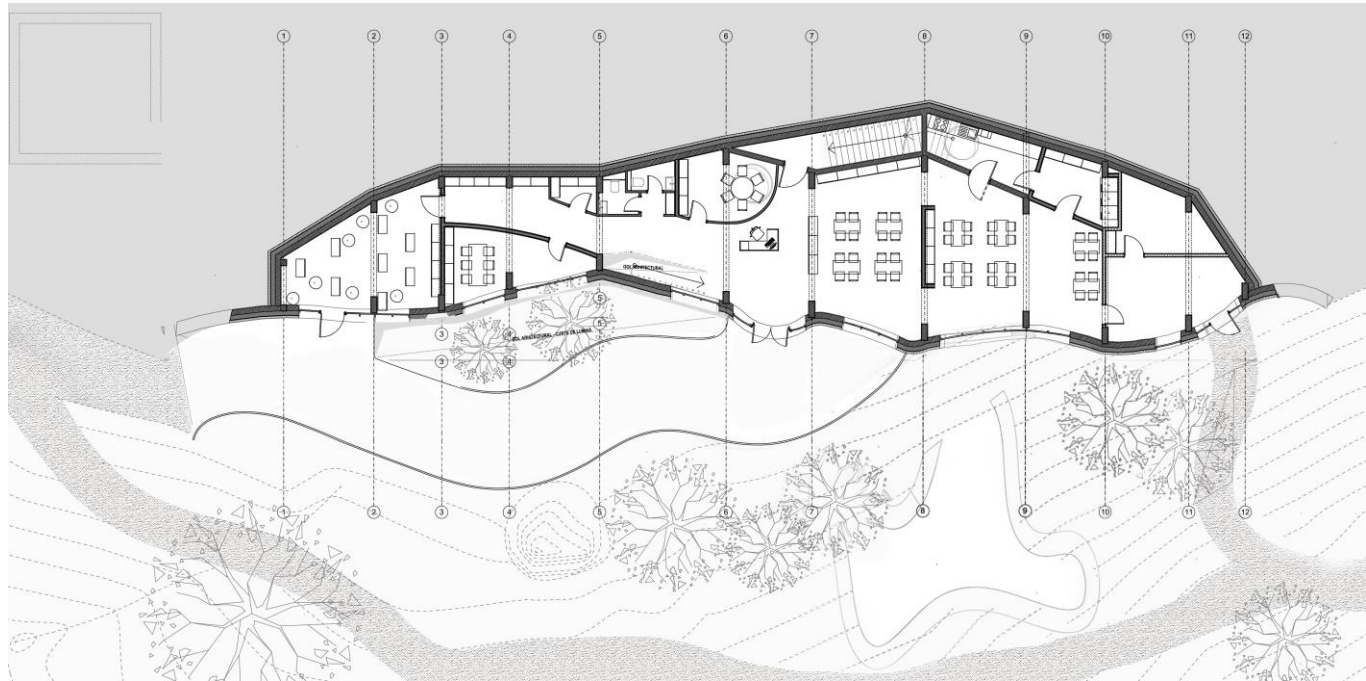
Formally, the project articulates a language of restraint and tactility. Natural materials, embedded thresholds, and calibrated views toward the surrounding massif support a coherent experience at all scales—from the intimate reading room to the panoramic exterior terraces. Every space is designed to stimulate engagement, invite discovery, and foster a connection between human presence and natural processes.

Socially, it establishes a new point of convergence for researchers, rangers, visitors, and local stakeholders, becoming a symbolic and functional nucleus within the park's network of trails and institutions.

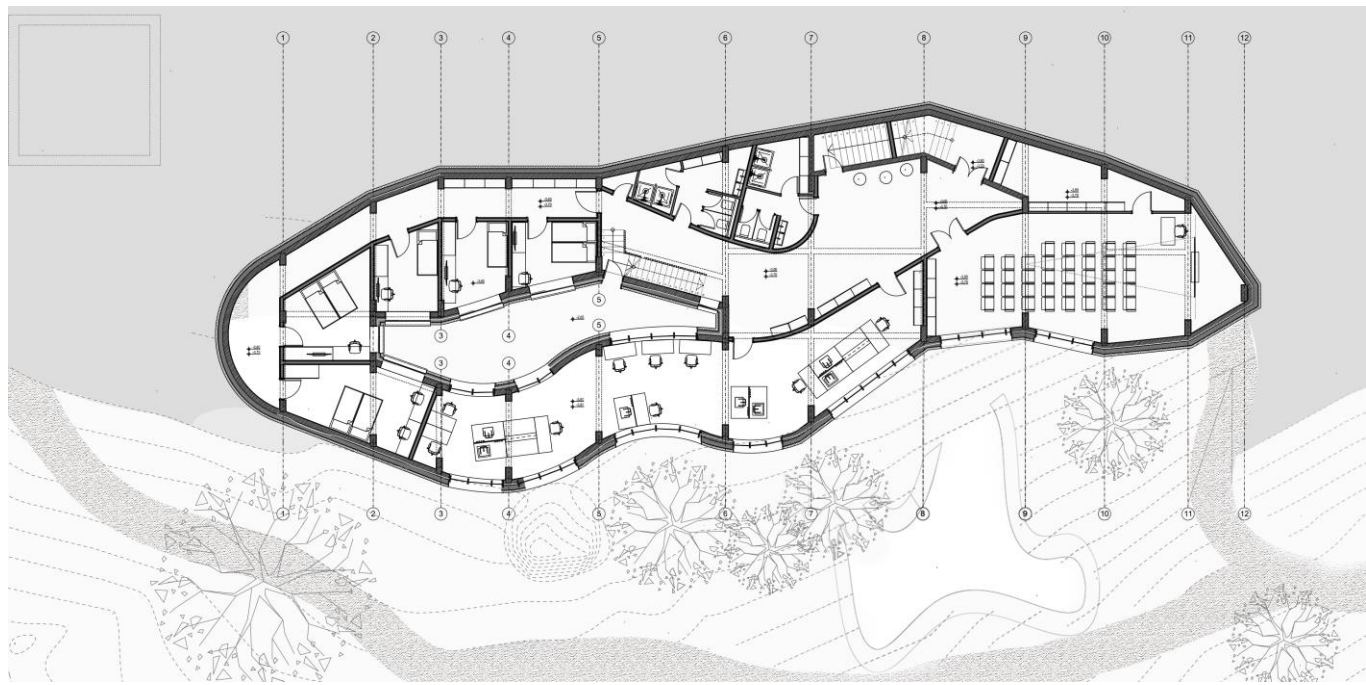
- As a critical architectural gesture, the project questions how to build in fragile landscapes: not through dominance, but through respect, contextual intelligence, and architectural humility. It represents an original, site-specific solution—experimental in its use of terrain, sustainable in ambition, and poised to redefine standards for public infrastructure in protected environments.



▲ 3D View and Section



▲ Ground Floor Plan



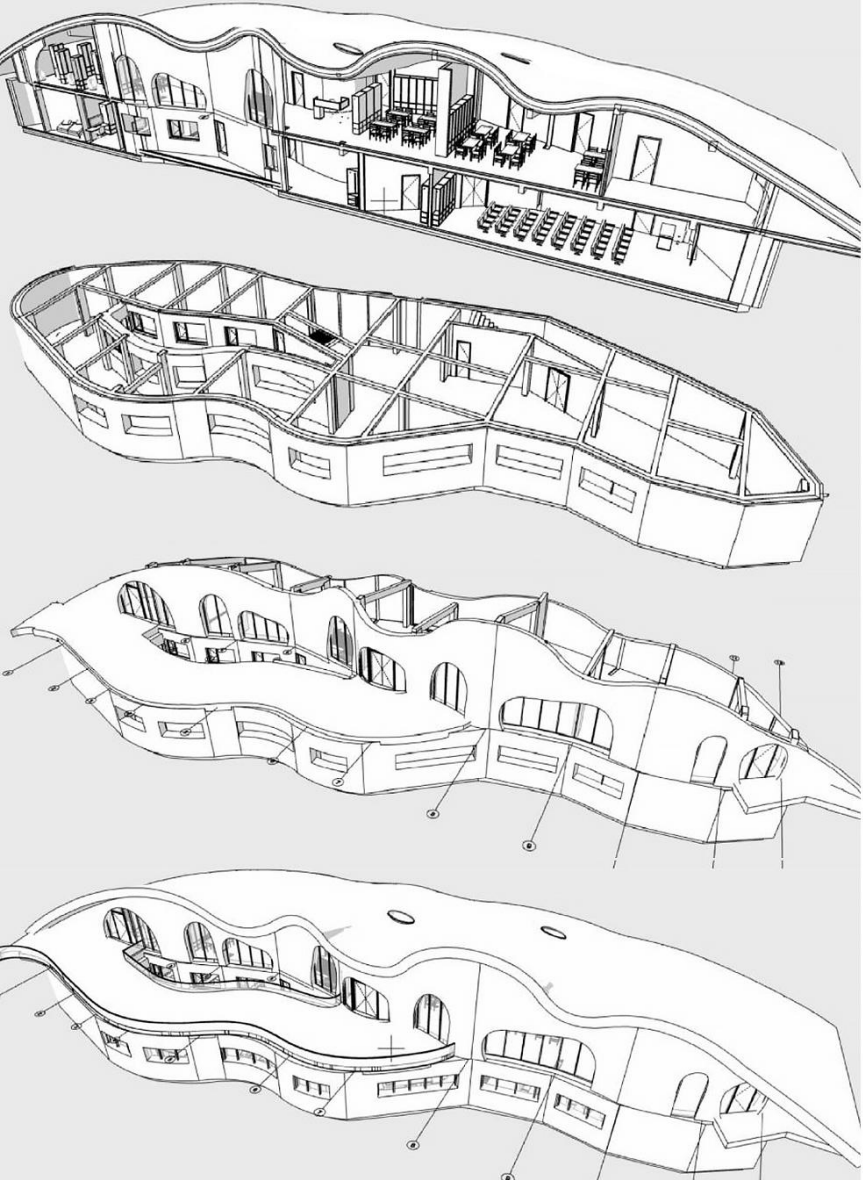
▲ Underground Plan



▲ View from the ground floor, above english courtyard

Located on a remote alpine plateau in Ceahlău National Park—without road access, electricity, or water—the site posed extreme logistical and environmental challenges. Designing a building that is both off-grid and ecologically integrated required rethinking conventional construction.

Every element had to be modular, lightweight enough for remote transport, yet durable and massive enough to ensure long-term performance and seamless embedding into the terrain. Prefabrication, passive systems, and minimal impact techniques were key.



▲ 3D Section and structural elements



▲ View from the water feature (up); Terrace above basement (down)







