



PROJECT TITLE: **HEALTH STATION KOTLUJEVAC**  
CATEGORY: **FUTURE PROJECTS – HEALTH CENTERS**  
LOCATION: **ZAJEČAR, SERBIA**

## Architectural and Urban Concept for the Reconstruction and Extension of the Kotlujevac Health Station, Zaječar

The reconstruction and extension of the Kotlujevac Health Station arises from the need to modernize a key piece of local healthcare infrastructure, located within a residential fabric of low-density housing in the southern part of Zaječar. Originally constructed in the late 1970s, the existing structure reflects a typology rooted in corridor-based organization, limited adaptability, and outdated spatial logic. The architectural response embraces this context as both a challenge and an opportunity for transformation.

The project proposes a sensitive yet decisive intervention that retains the usable core of the existing building while introducing a new architectural layer — one that redefines both its function and its presence in the urban landscape. The extension is conceived not as an appendage, but as a continuation and enhancement of the original structure, aligning with the rhythm of the neighborhood while introducing a clearly articulated identity for the institution.

At the heart of the concept is the idea of clarity — in circulation, spatial hierarchy, natural lighting, and programmatic zoning. Public and semi-public areas are clearly distinguished from clinical and administrative zones, with emphasis on intuitive orientation, daylight access, and comfortable waiting spaces. A new entrance canopy and forecourt establish a welcoming threshold, while internal reorganization enables seamless operational flow and compliance with contemporary healthcare standards.

The architectural language is restrained and functional, yet warm and human-scaled. Façade treatments employ a palette of light-colored plaster, aluminum elements, and strategically placed shading devices to balance openness with privacy. The overall volume is composed to maintain continuity with the surrounding residential scale, avoiding monumentality in favor of civic dignity.

The project also emphasizes sustainability through passive design strategies, thermal efficiency upgrades, and the use of durable, low-maintenance materials. Landscape interventions around the building promote permeability and create a green buffer between the facility and neighboring plots, while offering pleasant micro-environments for short breaks and patient recovery.

Ultimately, this project aims to deliver more than a renovated building — it seeks to re-establish the Kotlujevac Health Station as a trusted, contemporary, and resilient civic institution rooted in the everyday life of the community it serves.



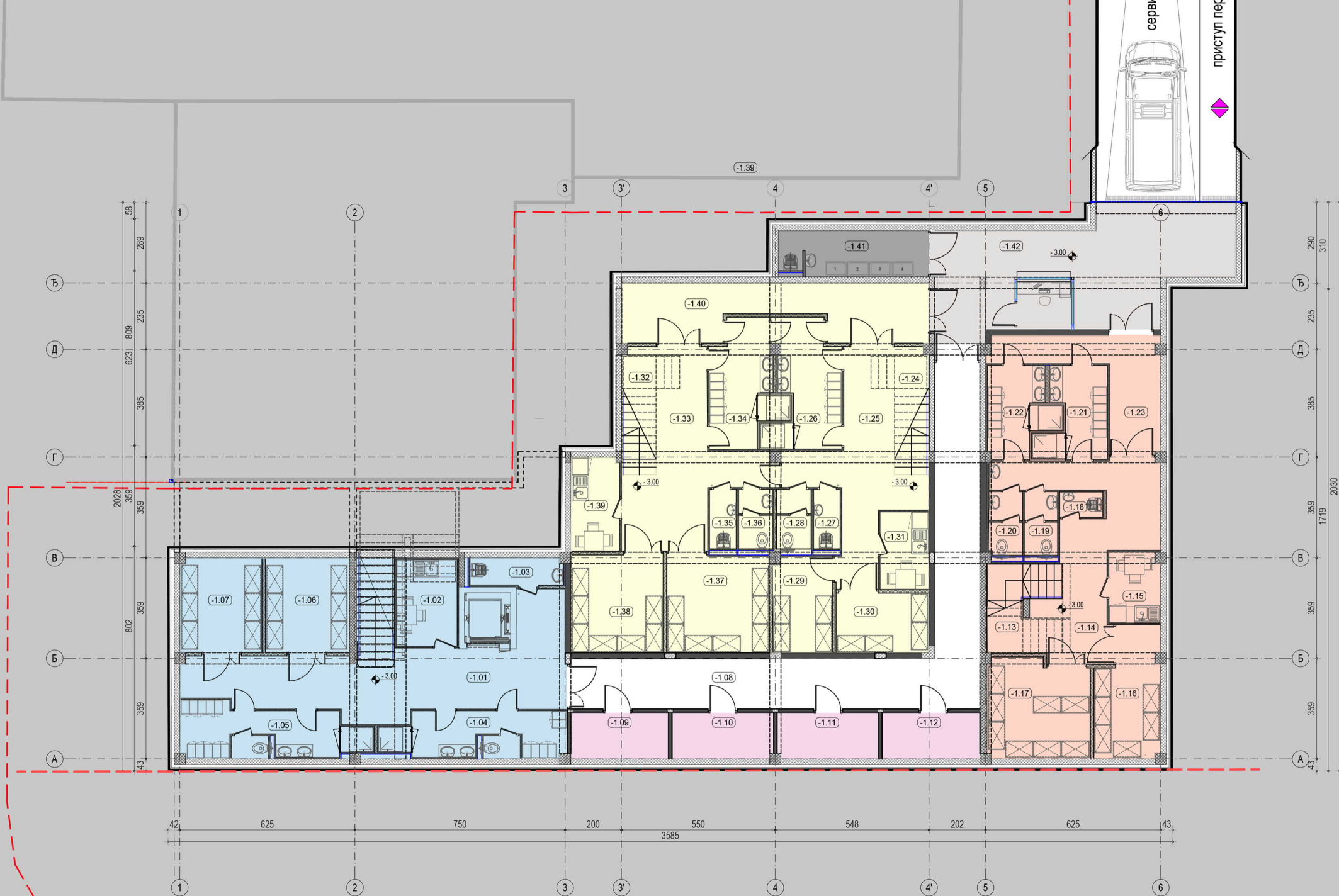


ZDRAVSTVENA STANICA KOTLUJEVAC +

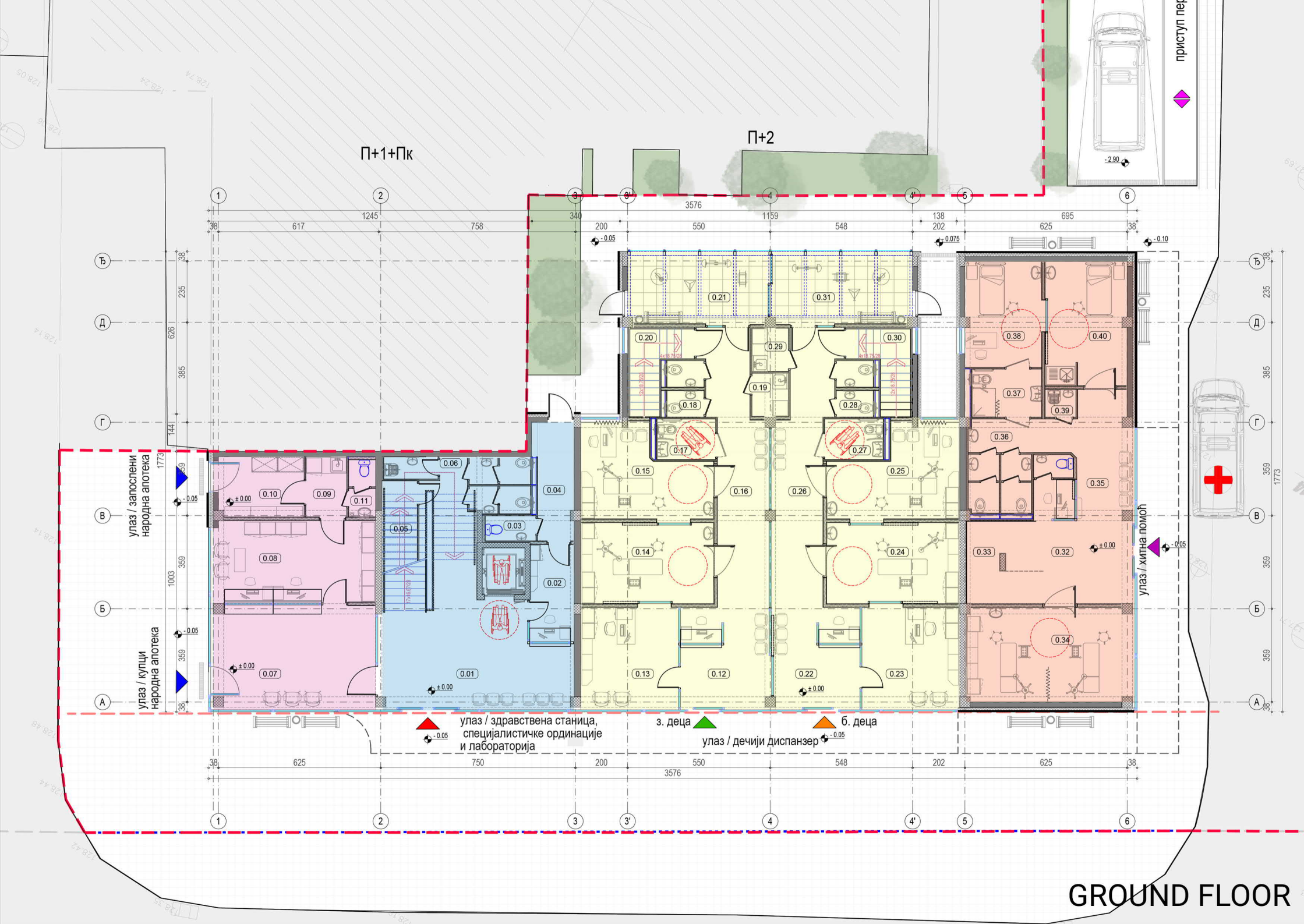








BASEMENT









SECTION