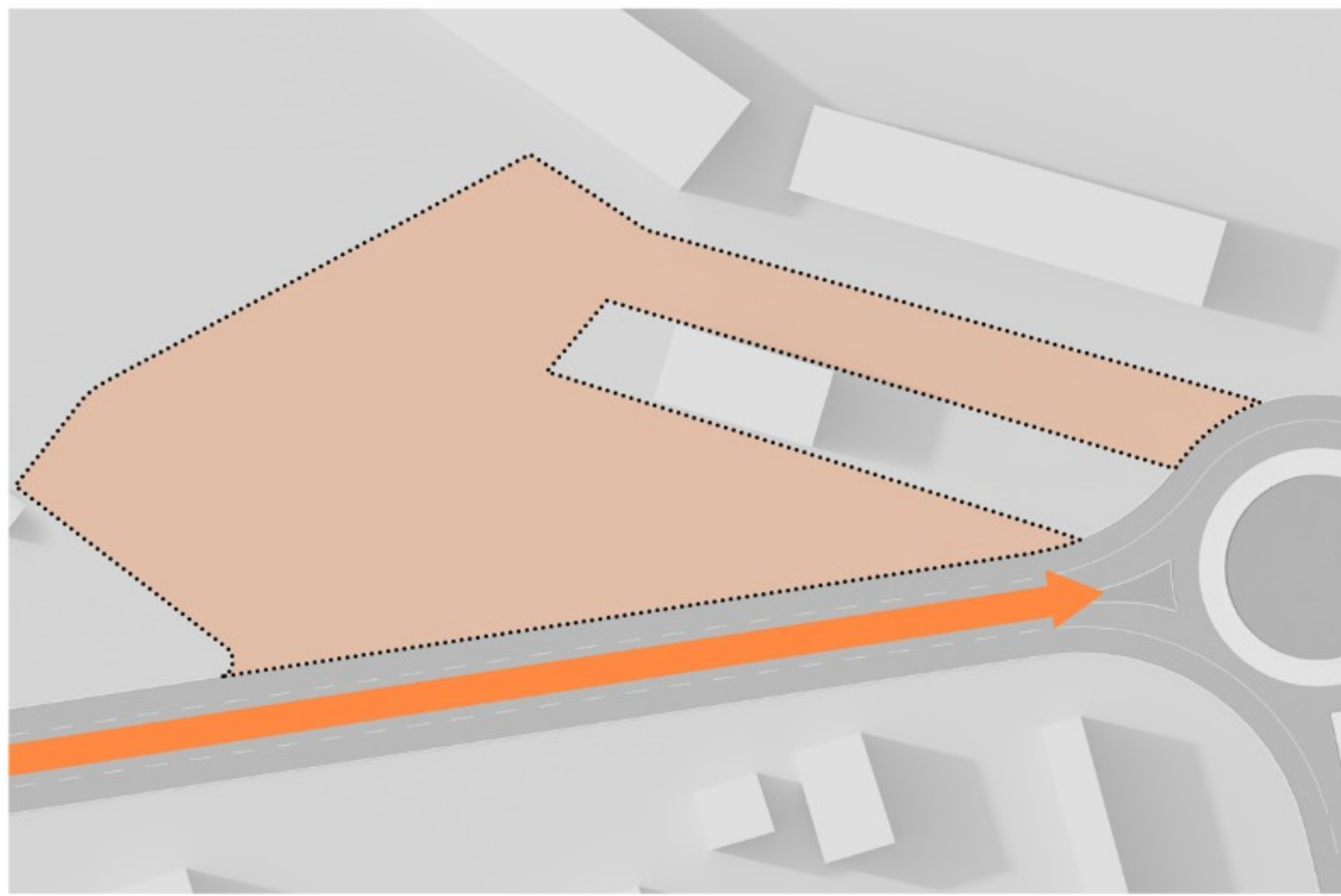


Auto BIBAJ

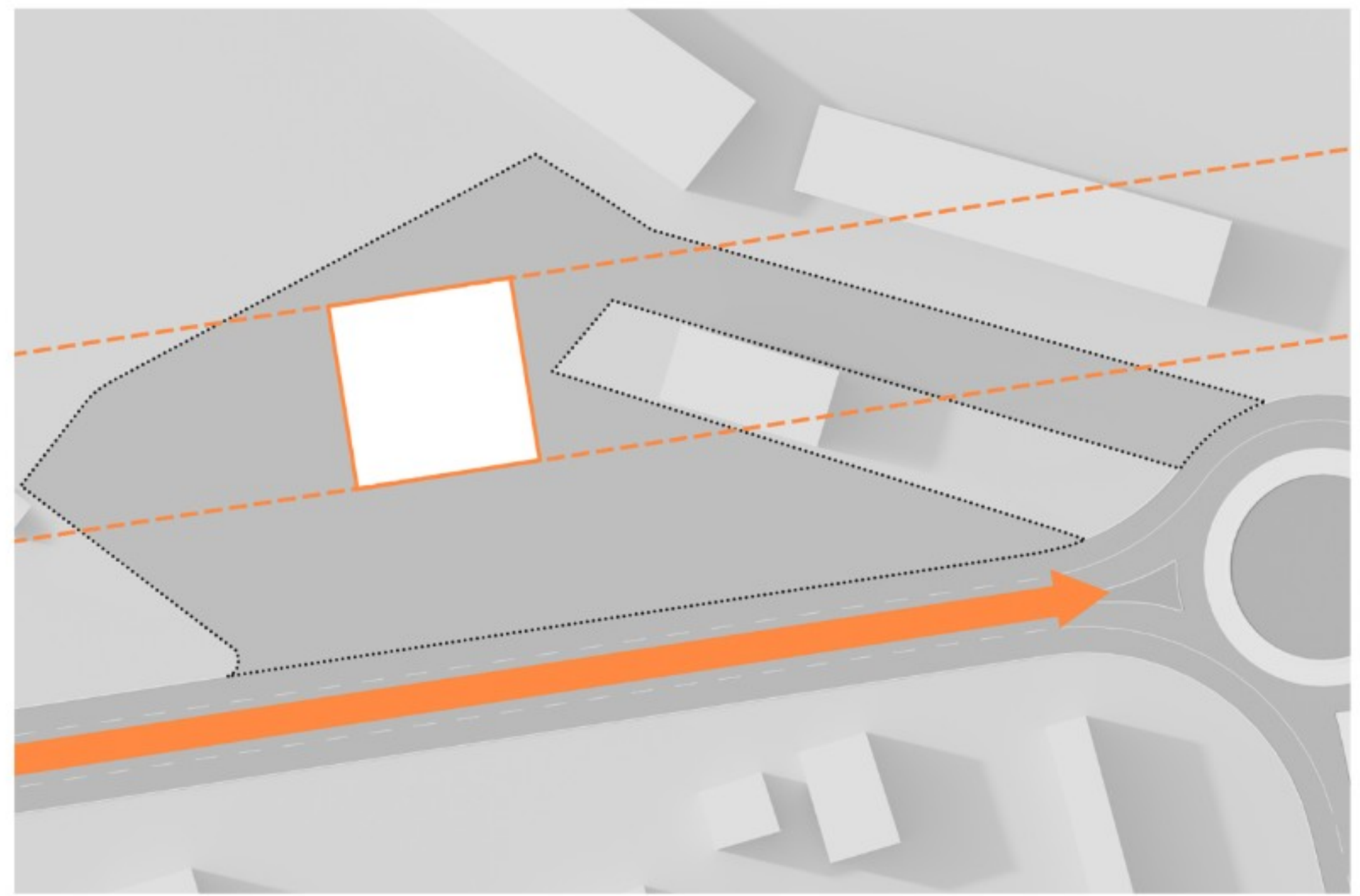
Car Showroom





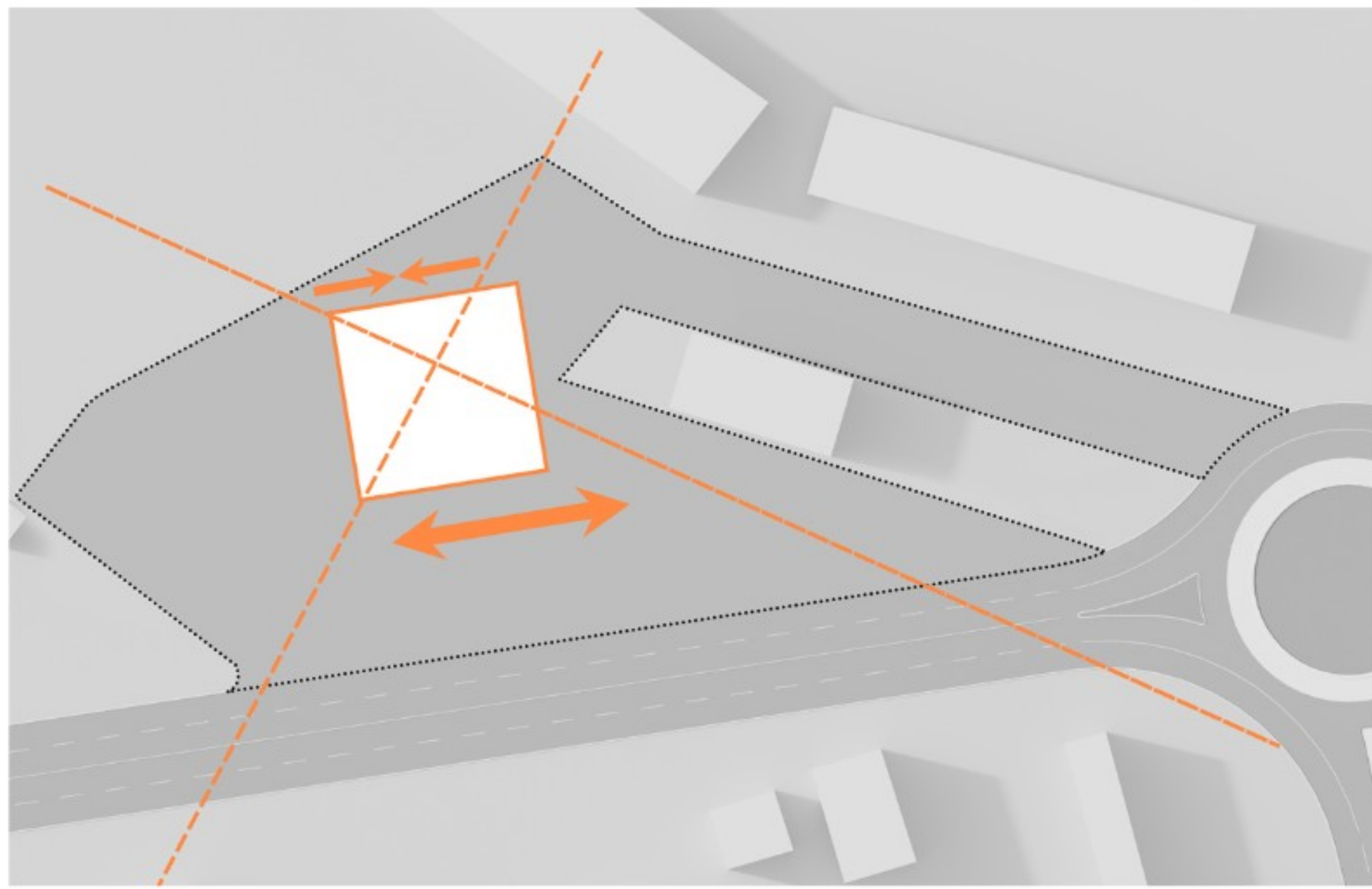
1

Parcel boundary delineation and road mapping.



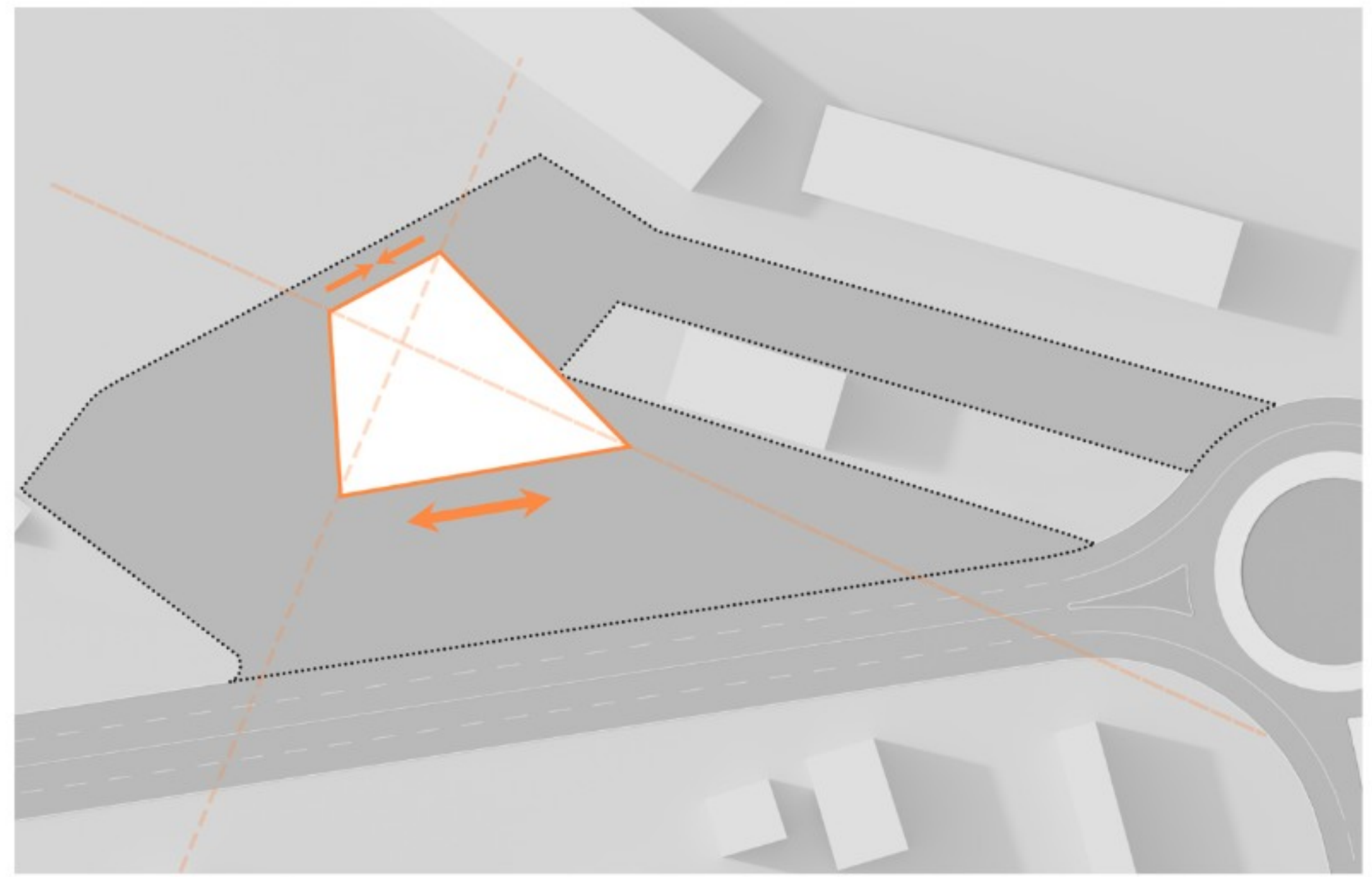
2

Initial cubic form and creation of axes parallel to the road.



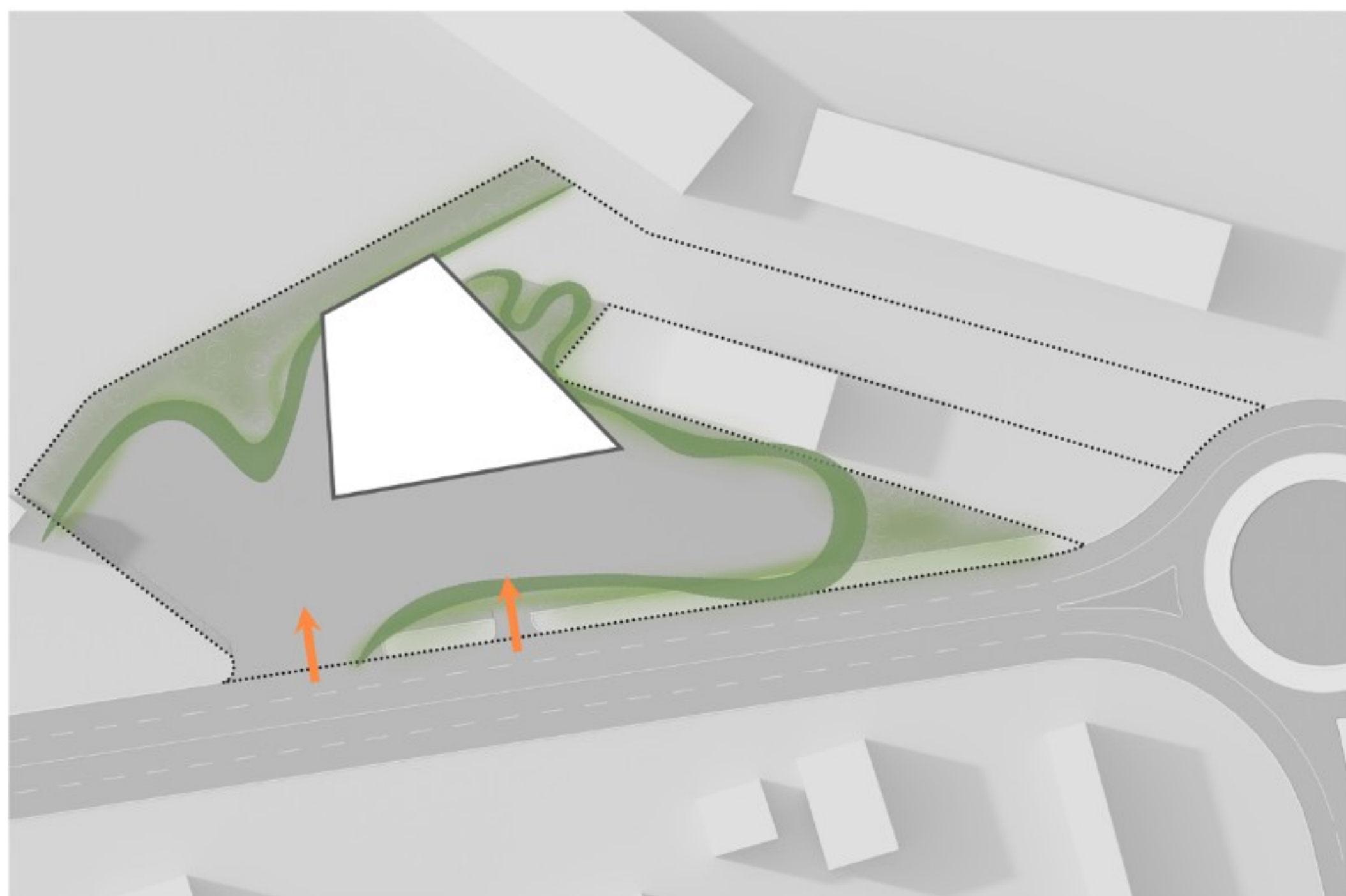
3

Expansion of the front section facing the main road and tapering towards the rear.



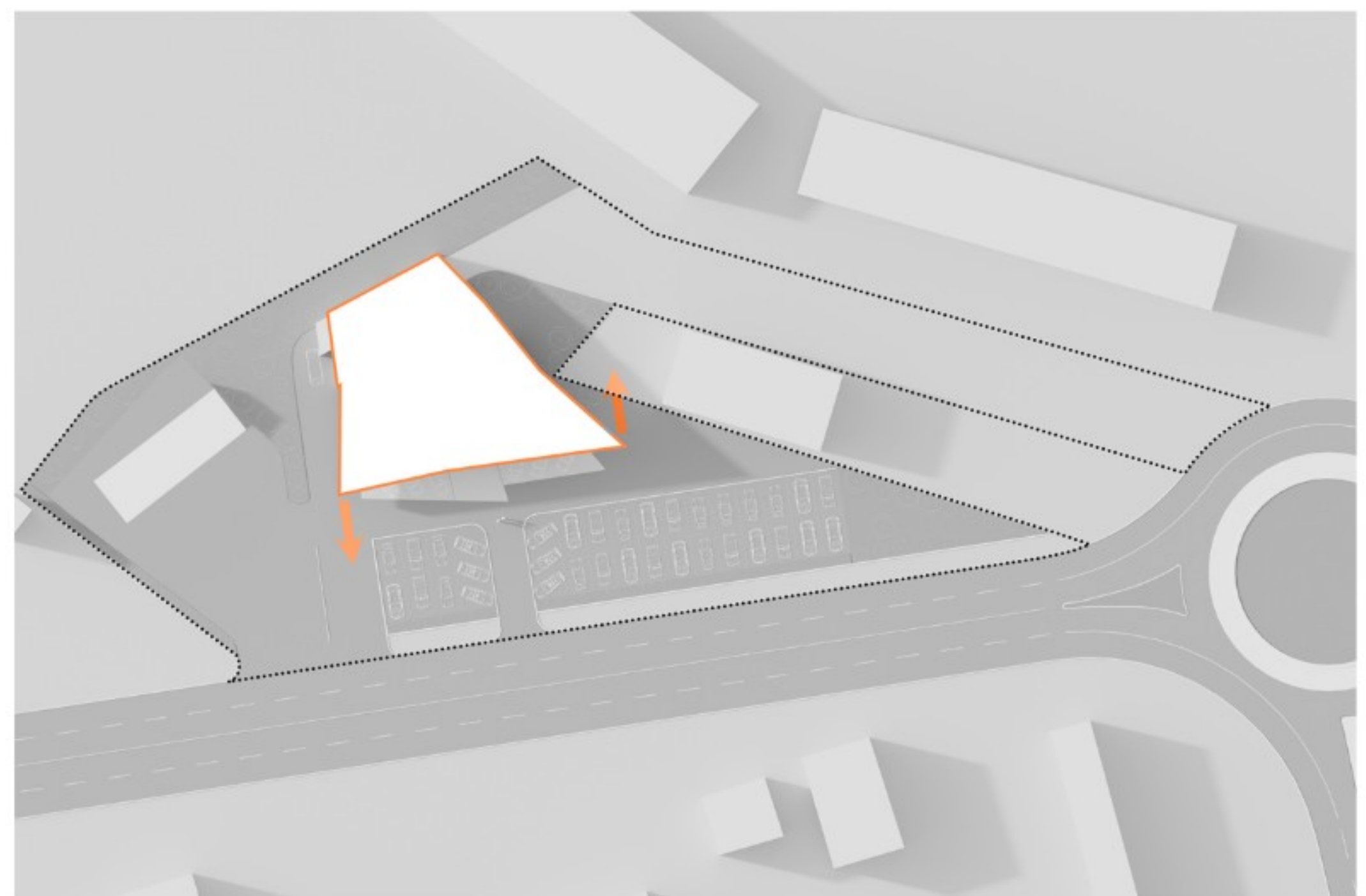
4

The final form tends toward a trapezoidal shape to enhance visibility from the main road.



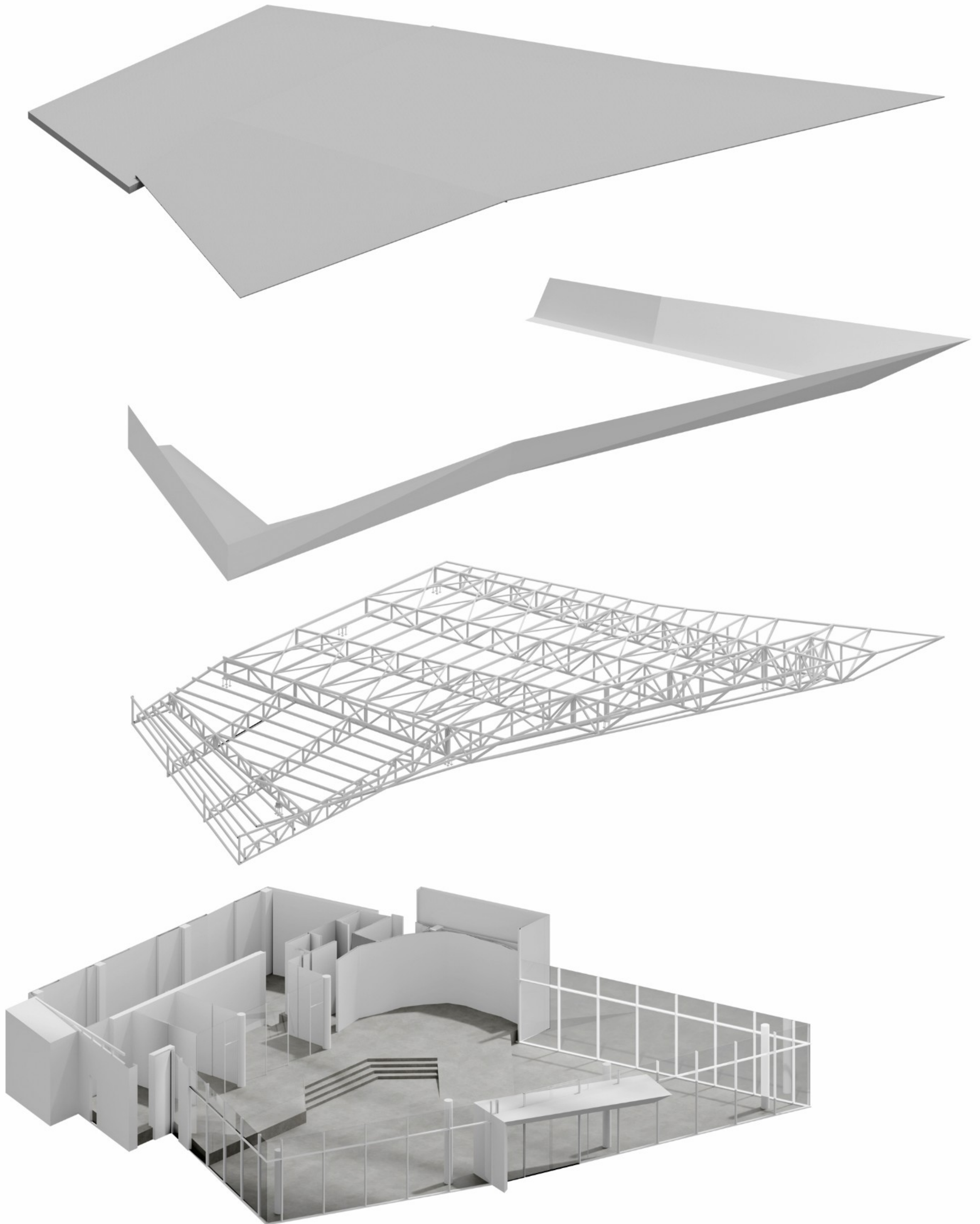
5

Creation of open spaces and greenery within the plot.



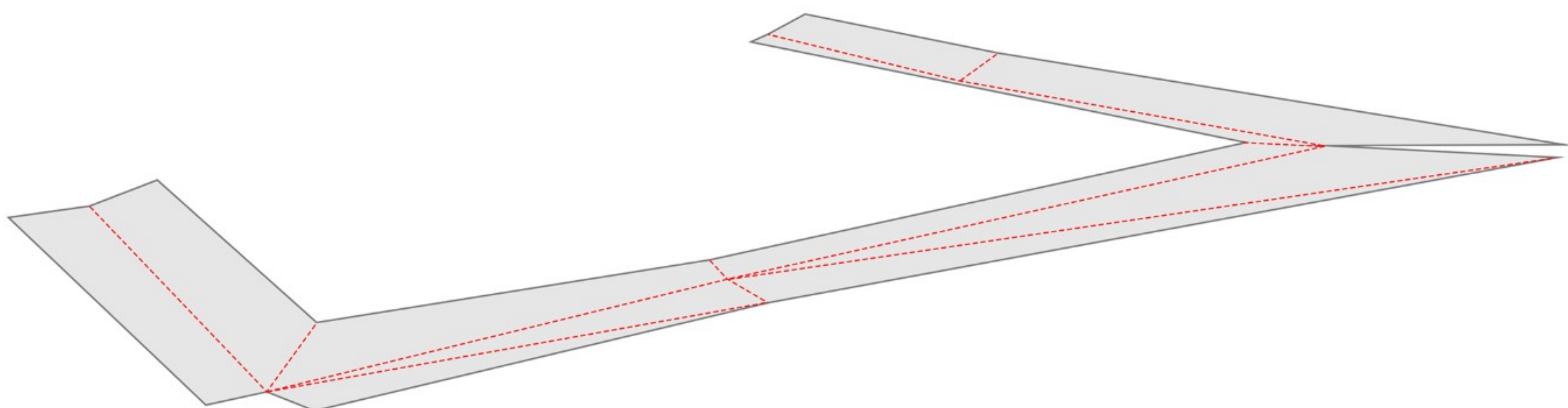
6

Establishing a vertical hierarchy, with the right corner elevated and the opposite end lowered, following the main trajectory of incoming traffic which moves from right to left.

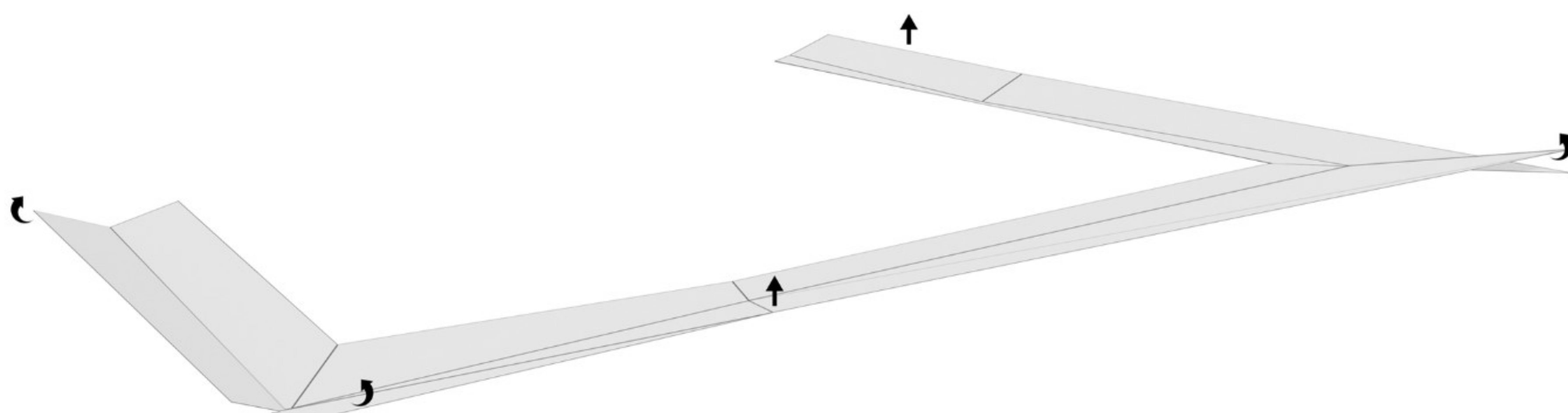


Exploded axonometric view and the building's structure.

1.



2.



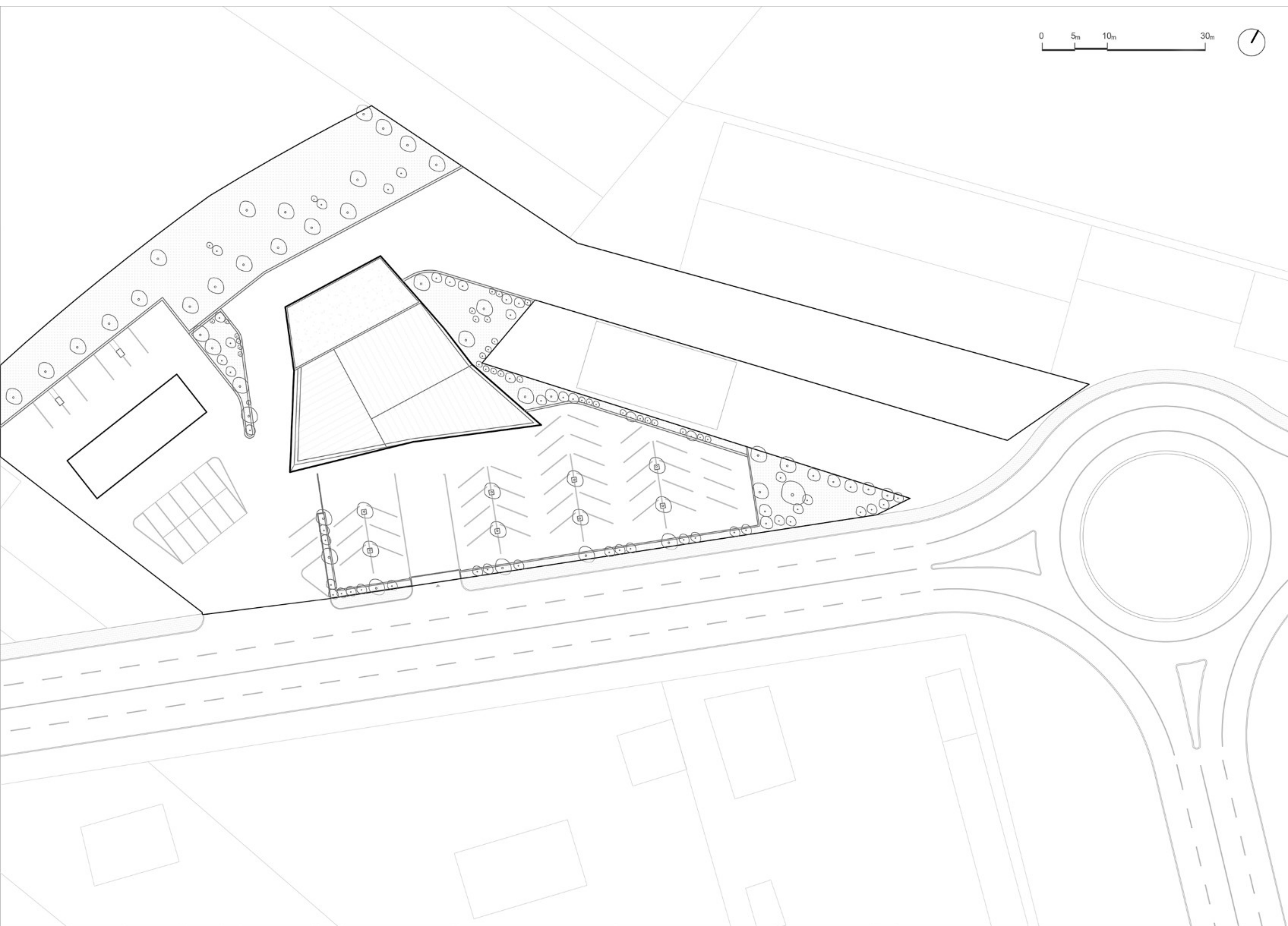
3.



Auto BIBAJ

Car Showroom

Site Plan



Auto Bibaj is a showroom for cars and comes as a special architectural form, based on identifying elements of design with steep corners and angles. The general shape of the building is clearly perceived from a distance, but at the same time it is dynamic, changing shape along the entire movement on the main road axis.

The object consists of a pure volume with a parametric shelter, which with the created geometric play is perceived as sloping, even though the height of the rafters is the same along the perimeter.

Auto BIBAJ

Car Showroom

Site landscape



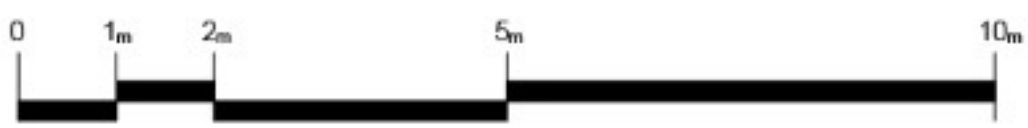
The car salon is located on the ground floor and is divided into two spaces based on the function. These spaces, apart from the planimetric aspect, are also treated differently from the construction. The first volume at the entrance of the building is 4.5m high and is surrounded by a semi-structural facade, the construction of this volume consists of trusses which cover a distance of 10-15m. This space is all designed for business and car shows. The other volume, in the northern area, is raised 64cm with stairs and has a height of 3.7m, its construction consists of a reinforced concrete slab. This volume includes the administrative offices, the coffee bar and the toilets.

The object has a separate entrance from the street, which stands out with the shelter and the ramp positioned in the middle of the volume, so that the main entrance is easily identified by passers-by.

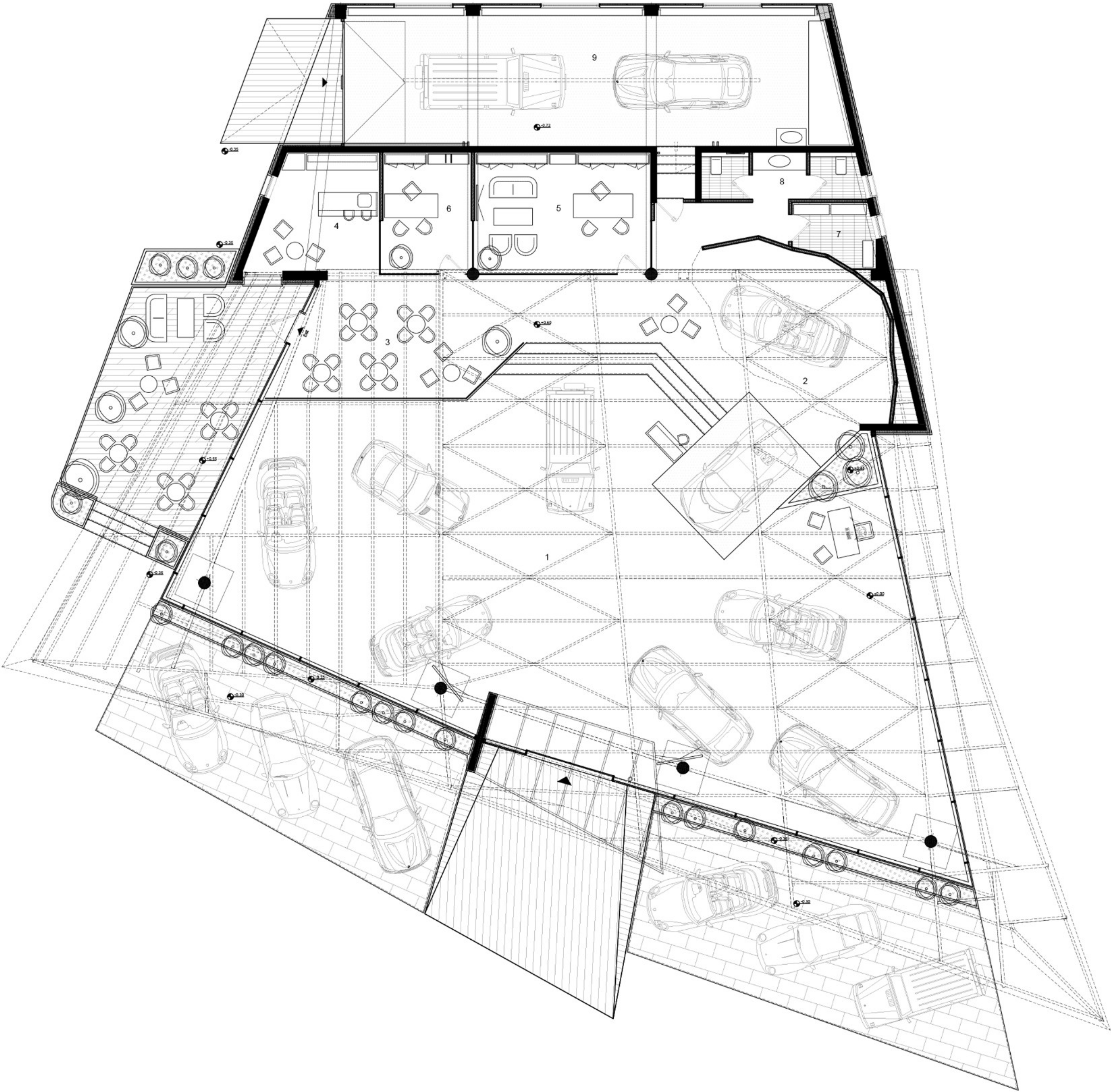
Auto BIBAJ

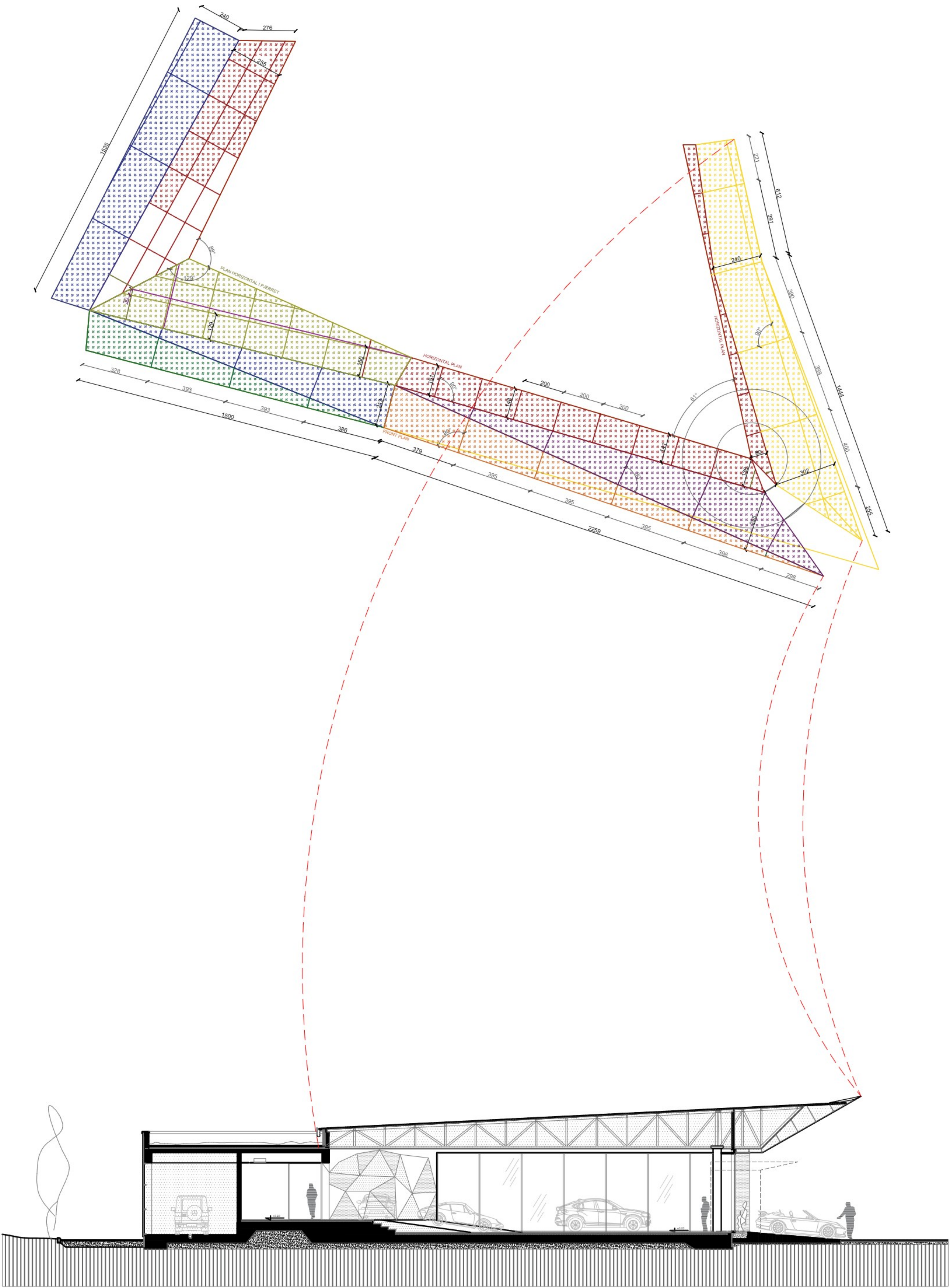
Car Showroom

Ground Floor Plan

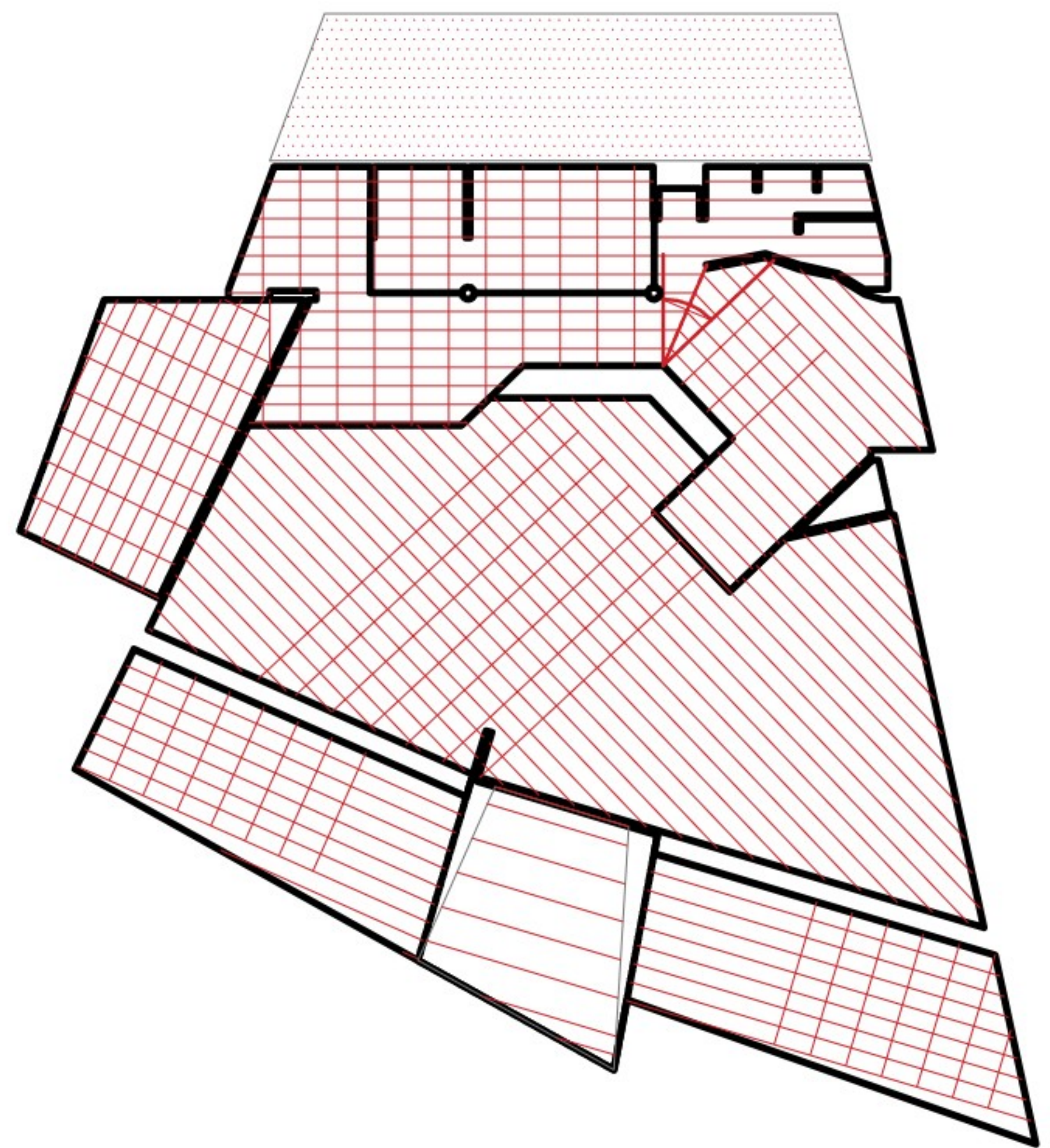


- 1 Showroom
- 2 Photographing Corner
- 3 Waiting area
- 4 Bar
- 5 Main Office
- 6 Private Office
- 7 Storage
- 8 Toilets
- 9 Car Preparing

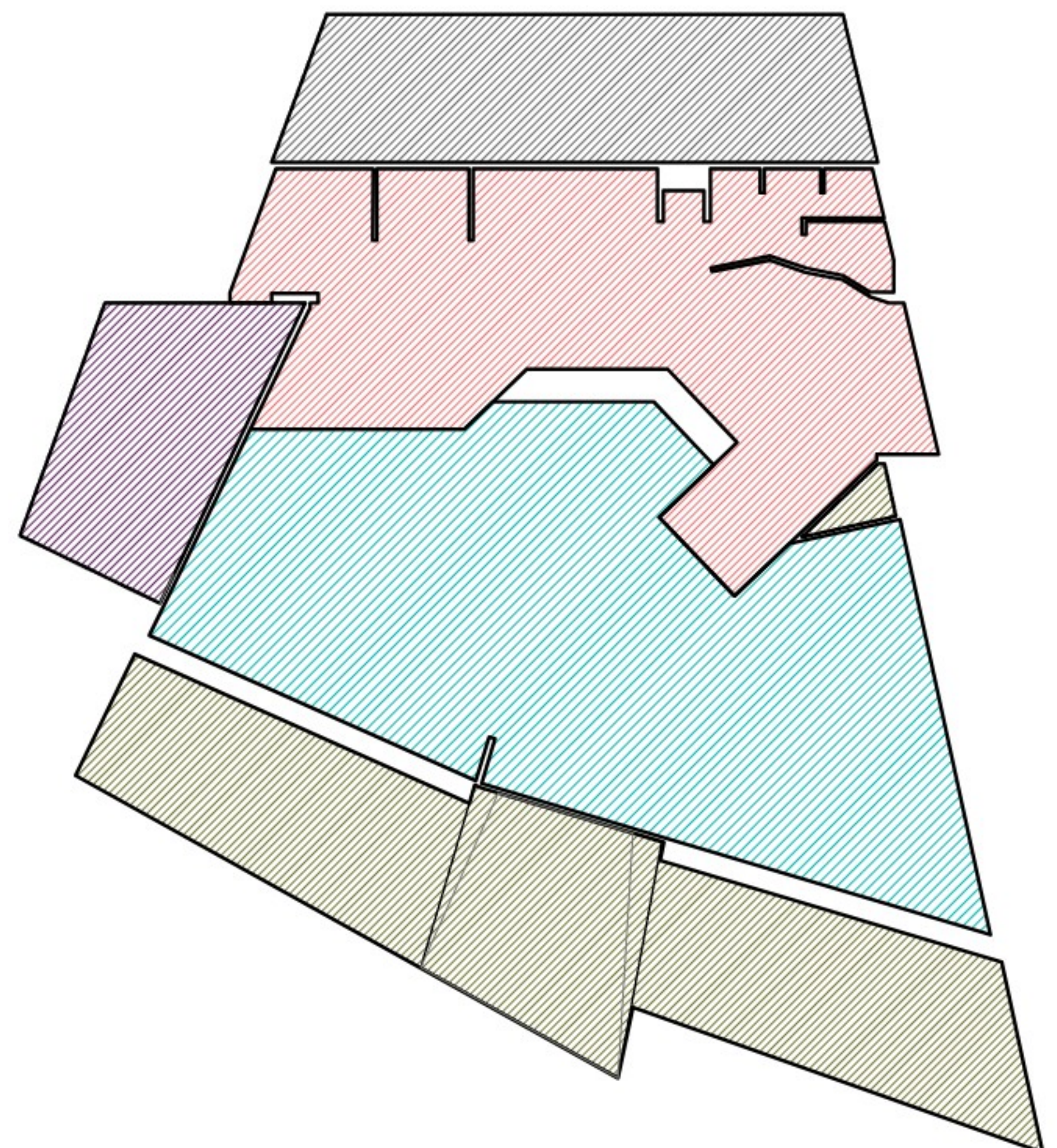




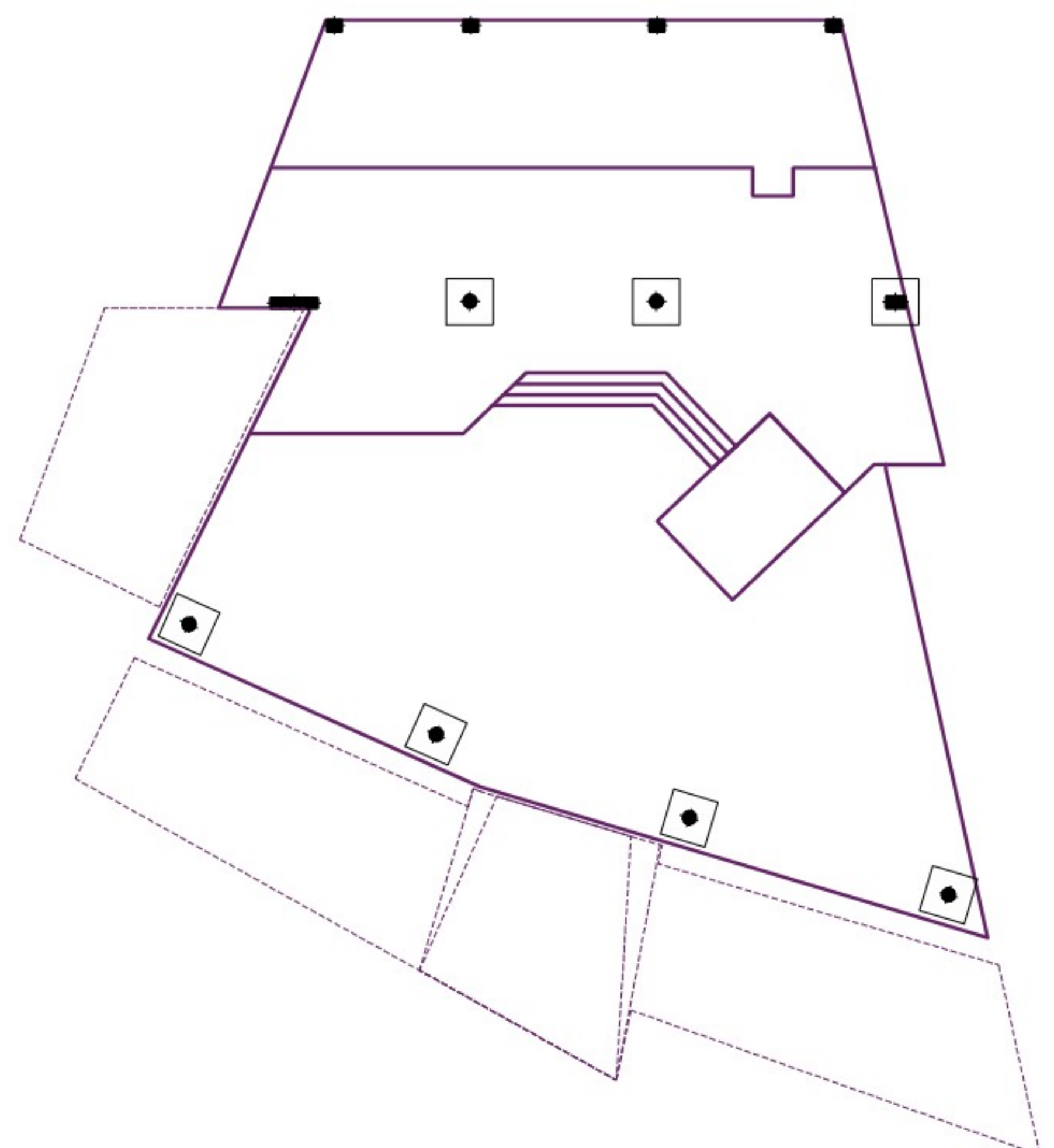
section A-A



1. FLOOR TILE CONCEPT

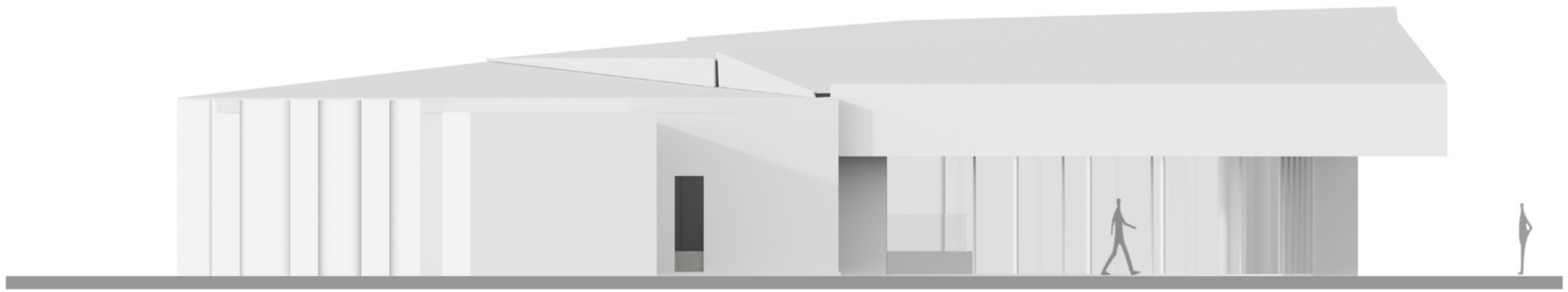


2. DIAGRAM OF FUNCTIONALITY



3. FOUNDATIONS DIAGRAM

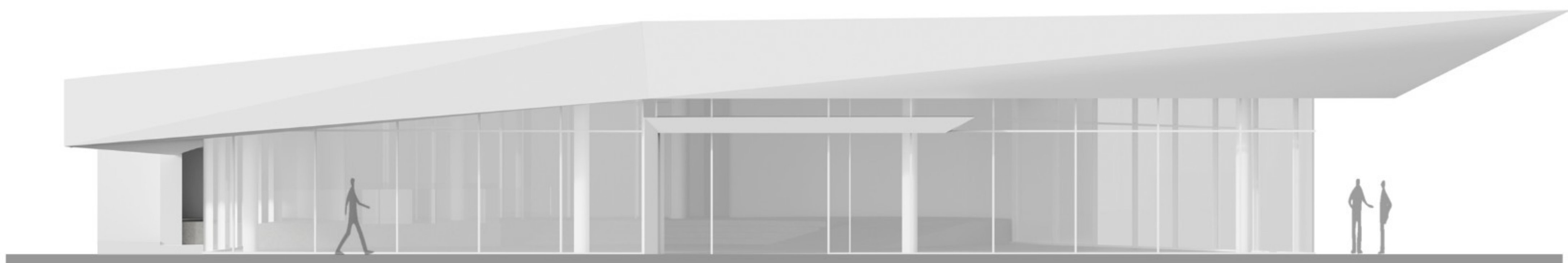
North-East Elevation



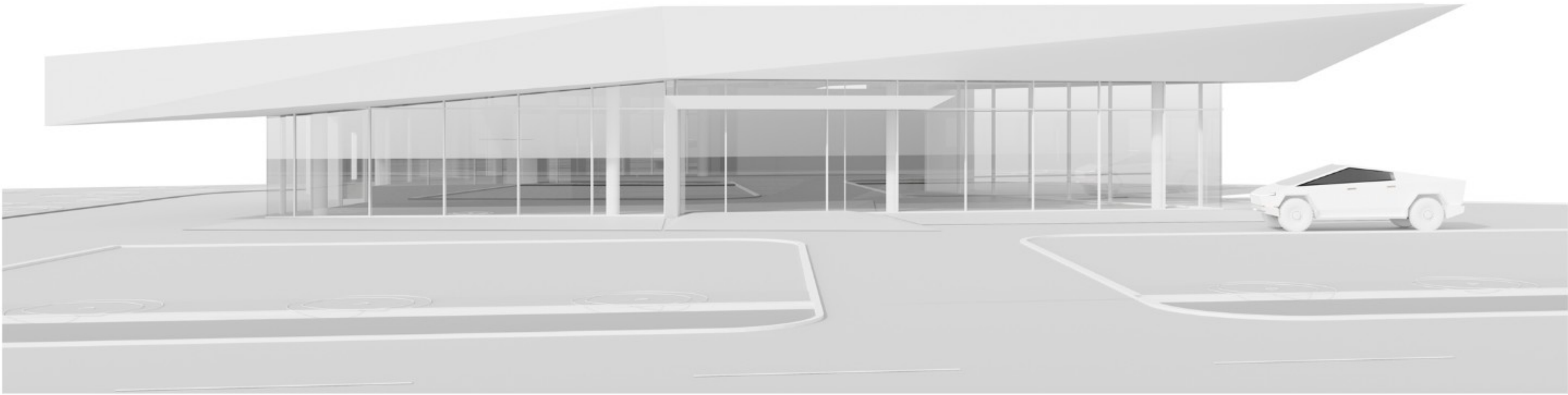
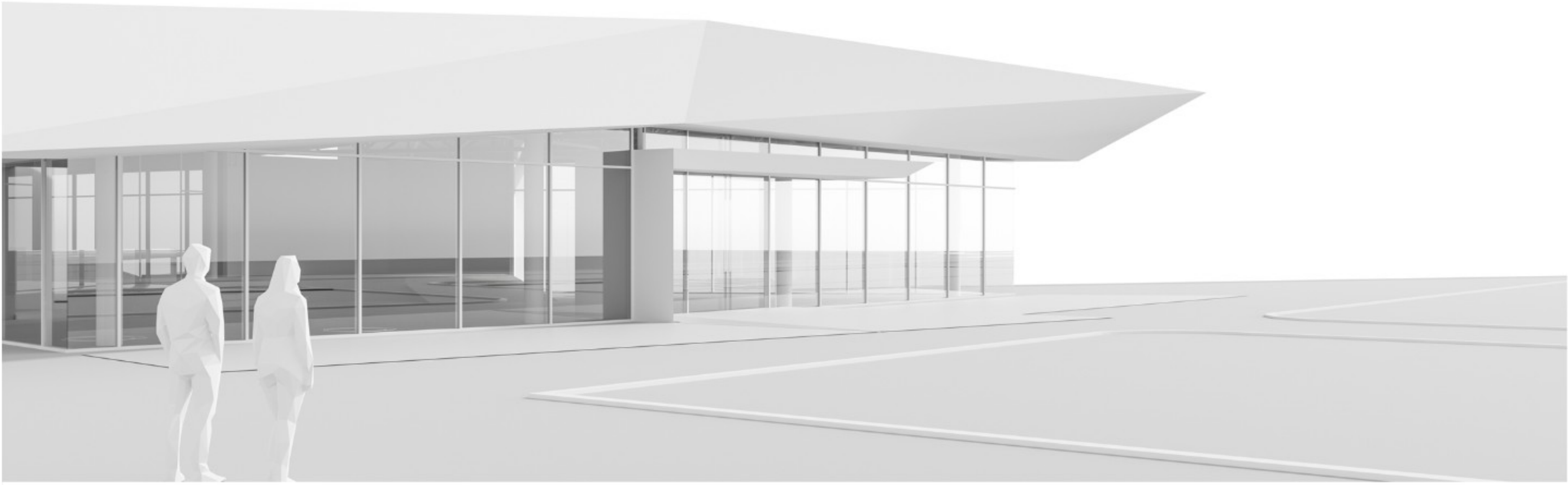
South-West Elevation



South-East Elevation



Axonometric Views



Site layout plan, set out on location during construction works













