



ARCHITECTURAL OFFICE IN SZCZECIN

OFFICE DESIGN -
THE BEST BUSINESS
CARD FOR THE
COMPANY



LOCATION

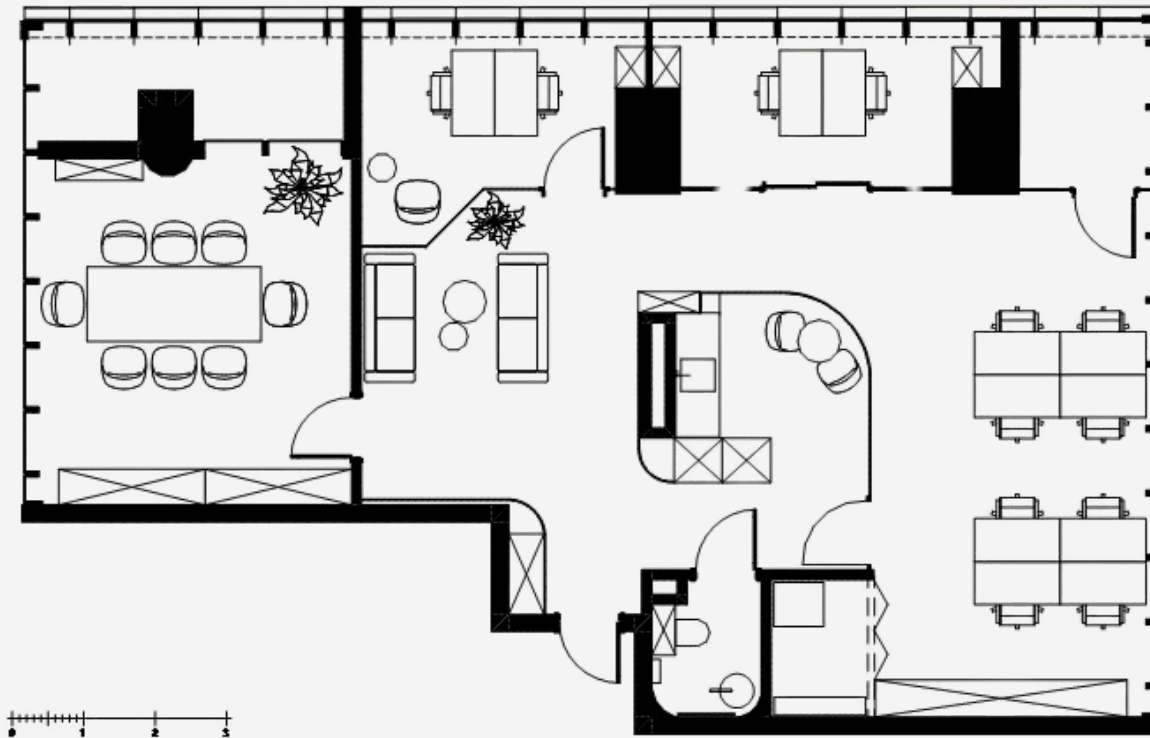
CITY : SZCZECIN

COUNTRY: POLAND

In the heart of Szczecin, on one of the highest floors of the prestigious skyscraper, a new headquarters for the bespoke architectural studio has been established. The office has been designed with aesthetics, functionality and the comfort of daily work in mind—just as befits a place where contemporary architectural concepts are created.



FLOOR PLAN



The office design responds to the needs of a modern working environment—where design meets ergonomics. The space was arranged to encourage both concentration and collaboration, creating a harmonious setting for creative teams.

The office is not only a place of work, but also a design statement of the studio itself. Every aspect of the interior has been carefully conceived by the architects—attentive to proportion, light, material and detail. The headquarters thus becomes a showcase of the office's philosophy: modernity, spatial awareness and a commitment to quality.

The office comprises an entrance area, a conference room, private offices, an open-plan workspace, a kitchen area and a bathroom, all of which have been thoughtfully designed.

DESIGN PROCES

Designing the office was a significant challenge. The space had an irregular layout and was heavily constrained by densely spaced structural columns. The key task was to organise the functions so that, despite the technical limitations, an open, legible and comfortable working environment was achieved. The designers had to merge the requirements of ergonomics, aesthetics and the building's technical conditions into a coherent whole. It was necessary to plan the arrangement of furniture, circulation routes and zoning carefully, so as to make the most of natural light and the panoramic view of the city. Thanks to this deliberate approach, it was possible to transform a difficult shell into a modern and comfortable workspace that reflects the character and values of the studio itself.



SURROUNDINGS

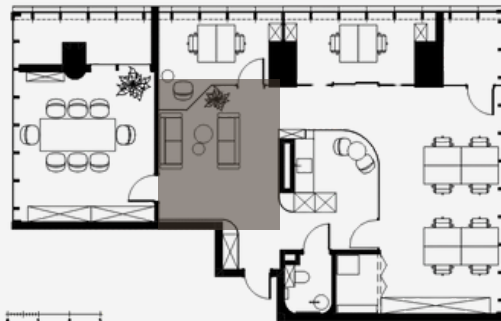
The interior is opened up by floor-to-ceiling glazing, from which one can see the bustling city of Szczecin and, in the distance, the Szczecin Lagoon. Natural light fills the space throughout the day, creating an atmosphere conducive to focus and creativity. This view is an integral part of the experience of working in the office—the changing light of day and the cityscape become the backdrop to everyday design activities.



ENTRANCE ARE

The entrance area performs a representative function and sets the tone for the entire space. From the moment guests and employees arrive, they enter an open interior that serves as the company's calling card. This area is not only a place of welcome, but also a first impression—conscious and carefully considered, just like the rest of the project. Calming earth tones and natural materials prevail throughout the entire office.

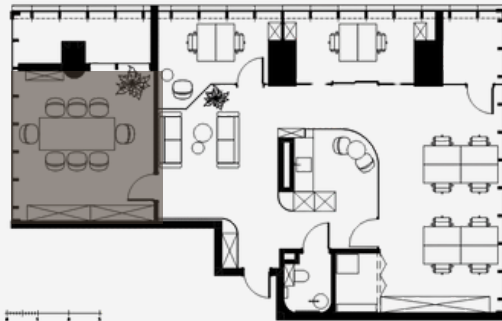
FLOOR PLAN



CONFERENCE ROOM

A key part of the office is the conference room, designed with attention to detail and user comfort. Neutral colours dominate here, complemented by striking accents—orange armchairs referencing the corporate identity. Modern linear lighting and integrated multimedia systems enhance the functionality of the space.

FLOOR PLAN



OPEN SPACE

The open-plan workspace has been designed as a versatile, functional area that meets the daily needs of employees. Ergonomic desks and comfortable chairs ensure ease during long working hours, while thoughtful zoning supports both concentration and seamless communication among team members. Carefully selected materials—warm wood and subtle fabrics—introduce a welcoming atmosphere while underscoring the office's modern character. Delicate colour accents and contemporary ceiling lighting complete the ensemble, creating a space conducive efficient work.

FLOOR PLAN

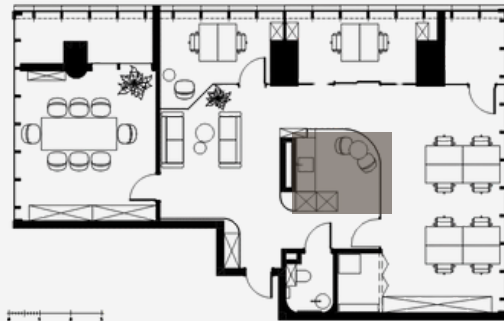


KITCHEN

In the kitchen area, high-quality materials have been used: cabinet fronts in a natural wood finish, and a worktop and wall clad in sophisticated quartz sintered stone. Integrated LED lighting and black fixtures give the interior a modern, refined character. The space is separated by a glass partition, ensuring a balance between openness and acoustic comfort for the adjacent workers.



FLOOR PLAN



CONSTRUCTION





PHOTOS OF THE REALISATION - CONFERENCE ROOM



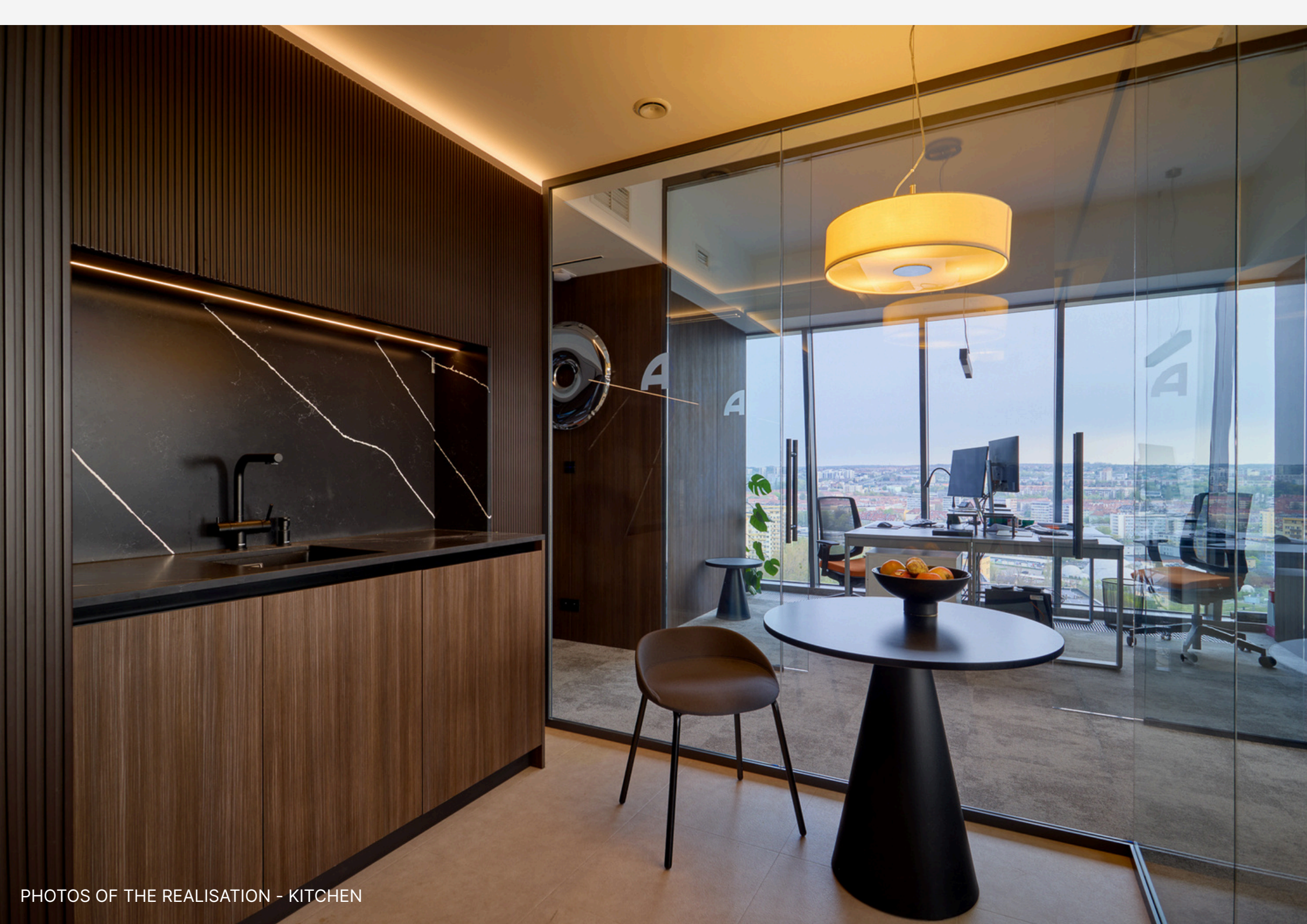
PHOTOS OF THE REALISATION - CONFERENCE ROOM



PHOTOS OF THE REALISATION - ENTRANCE ARE



PHOTOS OF THE REALISATION - OPEN SPACE



PHOTOS OF THE REALISATION - KITCHEN



PHOTOS OF THE REALISATION - BATHROOM