



ROLLING GREENS VILLAS at COSTA NAVARINO

HOUSING PROJECT

MESSINIA
PELOPONNESE, GREECE

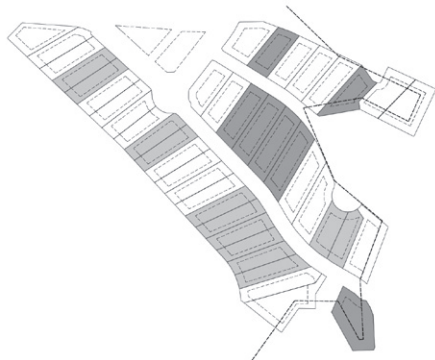
The private villas in the Rolling Greens neighborhood are set in the unique landscape of Navarino Dunes within the Costa Navarino Resort. Their architectural design combined with sustainable construction, created nineteen prototypical holiday villas that embrace sea views, adapt to the landscape's scale, and blend harmoniously with the Costa Navarino aesthetics.

The design of each single storey villa is an exercise in horizontality. Each villa's inhabitation is organised in-between the 'horizons' of a solid platform and a cantilevering roof. Its discreet positioning on the sloping plots benefit by the gentle sloping topography.

On the plane of the habitable platform, the entrance to the villa is located at the beginning of an axis seamlessly connecting indoors and outdoors, front and back. The private spaces are located within solid volumes, offset to each other. The living room, kitchen and courtyards, are perceived as a flowing space meandering between openable floor-to-ceiling glazed surfaces and enclosed volumes, uniting the indoor and outdoor to a relaxed and informal whole.

Extending horizontally beyond the roof, the platform offers a sunbathing area, reaches the swimming pool, visually incorporates the golf course panorama and perfectly aligns with the Ionian Sea horizon. The outdoor dining, cooking and lounge area complements fully openable indoors spaces, and a sunken fire pit offers a peaceful corner to appreciate the captivating surroundings.

The roof being flat and planted -essentially the fifth 'facade'-, converses with the surrounding lush Mediterranean vegetation. It also incorporates solar collectors and skylights, acting as a climatic moderator, contributing to the thermal comfort of the residence, while providing generous shaded spaces for all-day outdoor living below.



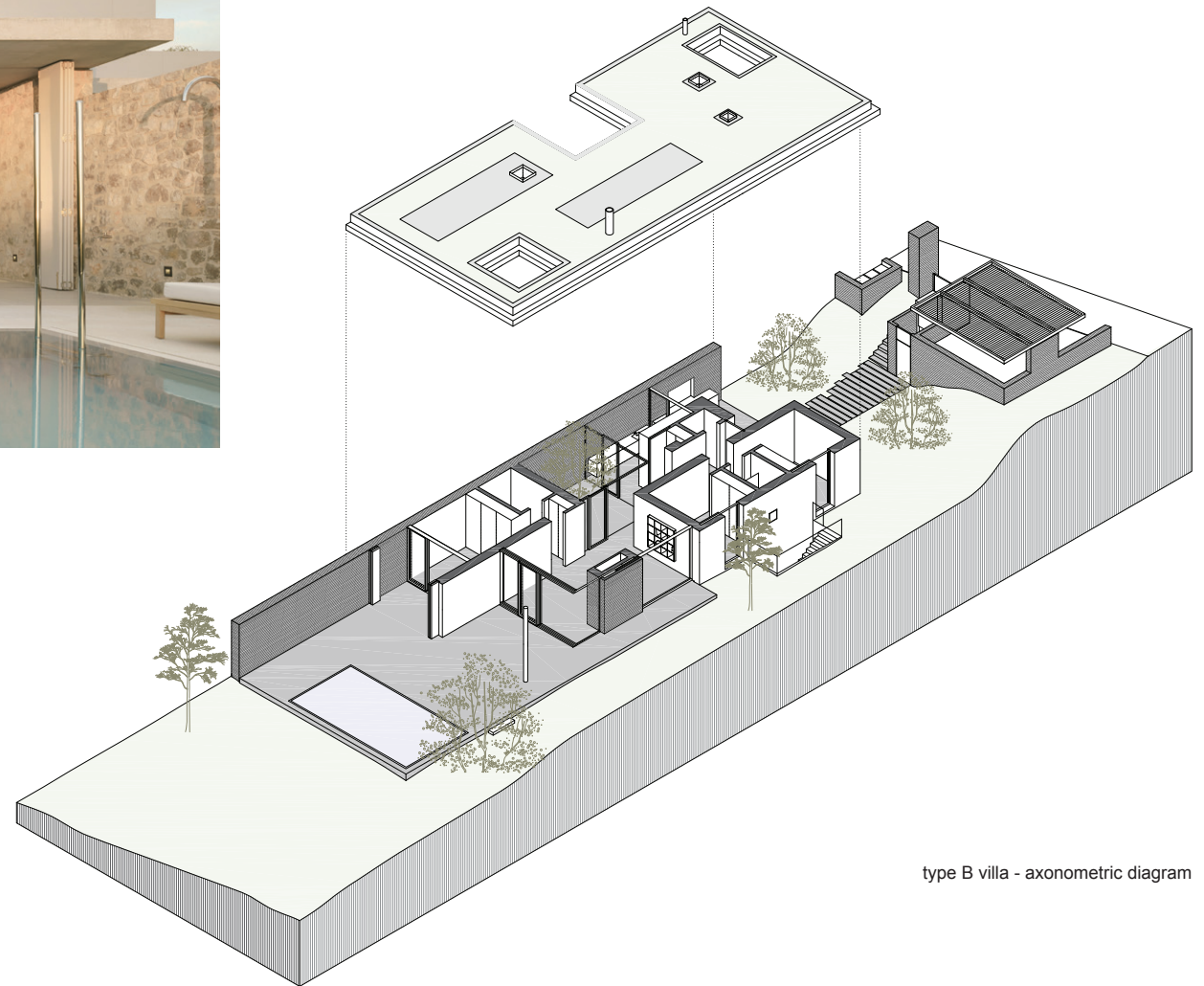
Rolling Greens neighborhood master plan



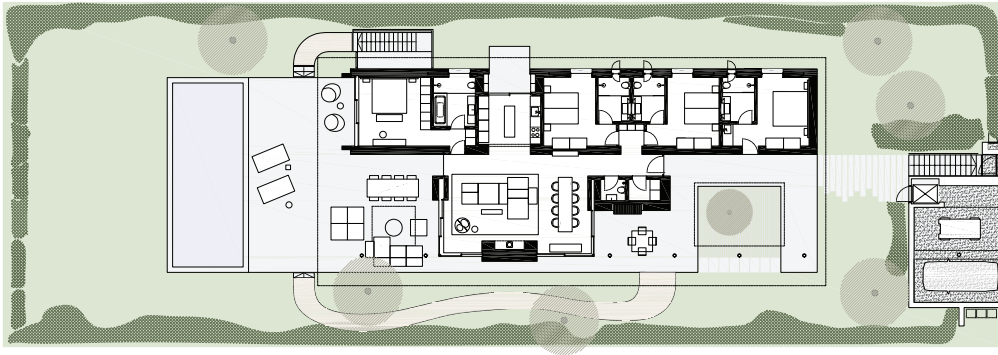




type B villa - garden facade



type B villa - axonometric diagram



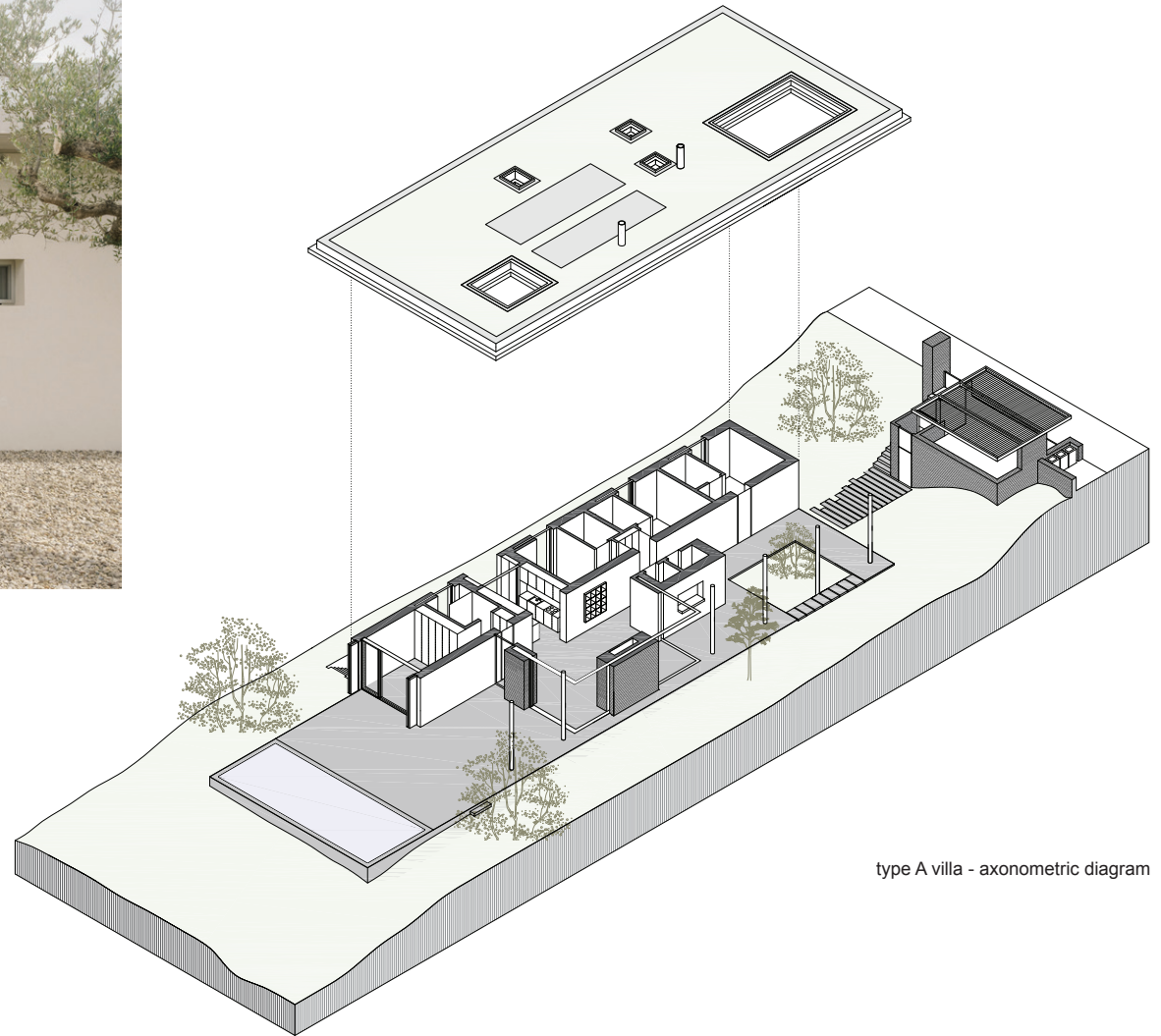
type A (detached 4-bedroom) villa - plan



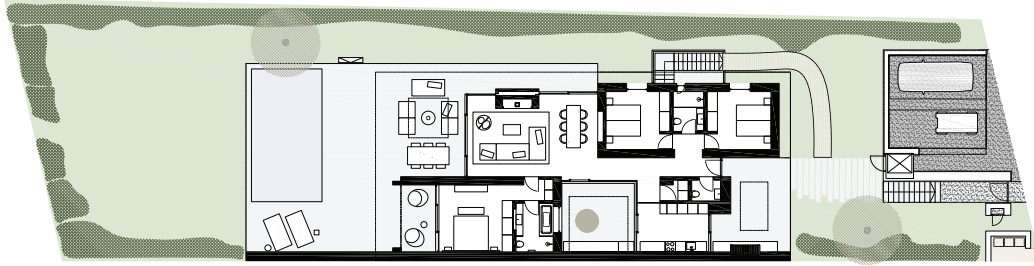




type A villa - side facade



type A villa - axonometric diagram



type B (semi-detached 3-bedroom) villa - plan





type A villa - dining



type B villa - dining

type A villa - living areas



type A villa - external areas





type A & type B villa - kitchens





type A villa - long elevation