

**PARENT'S
HOUSE
TUZLA**

Project Overview

Roditeljska Kuća (Parents' House) Tuzla is a purpose-built sanctuary for children with cancer and their families during treatment at the University Clinical Center Tuzla. Elevated gracefully on steel columns above the natural terrain, the design preserves existing vegetation and draws inspiration from the traditional Bosnian **sojenica** (stilt house). The project consists of five residential units, a shared kitchen and dining area, a playroom, and support spaces, all designed to prioritize daylight, warmth, and psychological comfort. Its southeast orientation, green roof, and ventilated façade optimize energy efficiency and enhance passive thermal comfort.

The spatial composition is defined by four archetypal, house-like volumes with hipped roofs, joined into a unified structure. This design strategy evokes the feeling of home, offering a sense of safety and familiarity in contrast to typical institutional settings. Large openings throughout the building maximize the connection with surrounding greenery, transforming nature into a healing element that supports emotional well-being. Material choices reflect a commitment to durability, environmental responsibility, and human scale, resulting in a dignified and calming environment that nurtures its users during their most challenging moments.

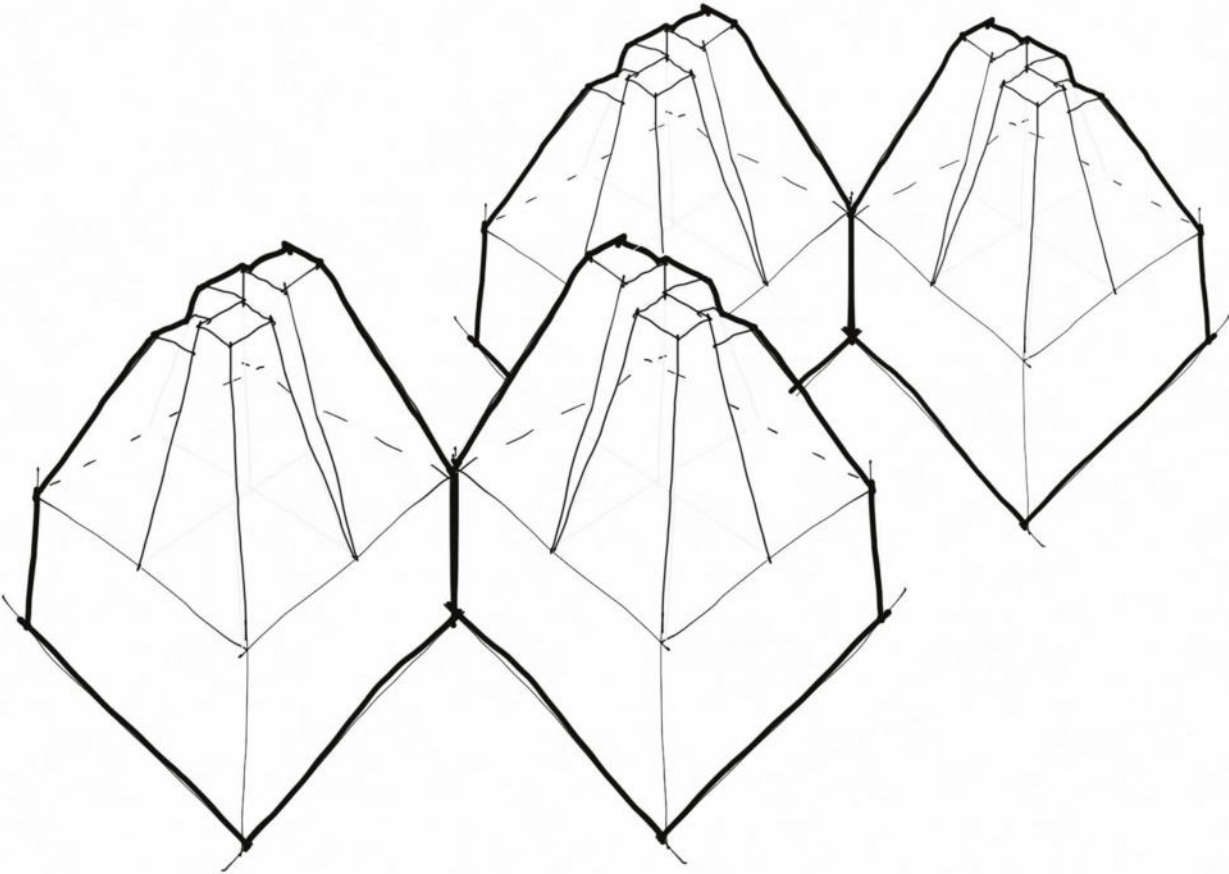
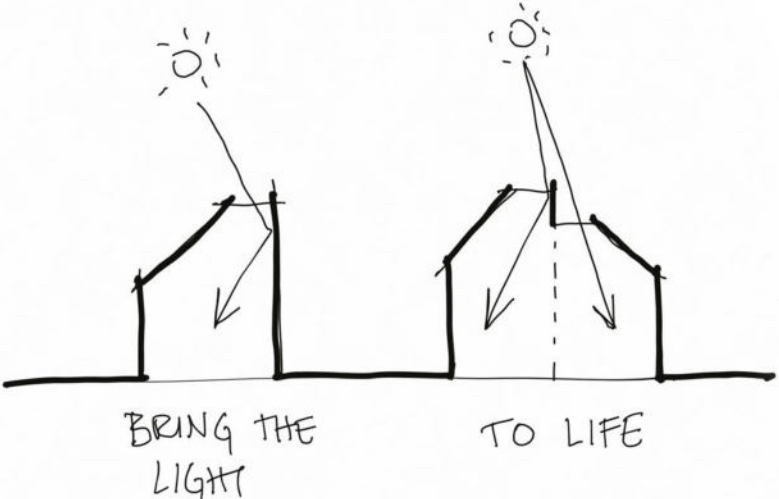
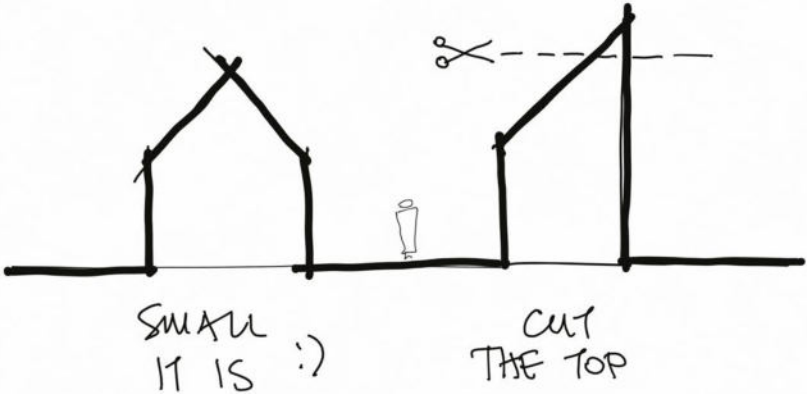
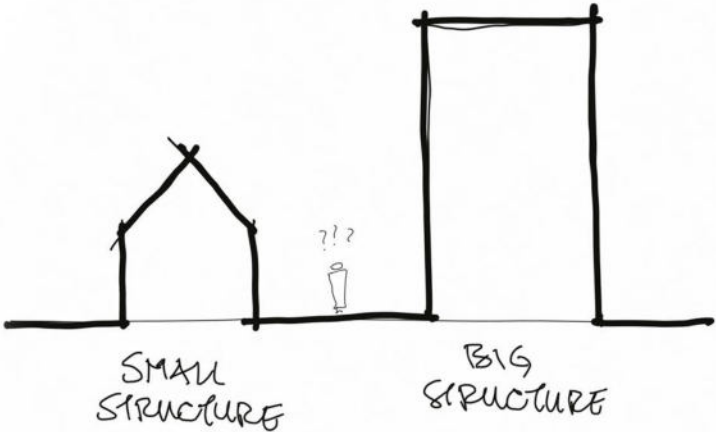
Project History

The Parents' House in Tuzla was initiated by the association **Srce za djecu koja boluju od raka** (Heart for Kids with Cancer), driven by a mission to provide dignified, free accommodation for children undergoing cancer treatment and their families. The architectural brief called for five residential units, shared communal spaces, and support zones, all within a limited footprint and budget, while minimizing environmental impact.

Inspired by Bosnian heritage, the design reinterprets the **sojenica** typology, elevating the structure on slender steel columns to preserve the landscape and ensure natural drainage. This modular composition of four house-like volumes represents a departure from sterile, institutional architecture, offering warmth, privacy, and community in a familiar, home-like setting. The project embodies a rethinking of care architecture—prioritizing emotional support, dignity, and cultural continuity while embracing sustainable design principles.

Through thoughtful spatial planning, passive energy strategies, and low-impact construction methods, Roditeljska Kuća stands as a testament to how architecture can provide not just shelter, but profound emotional and psychological support for families in need.

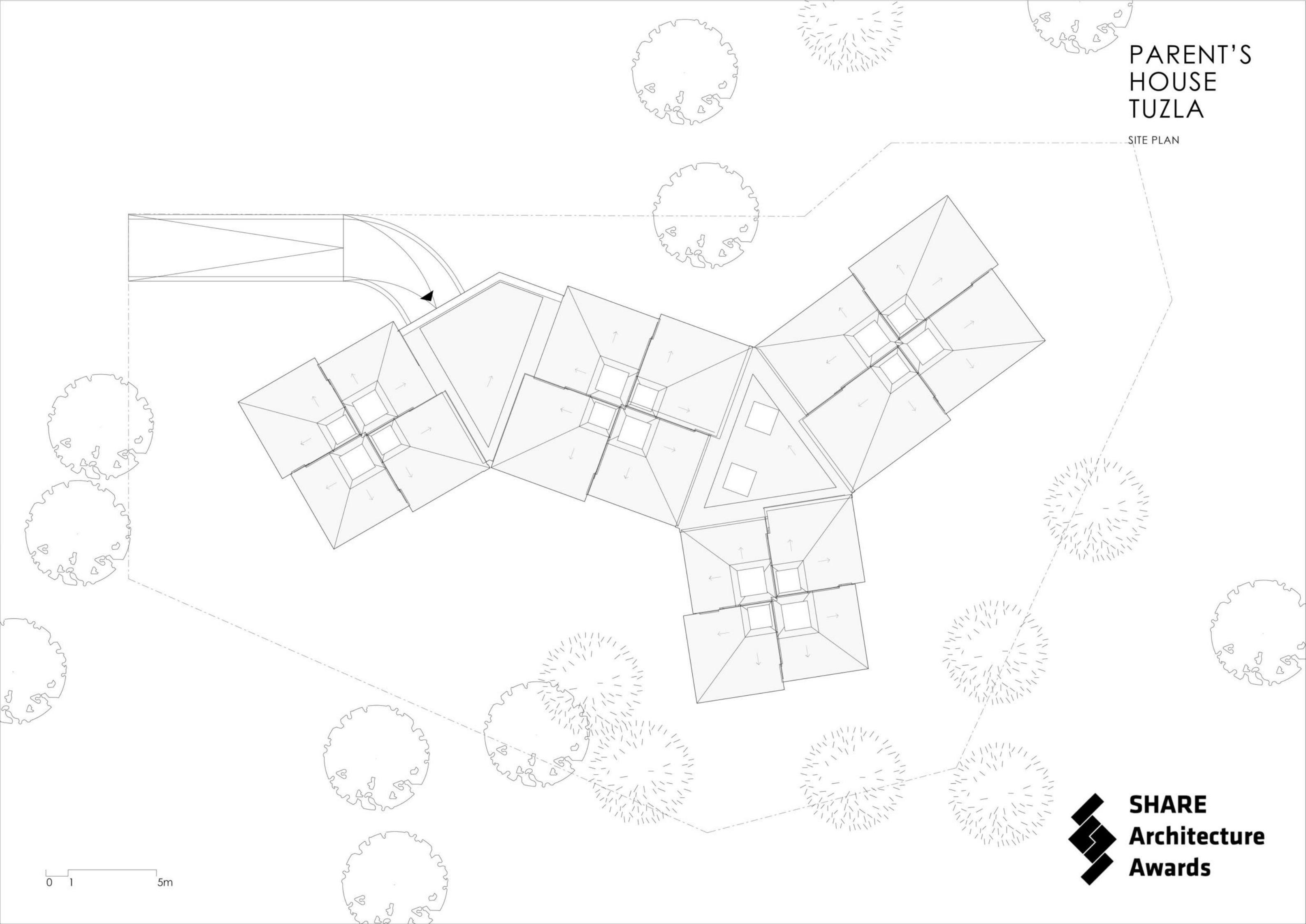
PARENT'S
HOUSE
TUZLA



SMALL VILLAGE

PARENT'S HOUSE TUZLA

SITE PLAN



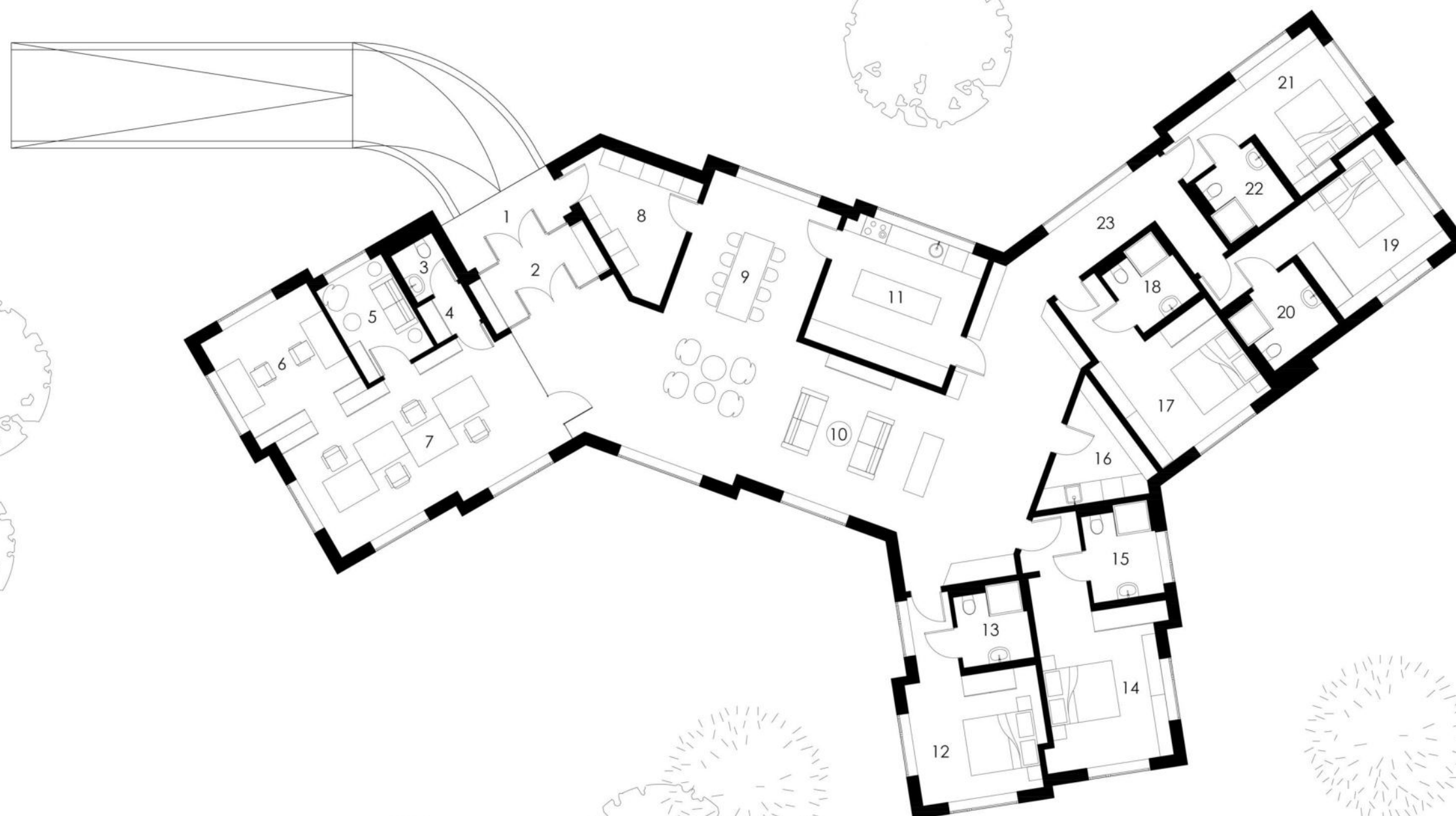
0 1 5m



SHARE
Architecture
Awards

PARENT'S HOUSE TUZLA

FLOOR PLAN



- 01 ENTRANCE
- 02 VESTIBULE
- 03 TOILET
- 04 STORAGE 1
- 05 OFFICE 1
- 06 OFFICE 2
- 07 OFFICE 3
- 08 STORAGE 2
- 09 DINING ROOM
- 10 LIVING ROOM
- 11 KITCHEN
- 12 APARTMENT 1
- 13 BATHROOM 1
- 14 APARTMENT 2
- 15 BATHROOM 2
- 16 LAUNDRY
- 17 APARTMENT 3
- 18 BATHROOM 3
- 19 APARTMENT 4
- 20 BATHROOM 4
- 21 APARTMENT 5
- 22 BATHROOM 5
- 23 HALLWAY

0 1 5m



SHARE
Architecture
Awards

PARENT'S HOUSE TUZLA

SECTION



0 1 5m



SHARE
Architecture
Awards

PARENT'S HOUSE TUZLA

SOUTH ELEVATION



0 1 5m



**SHARE
Architecture
Awards**

PARENT'S HOUSE TUZLA

EAST ELEVATION



0 1 5m



**SHARE
Architecture
Awards**

PARENT'S
HOUSE
TUZLA



PARENT'S
HOUSE
TUZLA



SHARE
Architecture
Awards

PARENT'S
HOUSE
TUZLA



PARENT'S
HOUSE
TUZLA



SHARE
Architecture
Awards

PARENT'S
HOUSE
TUZLA



SHARE
Architecture
Awards

PARENT'S
HOUSE
TUZLA



SHARE
Architecture
Awards

PARENT'S
HOUSE
TUZLA





PARENT'S
HOUSE
TUZLA



PARENT'S
HOUSE
TUZLA