

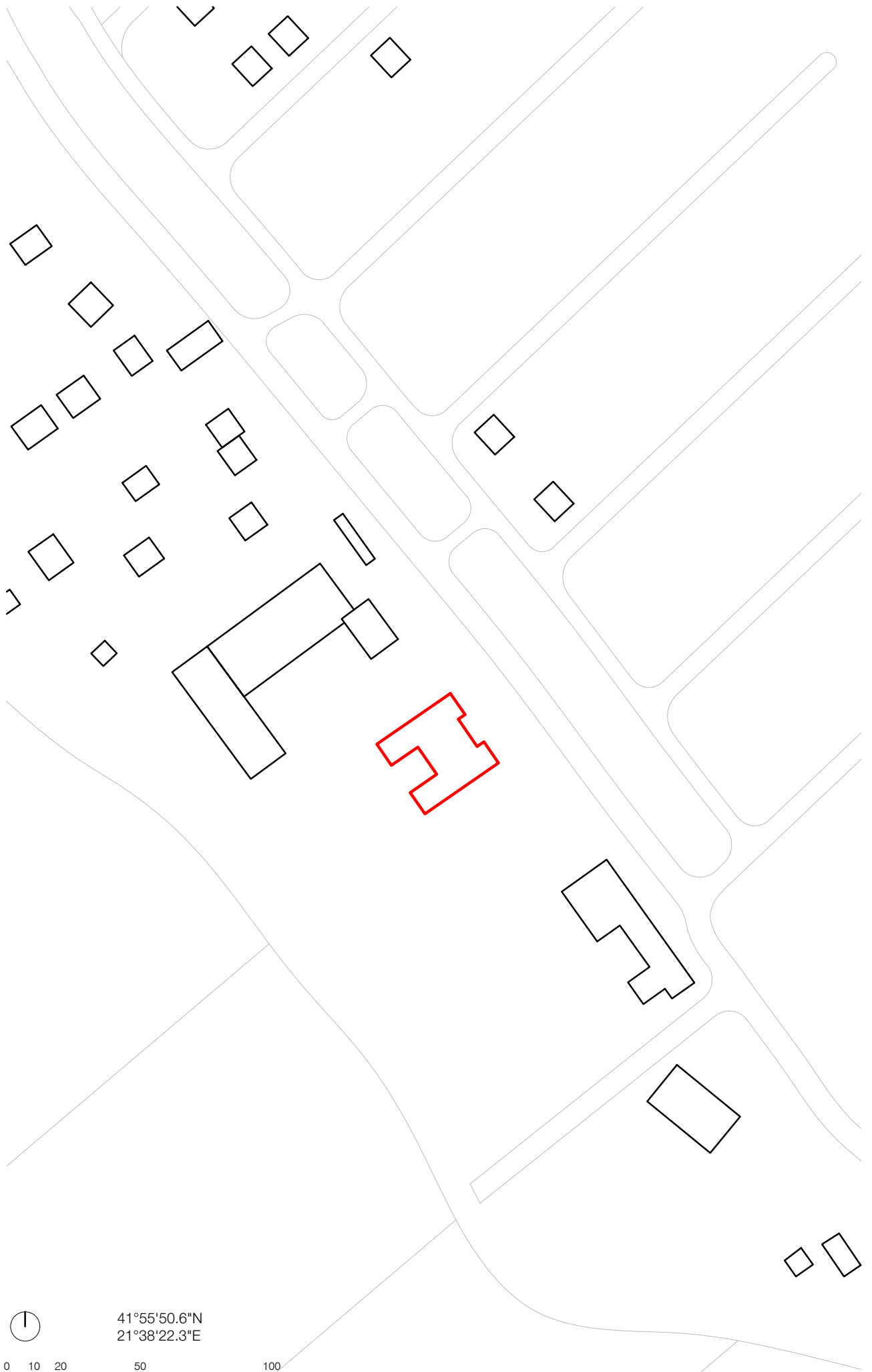
# MULTI-USE BUILDING IN SKOPJE



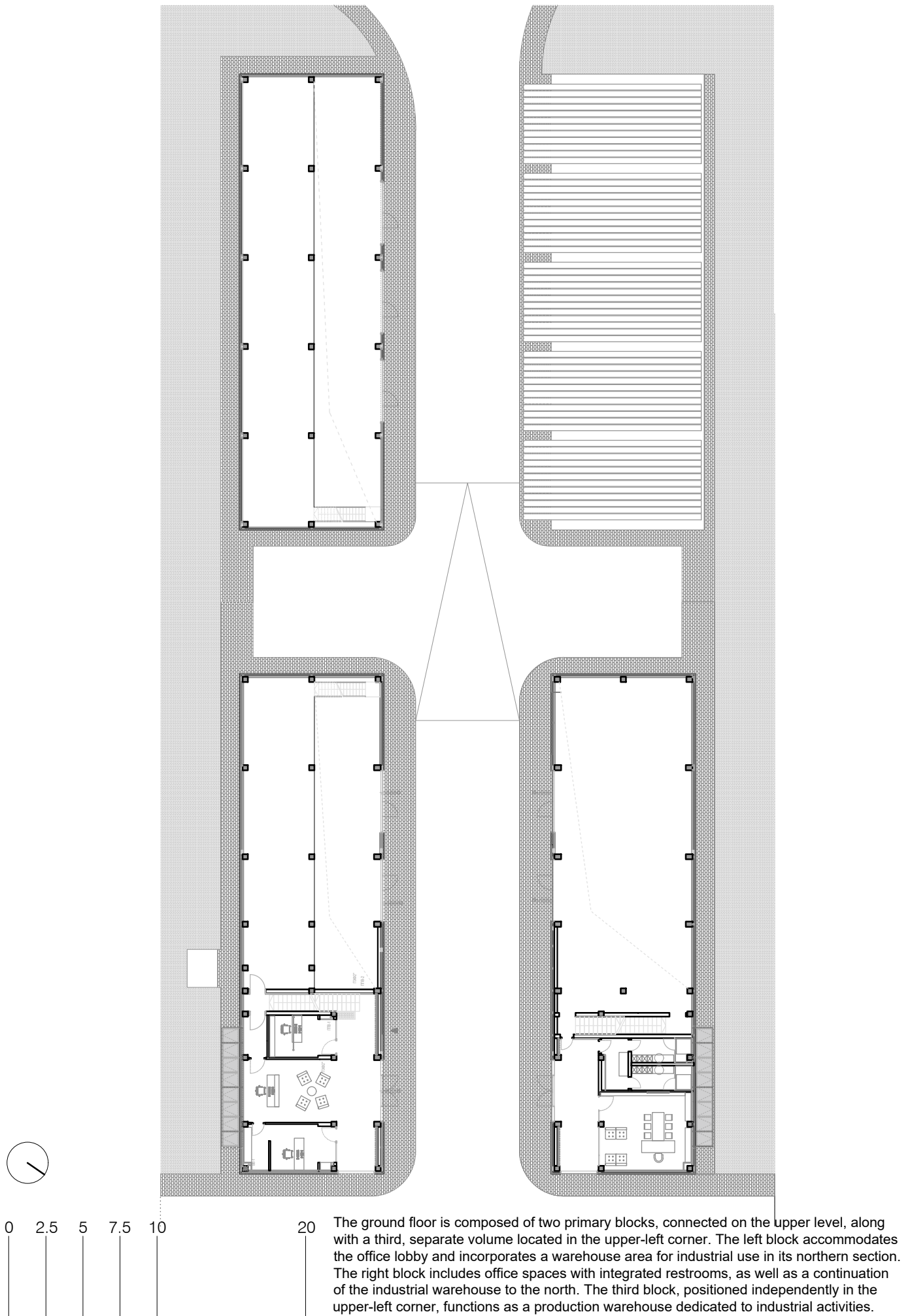
The facility is situated within an industrial zone southeast of the Municipality of Petrovec, in the village of Ržaničino. It adopts a pavilion-like layout on a steeply sloped terrain descending from northeast to southwest. The site is framed by low vegetation on the southeast, industrial developments to the northeast and southwest, and a small cluster of individual residential dwellings on the northwest side.

The architectural concept emerges from a deliberate synthesis of topography, contextual surroundings, and a multifunctional program intended to simultaneously serve various user groups. This strategic integration of site and program forms the foundation of the design approach.

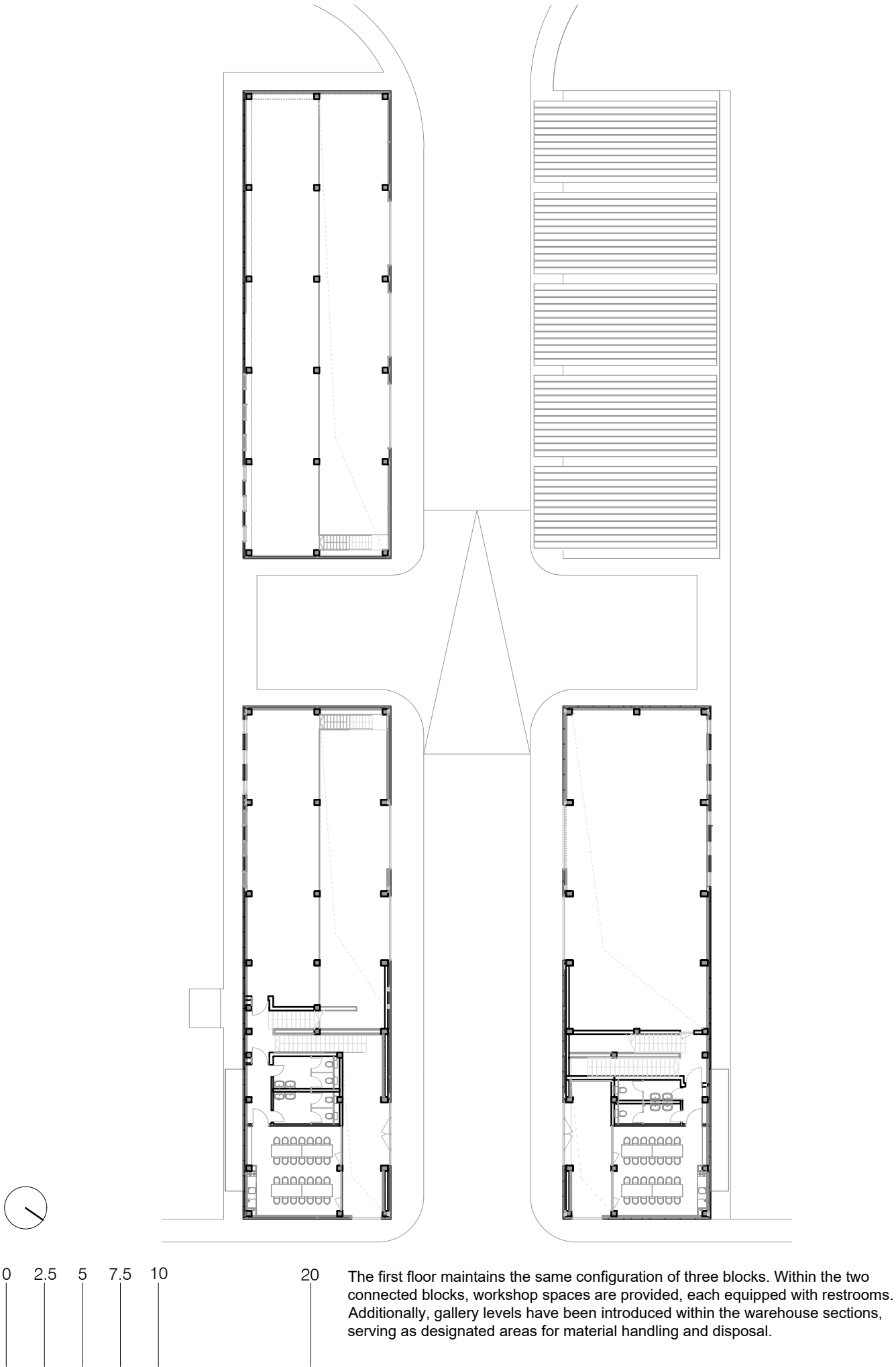
The result is a composition of pavilion-type structures with rectangular footprints—four solid prisms aligned in parallel along the longitudinal edges of the site, allocated for industrial use. These volumes are positioned on a structural platform that accommodates gallery spaces, while a perforated prism introduces vegetation into the interior, fostering visual continuity and spatial permeability. Atriums are incorporated within this elevated volume to bring daylight and define spaces intended for administrative functions.



## Floor plan +0.00

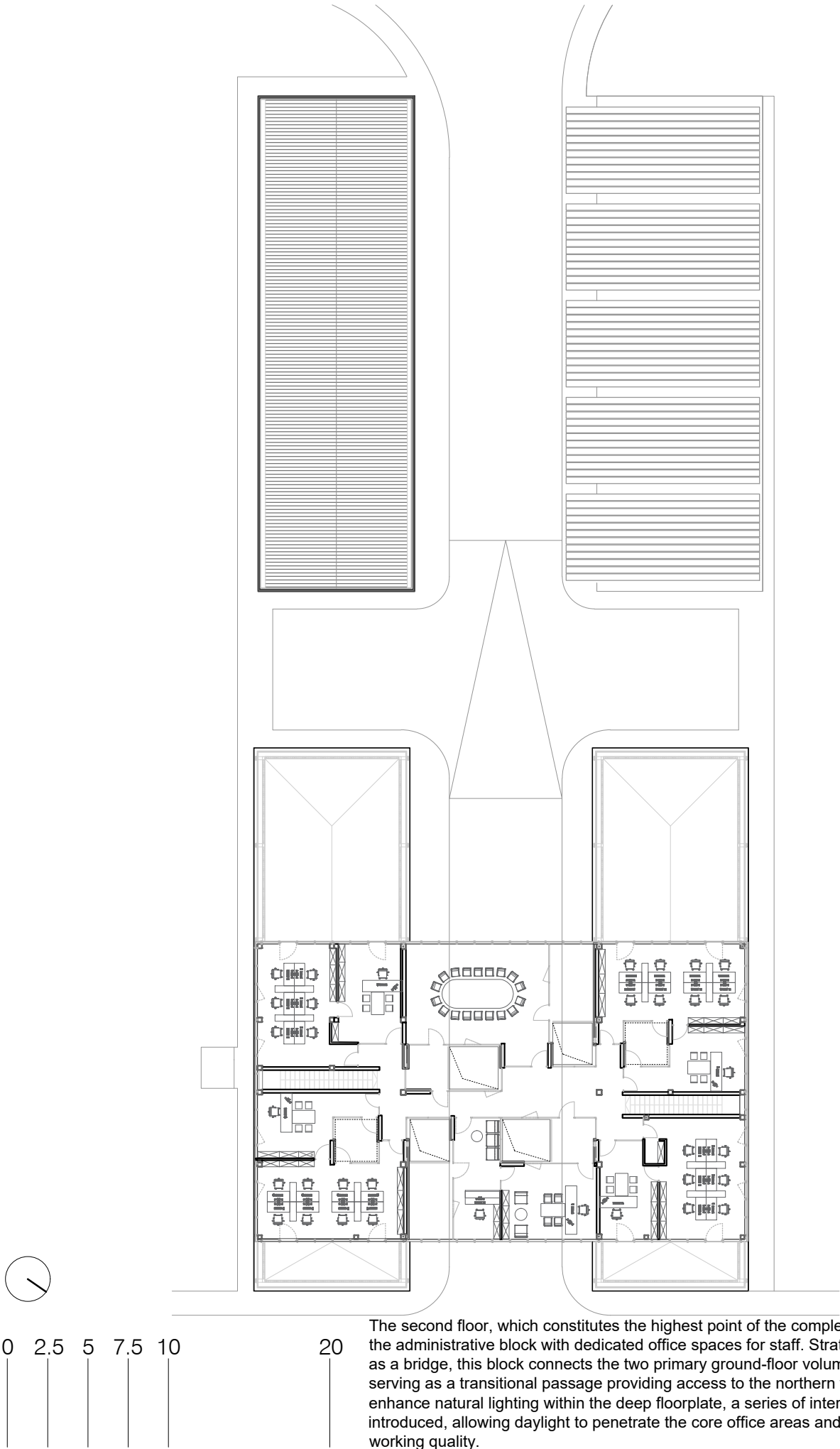


Floor plan +3.50



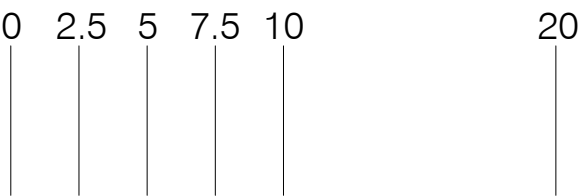
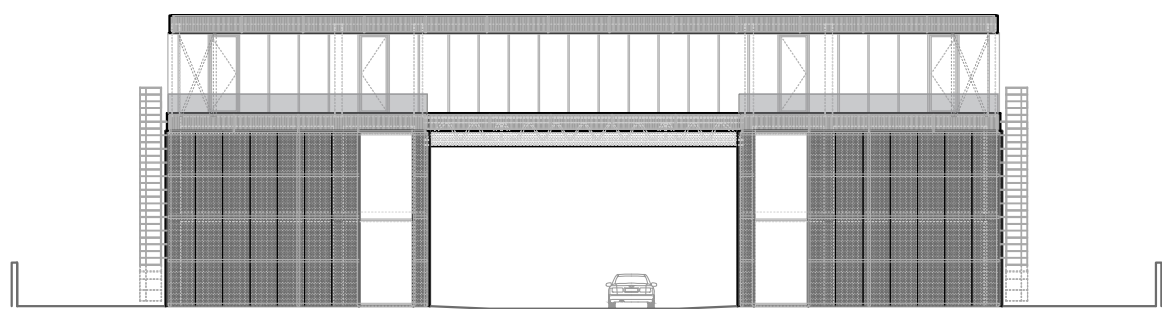
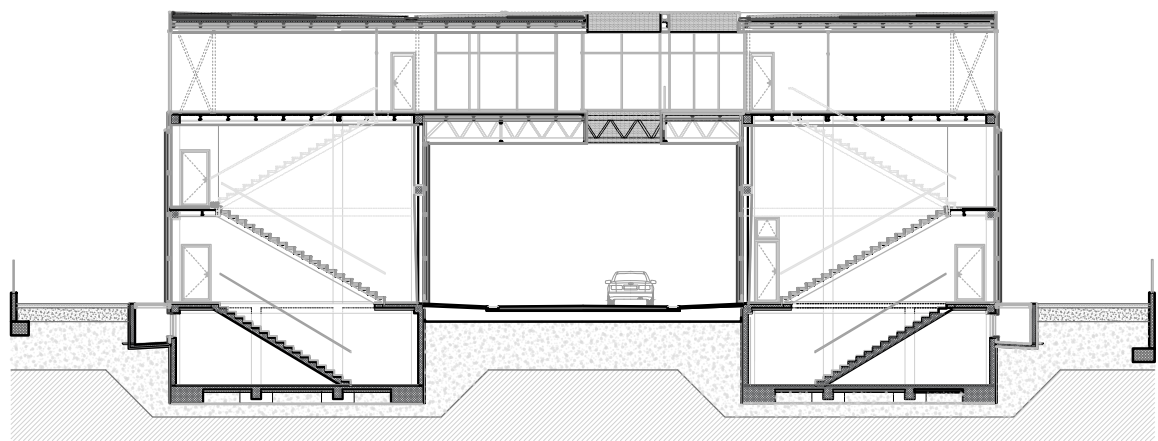


Floor plan +7.00

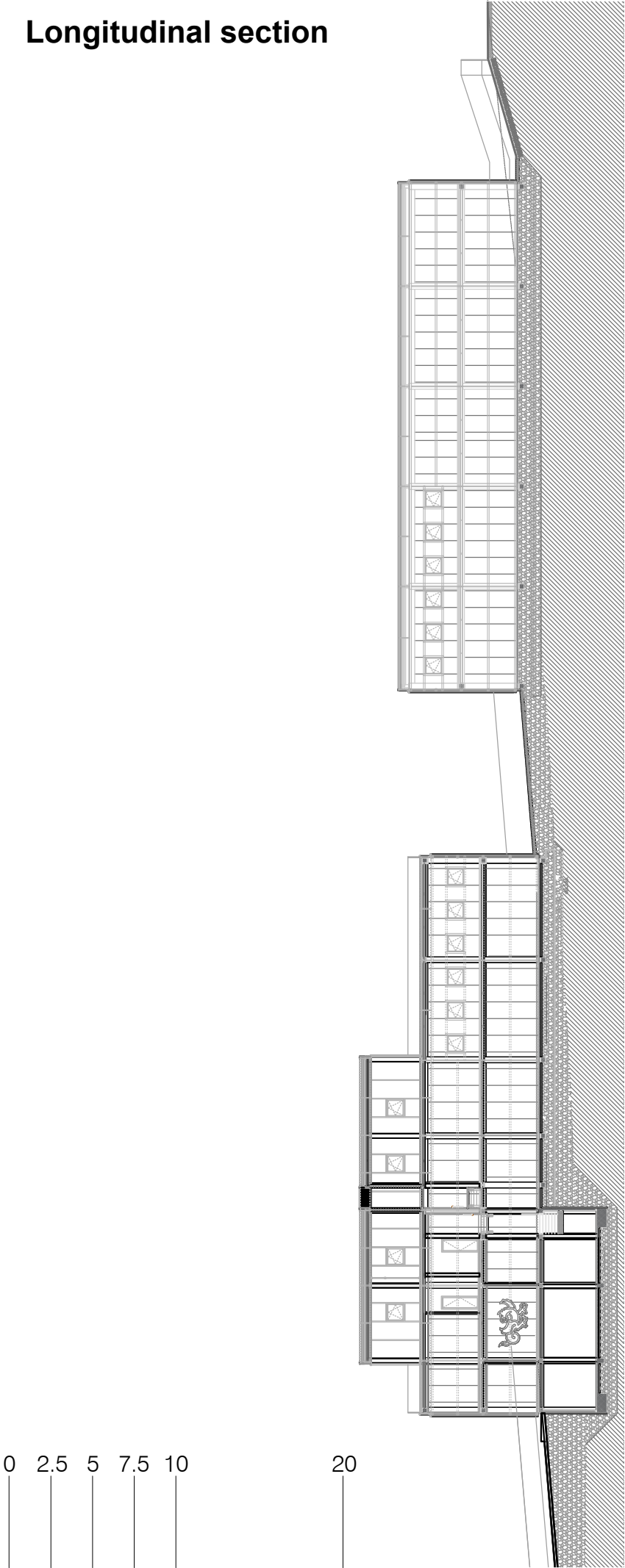


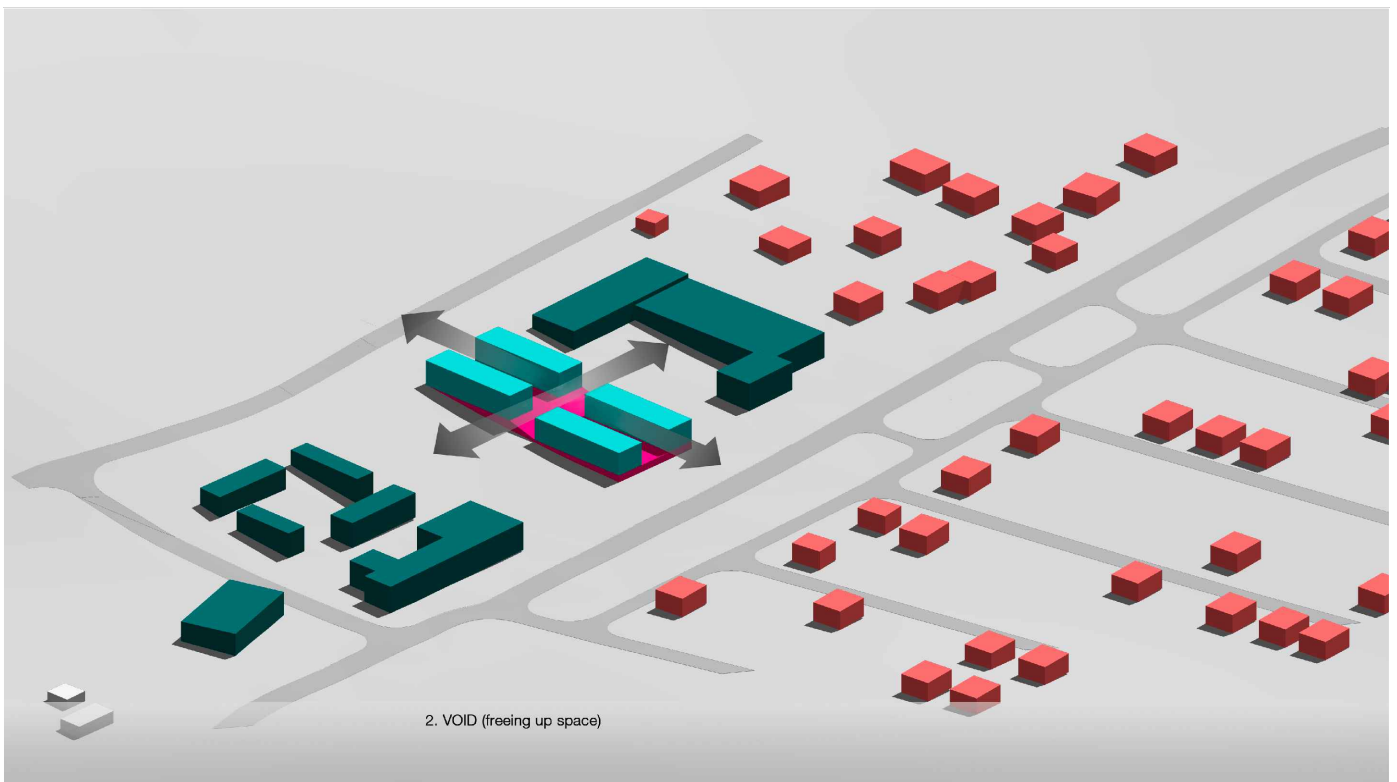
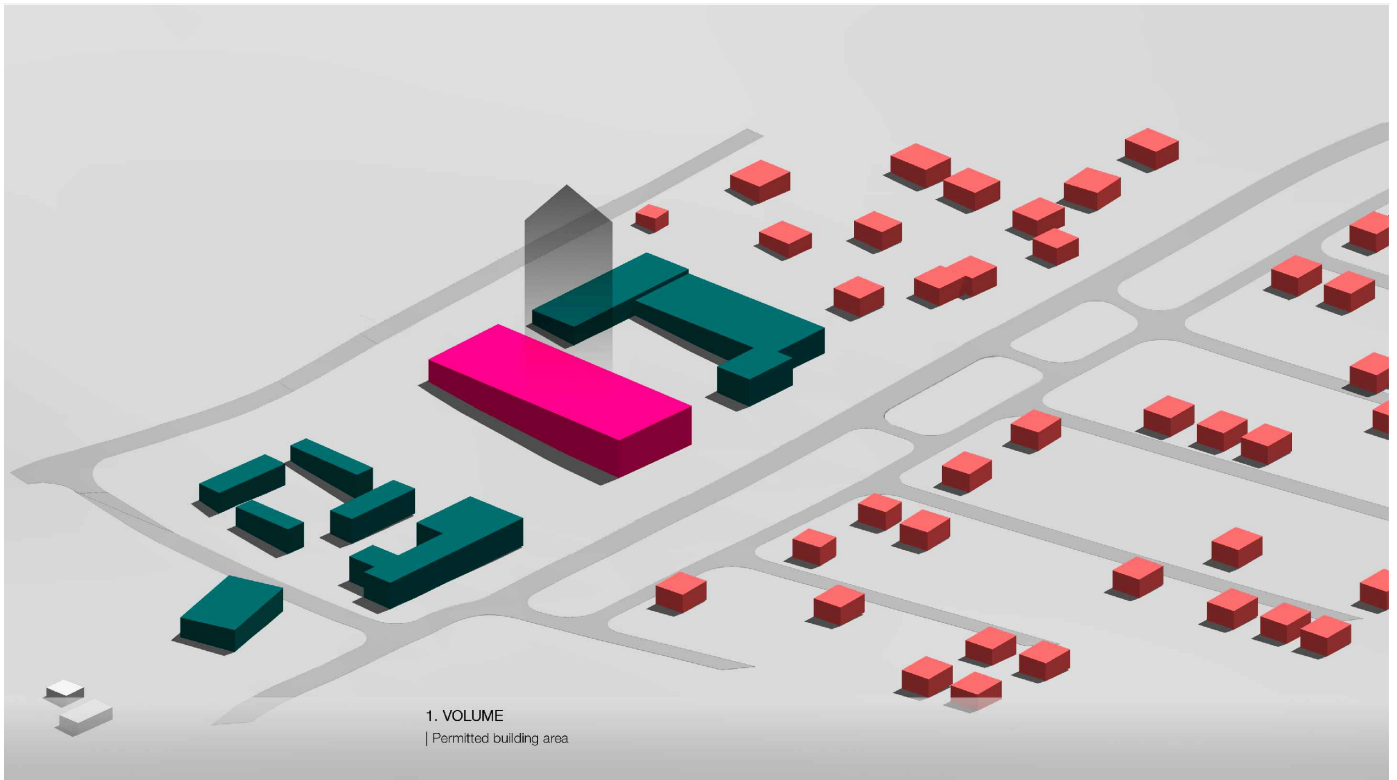
The second floor, which constitutes the highest point of the complex, accommodates the administrative block with dedicated office spaces for staff. Strategically designed as a bridge, this block connects the two primary ground-floor volumes, while also serving as a transitional passage providing access to the northern warehouse. To enhance natural lighting within the deep floorplate, a series of internal atriums are introduced, allowing daylight to penetrate the core office areas and improve spatial working quality.

Cross section and elevation

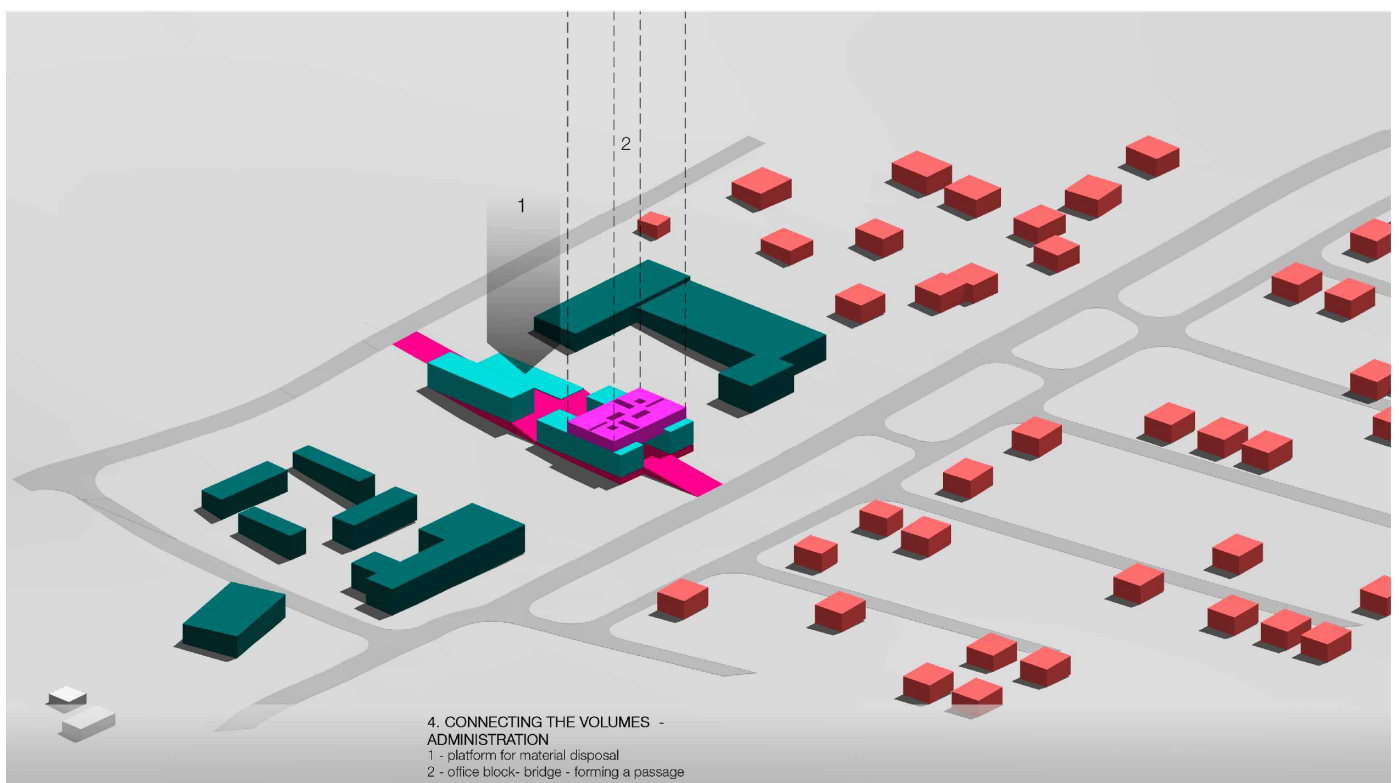
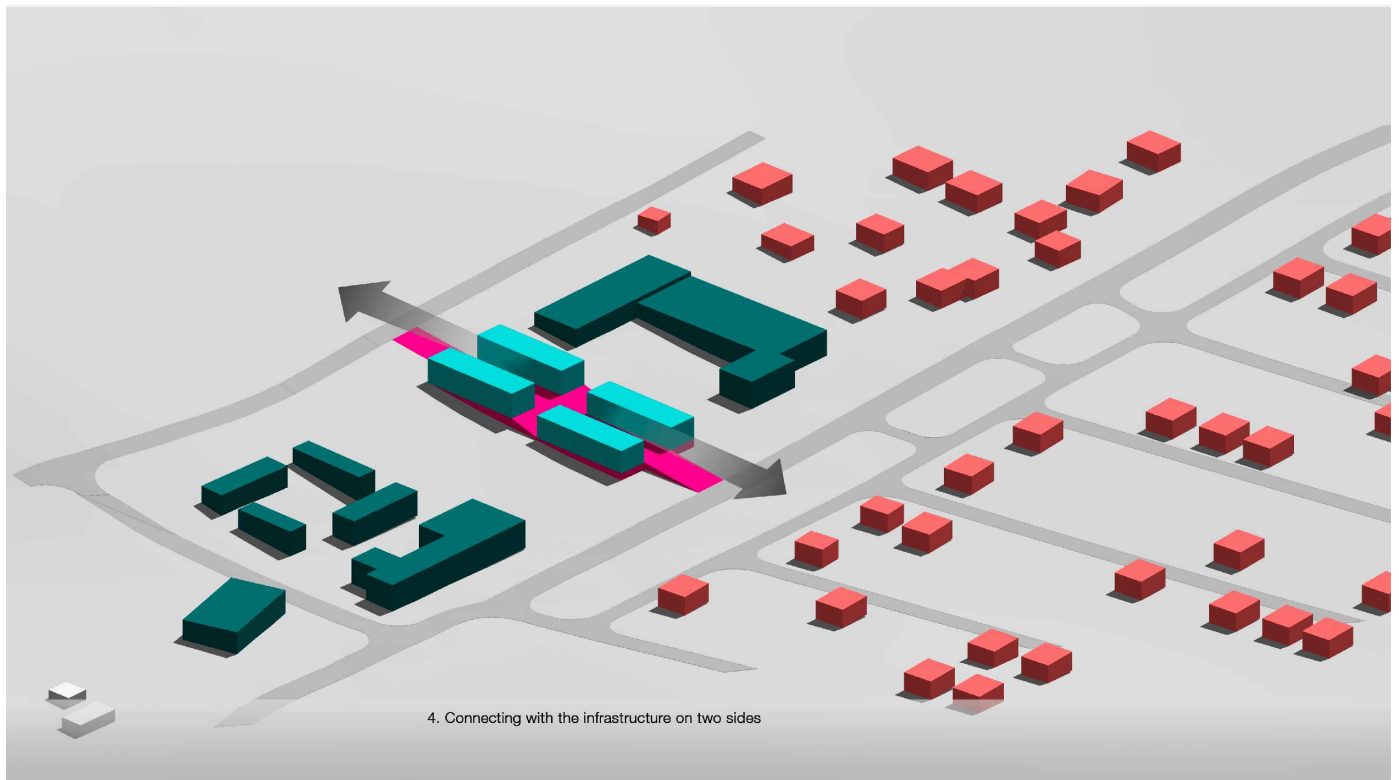


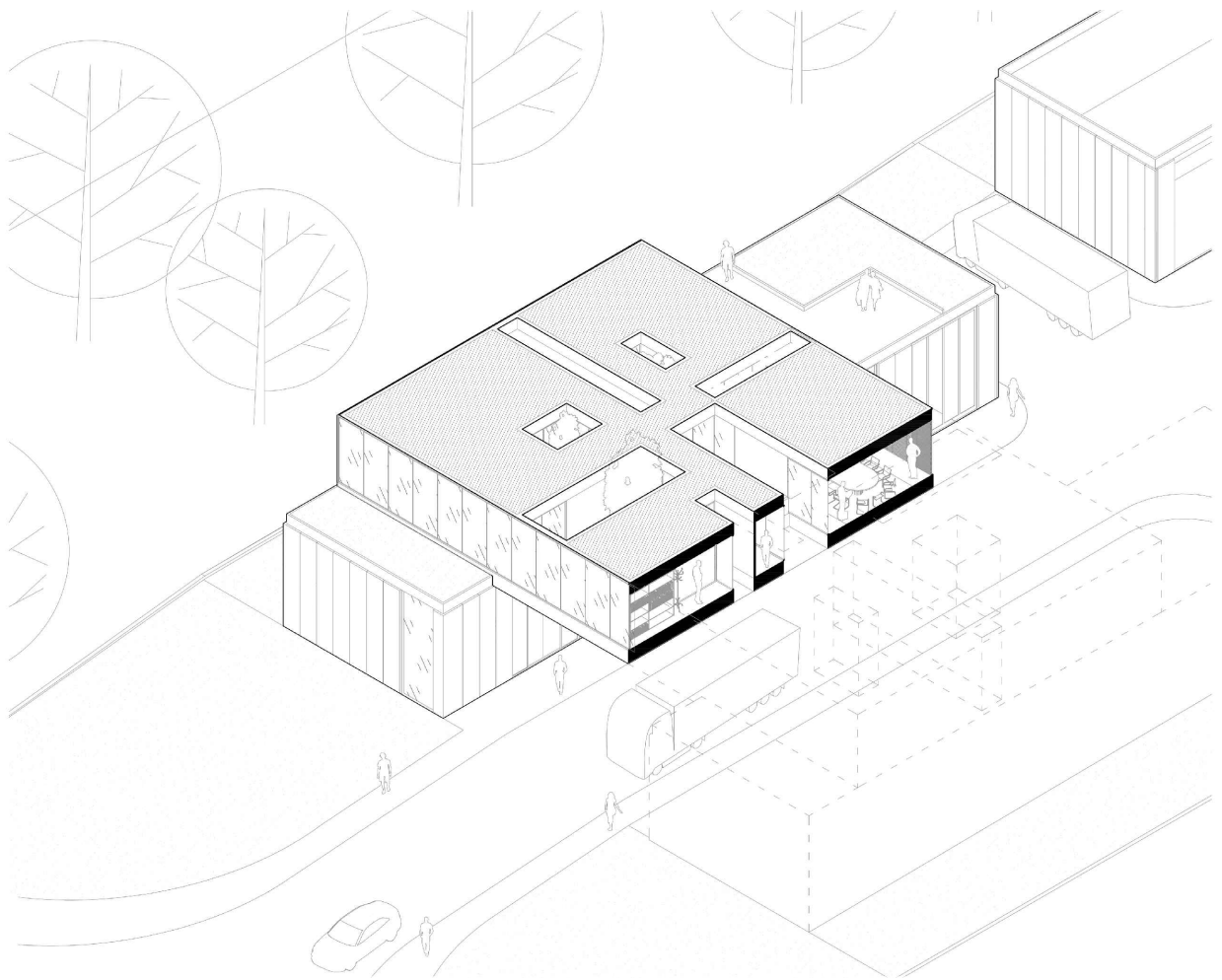
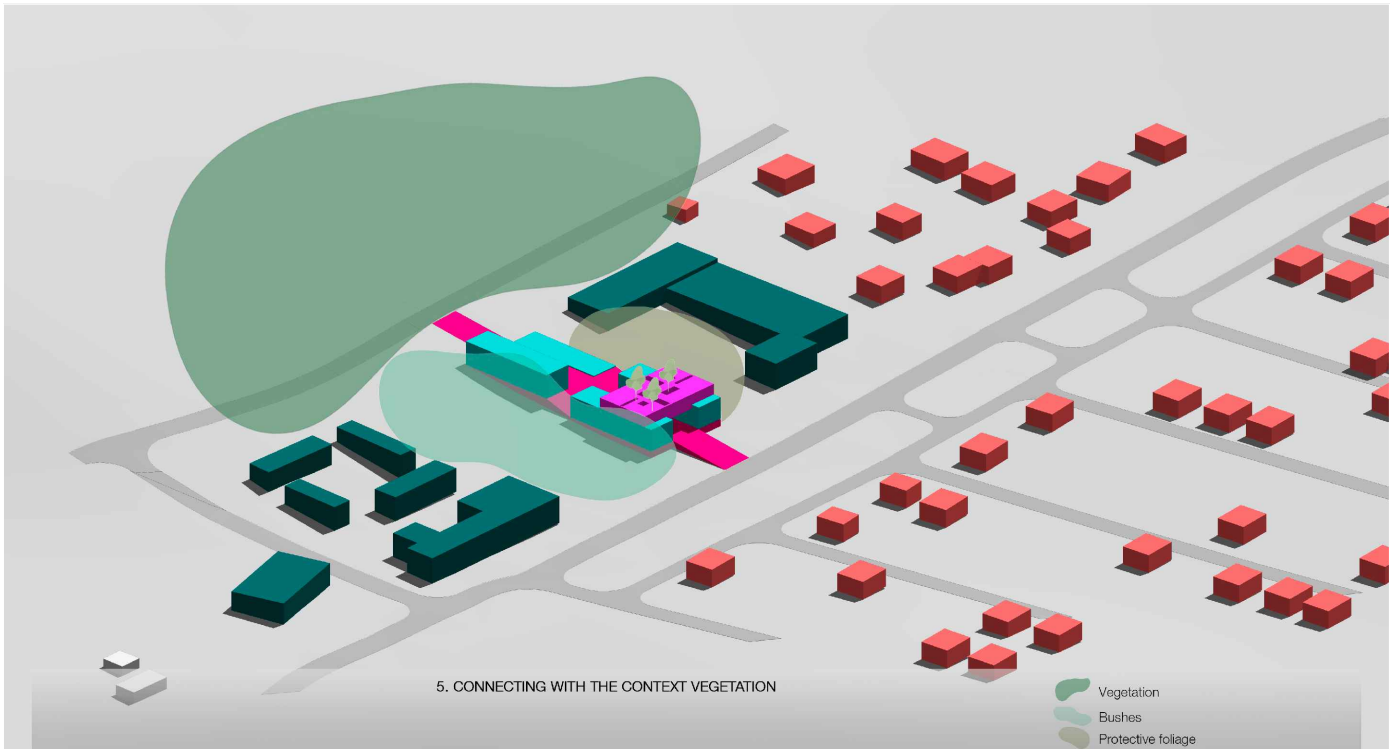
Longitudinal section



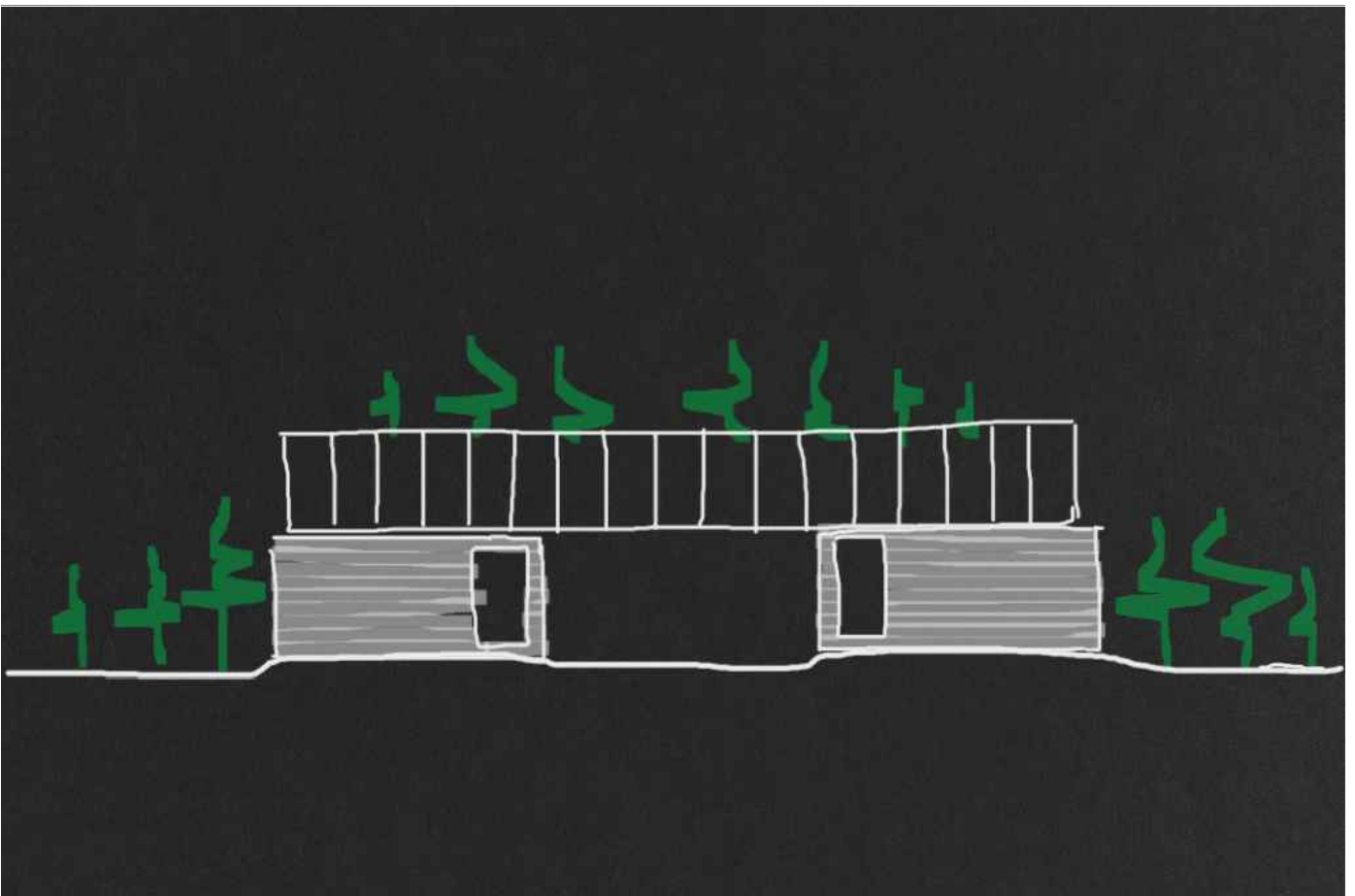






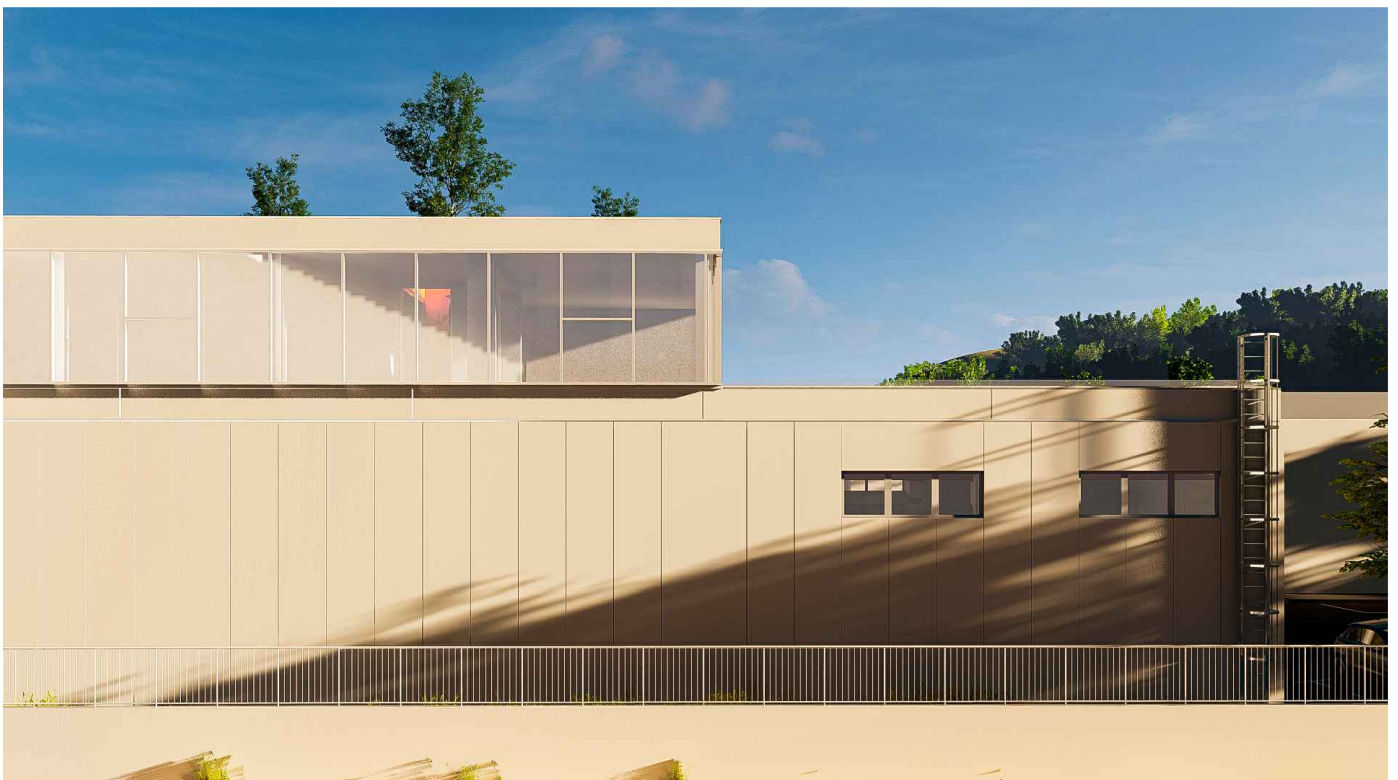


**Integrating surrounding vegetation into the interior spaces to establish a seamless connection between the built environment and nature.**





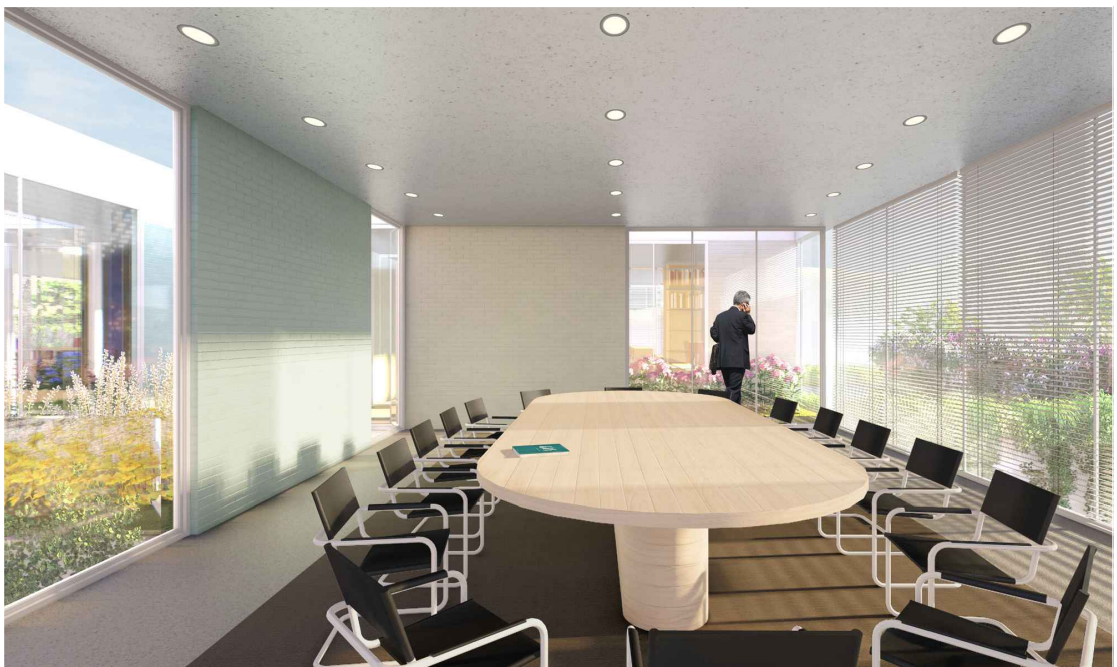
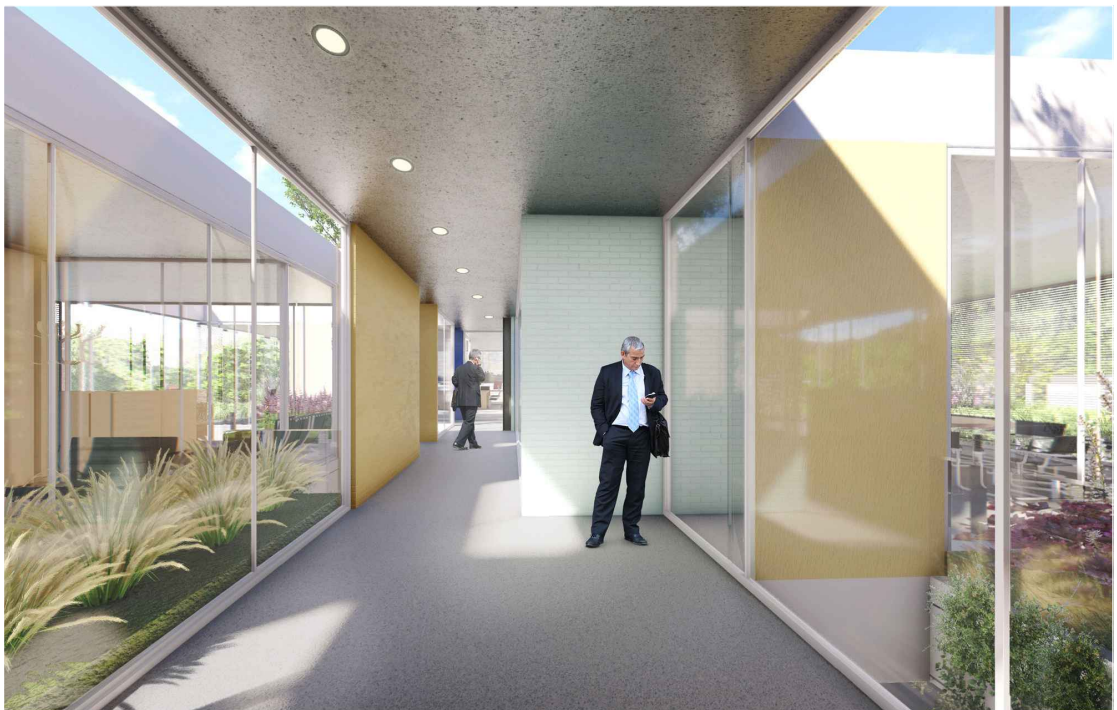
## 3D visualisations













# Photographies







