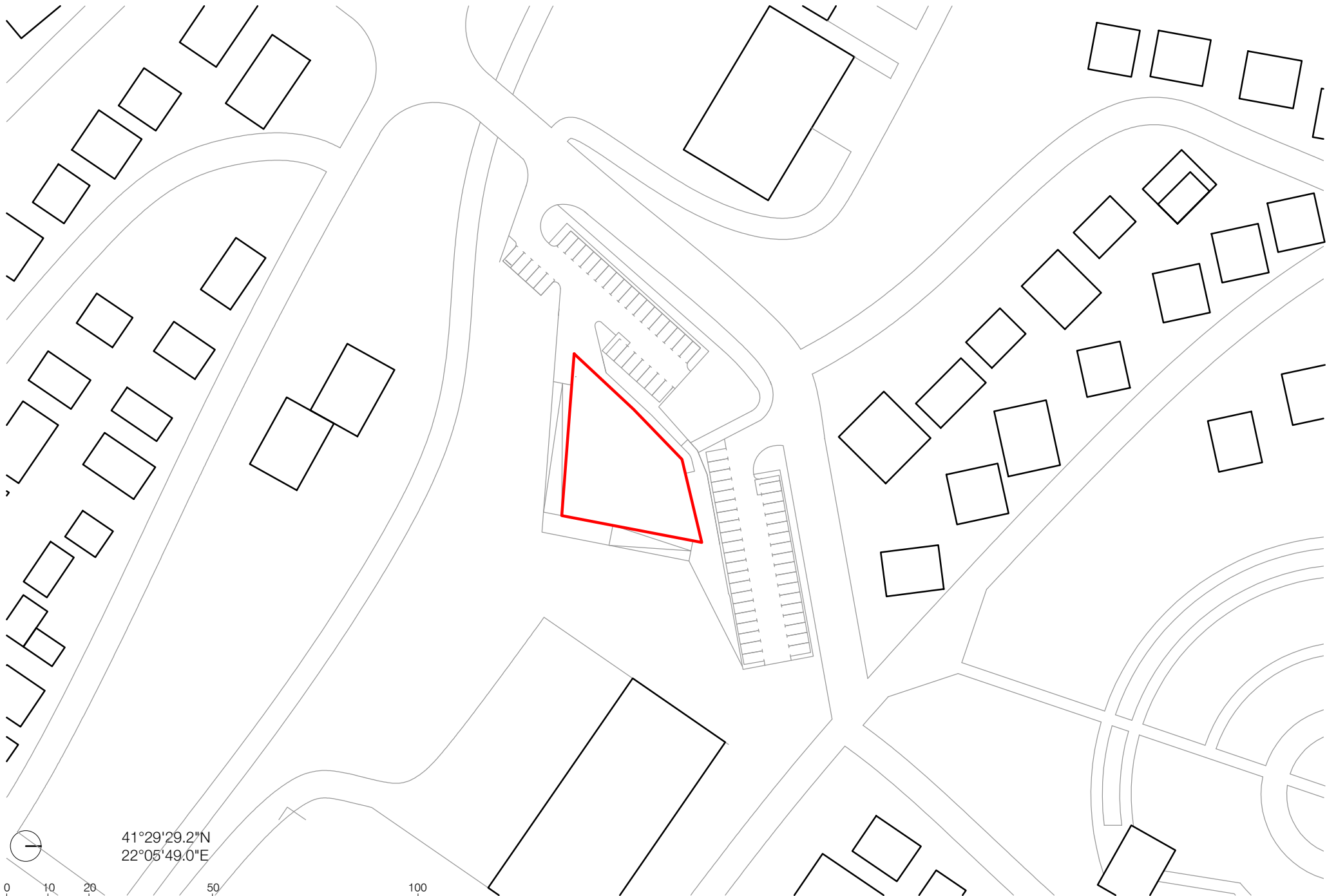
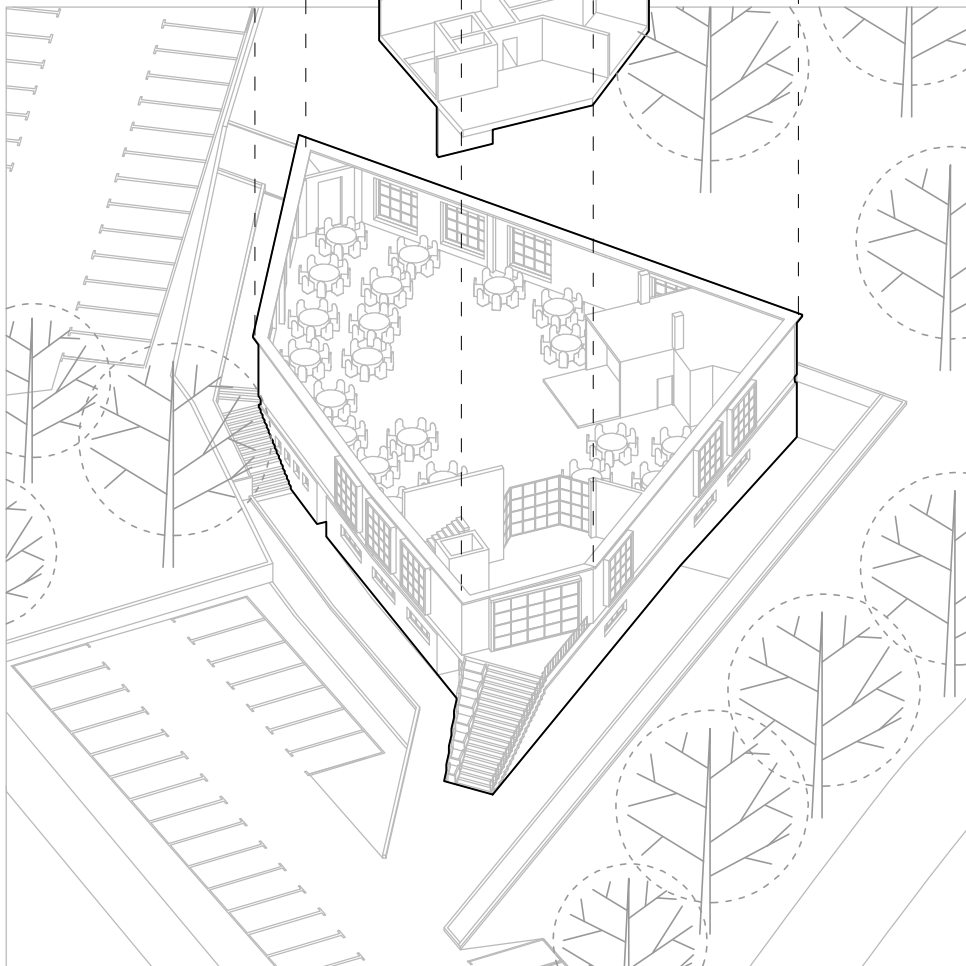
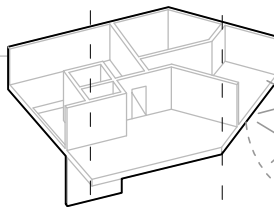
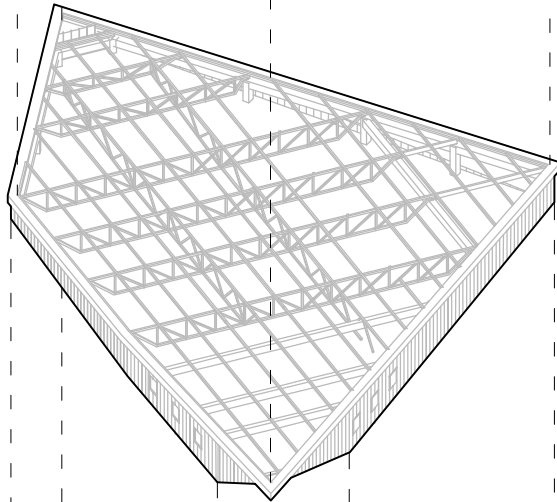
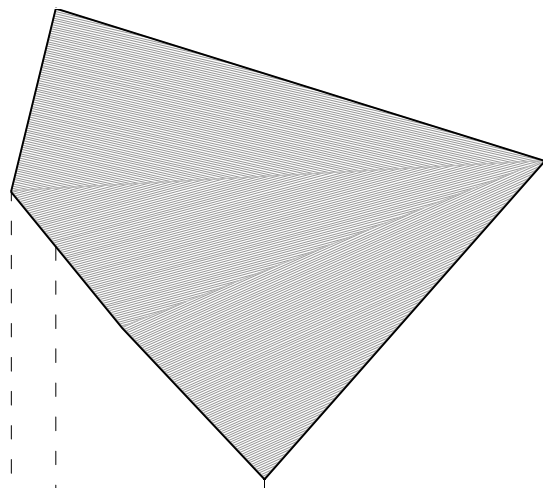


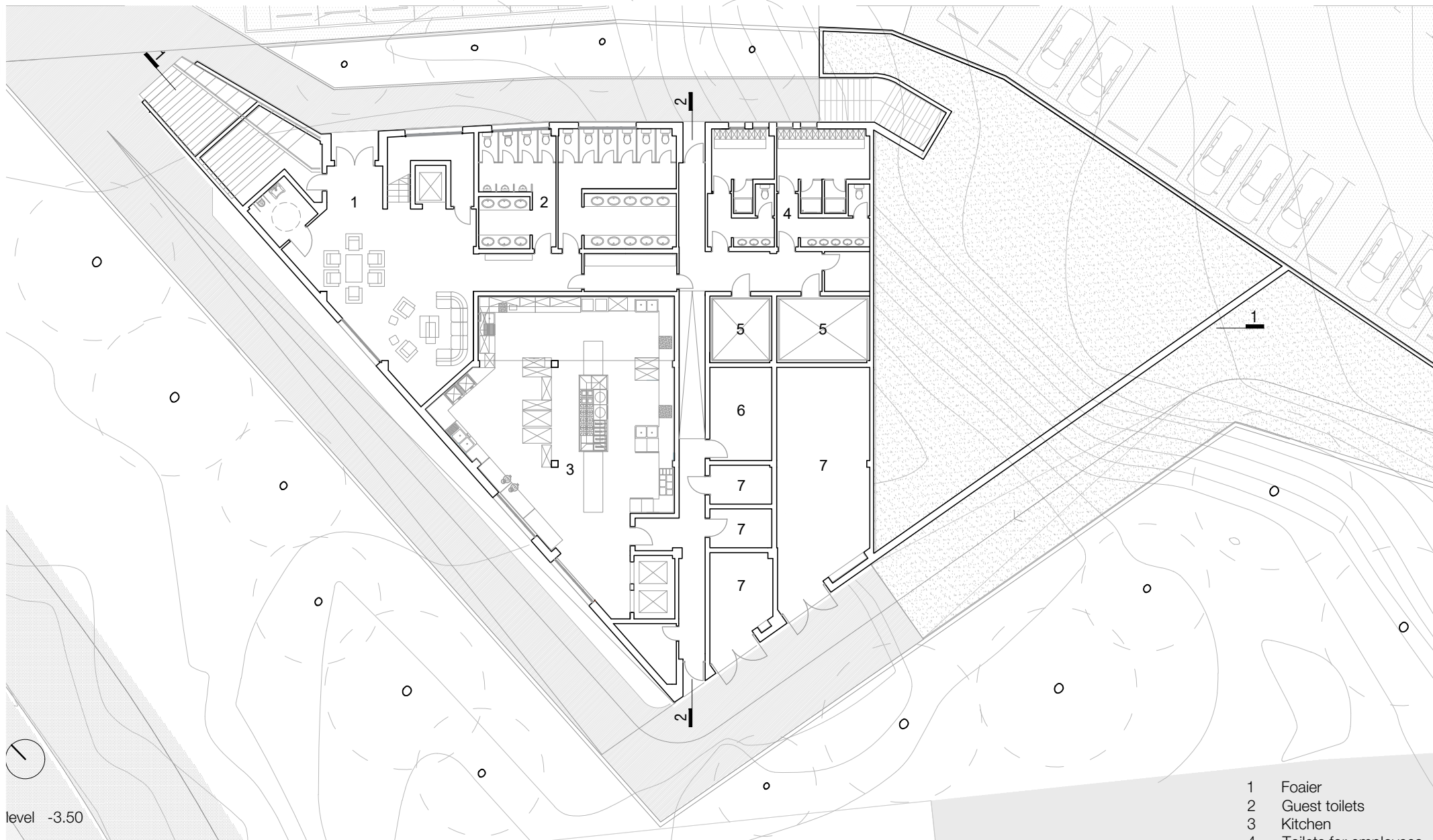
RESTAURANT IN NEGOTINO

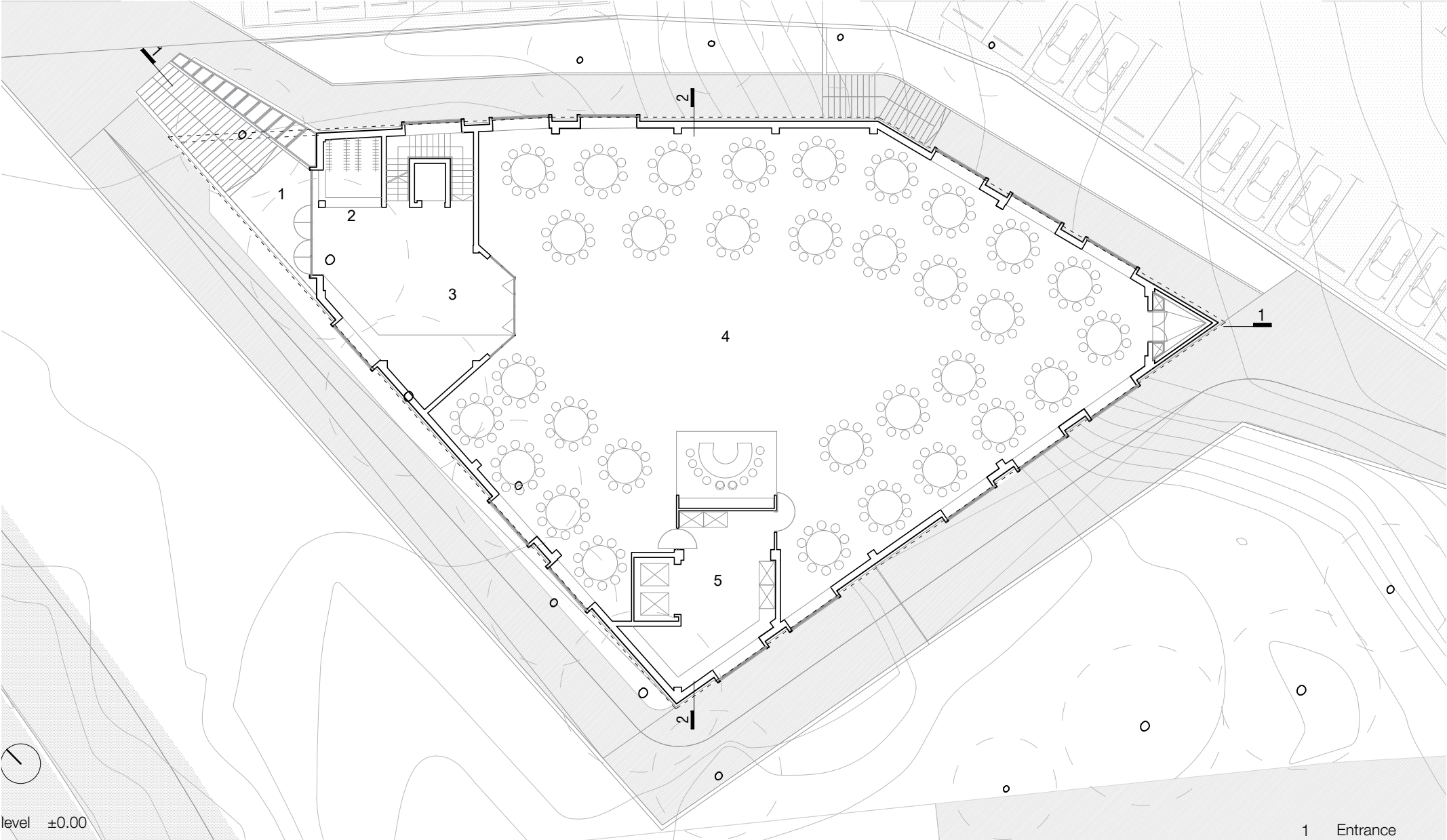
Situated in northern Negotino, the building occupies a prominent corner site along the main city entrance, reinforcing its role as a civic landmark. Positioned on a steep slope, the structure is surrounded by forest, recreational areas, public facilities, and scattered housing. The design emerges from the synergy between site topography, context, and program, generating a convex polygonal volume across three structural levels. A dominant mass on the north emphasizes the entrance through a grand staircase. The spatial model features a tripartite material composition: a grounded stone base, a semi-transparent glazed middle with deep openings, and a light upper volume expressing interior activity. The layout accommodates multiple functions with potential for adaptive reuse, including a restaurant, event hall, guest lobby, and service zones with separate access, ensuring flexibility and inclusive design.



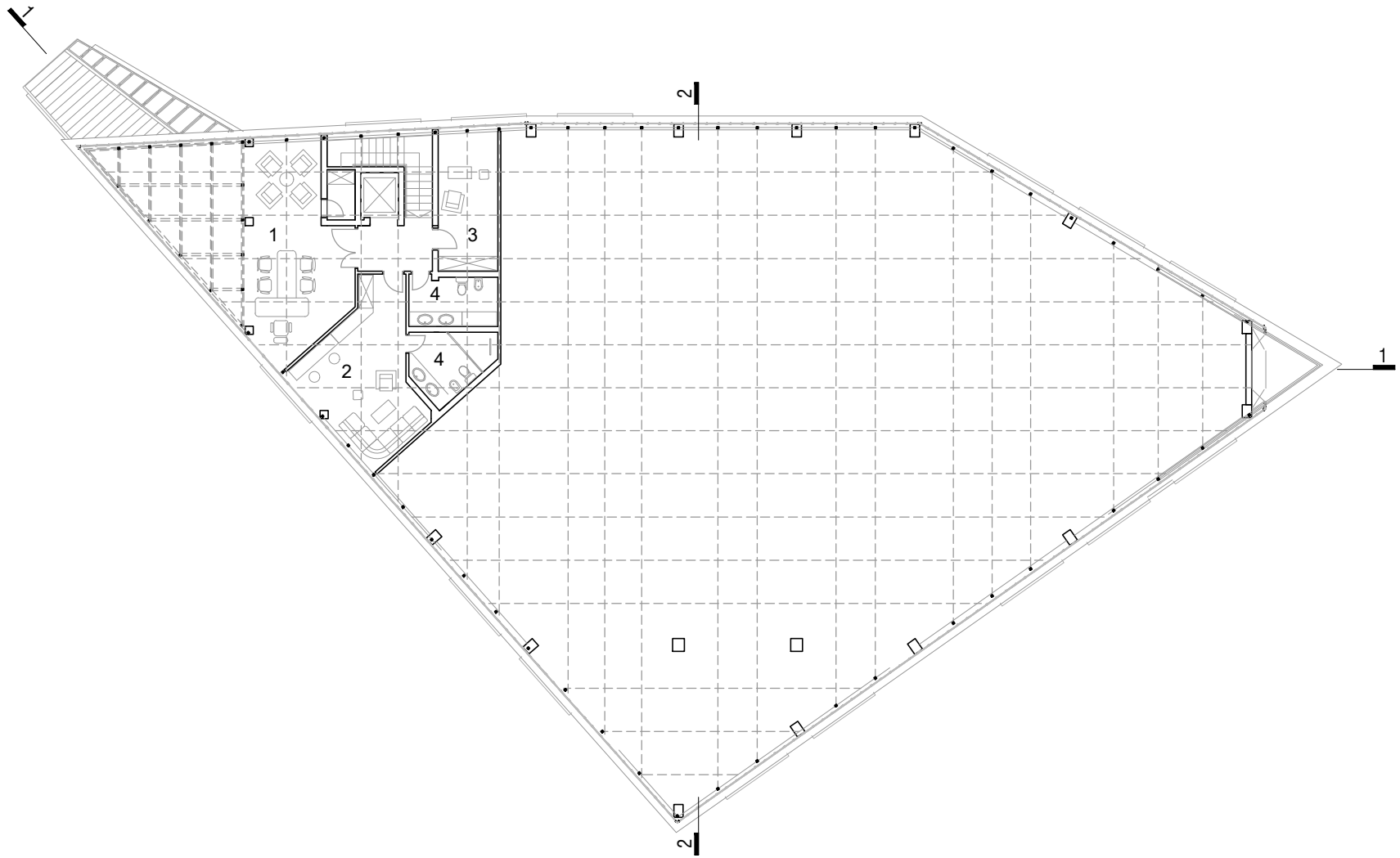
41°29'29.2"N
22°05'49.0"E







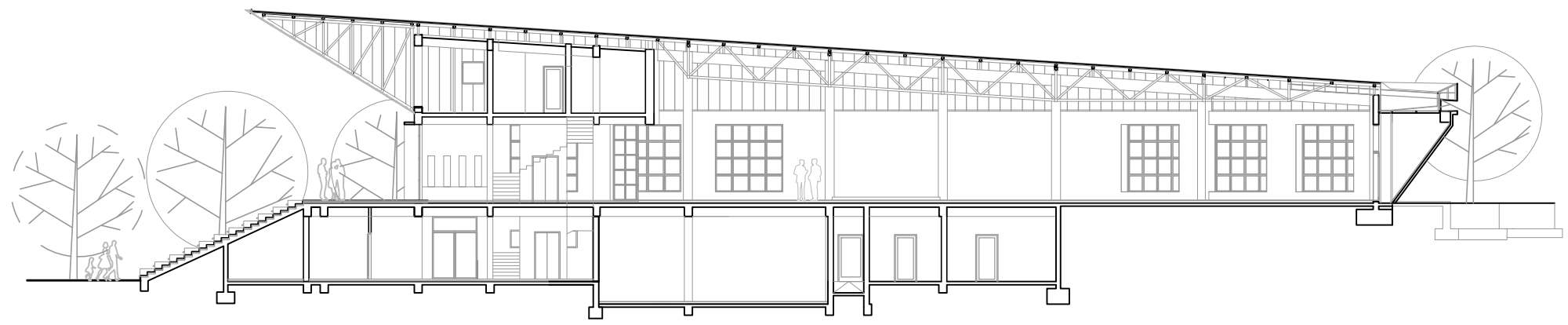
- 1 Entrance
- 2 Wardrobe
- 3 Foyer
- 4 Main hall
- 5 Distributive kitchen



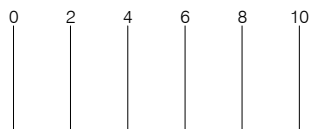
level +4.00

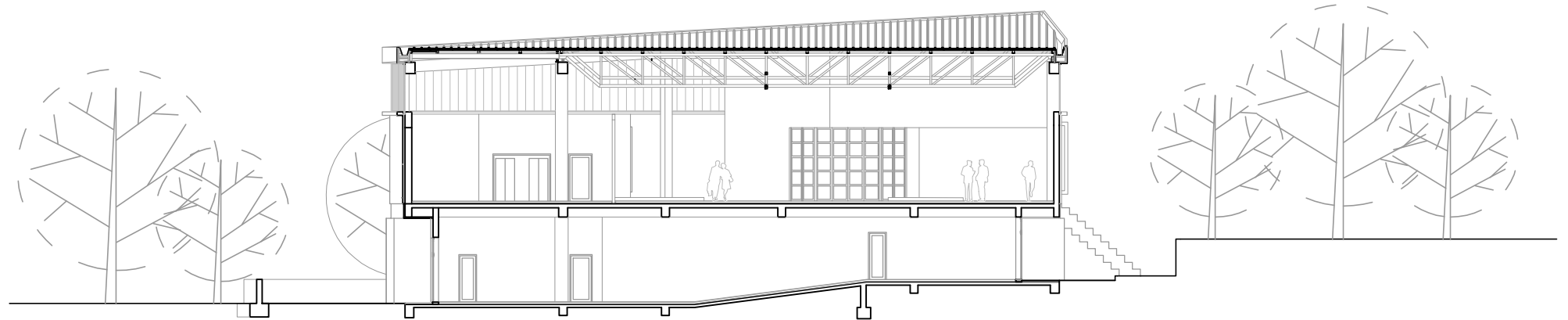
0 2 4 6 8 10

- 1 Office
- 2 Apartment
- 3 Nursing room
- 4 Toilet



section 1-1

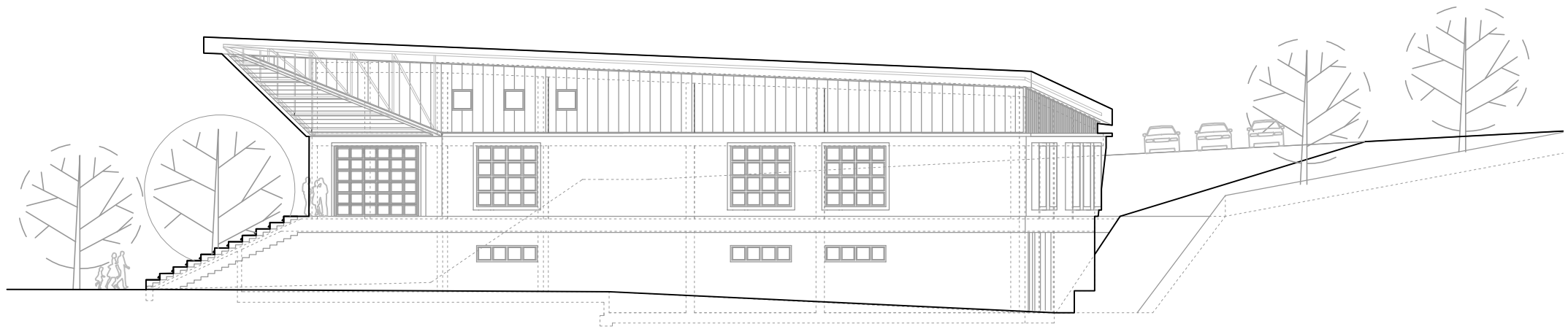




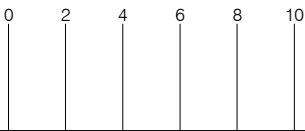
section 2-2

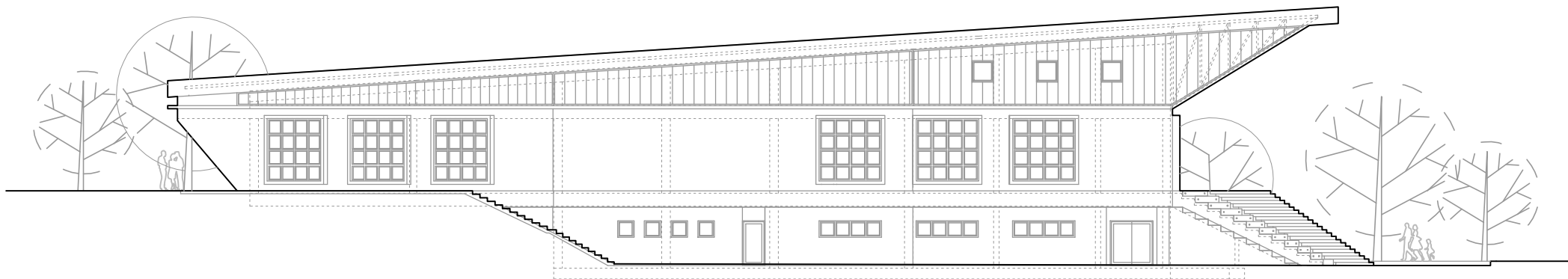
0 2 4 6 8 10





south-west elevation





north elevation

0 2 4 6 8 10



