



HOUSE TRANSFORMATIONS:
REDEFINING SPACES WITH STYLE- **H97**



LOCATION

source: GOOGLE MAPS

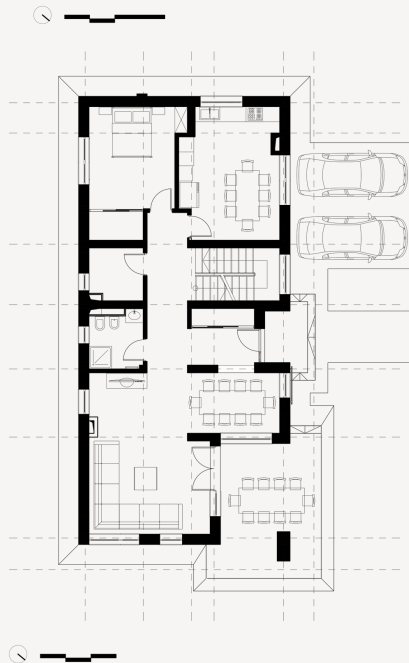
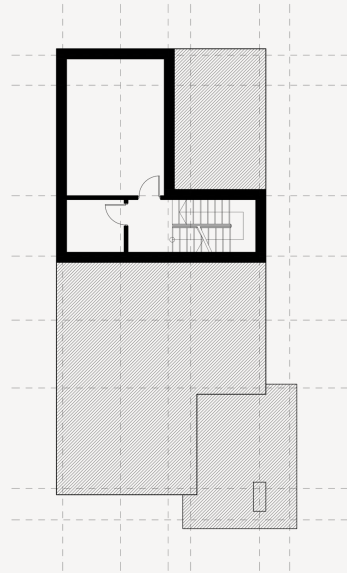
AERIAL VIEW

Situated in a residential district, near Greenfield on the northern outskirts of Bucharest-Drumul Pădurea Pustnicu 97b, in immediate proximity to a mature forest, the residence is embedded within a distinctive natural setting that fundamentally informed the interior design strategy. The close interaction with the wooded landscape has profoundly shaped both the aesthetic direction and the material palette of the project, steering the overall concept toward a seamless and context-sensitive integration with its surrounding environment.



ORIGINAL LAYOUT

Purchased in an early, unfinished stage, with only the basement and ground floor completed, Greenfield H97 required a comprehensive process of completion and customization to accommodate a family with two children. The architectural intervention focused on optimizing spatial proportions and functional relationships, aligning the interior layout with the clients' lifestyle.

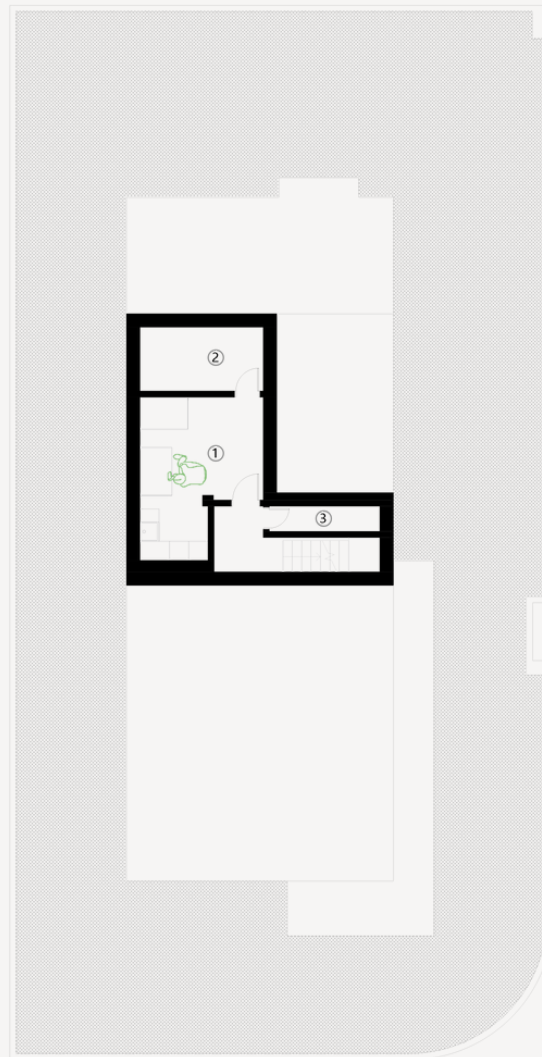


OUTSIDE WORK
COMPLETED



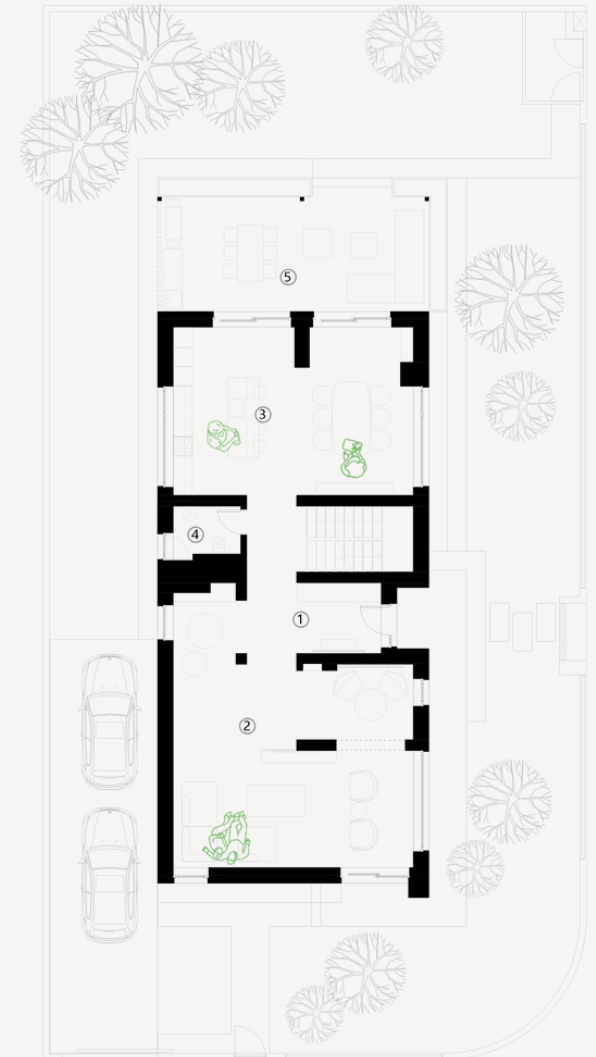
CONCEPT

The interior design of the H97 residence was conceived holistically, ensuring a functional distribution of spaces across three levels. The ground floor was designed with a different spatial configuration in mind, requiring the interior design to adapt accordingly. This level serves as the communal area, fostering social interactions through open, flexible spaces that integrate natural materials such as wood and stone, enhancing warmth and connectivity with natural light.



BASEMENT

- 1 TECHNICAL ROOM/ LAUNDRY ROOM
- 2 STORAGE ROOM
- 3 STORAGE ROOM



GROUND FLOOR

- 1 ENTRANCE HALL
- 2 LIVING ROOM
- 3 KITCHEN AND DINING ROOM
- 4 POWDER ROOM
- 5 TERRACE

CONCEPT

The first floor hosts the private areas, with bedrooms designed for comfort and calm, enhanced by a warm, curated palette. Bathrooms feature refined golden accents, while the ground floor contrasts with modern black finishes. The attic serves as a versatile space, combining a home office, gym, and cinema, fostering creativity within a unified design concept.



FIRST FLOOR

- | | |
|-------------------|------------|
| 1 HALL | 5 BEDROOM |
| 2 DRESSING ROOM | 6 BEDROOM |
| 3 MASTER BEDROOM | 7 BATHROOM |
| 4 MASTER BATHROOM | |

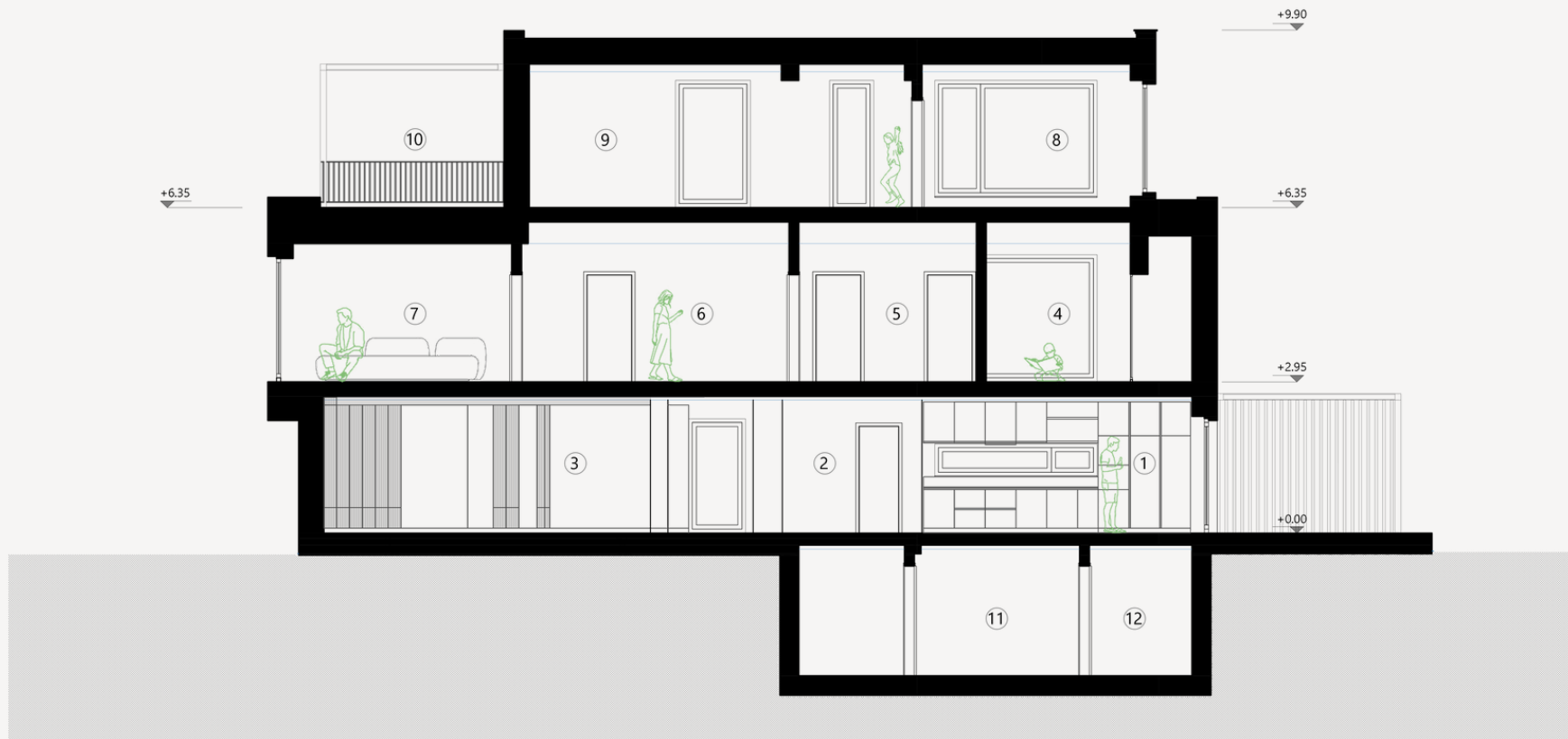


SECOND FLOOR

- | |
|--------------|
| 1 HOBBY ROOM |
| 2 OFFICE |
| 3 BATHROOM |
| 4 TERRACE |

CONCEPT

The design ultimately embodies a harmonious synthesis of visual refinement and practical utility. Through the integration of warm chromatic tones, tactile natural materials, and adaptable spatial configurations, the concept supports a contemporary and welcoming living environment, thoughtfully aligned with the dynamic lifestyle of its occupants.



- 1 KITCHEN AND DINING ROOM
- 2 ENTRANCE HALL
- 3 LIVING ROOM
- 4 BEDROOM

- 5 HALL
- 6 DRESSING ROOM
- 7 MASTER BEDROOM
- 8 OFFICE

- 9 HOBBY ROOM
- 10 TERRACE
- 11 TECHNICAL ROOM - LAUNDRY ROOM
- 12 STORAGE ROOM

INTERIOR DESIGN
LIVING ROOM



INTERIOR DESIGN
LIVING ROOM



INTERIOR DESIGN
LIVING ROOM



INTERIOR DESIGN
ENTRANCE



INTERIOR DESIGN
KITCHEN



INTERIOR DESIGN
KITCHEN





INTERIOR DESIGN
STAIRCASE



INTERIOR DESIGN
POWDER ROOM
GROUND FLOOR



INTERIOR DESIGN
MASTER BEDROOM



INTERIOR DESIGN
MASTER
BATHROOM



INTERIOR DESIGN
KID'S BATHROOM





THANK YOU!
