

RESTAURANT & BISTRO MAGNET



Magnet Restaurant; photo: Janez Marolt



Magnet Bistro; photo: Ana Skobe

Two spaces, one soul - Magnet Restaurant & Bistro

The Magnet culinary story unfolds as a harmonious duet—two distinct voices resonating within the same brand symphony. Conceived by AKSL arhitekti, Magnet Restaurant and Bistro Magnet together form a refined and playful spatial narrative, one that speaks to the richness of contrast and the elegance of cohesion.

Set within the same urban fabric on the outskirts of Ljubljana, these two spaces—while independent in function and character—are deeply interconnected. The Magnet Restaurant, originally designed in 2010 and reimagined in 2022, offers an immersive experience rooted in sophistication and mystery. Dark tones, custom lighting, and sculptural detailing craft an atmosphere of quiet intimacy and understated luxury. It is a place of calm, where every design element—from the crystal chandelier above the bar to the secretive VIP room—invites contemplation and delight.

In playful counterpoint, Bistro Magnet emerges as its vibrant younger sibling. Introduced in 2024 as an extension of the Magnet identity, the bistro exudes a fresh and energetic spirit. Here, color, texture, and whimsical detail converge to stimulate the senses—from the fluted black bar façade and lush green tilework to the immersive forest-like VIP hideaway. The bistro challenges the ordinary with unexpected forms, layered visual moments, and a design that encourages curiosity.

Together, these two projects showcase a thoughtful dialogue between contrast and continuity. They demonstrate how architecture can not only support but elevate the experience of gastronomy—by crafting atmospheres that reflect both the rhythm of daily life and the specialness of escape.

This application presents Magnet Restaurant and Bistro Magnet not as separate ventures, but as complementary expressions of one architectural ethos: spaces that serve the senses, celebrate design, and unlock culinary creativity.



photo: Janez Marolt

THE RESTAURANT

The existing restaurant “Element”, designed by the AKSL architects in 2010, has closed its doors. In 2022 AKSL Architects designed and carried out the renovation of the new restaurant; today named Magnet.

The entire image of the interior is strung around a cylindrical core, which represents a static element of the office building in which the restaurant is located. Through the entrance, which serves as a windbreak and acts as a kind of lantern with its glass walls and mirrors, we enter the elegant restaurant which floor is dark HD surface and walls and ceiling are all painted in dark moss colour. The feeling of being embraced in a cosy atmosphere is even stronger with ambience lighting, creating a lot of microambients throughout the whole restaurant.

On its left side opposite the core is a long stone cladded counter with custom-made lights mounted on it. On the retro counter an illuminated stairs, with a large selection of spirits, is situated, right under the framed, mirrored shelving above, where a reflection of the hanging curtain made of metal hinges in gold and earth tones can be seen. An illuminated crystal crown descends from above the counter, emphasizing its importance. On the left side of the bar, there is a wine cabinet, high and low tables area, where one can wait while the table is ready over a glass of wine. The area can also be used as a winetasting event.

The booths are strung around the core, which with their lighter greenish interior color create a nice contrast with the entire shell in a darker, forest moss color. The booths are like hollowed-out spaces inserted into the core, with wall lights to provide a micro-ambiance.





photo: Janez Marolt



photo: Janez Marolt



photo: Janez Marolt

All tables in the restaurant have stone tops, all chairs in the restaurant area are upholstered. A combination that ensures timeless elegance and comfort when dining and socializing. Lights, carefully selected, in accordance with the design of the space, hang down over most of the tables, creating a feeling of more private area. The long wall of the restaurant above the upholstered bench is highlighted by 5 custom-made relief compositions designed by architect.

The back area of the restaurant is raised with two stairs, creating an area for 3 round tables, a bigger company of people or a concert to be placed there, offering to make more privacy with help of a curtains.

Passing behind the core, we notice the entrance, hidden from the eyes at first, to the VIP room inside the core. It is mystical, secretive place with recessed Karman lamp over the central placed oval table; a magicians hat from which a rabbit is jumping. The curtain surrounding the room opens at the end to reveal a wall full of clouds and a mirror in front of it.

The completely black interior of the bathrooms plays with light reflections from the high-gloss black ceramics and mirrors.

The restaurant interior wants to offer the users a comforting shelter from an everyday stressful life, calming them down with dark earthy colourscheme, creating a proper background for enjoying a good food and offering a bit of a mystical twist with interior of VIP and restroom area.



photo: Janez Marolt



photo: Janez Marolt





photo: Janez Marolt



photo: Ana Skobe

THE BISTRO

Bistro Magnet unveils a playful fusion of colours, patterns and design in Ljubljana and introduces a fresh and vibrant culinary experience in Črnuče, on the outskirts of Ljubljana. Positioned next to elegant Magnet restaurant, bistro Magnet is a younger, more playful, combining relaxed but elegant atmosphere and modern design.

When entering Bistro Magnet, you are greeted by dark but fresh bistro interior with bright marble table tops and comfortable upholstered chairs put on an unusually shaped carpet. An information about a bistro that doesn't want to be just another place with chairs and tables, but rather one, where your eye can get busy with details. In the back of the space there is a bar, with back wall of round black shelves and mirror. Above a soft shaped linear element of a bar, with fluted bar façade in black surface and black composite bar counter, eye-catching Verner Panton design Flowerpot lamps in green add a playful touch to the space. In front of the bar, there are 5 elegant black velvet barstools.

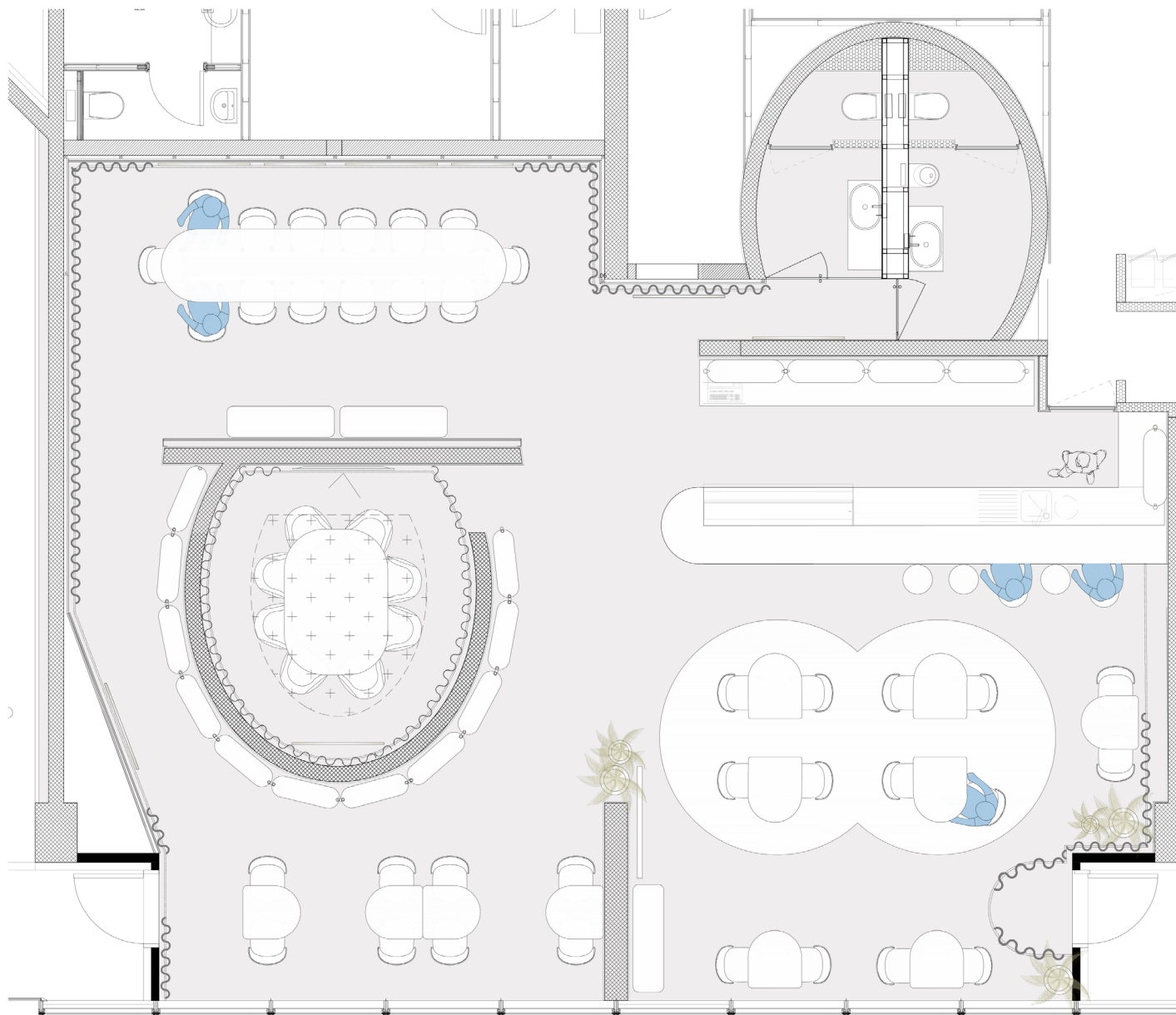




photo: Ana Skobe



photo: Ana Skobe



photo: Ana Skobe



photo: Ana Skobe

The main color palette of the bistro is centered around green and black and creates visually captivating environment. Black ceiling, furniture and dark gray floor make a strong base for white table tops. Gentle creamy curtains and green details such as lights and shiny green wall cladded in ceramic tiles together with greenery make the bistro fresh and inviting. At the heart of the bistro there is an oval shaped room. One can enter it moving away the velvet mint curtain. The room has a big marble plated table with comfortable armchairs around it and a big round mirror which makes the room a bit misterious. There is greenery hanging down from the ceiling and in-between a branch looking light feature. You could say that it feels a bit like a hiding space somewhere in middle of a forest. The VIP room is equipped with a TV and a curtain for privacy, and works as an exclusive setting for private meetings or lunch accommodating up to eight guests.



photo: Ana Skobe

Outside wall of the oval room has an ombre wallpaper and greenery under the ceiling. Under it there are shelves providing place for decoration and magazines, travel and cook books, some pots and vases and a Japanese lucky cat figures that bring good vibes into the space. Behind the oval room is a semi-private part of the restaurant, placed in front of the wall with shining tiles, surrounded by soft creamy colored curtain. Opposite to it, is an image of greenery behind fluted glass, that gives an impression of winter garden image. A long communal table with higher seating for twelve people has a bright white stone table top and above it voluted lights are recessed from the ceiling. All bistro tables are crafted from captivating marble stone in various hues, adding an element of sophistication to each dining experience. For a better functionality, some are designed like rounded halves, so they can function as a table for 2 or a table for 4 with rounded edges. Strategically placed curtains not only soften the ambiance but also contribute to better acoustics, ensuring a comfortable dining setting. Bistro Magnet promises a visual and sensory journey, inviting visitors to indulge in delectable flavours within a dynamic and thoughtfully designed space.



photo: Ana Skobe