



C L O U D C R E S T

RESIDENCE



CLOUDCREST RESIDENCE

Residential Building at Moniatis village, Cyprus

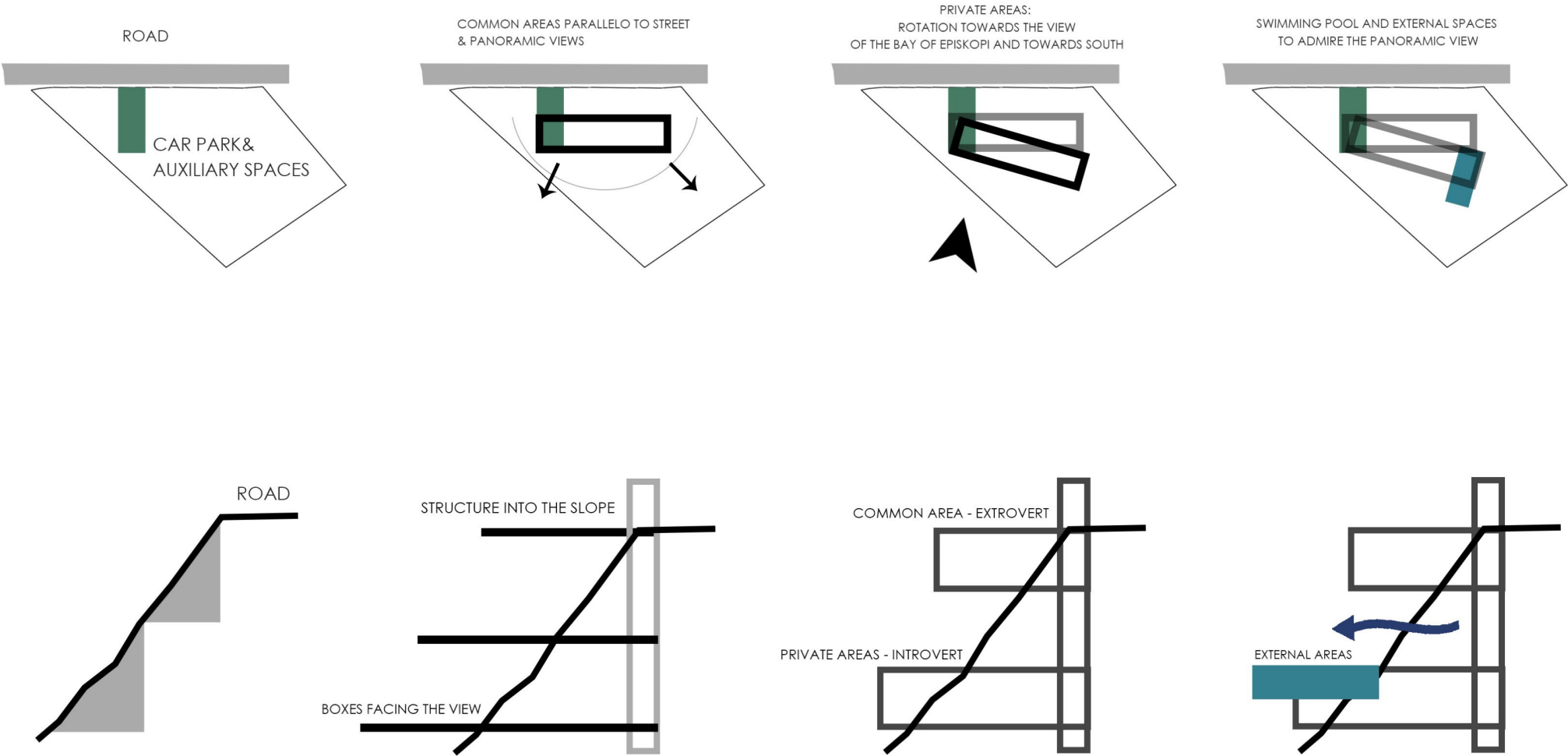
Perched delicately upon the slope, this residence is an intricate dialogue between solitude and togetherness, introversion and extroversion. It is not simply a house, but a spatial experience—one that transforms seamlessly between a unified home and a collection of independent lodgings, where the interplay of levels orchestrates moments of connection and retreat.

The design unfolds in layers, carving a vertical narrative into the landscape. Above, the communal spaces command a panoramic gaze, stretched parallel to the street, as if reaching out to embrace the horizon. Here, light spills unhindered, and the architecture breathes expansively—an extroverted heart that invites gathering, laughter, and the boundless sky. Walls dissolve into glass, blurring the threshold between shelter and scenery, allowing the 180-degree view to saturate every moment with openness.

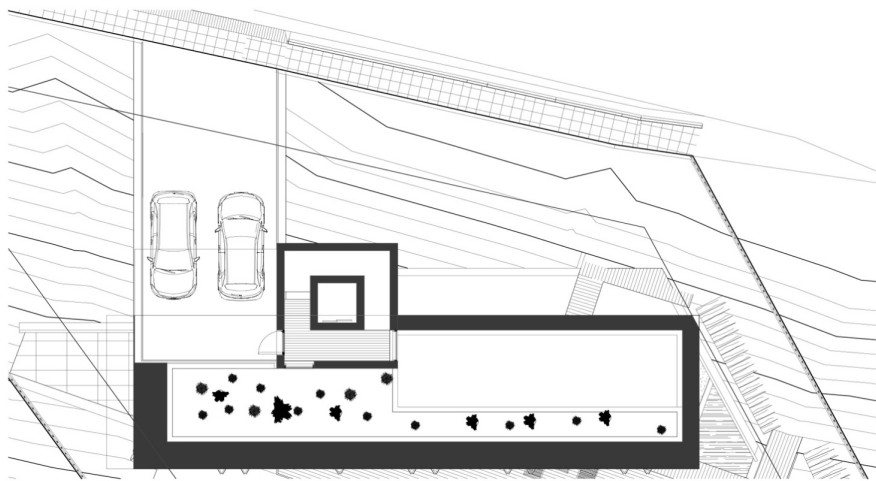
Below, the private quarters nestle into the trees, quietly absorbing the serenity of nature. The lower volume shifts, pivoting towards a singular focal point—the Bay of Episkopi. This is a realm of introspection, where architecture composes frames of solitude, guiding the gaze not outward, but inward. Light is filtered, shadows softened, and each space becomes a cocoon, wrapped in the stillness of the landscape.

Together, these two realms create a home that is both a sanctuary and a gathering place. A choreography of perspectives, where one may stand above, embraced by the expanse of the world, or below, cradled in the embrace of the earth. A dwelling that does not impose but instead listens—to the land, the light, and the life within.

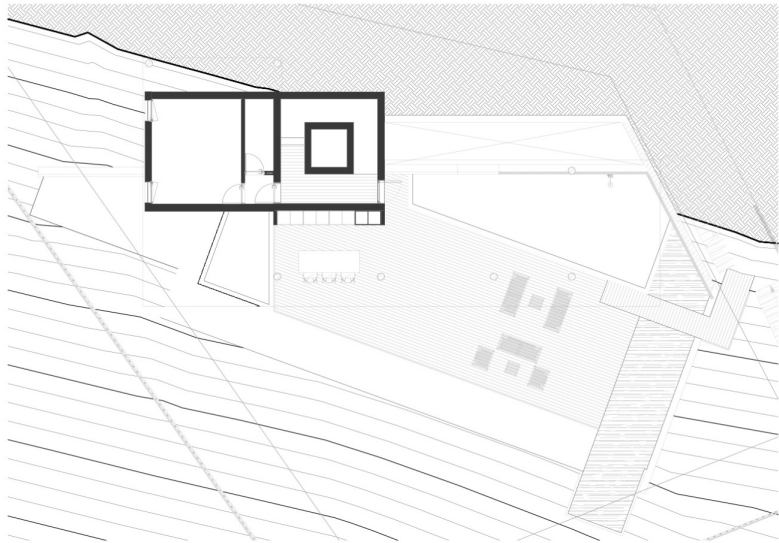
Site and concept analysis



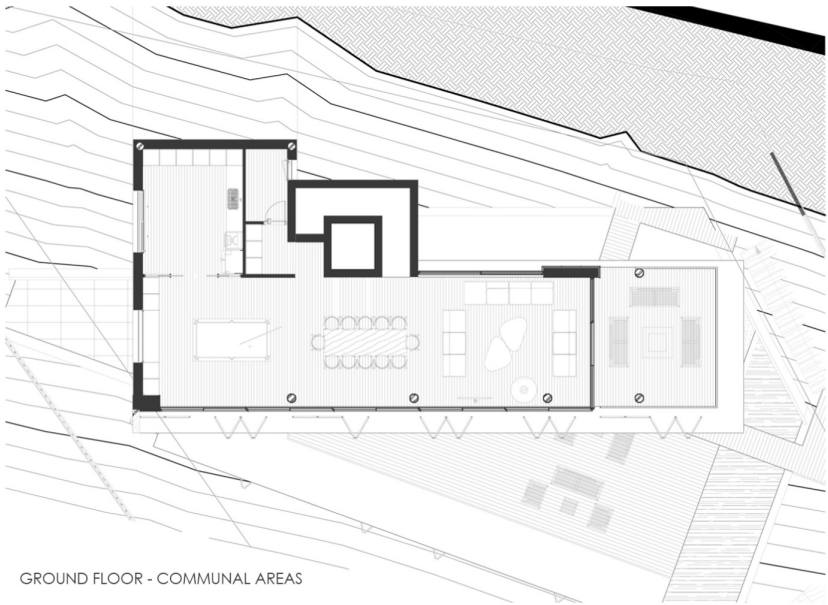
Floor plans



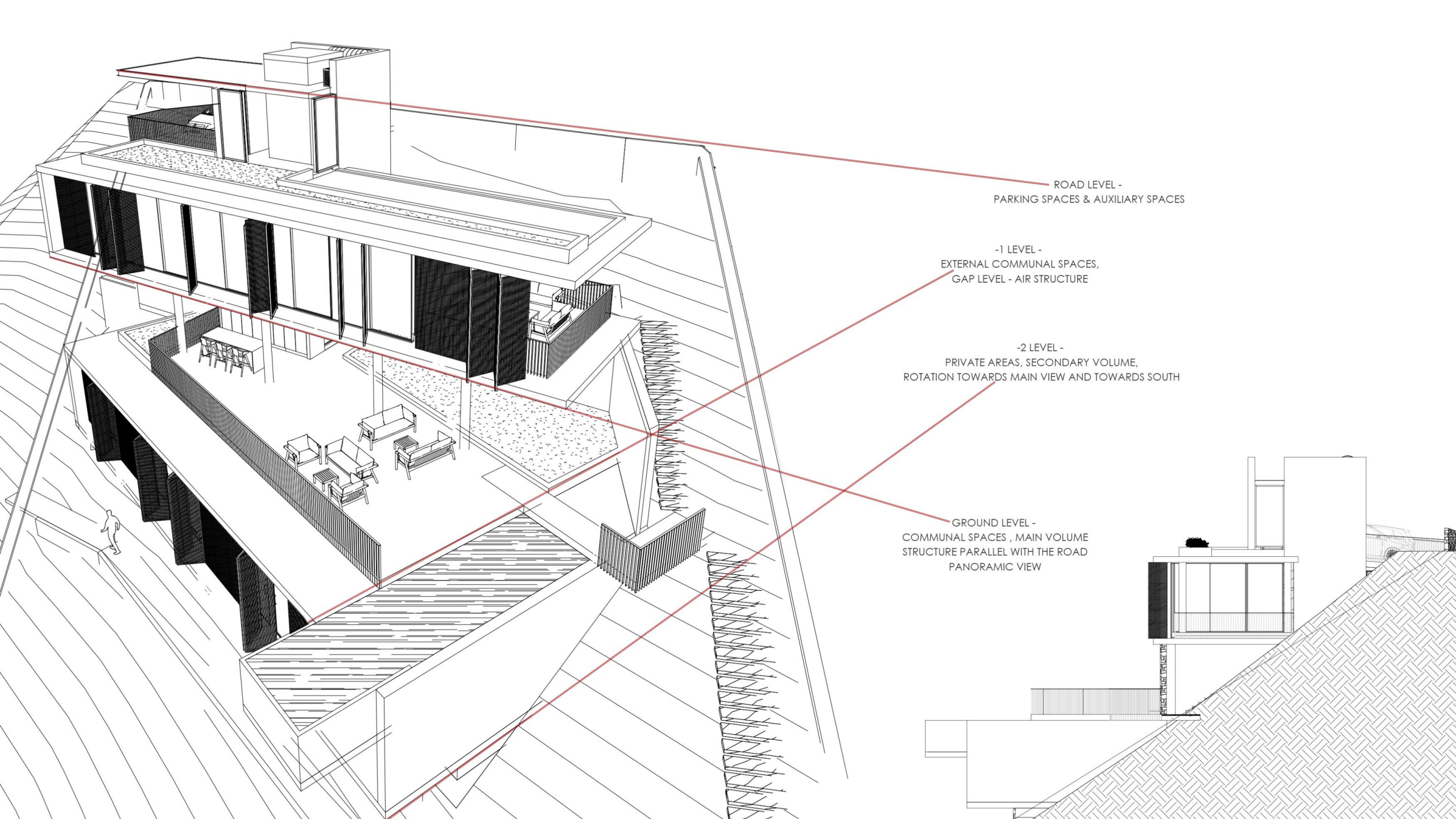
+1 FLOOR - PARKING AREA & AUXILIARY SPACES



-1 FLOOR - EXTERNAL COMMUNAL AREAS



GROUND FLOOR - COMMUNAL AREAS



ROAD LEVEL -
PARKING SPACES & AUXILIARY SPACES

-1 LEVEL -
EXTERNAL COMMUNAL SPACES,
GAP LEVEL - AIR STRUCTURE

-2 LEVEL -
PRIVATE AREAS, SECONDARY VOLUME,
ROTATION TOWARDS MAIN VIEW AND TOWARDS SOUTH

GROUND LEVEL -
COMMUNAL SPACES , MAIN VOLUME
STRUCTURE PARALLEL WITH THE ROAD
PANORAMIC VIEW

The intention to use local materials and materials that are related to the landscape make the design sit stronger into its context: **wooden louvres, stone walls, concrete fair face**





The private volume at the bottom of the structure should create the feeling of a home and a private area for the users : **wooden louvres, wooden details inside, big glazing openings for the view**





Pathways around the house in different levels will give to users the chance to explore and experience the surrounding areas and nature.



The correct orientation towards South will give to the residence a good amount of daylight and sunlight during all seasons as well as cross ventilation to almost all the spaces.





Cloudcrest residence should not conquer nature but converse with it—framing the trees as columns, the wind as music, and the earth as its foundation. It must breathe with the seasons, stand humbly among the pines, and offer shelter without separation from the wild beauty beyond its walls.