



CASAVARDE



The terminology of the word 'Casa' or 'House' defines a residential built space that has a significant role in linking one's thoughts of space with its physical materiality. The word Verde or Green represents not only the nature and the greenery but also the life, the new growth and new beginnings.

The whole concept of Casa Verde stemmed from a desire to combine greenery(forest), topography(site) and a very personal perception of home(clients).

It is situated in an elongated plot with a small hill and a small forest at the back, while being at the same time in the middle of a busy neighbourhood. The clients, a family of 6 people and 4 animals, wanted a private home that would fit into the existing natural landscape and take its most defining elements.

The topography determines the entrance of the house around the corner and on a higher level from the main road. From the back side, the ground floor areas become an organic extension of the natural environment and achieve a connection to the exterior, while from the façade of the plot the ground floor appears elevated and through its elevation it becomes disconnected from the busy street and achieves introversion and privacy. The ground floor captures the wide view of the forest and the sun, designed as an open plan space enclosed by large glass panels.

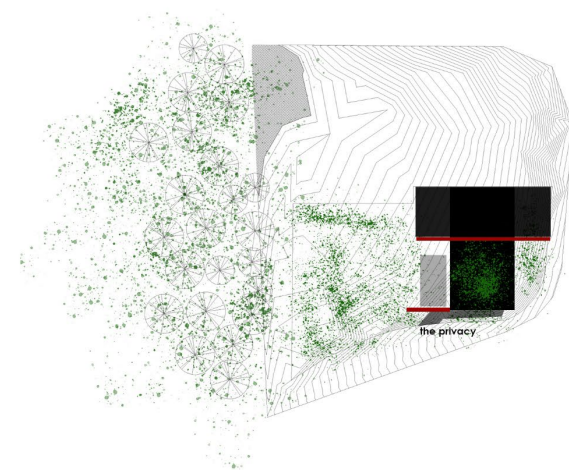
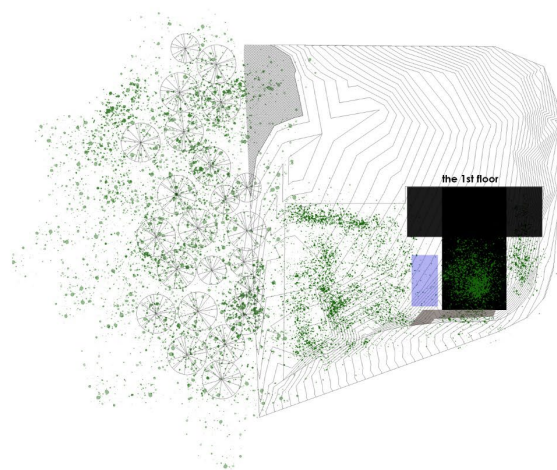
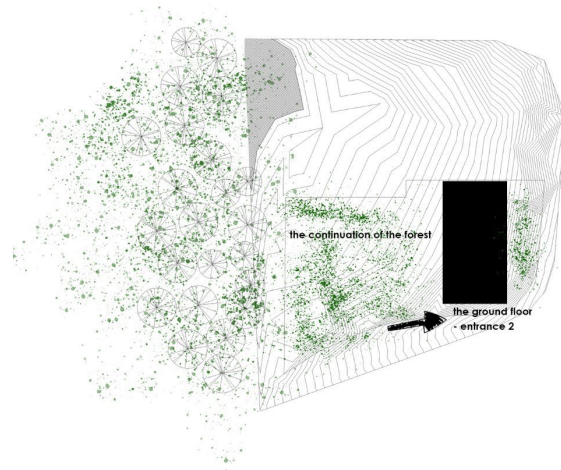
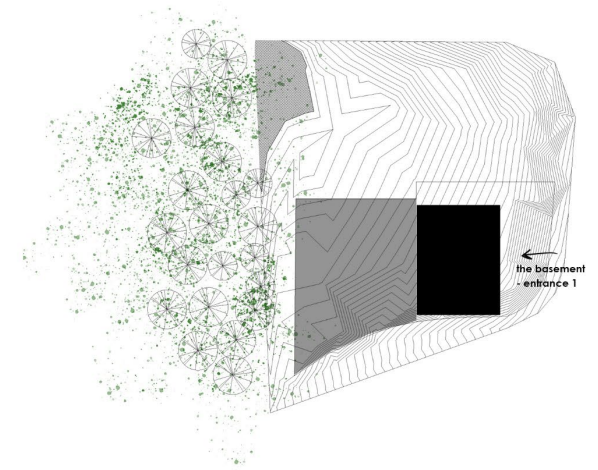
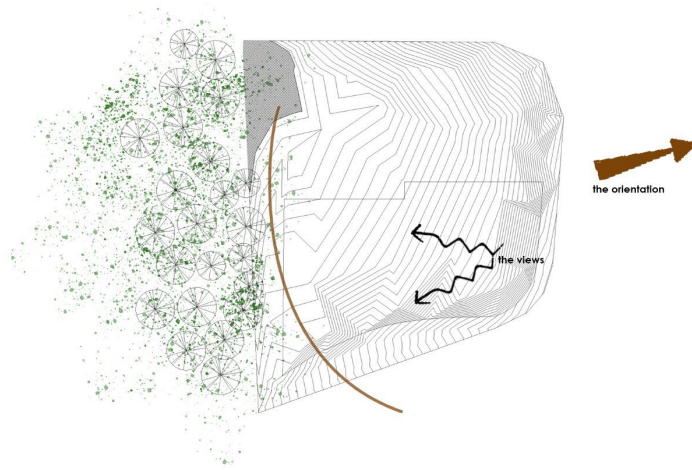
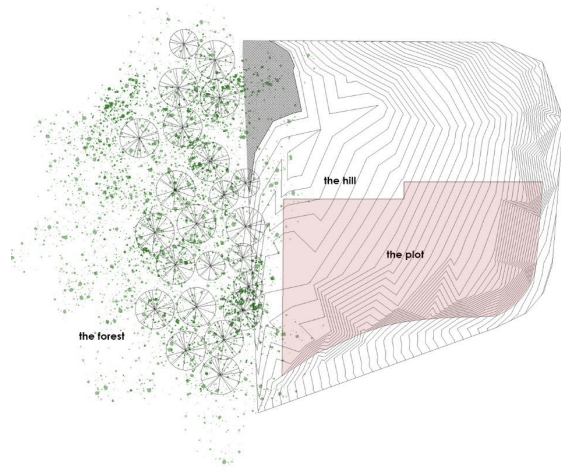
The bedrooms were located above the shared areas and oriented towards the secondary road to give them privacy; a second facade layer was created with a corridor and external movable wooden louvres. A green roof was also designed, not only to give a green view but also to retain the sustainability and the green layer of the design that relates to the forest.

The other half of the plot was meant to have a continuous landscape with the forest. The materials that were used were wood, aluminium and earthy ceramic textures as they all remind the colours and textures of the earthy components around the site.

CasaVerde has a strong capability of transforming the area into a totally personal and private space. Each person of this family holds its own space that can be personalised according to his own comforts. The family can stay private in their own shelter and transform the space any time they want to.

CASAVERDE

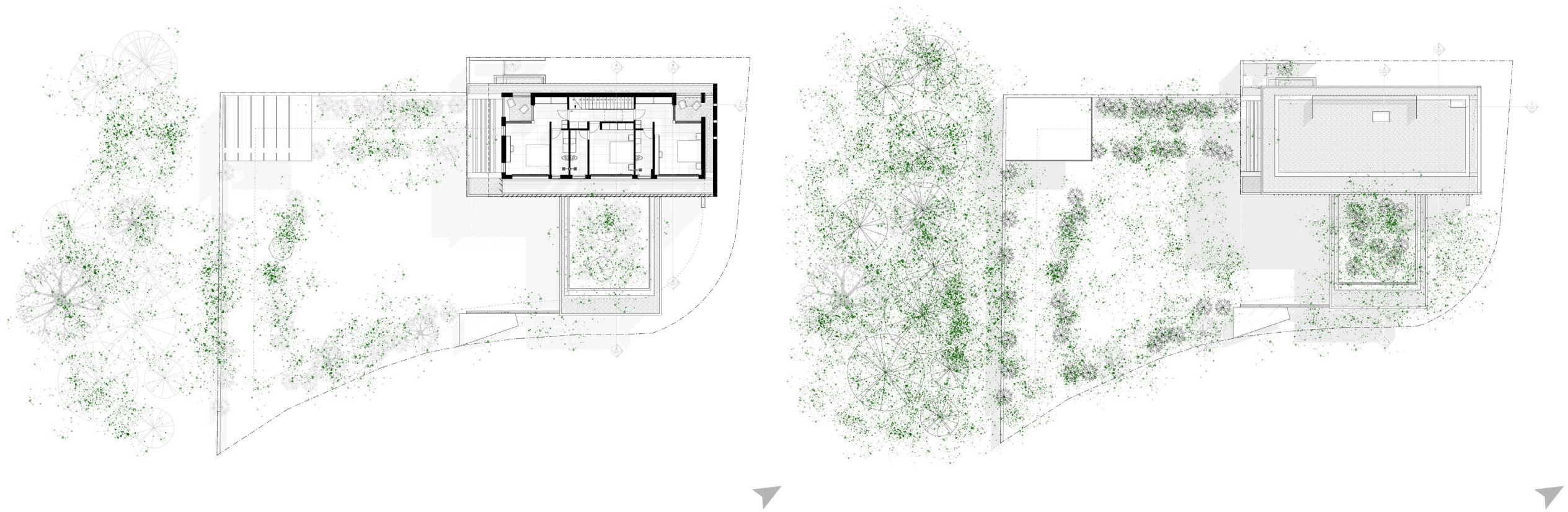
Residence



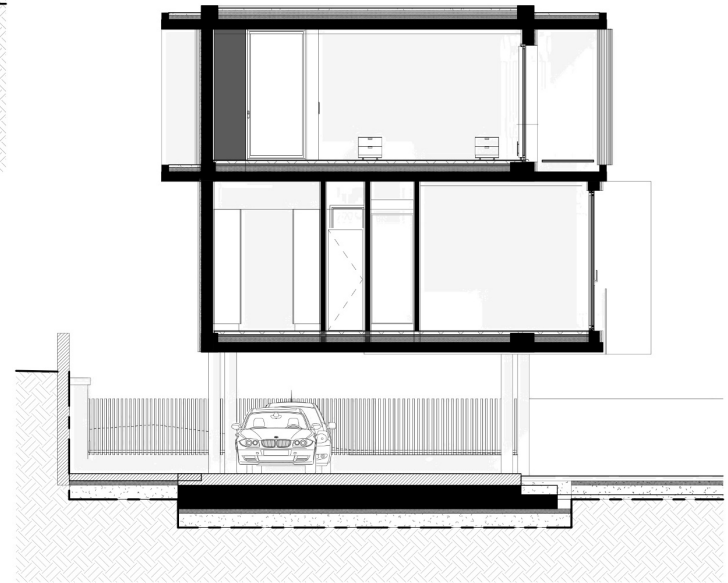
Topography & Concept



Basement & Ground floor plans



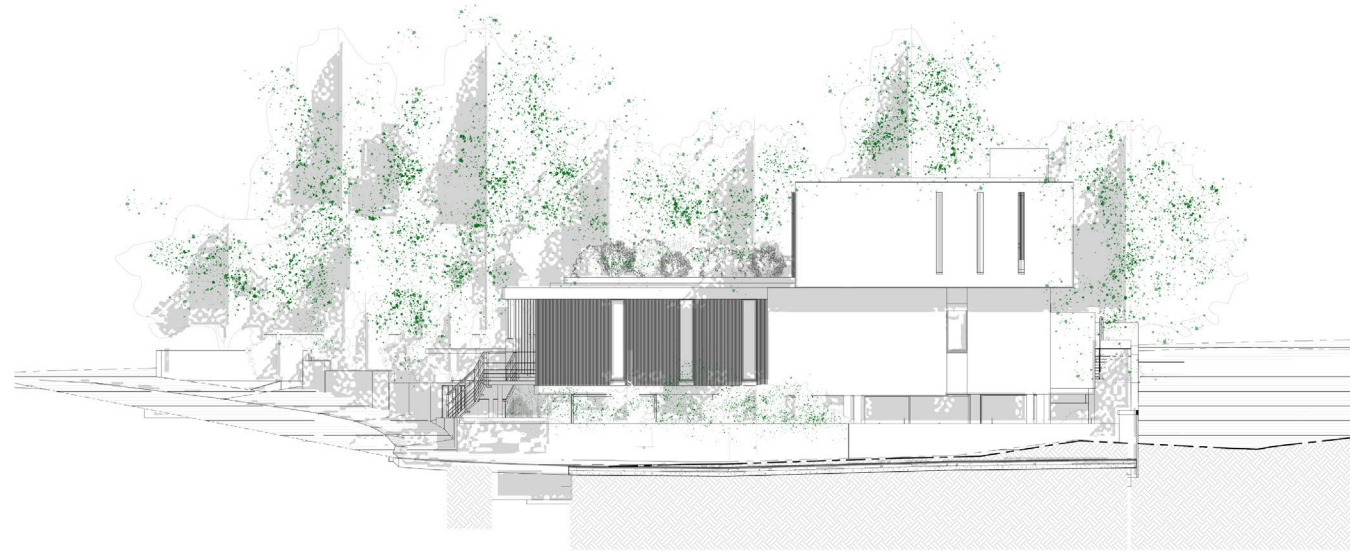
First floor & Roof floor plans



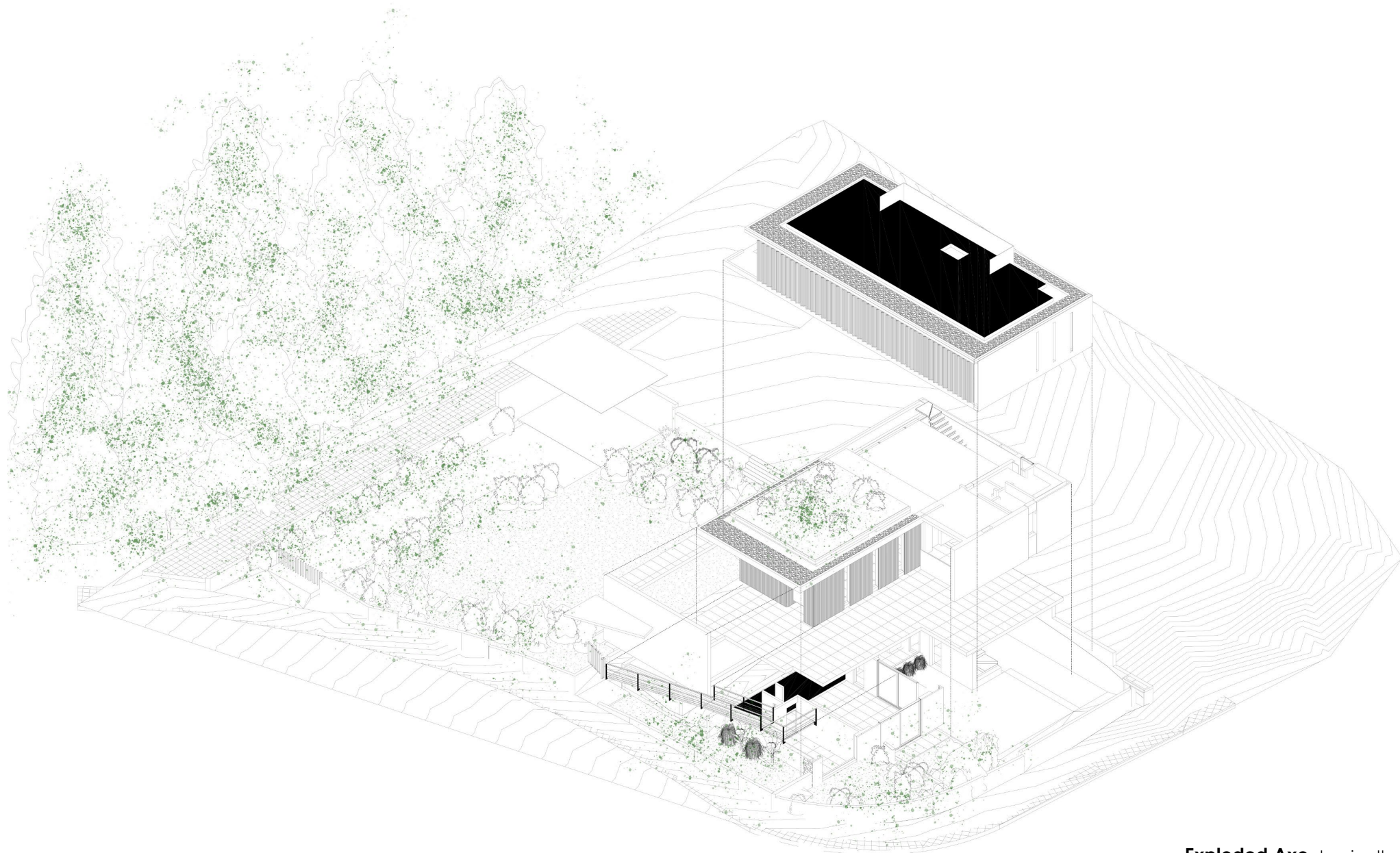
General Sections



Sectional Perspective showing the interaction between the forest and the transparent spaces of the house.



General Elevations showing the consolidation of the forest with the house.



Exploded Axo showing the intention and the overall concept to include green parts into the design.



