

RESIDENTIAL PARK LOZEN



Residential Park Lozen stands as one of Bulgaria's most ambitious and expansive residential initiatives and has transformed into one of the most desirable living locations. The project's core concept is to foster independence within each housing unit while cultivating a sense of community and promoting peaceful coexistence among residents.

Located near Lozen village and within easy reach of the city, the complex offers a closed-type community. It meets the needs of modern urban residents by providing a harmonious and fulfilling lifestyle while maintaining convenient access to city amenities.

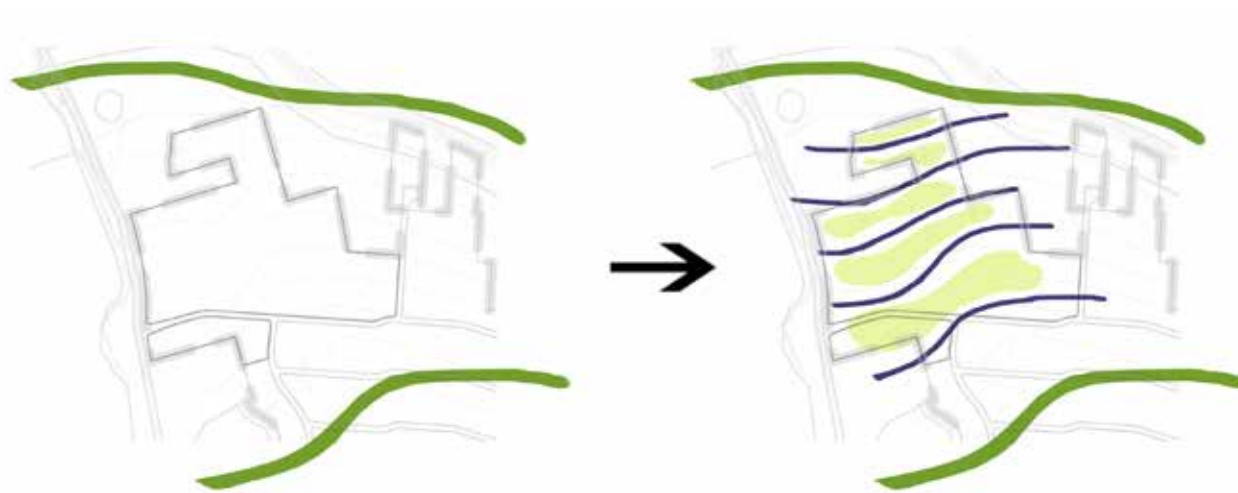
The complex embodies the urban dweller's aspiration for a home that combines serenity, comfort, and a high quality of life, all within close proximity to nature while maintaining swift access to the city. The core concept underpinning this project revolves around providing independence within individual housing units while fostering a sense of community among residents within a well-organized and well-maintained environment. The complex has been planned to offer residents a diverse range of housing options. The development includes three main types of residential structures, each featuring distinctive layouts and square footages, aimed at meeting the diverse requirements and expectations of future residents.

The homes in the complex are characterized by their individual color schemes, carefully selected to harmonize with the natural landscape. These colors, inspired by nature's tones, blend with the environment without disrupting the overall visual balance. Beyond their aesthetic appeal, the color choices also serve a functional purpose by assisting residents in orienting themselves within the complex.

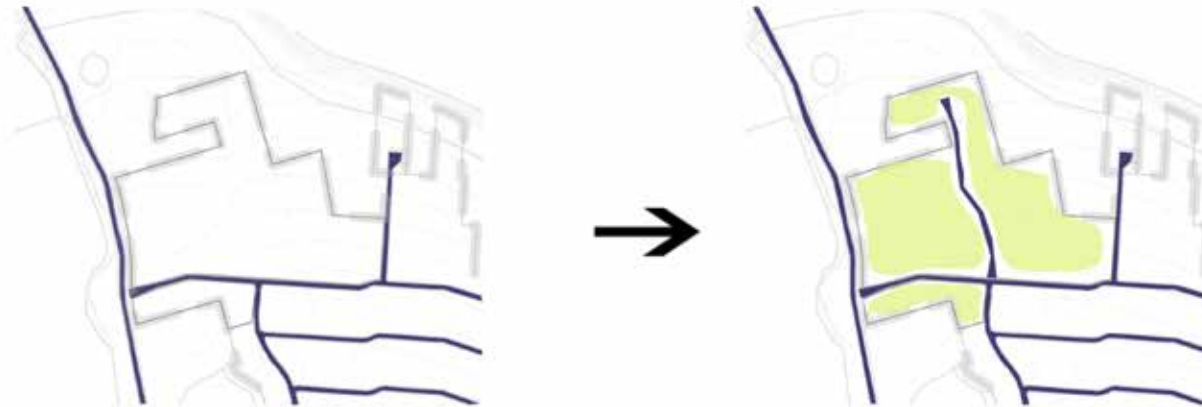
Quality and high energy efficiency guide the selection of building materials, technologies, and system solutions for the houses. Residential Park Lozen's design is centered around its lush natural environment. It integrates urban planning with the surrounding landscape to create a harmonious living space. The residences occupy only about 20% of the land area. The open spaces are crafted to offer residents both private courtyards for intimate gatherings and expansive communal areas for fostering community spirit. The common spaces are designed to resemble a landscaped park environment, featuring areas for sports, recreation, and children's games. Internal streets are also incorporated to ensure smooth movement for cars, pedestrians, and bicycles.

The project balances privacy, warmth, and shared spaces. It includes three residential types with varied layouts and sizes. Phase 1 began in 2019 and was completed in 2022, delivering 135 units - row, single-family, and two-family houses. In addition, 21 more row houses and 6 two-family homes were built. Phase 2, completed in 2024, expanded the complex with 41 row and 18 two-family houses. Due to strong demand and continued interest, 21 more houses and 4 multi-family buildings are planned, with construction starting in late 2025. Beyond residential units, Residential Park Lozen will offer commercial and public zones, including a school and kindergarten, further enhancing the quality of life for residents and integrating essential services within the community.

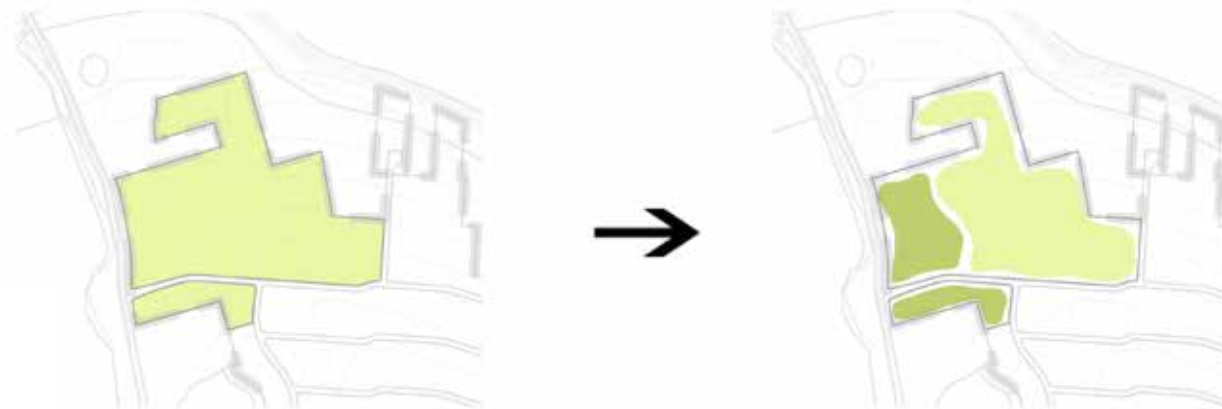
RESIDENTIAL PARK LOZEN



Giving the optional direction of the development scheme using the natural conditions of the site area.



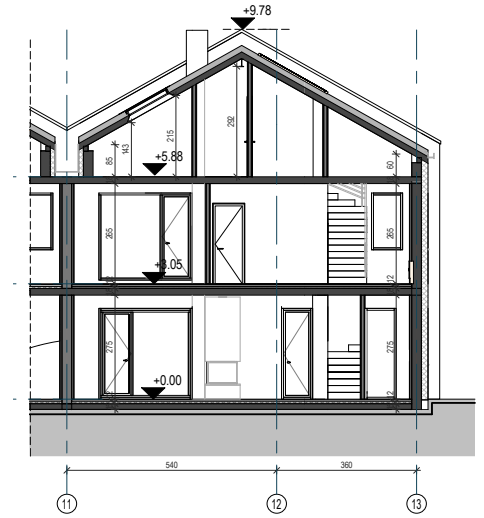
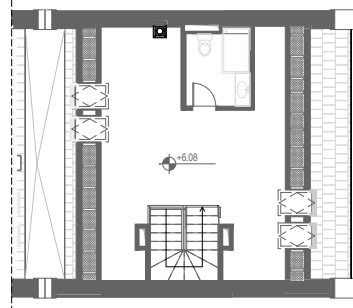
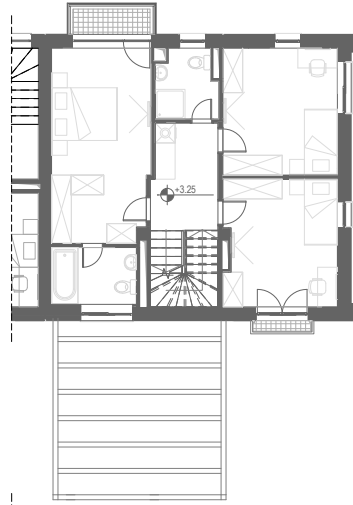
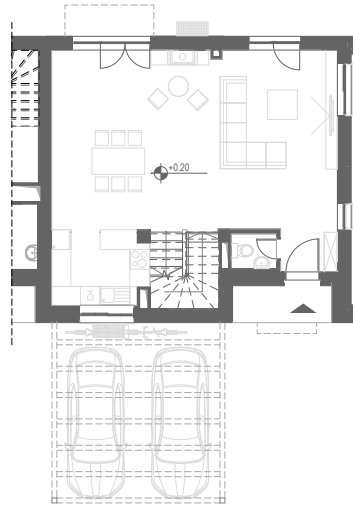
Creating a development in a pedestrian zone by providing a strict defined hierarchy of roads.



Harmonizing the public and private zones by creating a transition between the functional distribution.

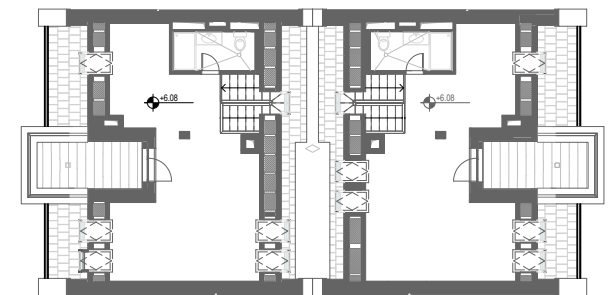
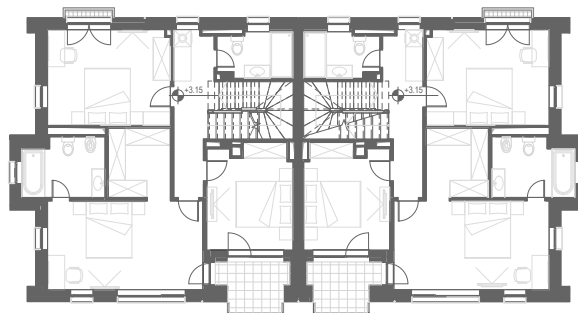
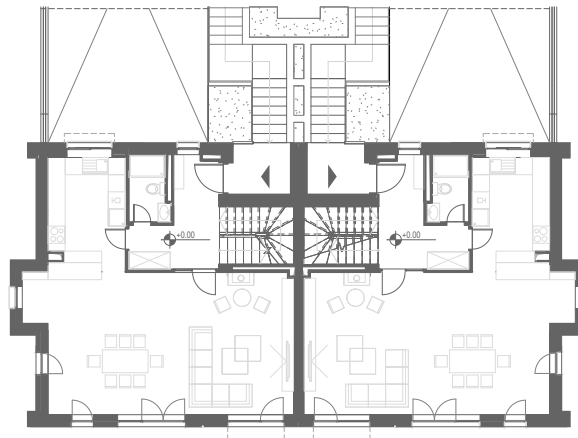
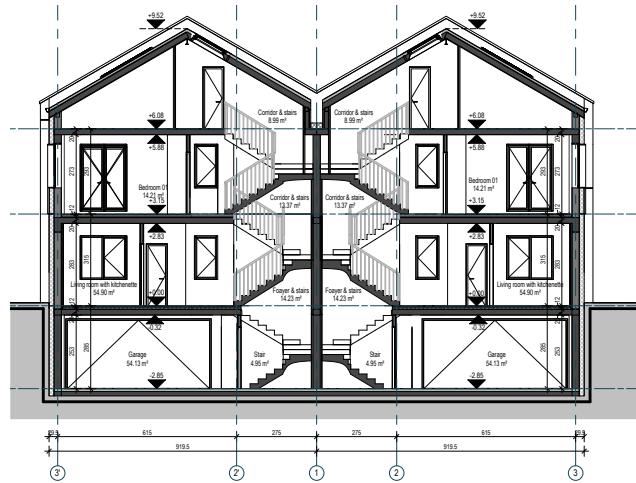
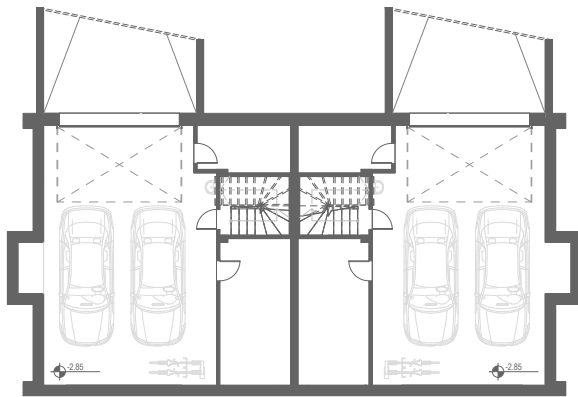
SITE ANALYSIS



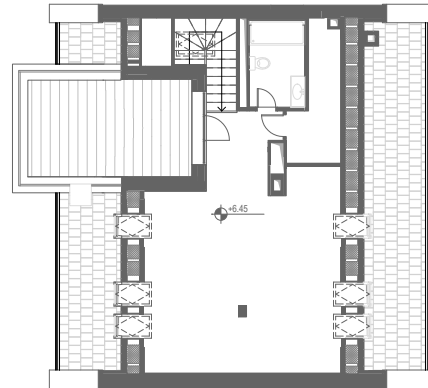
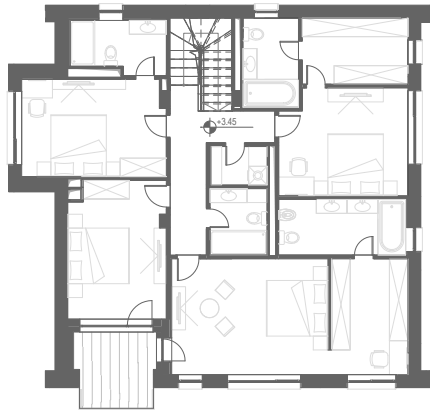
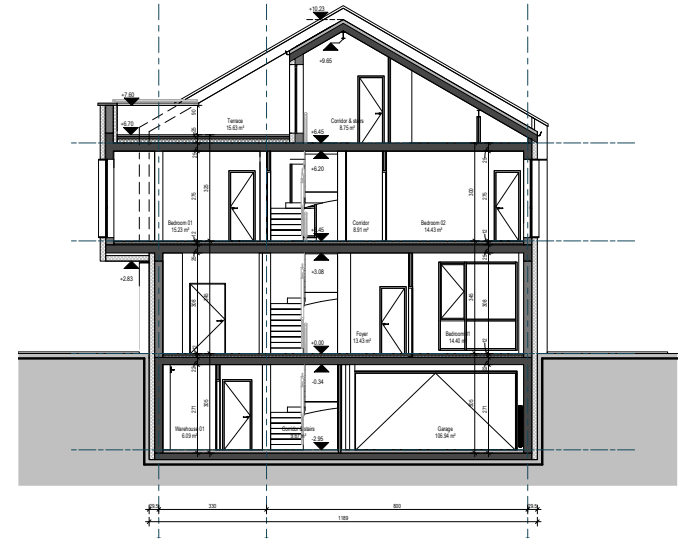
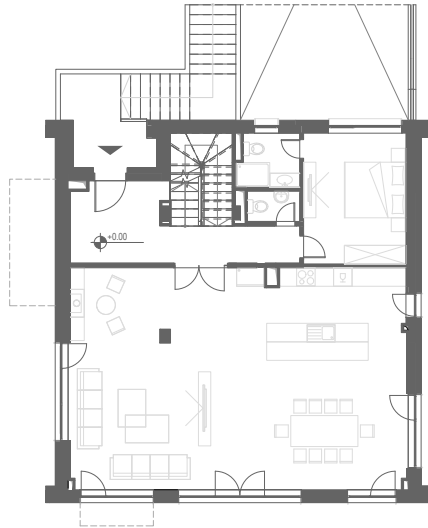
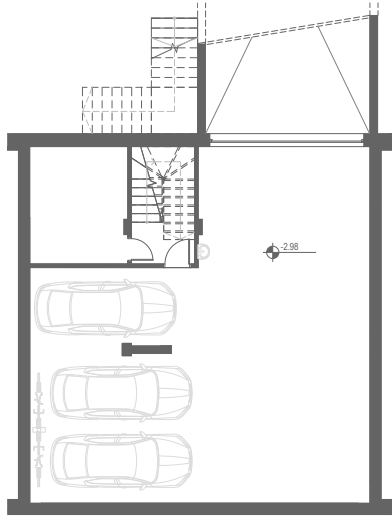


ROW HOUSE

FLOOR PLANS & SECTION



TWIN HOUSE FLOOR PLANS & SECTION



SINGLE FAMILY HOUSE

FLOOR PLANS & SECTION



RESIDENTIAL PARK LOZEN



RESIDENTIAL PARK LOZEN



RESIDENTIAL PARK LOZEN



RESIDENTIAL PARK LOZEN



RESIDENTIAL PARK LOZEN



RESIDENTIAL PARK LOZEN



RESIDENTIAL PARK LOZEN



RESIDENTIAL PARK LOZEN



RESIDENTIAL PARK LOZEN



RESIDENTIAL PARK LOZEN



RESIDENTIAL PARK LOZEN



RESIDENTIAL PARK LOZEN



RESIDENTIAL PARK LOZEN