

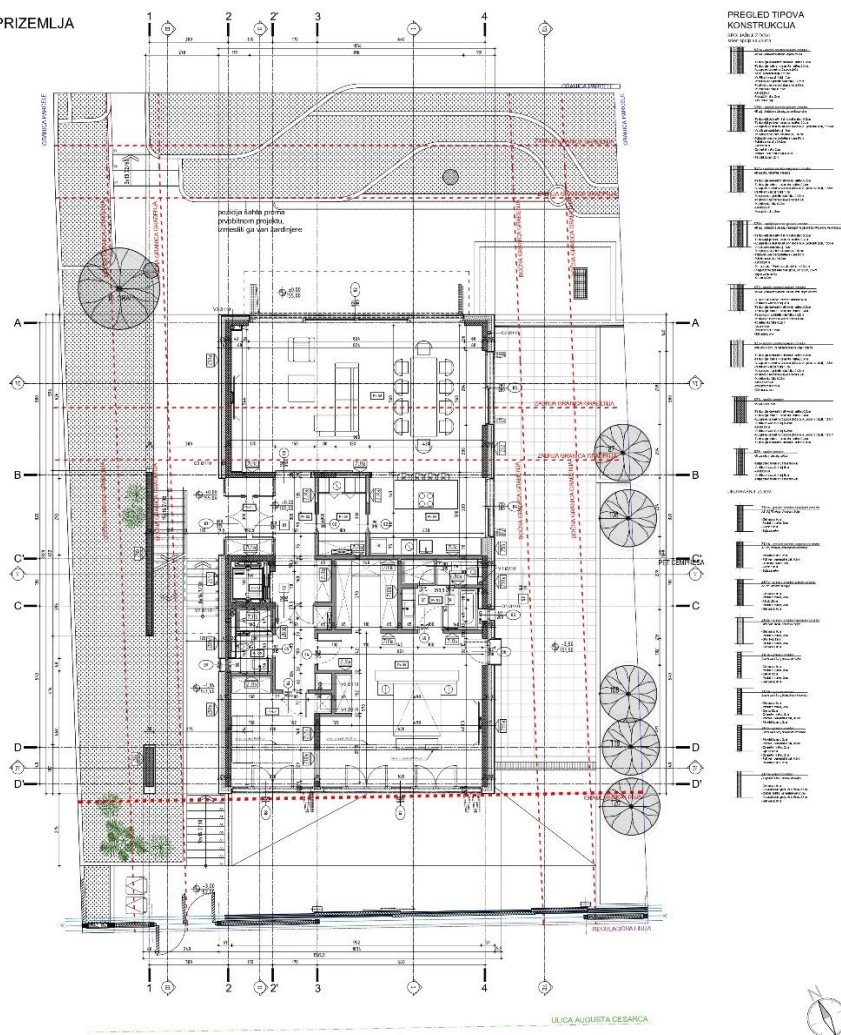
The family residential building is located in the densely built matrix of the family residential street Cara Irakli in Belgrade.

The building was built for two families with different apartment structures. Clear communication, penetration through the frame of the building from the street side, opens the view to the villa, which is in the common complex. The position of the house and the restrictions opened the opportunity to continue the row of cubes, the structure of neighboring houses in the shore, if the building fills the void with its construction rather than necessarily changes the micro-urban balance.

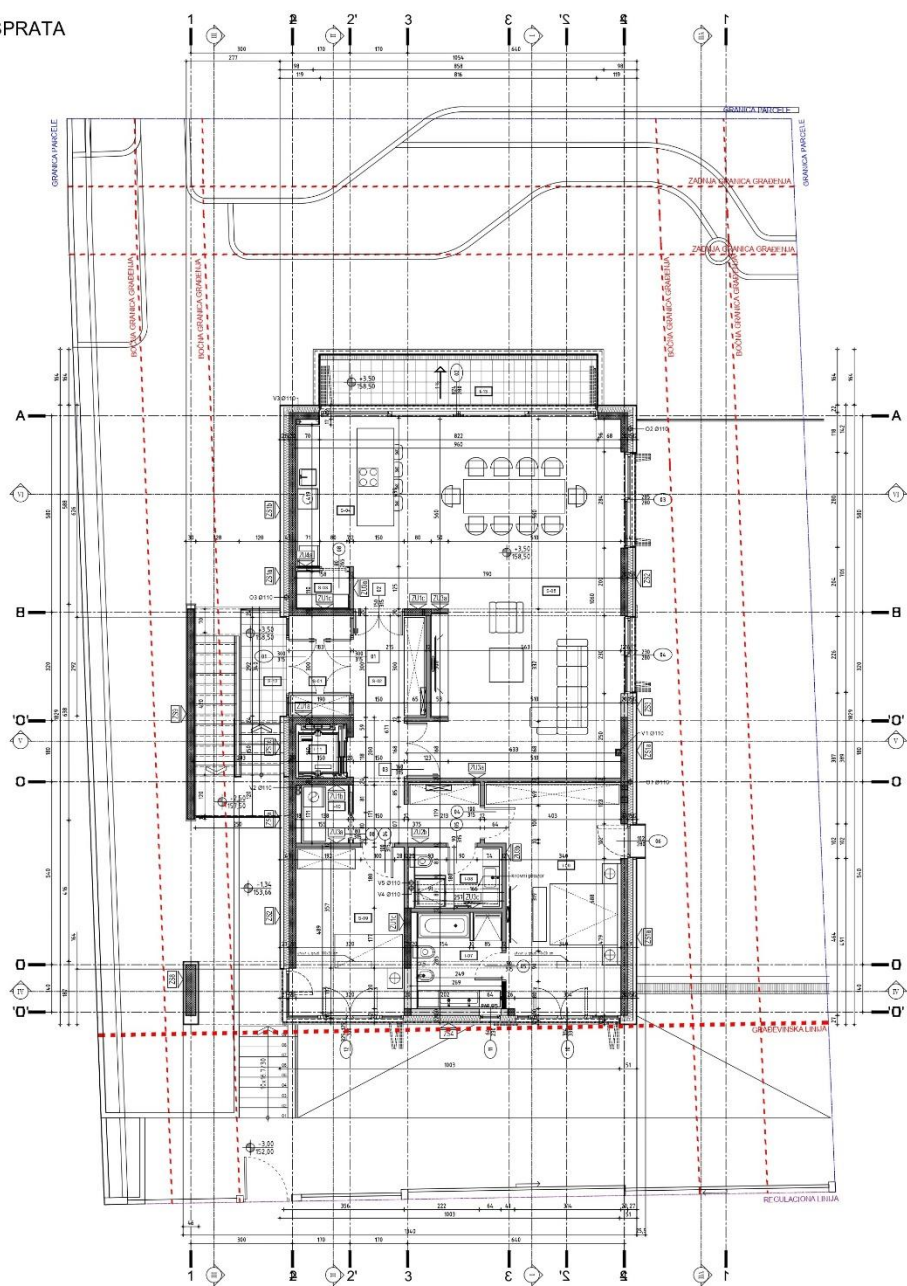
This balanced cubic object with its form brings a clear understanding of function. The solid cube is carved with chalons on the south side, which, apart from their basic role of shading and protection from the sun, give softness and airiness to their changes in the positioning of the elements. Such an element enables the change of a seemingly rigid form, which gives a dynamic effect not only to the building, but also to the street itself...

The building is built on concrete slabs, which gives it the shape of a "soyhouse", and in a functional sense, there is a space for parking.

OSNOVA PRIZEMLJA  
R 1:50



OSNOVA SPRATA  
R 1 : 50



## PREGLED TIPOVA KONSTRUKCIJA

KUNSTRUM  
SPOLADLA 70000

SPICE JAGUŁE ZŁOVI  
amer. wojska ka unutra

- [illegible]

### INTRODUCTION

- [illegible]









