

“More than walls — a framework for belonging.”

Fshati I gjelber ..

Fshati I gjelber

••

The neighborhood is complemented and further connected through a shared service building, which provides essential services to residents. It includes various markets, the necessary pharmacies, hairdressers for refreshing the look, as well as cafes and restaurants where people can enjoy a moment of relaxation.

There is also a day care center for children, which provides a safe and stimulating environment for the little ones, making life easier for parents. This helps create a comfortable and functional environment where all residents can find their daily needs. Offering essential amenities and services, this neighborhood promotes a sustainable and contemporary lifestyle.

The greenery has been treated with care, using colors that express particular identities and contribute to enlivening the environment. The vegetation is varied and well maintained, offering green spaces to relax and spend time with family and friends. In this way, everything can be handled in the best way to offer the residents a quality and enjoyable life.

This neighborhood, with its unique character and sense of coexistence makes them feel part of a dynamic community, where each individual contributes to the improvement of common life.

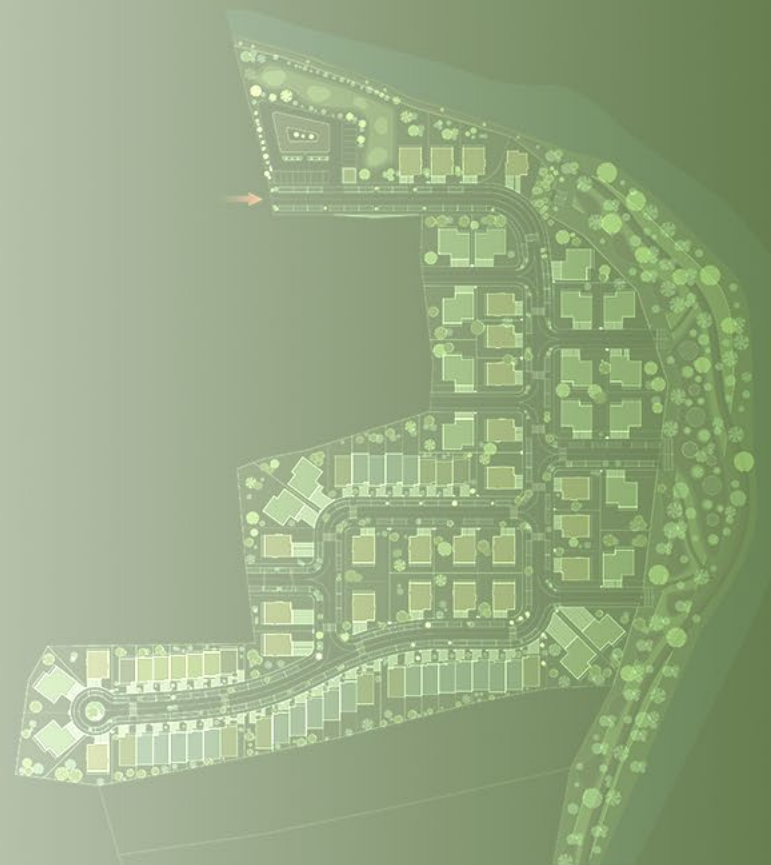




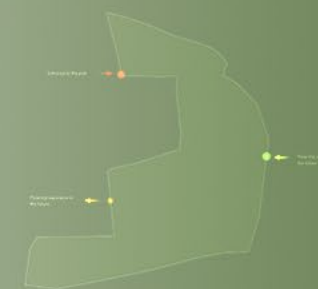
Primary streets



Secondary streets



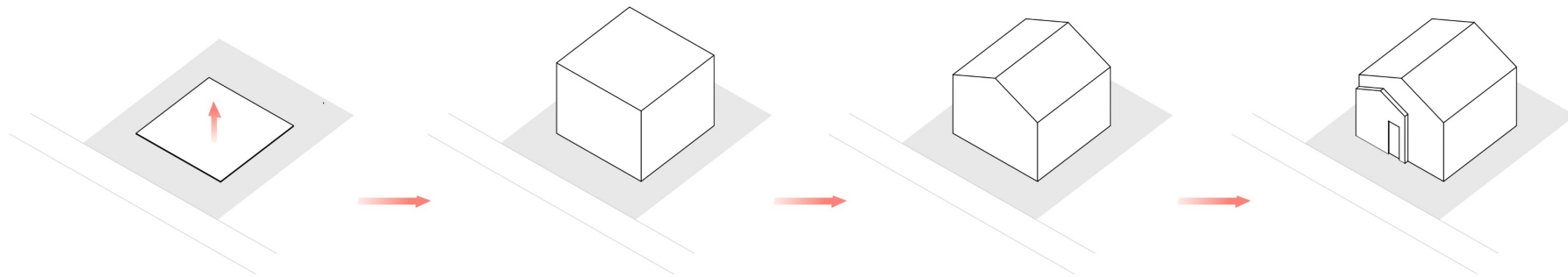
Location



Access to location



Street hierarchy

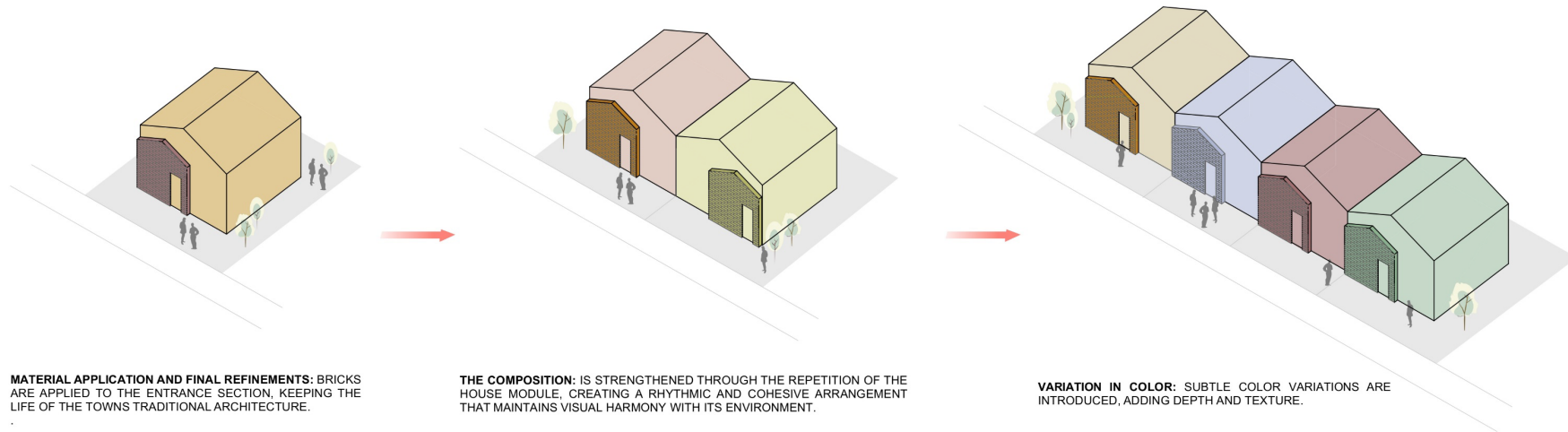


STARTING POINT: A SQUARE SHAPE IS USED AS THE BASE,

EXTRUSION: THE SQUARE IS EXTRUDED INTO A CUBE, CREATING A VOLUMETRIC FORM.

ROOF TRANSFORMATION: THE TRANSFORMATION FROM A SIMPLE CUBE TO A PITCHED ROOF CREATES A FAMILIAR HOUSE SHAPE THAT BLENDS SEAMLESSLY WITH THE SURROUNDING ARCHITECTURAL CONTEXT, MAINTAINING TRADITIONAL PROPORTIONS WHILE ALLOWING FOR SUBTLE MODERN ADAPTATIONS.

DEFINITION OF THE ENTRANCE: DOOR OPENING IS DEFINED, COMPLETING THE CONCEPTUAL MASSING.



MATERIAL APPLICATION AND FINAL REFINEMENTS: BRICKS ARE APPLIED TO THE ENTRANCE SECTION, KEEPING THE LIFE OF THE TOWNS TRADITIONAL ARCHITECTURE.

THE COMPOSITION: IS STRENGTHENED THROUGH THE REPETITION OF THE HOUSE MODULE, CREATING A RHYTHMIC AND COHESIVE ARRANGEMENT THAT MAINTAINS VISUAL HARMONY WITH ITS ENVIRONMENT.

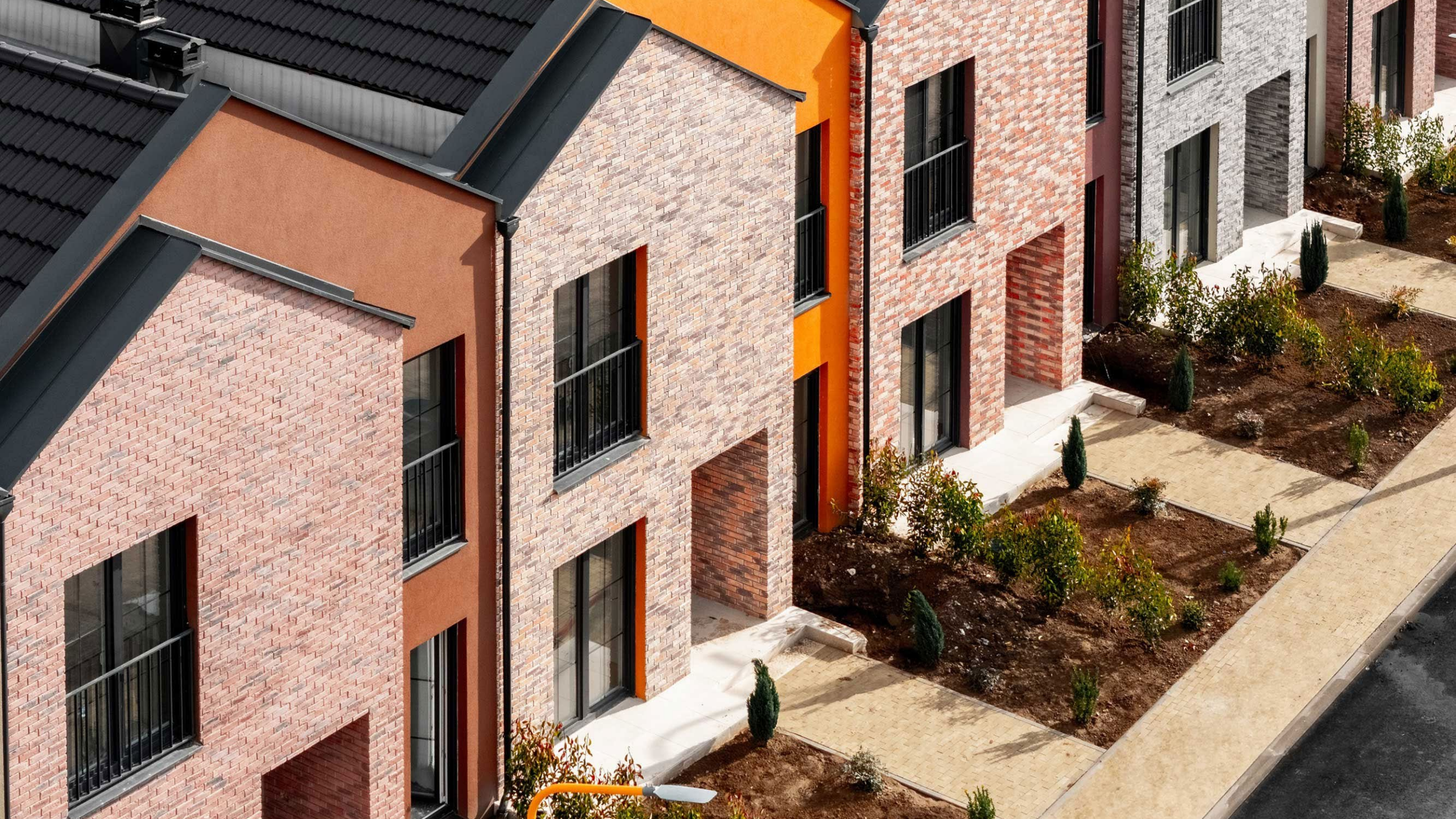
VARIATION IN COLOR: SUBTLE COLOR VARIATIONS ARE INTRODUCED, ADDING DEPTH AND TEXTURE.



The different bricks and colors of the facade work together to give a unique character, creating an atmosphere that attracts the attention of passers-by and residents. Each house is a reflection of architectural art, where every detail is thought to contribute to the overall harmony of the environment









“The faCade design is one of the defining features—an interplay of varying brick textures and earthy tones that gives each structure a distinct identity while contributing to a cohesive and visually engaging streetscape”

